

**PHILIPS**

HD7761



---

EN User manual

2

---

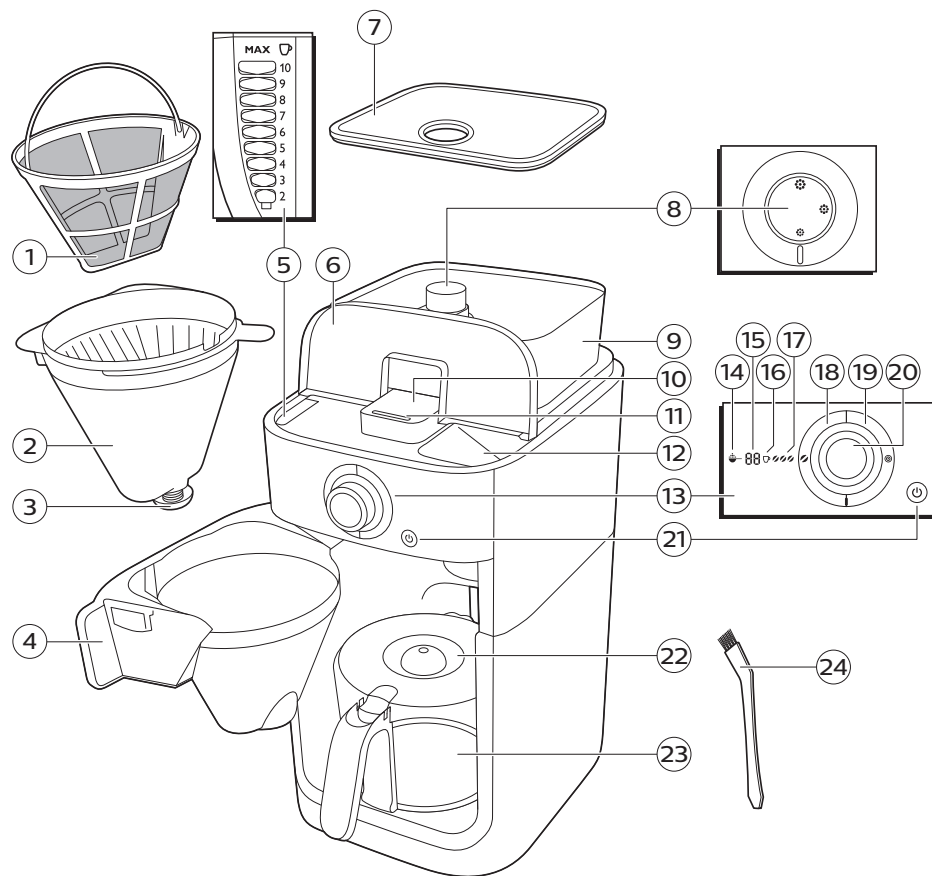
ZH-S 用户手册

13

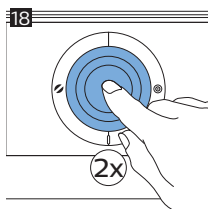
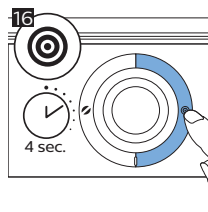
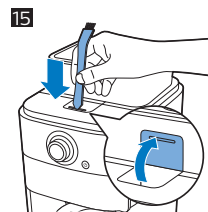
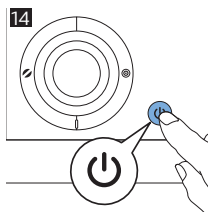
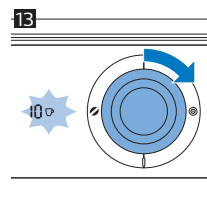
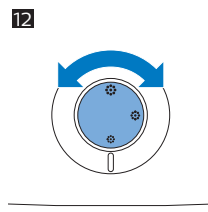
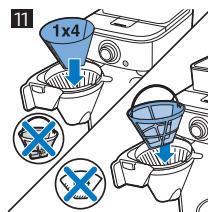
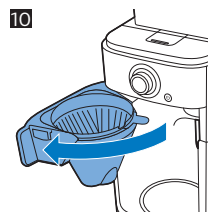
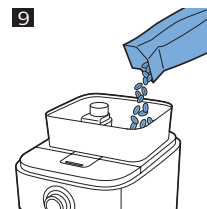
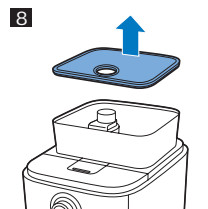
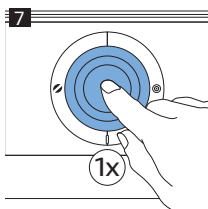
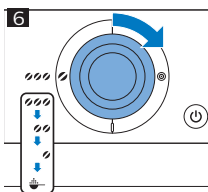
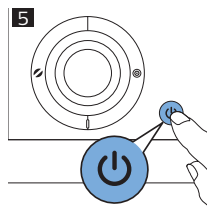
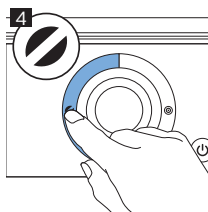
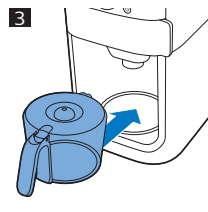
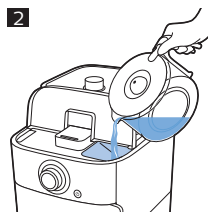
# Contents

<b>1. Introduction .....</b>	<b>5</b>
<b>2. General description (Fig. 1)..</b>	<b>5</b>
General description.....	5
<b>3. Important .....</b>	<b>5</b>
Danger.....	5
Warning .....	5
Caution.....	6
Electromagnetic fields (EMF).....	7
<b>4. Before first use .....</b>	<b>7</b>
Setting the automatic switch-off time	7
Flushing the appliance.....	7
<b>5. Using the appliance .....</b>	<b>8</b>
Filling the water reservoir.....	8
Using coffee beans .....	8
Using pre-ground coffee.....	9
Drip stop function .....	9
<b>6. Cleaning and maintenance .</b>	<b>9</b>
Cleaning after every use .....	9
Cleaning the grinder funnel .....	10
Descaling the coffeemaker .....	10
Warranty and support.....	11
Ordering accessories.....	11
Recycling.....	11
Troubleshooting .....	11

1



## 4 English



## 1. Introduction

Congratulations on your purchase and welcome to Philips! To fully benefit from the support that Philips offers, register your product at [www.philips.com/welcome](http://www.philips.com/welcome).

## 2. General description (Fig. 1)

### ■ General description

- 1 Permanent filter
- 2 Filter basket
- 3 Drip stop
- 4 Filter basket holder
- 5 Water level indicator
- 6 Water reservoir lid
- 7 Bean container lid
- 8 Coarseness knob
- 9 Coffee bean container
- 10 Grinder funnel lid
- 11 Lock of grinder funnel lid
- 12 Water filling hole
- 13 Display
- 14 Pre-ground coffee icon
- 15 Number of cups
- 16 Coffee cup icon
- 17 Strength select coffee bean icon
- 18 Strength select button
- 19 Grinder clean button
- 20 Control knob
- 21 On/off button
- 22 Glass jug lid
- 23 Glass jug
- 24 Bean chute cleaning brush

## 3. Important

### ■ Danger

- Never immerse the appliance in water or any other liquid, nor rinse it under the tap.

### ■ Warning

- Never pour water into the bean container, as this damages the coffeemaker.

## 6 English

- Check if the voltage indicated on the appliance corresponds to the local mains voltage before you connect the appliance.
- Do not use the appliance if the plug, the mains cord or the appliance itself is damaged.
- If the mains cord is damaged, you must have it replaced by Philips, a service center authorized by Philips or similarly qualified persons in order to avoid a hazard.
- Connect the appliance to an earthed wall socket.
- This appliance can be used by children aged from 8 years and above and by persons with reduced physical, sensory or mental capabilities or lack of experience and knowledge if they have been given supervision or instruction concerning use of the appliance in a safe way and if they understand the hazards involved. Cleaning and user maintenance shall not be made by children unless they are older than 8 and supervised. Keep the appliance and its cord out of reach of children aged less than 8 years.
- Children shall not play with the appliance.
- Cleaning and user maintenance shall not be made by children without supervision.
- Only use this appliance for its intended purpose to avoid potential hazard or injury.
- Do not let the mains cord hang over the edge of the table or worktop on which the appliance stands.
- Do not touch the grinding burrs of the of the appliance, especially when the appliance is connected to a wall socket.
- Do not touch the hot surfaces of the appliance when it operates.
- Do not empty the water reservoir by tilting the appliance, as this can damage the appliance. To empty the appliance, follow the instructions for flushing the appliance (see 'Flushing the appliance').
- If a problem occurs that you cannot solve by means of this user manual, contact the Consumer Care Center in your country. If the problem cannot be solved, take the appliance to a service center authorized by Philips for examination or repair. Do not attempt to repair the appliance yourself, otherwise your warranty becomes invalid.

### ■ Caution

- Do not place the appliance on a hot surface and prevent the mains cord from coming into contact with hot surfaces.
- Do not place the appliance in a cabinet when in use.
- Unplug the appliance if problems occur during grinding or brewing and before you clean it.
- Keep the plug and the wall socket dry.
- Do not lift and move the appliance while it is operating.
- The jug is hot during and after brewing. Always hold the jug by its handle.
- Never use the jug in a microwave oven.

- Wait until the appliance has cooled down before you store it. The hotplate and the coffee jug may be hot.
- After you have unpacked the appliance, make sure it is complete and undamaged. If in doubt, do not use the appliance but contact the Consumer Care Center in your country.
- This machine is intended for normal household use only. It is not intended for use in environments such as staff kitchens of shops, offices, farms or other work environments.

## ■ Electromagnetic fields (EMF)

This appliance complies with the applicable standards and regulations regarding exposure to electromagnetic fields.

## 4. Before first use

### ■ Setting the automatic switch-off time

You can choose how long you want your coffee to stay hot after brewing by adjusting the time after which the appliance automatically switches off. The default automatic switch-off time is 30 minutes. The maximum automatic switch-off time is 120 minutes. To adjust the automatic switch-off time, follow the steps below.

- 1 Make sure that the appliance is switched off but the mains plug is in the wall socket.
- 2 Press the center of the control knob until the display starts flashing.
- 3 Turn the control knob to increase or decrease the time. 1 is 10 minutes, 2 is 20 minutes, 3 is 30 minutes and so on until 12 is 120 minutes.
- 4 Press the center of the control knob to confirm the automatic switch-off time.

Note: The appliance always saves the last setting.

### ■ Flushing the appliance

Always flush the coffeemaker once before first use by following the steps below.

**Warning: Never pour water into the bean container, as this damages the coffeemaker.**

- 1 Open the water reservoir lid. Fill the water reservoir with fresh cold water up to the 8-cup indication (Fig. 2).

**Caution: Do not put coffee beans or pre-ground coffee in the water reservoir.**

- 2 Close the water reservoir lid.
- 3 Put the glass jug in the appliance (Fig. 3).
- 4 Press the on/off button (Fig. 5). The display lights up and the appliance beeps.
- 5 Press the strength select button (Fig. 4).
- 6 Turn the control knob to choose the pre-ground coffee setting (Fig. 6). The pre-ground coffee icon starts flashing.
- 7 Press the center of the control knob twice to confirm (Fig. 18). The appliance starts the flushing process.
- 8 Let the appliance operate until the flushing process is finished. It is finished when the appliance stops beeping.

## 8 English

- 9 Empty the glass jug.
- 10 Press the on/off button to switch off the appliance.

## 5. Using the appliance

### ■ Filling the water reservoir

There are indications for 2 to 10 cups (275 ml to 1375 ml) on the water-level window. You can use these indications to determine how much water to put in the water reservoir. The reflection changes from light to dark for each cup of water added.

- 1 Open the water reservoir lid and fill the water reservoir with the required amount of cold water (Fig. 2).

Note: Do not fill the water reservoir beyond the 10-cup indication.

Note: Make sure that the amount of water you pour into the water reservoir is consistent with the number of cups you want to brew. The coffeemaker uses all the water in the water reservoir.

### ■ Using coffee beans

**Warning: Always keep the water reservoir lid closed when you fill the coffee bean container with coffee beans. Otherwise coffee beans can fall into the water reservoir and block up the water inlet.**

- 1 Open the coffee bean container lid (Fig. 8).
- 2 Fill the container with coffee beans. Make sure that there are enough coffee beans in the container for the amount of coffee you want to brew (Fig. 9).

Note: Always make sure that the bean container is at least half full.

**Warning: To prevent the grinder from jamming, do not use unroasted or caramelized beans. Use coffee beans instead of espresso beans, as espresso beans may damage the grinder.**

- 3 Open the filter basket holder (Fig. 10).
- 4 Place a paper filter (type 1x4 or no. 4) or the permanent filter in the filter basket (Fig. 11).
- 5 Close the filter basket holder.
- 6 Turn the coarseness knob to select the desired type of grind (from fine to coarse). There are nine grind settings (Fig. 12).

Tip: The coarseness knob allows you to choose between 9 different settings. The icons indicate 3 preselected optimal settings, but you can choose any setting in between. We advise you to experiment with the different grind settings to find out which setting you prefer.

- 7 Press the strength button (Fig. 4). The coffee bean icons start flashing.
- 8 Turn the control knob to select the desired coffee strength: 1 bean for mild coffee, 2 beans for medium-strong coffee or 3 beans for strong coffee.
- 9 Press the center of the control knob to confirm the strength (Fig. 7).
- 10 To select the number of cups, turn the control knob until the desired number of cups flashes on the display (Fig. 13).

Note: Please keep in mind that the coffeemaker uses all the water in the water reservoir. If you select a number of cups that is smaller than the amount of water, the coffee becomes weaker than you intended.



- 11 Press the center of the control knob to confirm the number of cups (Fig. 7).
- 12 Press the center of the control knob again. The appliance beeps and starts grinding the required amount of coffee beans. When the grinding process is finished, the appliance starts brewing coffee.
- 13 Wait until the coffeemaker has stopped beeping before you remove the jug.

Note: After brewing, coffee drips from the filter basket for several seconds.

- 14 The appliance keeps your coffee hot until it switches off automatically. If you do not need your coffee to be kept hot, press the on/off button to switch off the appliance.

## ■ Using pre-ground coffee

If you want to use pre-ground coffee instead of coffee beans, follow the steps below.

- 1 Open the water reservoir lid and fill the water reservoir with the required amount of cold water (Fig. 2).
- 2 Open the filter basket holder (Fig. 10).
- 3 Place a paper filter (type 1x4 or no. 4) or the permanent filter in the filter basket (Fig. 11).
- 4 Put pre-ground coffee in the paper filter or in the permanent filter.
- 5 Close the filter basket holder.
- 6 Put the glass jug in the appliance (Fig. 3).
- 7 Press the on/off button (Fig. 5). The display lights up.
- 8 Press the strength select button (Fig. 4).
- 9 Turn the control knob to choose the pre-ground coffee setting (Fig. 6). The pre-ground coffee icon lights up.
- 10 Press the center of the control knob to confirm (Fig. 7).
- 11 Then press the center of the control knob again to start the brewing process.
- 12 Wait until the coffeemaker has stopped beeping before you remove the glass jug.

Note: After brewing, coffee drips from the filter basket for several seconds.

- 13 The appliance keeps your coffee hot until it switches off automatically. If you do not need your coffee to be kept hot, press the on/off button to switch off the appliance.

## ■ Drip stop function

The drip stop function enables you to remove the jug from the coffeemaker before the brewing process is finished. When you remove the jug, the drip stop stops the flow of coffee into the jug.

Note: The brewing process does not stop when you remove the jug. If you do not put the jug back into the appliance within 20 seconds, the filter basket overflows.

# 6. Cleaning and maintenance

## ■ Cleaning after every use

Never immerse the appliance in water or any other liquid, nor rinse it under the tap.

- 1 Press the on/off button to switch off the appliance.
- 2 Remove the mains plug from the wall socket.
- 3 Wipe the outside of the coffeemaker with a damp cloth.
- 4 Clean the filter basket and the permanent filter with hot water and some washing-up liquid or clean them in the dishwasher.

## 10 English

### ■ Cleaning the grinder funnel

**Important:** Clean the grinder funnel every 1 to 2 weeks to prevent clogging with ground coffee. This is easily and quickly done by following the steps below.

Note: Make sure the coffee bean container is empty before you start the cleaning procedure.

- 1 Press the on/off button to switch off the appliance (Fig. 14).
- 2 Open the filter basket holder (Fig. 10).
- 3 Place a paper filter (type 1x4 or no. 4) or the permanent filter in the filter basket (Fig. 11).
- 4 Close the filter basket holder.
- 5 Use the end of the bean chute cleaning brush to open the grinder funnel lid (Fig. 15).
- 6 Press and hold the grinder clean button for 4 seconds (Fig. 16). The grinder starts cleaning itself.
- 7 When the grinder has stopped cleaning, use the bean chute cleaning brush to brush ground coffee residues into the lower part of the funnel (Fig. 17). The ground coffee residues fall into the filter basket.
- 8 Close the lid of the grinder funnel.
- 9 Remove the paper filter or permanent filter with the ground coffee residues.

### ■ Descaling the coffeemaker

Descale the coffeemaker when you notice excessive steaming or when the brewing time increases. It is advisable to descale the coffeemaker every two months. Only use white vinegar to descale, as other products may cause damage to the coffeemaker. For more information on descaling, see [www.philips.com/descale-coffeemaker](http://www.philips.com/descale-coffeemaker).

**Warning:** Never use vinegar with an acetic acid content of 8 % or more, natural vinegar, powder descalers or tablet descalers to descale the appliance, as this may cause damage.

- 1 Open the water reservoir lid.
- 2 Fill the water reservoir up to 10 cup indication with white vinegar (4 % acetic acid).
- 3 Place a paper filter (type 1x4 or no. 4) or the permanent filter in the filter basket and close the filter basket holder.
- 4 Put the empty jug in the appliance.
- 5 Put the mains plug in the wall socket.
- 6 Press the on/off button to switch on the appliance (Fig. 5). The display lights up.
- 7 Press the strength select button and turn the control knob to choose the pre-ground coffee setting (Fig. 6).
- 8 Press the center of the control knob twice to confirm and start the brewing process (Fig. 18).
- 9 Wait until half of the vinegar has flowed into the jug. Then press the on/off button to interrupt the brewing process. Let the vinegar act for at least 15 minutes.
- 10 Press the on/off button to switch the coffeemaker back on.
- 11 Press the center of the control knob twice to let the appliance complete the brewing process (Fig. 18).
- 12 Empty the jug and remove the paper filter or the permanent filter with the scale residues.
- 13 Fill the water reservoir with fresh cold water and press the center of the control knob twice to start another brewing process (Fig. 18). Let the coffeemaker complete the entire brewing process and empty the jug.

Note: If necessary repeat step 13 until the water that comes out of the appliance no longer tastes or smells of vinegar.

**14** Clean the filter basket and the jug with hot water and some washing-up liquid.

**15** Press the on/off button on the front of the appliance to switch off the appliance (Fig. 14).

## ■ Warranty and support

Versuni offers a two-year warranty after purchase on this product. This warranty is not valid if a defect is due to incorrect use or poor maintenance. Our warranty does not affect your rights under law as a consumer. For more information or for invoking the warranty, please visit our website

**[www.philips.com/support](http://www.philips.com/support)**.

## ■ Ordering accessories

To buy accessories or spare parts, visit **[www.philips.com/parts-and-accessories](http://www.philips.com/parts-and-accessories)** or go to your Philips dealer. You can also contact the Philips Consumer Care Center in your country (see the international warranty leaflet for contact details).

## ■ Recycling

- Do not throw away the product with the normal household waste at the end of its life, but hand it in at an official collection point for recycling. By doing this, you help to preserve the environment.
- Follow your country's rules for the separate collection of electrical and electronic products. Correct disposal helps prevent negative consequences for the environment and human health.

## ■ Troubleshooting

This chapter summarizes the most common problems you could encounter with the appliance. If you are unable to solve the problem with the information below, visit **[www.philips.com/support](http://www.philips.com/support)** for a list of frequently asked questions or contact the Consumer Care Center in your country.

Problem	Solution
The appliance does not work.	Put the mains plug in the wall socket and press the on/off button to switch on the appliance.
	Make sure that the voltage indicated on the appliance corresponds to the local mains voltage.
	Fill the water reservoir with water.
	Close the lid of the grinder funnel.
The grinder does not work or does not work properly	Make sure that you did not select pre-ground coffee. If the symbol for pre-ground coffee is visible on the display, you selected pre-ground coffee.
	Clean the grinder funnel by following the instructions (see 'Cleaning the grinder funnel').
When I use the grinder, the coffee is too weak.	Make sure that the number of cups you selected is consistent with the amount of water in the water reservoir. Please keep in mind that the coffeemaker uses up all the water in the water reservoir.
	Use the strength select button to set the coffee strength to 'strong'.
	Use coffee beans of a stronger blend or flavor.
When I use pre-ground coffee, the coffee is too weak.	Make sure that the amount of pre-ground coffee in the filter is consistent with the amount of water in the water reservoir. Please keep in mind that the appliance uses all the water in the water reservoir.
	Use ground coffee of a stronger blend or flavor.

## 12 English

---

	To increase the coffee strength, increase the amount of pre-ground coffee or decrease the amount of water.
The filter overflows when I remove the jug from the appliance while it is brewing coffee.	If you remove the jug for more than 20 seconds during the brewing process, the drip stop causes the filter basket to overflow. Also note that the coffee does not reach its full taste before the end of the brewing process. Therefore we advise you not to remove the jug and pour out the coffee before the end of the brewing process.
The appliance continues to drip long after the brewing process has ended.	The dripping is caused by condensation of steam. It is completely normal that the appliance drips for some time.
	If the dripping does not stop, the drip stop may be clogged. To clean the drip stop, open the filter basket holder and take out the filter basket. Rinse the filter basket and the drip stop under the tap.
The coffee is not hot enough.	The coffee in the jug cools down faster if you brew only a few cups. The coffee stays hot longer if you brew 10 cups, which is a full jug.
	Descal the appliance (see 'Descaling the coffeemaker').
The appliance does not start cleaning the grinder funnel.	Make sure that the appliance is plugged in.
	Open the lid of the grinder funnel before you press and hold the coffee strength button.
	Press and hold the coffee strength button for 4 seconds until the grinder starts cleaning itself.
The appliance works but makes a beeping sound.	Please check if the lid of the grinder funnel is closed properly.
The coffee beans seem to be used up quickly.	To brew a perfect cup of coffee, the appliance needs a certain amount of ground coffee. The amount of coffee beans the appliance uses to obtain the optimal amount of ground coffee per cup is normal.

---

# 目录

<b>1. 简介</b> .....	<b>14</b>	<b>6. 清洁和保养</b> .....	<b>19</b>
<b>2. 基本说明 (图 1)</b> .....	<b>14</b>	每次使用后进行清洁 .....	19
基本说明 .....	14	清洁研磨机漏斗 .....	19
<b>3. 注意事项</b> .....	<b>15</b>	为咖啡机除垢 .....	19
危险 .....	15	保修和支持 .....	20
警告 .....	15	订购配件 .....	20
注意 .....	15	回收 .....	20
电磁场 (EMF) .....	16	故障处理方法 .....	21
<b>4. 首次使用之前</b> .....	<b>16</b>		
设置自动关闭时间 .....	16		
冲洗产品 .....	16		
<b>5. 使用本产品</b> .....	<b>17</b>		
给水箱注水 .....	17		
使用咖啡豆 .....	17		
使用预研磨咖啡 .....	18		
防滴漏功能 .....	18		

## 1. 简介

感谢您的惠顾，很高兴您选择飞利浦！为了让您能充分享受飞利浦提供的支持，请在 [www.philips.com/welcome](http://www.philips.com/welcome) 上注册您的产品。

## 2. 基本说明（图 1）

### ■ 基本说明

---

- 1 永久性过滤网
- 2 滤框
- 3 防滴漏功能
- 4 滤框支架
- 5 水位计
- 6 水箱盖
- 7 咖啡豆容器盖
- 8 粗度旋钮
- 9 咖啡豆容器
- 10 研磨机漏斗盖
- 11 研磨机漏斗盖锁
- 12 注水孔
- 13 显示屏
- 14 预研磨咖啡图标
- 15 杯数
- 16 咖啡杯图标
- 17 咖啡豆浓度选择图标
- 18 浓度选择按钮
- 19 研磨机清洁按钮
- 20 控制钮
- 21 开/关按钮
- 22 玻璃壶盖
- 23 玻璃壶
- 24 咖啡豆斜槽清洁刷

### 3. 注意事项

#### ■ 危险

- 不要将本产品浸入水或其它液体中，也不要在水龙头下冲洗。

#### ■ 警告

- 切勿将水倒入咖啡豆容器中，因为这样会损坏咖啡机。
- 在将产品连接电源之前，请先检查产品所标电压与当地的供电电压是否相符。
- 如果插头、电源线或产品本身受损，请勿使用本产品。
- 如果电源线损坏，为了避免危险，必须由飞利浦、飞利浦特约维修中心或有同等维修资格的专业人员来进行更换。
- 产品使用带接地线的插座。
- 本产品可以由 8 岁及以上年龄的儿童以及肢体不健全、感官或精神上有障碍或缺乏相关经验和知识的人士使用，但前提是有人对他们使用本产品进行监督或指导，以确保他们安全使用，并且让他们明白相关的危害。除非年满 8 周岁并且有人监护，否则儿童不得进行清洗和维护工作。应将产品及其线缆置于 8 周岁以下儿童触及不到的地方。
- 切勿让儿童玩弄本产品。
- 不要让儿童在无人监督的情况下对本产品进行清洁和保养。
- 只能将本产品用于预期用途，以避免潜在的危险或伤害。
- 不要将电源线悬挂在放置产品的桌子或工作台的边缘上。
- 请勿触摸产品研磨刀片，尤其在产品连接电源插座时要特别注意。
- 请勿在本产品工作时触摸其高温表面。
- 倒空水箱时请勿倾斜产品，否则可能会对产品造成损坏。要倒空本产品，请按照说明冲洗产品 (请参见 '冲洗产品')。
- 如有参照此用户手册无法解决的问题，请联系您所在国家/地区的客户服务中心。如果问题仍未得到解决，请将产品交给飞利浦授权的服务中心进行检查或维修。请勿尝试自行维修产品，否则您的保修将失效。

#### ■ 注意

- 切勿将本产品放在高温表面上，并防止电源线与高温表面接触。
- 使用产品时，切勿将其置于柜中。

## 16 简体中文

- 如果在研磨或冲煮咖啡期间出现问题，以及在清洁之前，请拔下产品的电源插头。
- 保持电源插头和插座干燥。
- 产品工作期间，切勿提起及移动产品。
- 冲煮期间或冲煮完成后，咖啡壶很烫。使用时务必握持咖啡壶柄。
- 不要在微波炉内使用咖啡壶。
- 待产品完全冷却后再存放。加热盘和咖啡壶可能会很烫。
- 打开产品包装时，确认产品完整且没有损坏。如有任何疑问，请联系您所在国家/地区的客户服务中心，切勿使用本产品。
- 本咖啡机仅限于普通家用。不得用于商店、办公场所、农场或其他工作环境的员工食堂及类似环境。

### ■ 电磁场 (EMF)

本产品符合有关电磁场暴露的适用标准和法规。

## 4. 首次使用之前

### ■ 设置自动关闭时间

您可以通过调整产品自动关闭的时间，选择冲煮后咖啡持续保温的时间。默认自动关闭时间为 30 分钟。最长自动关闭时间为 120 分钟。若要调整自动关闭时间，请按照以下步骤操作。

- 1 确保产品已关闭，但电源插头仍插在电源插座上。
- 2 按住控制旋钮中心，直至显示屏开始闪烁。
- 3 转动控制旋钮以延长或缩短此时间。1 表示 10 分钟，2 表示 20 分钟，3 表示 30 分钟，以此类推，12 表示 120 分钟。
- 4 按控制旋钮中心确认自动关闭时间。

注意：本产品始终会保存上次设置。

### ■ 冲洗产品

首次使用之前，请务必按照以下步骤冲洗咖啡机。

**警告：**切勿将水倒入咖啡豆容器中，因为这样会损坏咖啡机。

- 1 打开水箱盖。向水箱中注入干净的冷水，直至水位达到 8 杯水量标示 (图 2)。

**警告：**切勿将咖啡豆或预研磨咖啡放入水箱中。

- 2 关闭水箱盖。
- 3 将玻璃壶放到产品中 (图 3)。



- 4 按开/关按钮 (图 5)。显示屏亮起，产品会发出哔声。
- 5 按浓度选择按钮 (图 4)。
- 6 转动控制旋钮以选择预研磨咖啡设置 (图 6)。预研磨咖啡图标开始闪烁。
- 7 按控制旋钮中心两次以确认 (图 18)。此时产品将开始冲洗过程。
- 8 保持产品运转直至冲洗过程完成。产品停止发出蜂鸣声即表示冲洗完成。
- 9 倒空玻璃壶。
- 10 按开/关按钮关闭产品。

## 5. 使用本产品

### ■ 给水箱注水

水位窗上有 2 杯到 10 杯（275 毫升到 1375 毫升）的水量标示。您可以利用这些标示来确定向水箱内加入的水量。每添加一杯水，对应标记就会由浅变深。

- 1 打开水箱盖，在水箱中注入适量冷水 (图 2)。

注意：请勿向水箱中注入超过 10 杯量指示的水。

注意：请确保倒入水箱的水量与您想要冲煮的杯数一致。本咖啡机会用完水箱中所有的水。

### ■ 使用咖啡豆

**警告：向咖啡豆容器内装填咖啡豆时，请始终保持水箱盖关闭。否则，咖啡豆可能会掉落入水箱中，并造成入水口堵塞。**

- 1 打开咖啡豆容器盖 (图 8)。
- 2 往容器中添加咖啡豆。请确保容器中所加入的咖啡豆足以冲煮您想要的咖啡量 (图 9)。

注意：务必确保咖啡豆容器至少半满。

**警告：为防止研磨机堵塞，请不要使用未烘焙或焦糖咖啡豆。请使用咖啡豆，不要使用浓缩咖啡豆，因为浓缩咖啡豆可能会损坏研磨机。**

- 3 打开滤框支架 (图 10)。
- 4 将滤纸（1x4 型或 4 号）或永久性滤网放入滤框中 (图 11)。
- 5 关闭滤框支架。
- 6 旋转粗度旋钮以选择所需的研磨类型（从细到粗）。共有 9 种研磨设置 (图 12)。

提示：您可以使用粗度旋钮在 9 种不同设置之间进行选择。图标显示 3 种预先选择的最佳设置，但您可以在所有设置之间进行选择。建议您试验不同的研磨设置，找出您喜欢的设置。

- 7 按浓度按钮 (图 4)。咖啡豆图标开始闪烁。

## 18 简体中文

- 8 转动控制旋钮以选择所需的咖啡浓度：1 颗咖啡豆表示口感清淡的咖啡，2 颗咖啡豆表示口感适中的咖啡，3 颗咖啡豆表示口感浓郁的咖啡。
- 9 按控制旋钮中心以确认浓度 (图 7)。
- 10 若要选择杯数，请转动控制旋钮，所需的杯数会在显示屏上闪烁 (图 13)。

注意：请注意，咖啡机将用完水箱中所有的水。如果您选择的杯数小于水量，则咖啡味道会比预想的要淡。

- 11 按控制旋钮中心以确认杯数 (图 7)。
- 12 再按一次控制旋钮中心。此时产品会发出蜂鸣声，并按所需数量开始研磨咖啡豆。研磨过程结束后，此产品会开始冲煮咖啡。
- 13 等到咖啡机停止发出蜂鸣声后再取出玻璃壶。

注意：冲煮完成后，咖啡仍会从滤框中持续滴落数秒。

- 14 产品自动关闭之前会持续为咖啡保温。如果您不需要给咖啡保温，请按开/关按钮关闭此产品。

## ■ 使用预研磨咖啡

如果要使用预研磨咖啡而非咖啡豆冲煮咖啡，请按照以下步骤进行操作。

- 1 打开水箱盖，在水箱中注入适量冷水 (图 2)。
- 2 打开滤框支架 (图 10)。
- 3 将滤纸 (1x4 型或 4 号) 或永久性滤网放入滤框中 (图 11)。
- 4 将预研磨咖啡放入滤纸或永久性过滤网中。
- 5 关闭滤框支架。
- 6 将玻璃壶放到产品中 (图 3)。
- 7 按开/关按钮 (图 5)。显示屏将亮起。
- 8 按浓度选择按钮 (图 4)。
- 9 转动控制旋钮以选择预研磨咖啡设置 (图 6)。预研磨咖啡图标亮起。
- 10 按控制旋钮中心进行确认 (图 7)。
- 11 然后再按一次控制旋钮中心开始冲煮过程。
- 12 等到咖啡机停止发出蜂鸣声后再取出玻璃壶。

注意：冲煮完成后，咖啡仍会从滤框中持续滴落数秒。

- 13 产品自动关闭之前会持续为咖啡保温。如果您不需要给咖啡保温，请按开/关按钮关闭此产品。

## ■ 防滴漏功能

防滴漏功能可让您在冲煮过程完成前从咖啡机中取出玻璃壶。当您取出玻璃壶时，防滴漏功能可停止将咖啡注入玻璃壶。

注意：取出玻璃壶后，冲煮过程不会停止。如果您未在 20 秒内将玻璃壶放回产品中，滤框将会溢水。

## 6. 清洁和保养

### ■ 每次使用后进行清洁

不要将本产品浸入水或其它液体中，也不要在水龙头下冲洗。

- 1 按开/关按钮关闭产品。
- 2 将插头从电源插座中拔下。
- 3 用湿布擦拭咖啡机的外侧。
- 4 用热水和少许清洁液清洗滤框和永久性过滤网，或将其放在洗碗机中清洗。

### ■ 清洁研磨机漏斗

**重要说明：**每 1 至 2 周清洁一次研磨机漏斗，以免被咖啡粉堵塞。遵循以下步骤，轻松快速地进行清洁。

**注意：**开始清洁步骤前，请确保咖啡豆容器已空。

- 1 按开/关按钮关闭产品 (图 14)。
- 2 打开滤框支架 (图 10)。
- 3 将滤纸 (1x4 型或 4 号) 或永久性滤网放入滤框 (图 11)中。
- 4 关闭滤框支架。
- 5 使用咖啡豆斜槽清洁刷末端打开研磨机漏斗盖 (图 15)。
- 6 按住研磨机清洁按钮 4 秒钟 (图 16)。研磨机将自动开始清洁。
- 7 当研磨机停止清洁时，请使用咖啡豆斜槽清洁刷将研磨咖啡残渣扫到漏斗 (图 17)的下半部分。研磨咖啡残渣会落入滤框。
- 8 关闭研磨机漏斗盖。
- 9 取下带有研磨咖啡残渣的滤纸或永久性过滤网。

### ■ 为咖啡机除垢

如果发现蒸汽过多或冲煮时间增加，请为咖啡机除垢。建议每两个月进行一次咖啡机除垢。仅使用白醋除垢，因为其他产品可能会对咖啡机造成损坏。有关除垢的详细信息，请参阅 [www.philips.com/descalecoffeemaker](http://www.philips.com/descalecoffeemaker)。

**警告：**不要使用醋酸度为 8 % 或以上的白醋、天然醋、粉状除垢剂或片状除垢剂给本产品除垢，否则可能会造成损坏。

- 1 打开水箱盖。
- 2 在水箱中注入白醋 (醋酸度为 4%)，直至水位达到 10 杯标示处。
- 3 将过滤纸 (1x4 型或 4 号) 或永久性过滤网放入滤框并关闭滤框支架。
- 4 将空玻璃壶放入产品中。
- 5 将电源插头插入插座。
- 6 按开/关按钮启动产品 (图 5)。显示屏将亮起。

## 20 简体中文

- 按浓度选择按钮，然后转动控制旋钮以选择预研磨咖啡设置 (图 6)。
- 按控制旋钮中心两次以确认，然后开始冲煮过程 (图 18)。
- 耐心等待直至一半醋流入玻璃壶中。然后按开/关按钮暂停冲煮过程。让醋浸泡至少 15 分钟。
- 按开/关按钮开启咖啡机电源。
- 按两次控制旋钮中心，让产品完成冲煮过程 (图 18)。
- 倒空咖啡壶并取下带有水垢残留物的滤纸或永久性过滤网。
- 向水箱中注入干净的冷水，然后按两次控制旋钮中心再次开始冲煮过程 (图 18)。让咖啡机完成整个冲煮过程，然后清空咖啡壶。

注意：如有必要，请重复步骤 13，直至从产品中倒出的水尝起来或闻起来不再有醋的味道。

- 用热水和少许清洗液清洁滤框和保温壶。
- 按产品正面的开/关按钮关闭产品 (图 14)。

## ■ 保修和支持

购买本产品后，Versuni 提供两年保修服务。如果故障是由于使用不当或维护不当造成的，则不予保修。我们的保修服务不会影响您行使消费者合法权利。如想获取更多信息或申请保修，请访问我们的网站 [www.philips.com/support](http://www.philips.com/support)。

## ■ 订购配件

如需购买附件或备件，请访问 [www.philips.com/parts-and-accessories](http://www.philips.com/parts-and-accessories) 或联系您的飞利浦经销商。您还可以联系所在国家/地区的飞利浦客户服务中心（请参阅保修卡了解详细联系信息）。

## ■ 回收


- 弃置本产品时，请不要将其与一般生活垃圾放在一起，应将其交给政府指定的回收中心。这样做将有利于环保。
- 请遵守您所在国家/地区的电器和电子产品专门回收规定。正确处置废弃产品有助于避免对环境 and 人类健康造成不良后果。

产品中有害物质的名称及含量						
部件名称	有害物质					
	铅 (Pb)	汞 (Hg)	镉 (Cd)	六价铬 (Cr(VI))	多溴联苯 (PBB)	多溴二苯醚 (PBDE)
线路板	X	○	○	○	○	○
电源线和电缆	X	○	○	○	○	○
磨豆电机组件	X	○	○	○	○	○

本表格依据 SJ/T 11364 的规定编制。

○：表示该有害物质在该部件所有均质材料中的含量均在 GB/T 26572 规定的限量要求以下。

×：表示该有害物质至少在该部件的某一均质材料中的含量超出 GB/T 26572 规定的限量要求。



\* 该表格中所显示的“有害物质”在产品正常使用情况下不会对人身和环境产生任何伤害。  
 \* 该表格中所显示的“有害物质”及其存在的部件向消费者和回收处理从业者提供相关物质的存在信息，有助于产品废弃时的妥善处理。

## ■ 故障处理方法

本章归纳了使用本产品时最常见的一些问题。如果您无法根据以下信息解决问题，请访问 [www.philips.com/support](http://www.philips.com/support) 查阅常见问题列表，或联系您所在国家/地区的客户服务中心。

问题	解决方法
产品无法工作。	将电源插头插入电源插座，然后按开/关按钮打开此产品。 确保产品上标示的电压与当地的电源电压相符。
	将水注入水箱。 关闭研磨机漏斗盖。
研磨机无法运行或运行异常。	请确保您没有选择预研磨咖啡。如果显示屏显示预研磨咖啡的符号，则表示您选择了预研磨咖啡。 按照以下说明清洁研磨机漏斗（请参见“清洁研磨机漏斗”）。
使用研磨机时，咖啡太淡。	请确保所选择的杯数与水箱中的水量一致。请注意，咖啡机将用完水箱中所有的水。 使用浓度选择按钮将咖啡浓度设置为“浓郁”。 使用更浓混合比例或口味的咖啡豆。
使用预研磨咖啡时，咖啡太淡。	请确保过滤网中的预研磨咖啡量与水箱中的水量一致。请注意，本产品将用完水箱中所有的水。

## 22 简体中文

	使用更浓混合比例或口味的研磨咖啡。
	如需增加咖啡浓度，请增加预研磨咖啡的量或减少水量。
冲煮咖啡的过程中取出玻璃壶时过滤网溢水。	如果您在冲煮过程中将玻璃壶移开 20 秒以上，防滴漏功能会导致滤框溢水。还需注意，冲煮过程完成后咖啡才能达到期待口味。因此我们不建议您在冲煮过程结束之前取出玻璃壶来倒咖啡。
冲煮过程结束后很长时间，产品仍然滴漏。	滴漏是由蒸汽凝结造成的。产品滴漏稍许时间是完全正常的。
	如果滴漏一直没有停止，则防滴漏装置可能被堵塞。若要清洁防滴漏装置，请打开滤框支架并取出滤框。在水龙头下冲洗滤框和防滴漏装置。
咖啡不够热	如果冲煮的杯数较少，咖啡机会较快冷却。您冲煮 10 杯咖啡，即满壶咖啡，则保温时间将更长。
	为产品除垢 (请参见 '为咖啡机除垢')。
本产品没有开始清洁研磨机漏斗。	确保产品电源插头已插上。
	按住咖啡浓度按钮之前，请先打开研磨机漏斗盖。
	按住咖啡浓度按钮 4 秒钟，直到研磨机开始自动清洁。
产品运行，但发出哔声。	请检查研磨机漏斗盖是否已正常关闭。
咖啡豆似乎很快用完了。	若要冲煮香醇美味的咖啡，本产品需要使用一定数量的研磨咖啡。本产品只需正常数量的咖啡豆即可获得最佳数量的研磨咖啡。

## 飞利浦咖啡机 HD7761 食品接触材料信息

请根据说明书要求正常使用本产品。

本产品食品接触用材料及部件符合 GB4806.1-2016 和相应食品安全国家标准要求，具体信息如下：

材质		用途	执行标准	备注	
塑胶	PP	聚丙烯（丙烯均聚物）	上主体，L形管，顶盖，蒸汽通道，咖啡篮，咖啡篮架，玻璃杯盖，过滤网篮提手，水箱盖，冬菇头，阀体，阀珠，PP管，过滤网篮，玻璃杯手柄	GB4806.7-2023	使用温度不高于100℃
	POM	聚甲醛	挡板搁板，下密封圈支架，出粉挡板支架	GB4806.7-2023	使用温度不高于120℃
	PA	己二酸和己二胺的共聚物（聚酰胺66）	螺旋头，磨轮盖，磨轮盖内衬，清渣盘，减速壳帽，粉槽卡扣1，粉槽卡扣2，粉槽卡扣座，磨豆室	GB4806.7-2023	使用温度不高于100℃
	PPE	聚氧化（2,6-二甲基-1,4-亚苯基）树脂	花洒后盖	GB4806.7-2023	
	ABS	丙烯腈-丁二烯-苯乙烯	粉槽，齿轮固定板，豆口盖，豆箱，豆箱盖	GB4806.7-2023	使用温度不高于85℃
	AS	丙烯腈-苯乙烯共聚物	水尺	GB4806.7-2023	使用温度不高于85℃
	TPE	氢化苯乙烯/丁二烯共聚物	豆箱盖（包胶）	GB4806.7-2023	使用温度不高于66℃
	PA	间苯二甲酸与氮杂环十三烷-2-酮和3,3'-二甲基-4,4'-二氨基二环己基甲烷的聚合物	粉槽盖	GB4806.7-2023	使用温度不高于100℃
	PET	聚对苯二甲酸乙二醇酯	过滤网篮尼龙网	GB4806.7-2023	使用温度不高于100℃

## 24 简体中文

金属	9Cr18Mo	不锈钢	磨豆内轮, 磨豆外轮	GB4806.9-2023	
	铝合金3003	铝合金3003	发热管	GB4806.9-2023	不能直接接触强酸性食物
	铝合金43400	基材: 铝合金43400	出粉挡板	GB4806.9-2023	
	12Cr17Ni7	不锈钢301	咖啡止漏弹簧, 粉槽卡扣弹簧	GB4806.9-2023	
涂层涂料	4,4'-[5,5'-(1-甲基亚乙基)双(4,1-亚苯氧基)]双-1,3-异苯丙顺丁烯二酸酐与4'4-磺酰基及双苯胺的聚合物]4-甲基-1戊烯与乙烯的聚合物		出粉挡板	GB4806.10-2016	
硅橡胶	乙烯基封端的二甲基甲基乙烯基(硅氧烷与聚硅氧烷)		新出粉口密封圈, 弯管, 水箱进出水管, 出粉挡板密封圈, 硅胶圈, 出豆密封圈, 飞粉密封圈, 蒸汽通道密封圈2, 粉槽密封圈, 蒸汽通道密封圈1	GB4806.11-2016	产品不含有天然乳胶
玻璃	硅硼玻璃		玻璃杯	GB4806.5-2016	使用温度不高于150°C 玻璃杯不可微波炉使用
<p>备注:</p> <p>注1: 产品不宜作为容器长期存储食品。</p> <p>注2: 本系列产品包含以上食品接触材料, 部分机型可能不含个别材料, 以实际产品为准!</p>					







## **PHILIPS**

产 品：飞利浦咖啡机

型 号：HD7761

额定电压：220V~

额定频率：50Hz

额定输入功率：920W

生产日期：请见产品本体

产地：中国广东珠海

范颂尼（中国）投资有限公司  
上海市静安区灵石路 728 弄 20 号 201 室  
全国顾客服务热线：4008 203 160

本产品根据国标 GB4706.1-2005,  
GB4706.19-2008, GB4706.30-2008 制造

PHILIPS and the Philips Shield Emblem are registered trademarks of Koninklijke Philips N.V. and are used under license.

飞利浦及飞利浦盾牌标志是 Koninklijke Philips N.V. 的注册商标且经许可使用。

This product has been manufactured by and is sold under the responsibility of Versuni Holding B.V., and Versuni Holding B.V. is the warrantor in relation to this product.

本产品由 Versuni Holding B.V. 负责生产并销售，且 Versuni Holding B.V.是本产品的担保方。

2024 © Versuni Holding B.V.

3000.025.4863.6



[www.philips.com](http://www.philips.com)