

PHILIPS

7000 series





EN **User manual**

SC **用户手册**

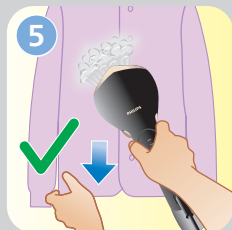
Please read this instructions carefully
before using the appliance.

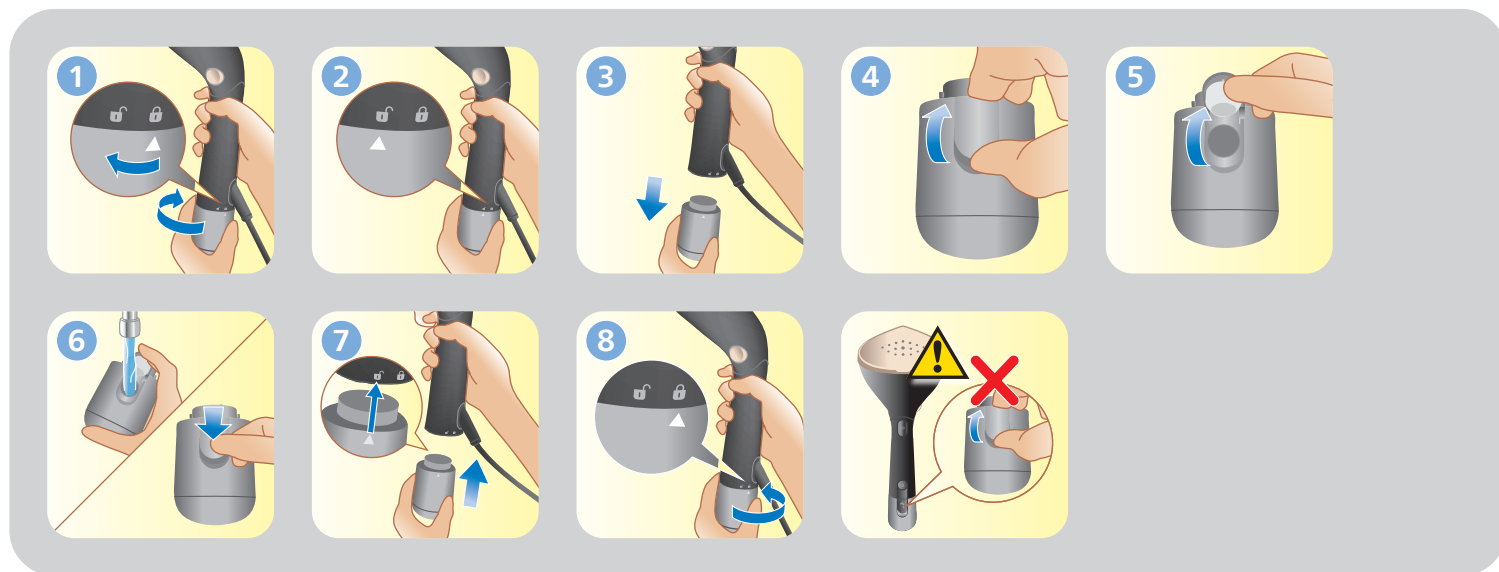
使用产品前请仔细阅读本使用说明书。

Please keep this instruction book for future reference.
保留备用。

	3		10
	4		11, 14
	5		12
	6		13
	7		14
	8		15







EN The appliance is suitable to be used with tap water. However, if you live in an area with hard water, we recommend that you mix an equal amount of tap water with distilled or demineralized water.

This will prevent fast scale build up and prolong the lifetime of the appliance.

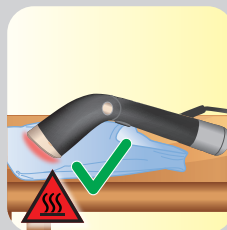
Warning: Do not use perfumed water, water from the tumble dryer, vinegar, starch, descaling agents, ironing aids, chemically descaled water or other chemicals, as they may cause water spitting, brown staining or damage to your appliance.

SC 本产品可使用自来水。但如果您居住的区域水质较硬，我们建议您将等量的自来水与蒸馏水或软化水混合使用。这样可以防止水垢快速积聚，从而延长产品的使用寿命。

警告：切勿使用香水、转筒式干燥机中的水、醋、淀粉、除垢剂、熨衣剂、化学除垢水或其他化学品，因为它们可能会导致喷水、留下褐色污垢或损坏产品。







EN Fig 2: Press the round button to adjust the angle of steamer head.

To protect your horizontal surface from direct contact of steam plate, do place the steamer head on top of heat-resistant layer (e.g. silicon mat) or lay it sideways on the surface.

SC 图二: 按下按钮，可调节熨烫头角度。

为防止烫坏物体表面，请将蒸汽喷头放在耐热层（例如硅垫）上，或者把它侧向放置。



Vertical steaming (竖烫)



EN For better dewrinkling result:

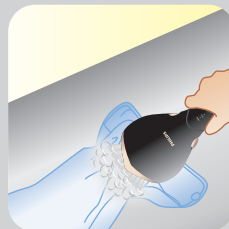
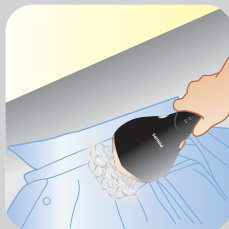
- Ensure steam plate is in full contact with garment.
- Hold and pull end of the garments to stretch it.

SC 为实现更好的除皱效果:

- 请确保蒸汽面板与衣物完全贴合。
- 按住并拉紧衣物边角部位以将其展开。

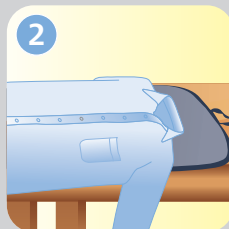
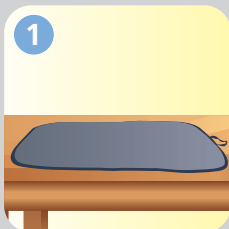


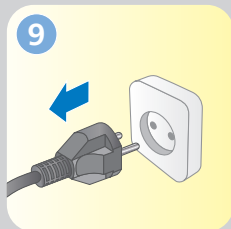
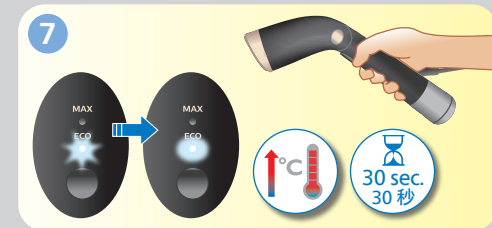
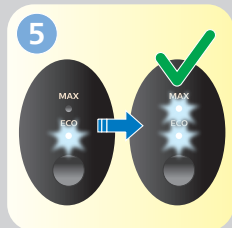
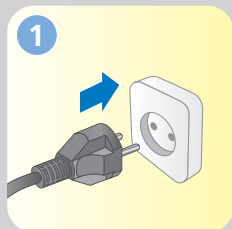
Horizontal steaming (平烫)





STH7050
STH7060





EN In order to ensure the best performance of the product and prolong its lifetime, it is best to perform rinsing (descale) once a month.

Fig 4: To activate rinsing mode for scale removal, hold and press steam setting button and steam trigger simultaneously until 2 LED lights blink.

Fig 6: Steam and hot water will start to be released for 1 min.

Fig 7: After 1 min, ECO mode light will blink to indicate product is back to heating up.

Fig 8: Press the power button to switch off the product once light has turned steady.

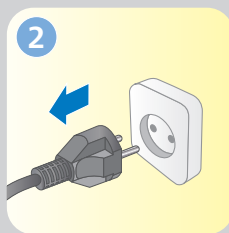
SC 为保障产品最佳性能，延长使用寿命，最好一个月除垢一次。

图 4: 要激活清洗模式进行除垢，同时按住并按下蒸汽设置按钮和蒸汽开关，直至 2 个 LED 灯闪烁。

图 6: 开始释放蒸汽和热水，时间持续 1 分钟。

图 7: 1 分钟后，ECO 模式灯将闪烁，表示产品恢复加热。

图 8: 按下开关，关闭清洗模式，将产品关机。

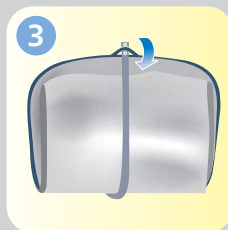




STH7020, STH7030
STH7040






STH7050
STH7060





EN If you have any problems, visit www.philips.com/support for a list of frequently asked questions or contact the Consumer Care Center in your country.

Problem	Possible cause	Solution
The appliance does not heat up.	The appliance is not plugged in properly or not switched on.	Check if the mains plug is inserted properly and its wall socket is working. Check if the appliance is switched on (power button is found at the lower handle).
The appliance does not produce any steam.	The appliance is not plugged in properly or not switched on.	Check if the mains plug is inserted properly and its wall socket is working. Check if the appliance is switched on (power button is found at the lower handle).
	The appliance has not heated up sufficiently.	Let the appliance heat up for 30 seconds (ECO light flashes). When the appliance is ready for use, the light turns steady.
	You have not pressed the steam trigger fully.	Press the steam trigger fully for a few seconds.
Water droplets drip from the appliance steamer head.	The water level in the water tank is too low or it has been fully used up.	Unplug the appliance and refill the water tank.
	The water tank is not in place.	Insert the water tank properly.
	Scales/calc are formed inside the appliance.	Perform rinsing function (refer to  section).

Problem	Possible cause	Solution
	The condensed water from previous session remains within the steam flow path.	Press and hold steam trigger for at least 3 seconds to release any water droplet residues at the beginning of steaming session before steaming directly on a garment.
The appliance produces a pumping sound/the handle vibrates.	Water is pumped to the steamer head to be converted into steam.	This is normal.
	The water level in the water tank is too low or it has been fully used up.	Unplug the appliance and refill the water tank.
Steam and water leak around steam trigger and/or handle area.	Water tank filling door is not closed properly.	Press down the filling door.
Steam gets weaker over time.	Scales/calc are formed inside the appliance.	Perform rinsing function (refer to  section).
Stems leave stains on the garment or impurities come out of the steamer head.	Scales/calc are formed inside the appliance.	Perform rinsing function (refer to  section).
	Apart from tap water, you have filled other liquids/additives or descaling agents into the water tank.	Appliance is designed to be used with tap water. In area with hard water, it is recommended to use distilled or demineralization water (50% demineralization/distilled water mixed with water could be used as well).
Noise is heard coming from steamer head along with trickle of steam when product is left aside or rested to cool down.	<p>The appliance has not been fully cooled down.</p> <p>Steam engine is still hot with residual water left in the steam path.</p>	Allow the appliance to fully cooled down (~60 minutes).



SC 如果您有任何问题，请访问 www.philips.com/support 查阅常见问题列表，或联系您所在国家/地区的客户服务中心。

问题	可能的原因	解决方法
产品无法加热。	产品未正确插入电源插头或未打开电源。	检查电源插头是否正确插入，以及墙壁插座是否正常工作。 检查产品是否已开机（电源按钮位于下握把处）。
手持式蒸汽熨烫刷不能产生蒸汽。	产品未正确插入电源插头或未打开电源。	检查电源插头是否正确插入，以及墙壁插座是否正常工作。 检查产品是否已开机（电源按钮位于下握把处）。
	产品未充分加热。	让产品加热 30 秒（节能模式灯闪烁）。当产品可供使用时，指示灯将持久亮起。
	您没有完全按下蒸汽开关。	完全按下蒸汽开关数秒钟。
	水箱中的水位太低或水已用完。	拔掉产品的电源插头，然后为水箱加水。
	水箱没有放好。	请正确插入水箱。
有水滴从产品的蒸汽喷头中滴出。	产品内部有水垢形成。	执行除垢功能（请参阅 🧼 部分）。
	前一阶段产生的凝结水仍然在蒸汽流道内。	在直接熨烫衣服之前，按住蒸汽开关至少 3 秒，以释放蒸汽开始阶段的任何水滴残留物。
产品会产生抽水声/手柄震动。	水被抽到蒸汽喷头以转化为蒸汽。	正常现象。
	水箱中的水位太低或水已用完。	拔掉产品的电源插头，然后为水箱加水。

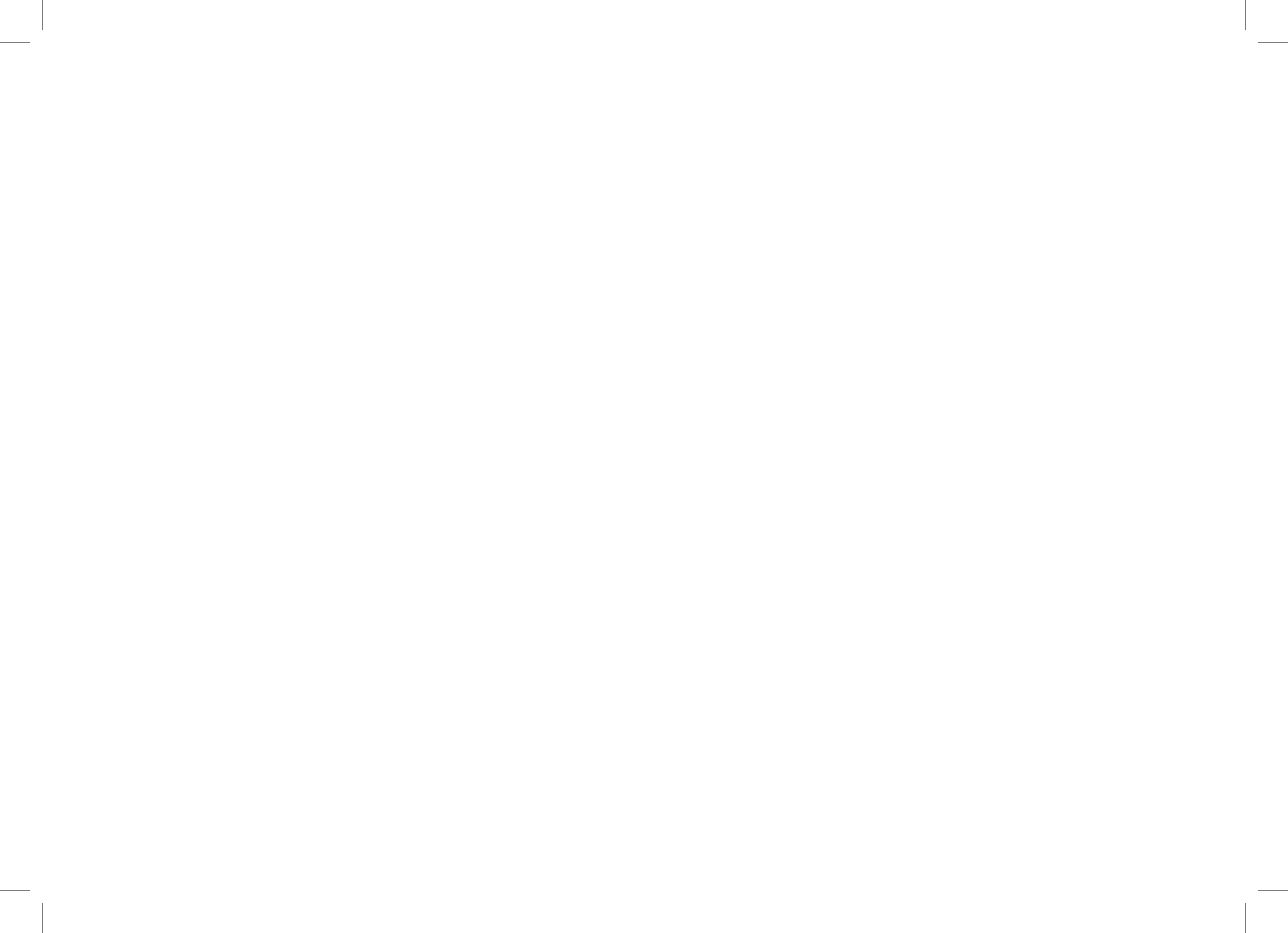
问题	可能的原因	解决方法
蒸汽开关和/或手柄周围有蒸汽和水泄漏。	水箱阀门未关好。	关闭水箱阀门。
随着时间的推移，蒸汽变弱。	产品内部有水垢形成。	执行除垢功能（请参阅  部分）。
蒸汽在衣物上留下污渍，或蒸汽喷头中掉出杂质。	产品内部有水垢形成。	执行除垢功能（请参阅  部分）。
	除了自来水外，您在水箱中注入了其它液体/添加剂或除垢剂。	根据设计，本产品适合使用自来水。在水质较硬的区域，建议使用蒸馏水或软化水（也可将 50% 的软化水/蒸馏水与自来水混合使用）。
当产品放在一边或等待冷却时，蒸汽喷头传来噪音且有蒸汽滴流。	<p>产品未完全冷却。</p> <p>蒸汽机仍然是热的，残留的水留在蒸汽流道内。</p>	让产品完全冷却（约 60 分钟）。

PHILIPS

产品： 飞利浦手持式蒸汽熨烫刷
 型号： STH7030
 额定电压： 220 V~
 额定频率： 50 Hz
 额定输入功率： 1500 W
 生产日期： 请见产品本体
 产地： 中国浙江慈溪

飞利浦家电（中国）投资有限公司
 上海市静安区灵石路728弄20号201室
 全国顾客服务热线：4008 800 008

本产品根据国标：GB4706.1-2005，
 GB4706.84-2007 制造





保留备用

发行日期: 2021-09-29

© 2021 Philips Domestic Appliances Holding B.V.
All rights reserved.

4239.001.2201.1

