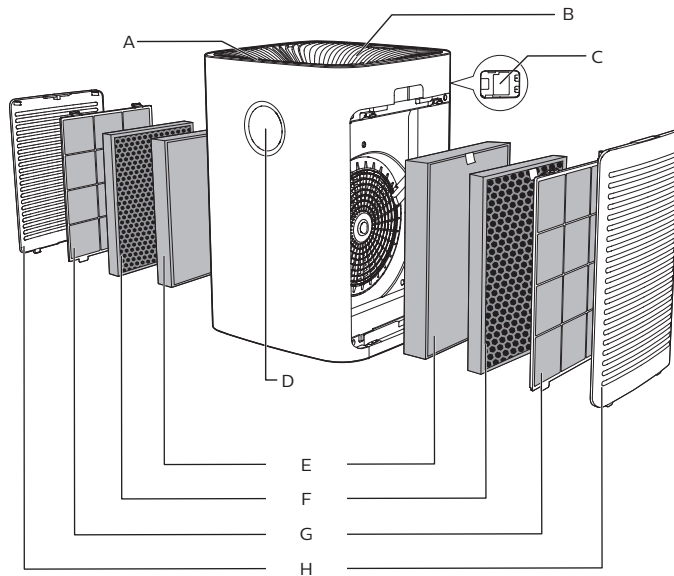




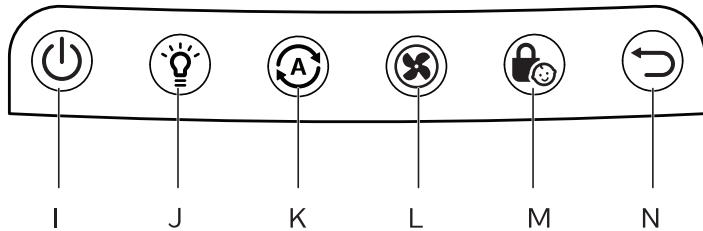
User Manual

1

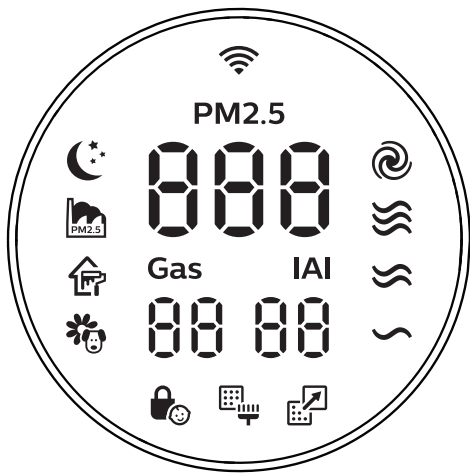


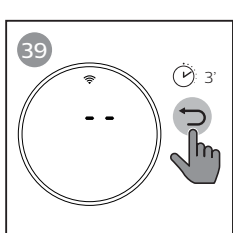
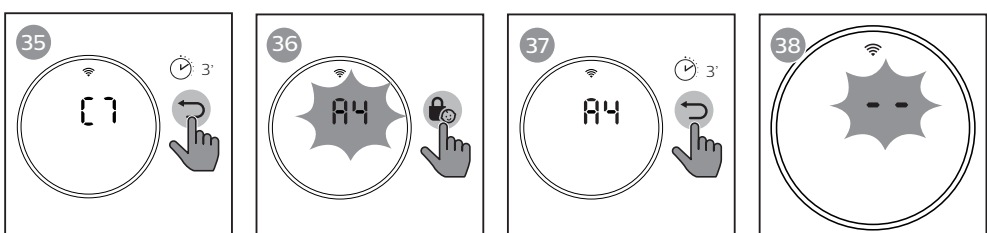
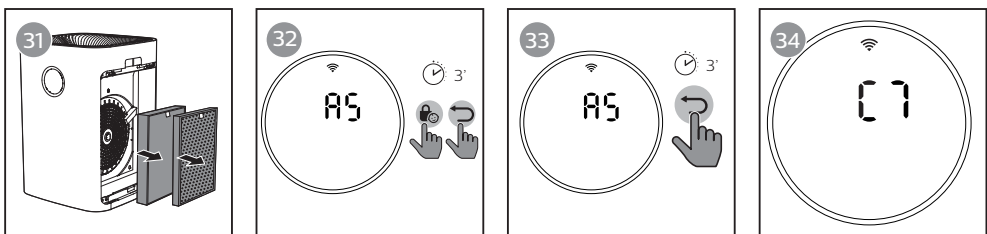
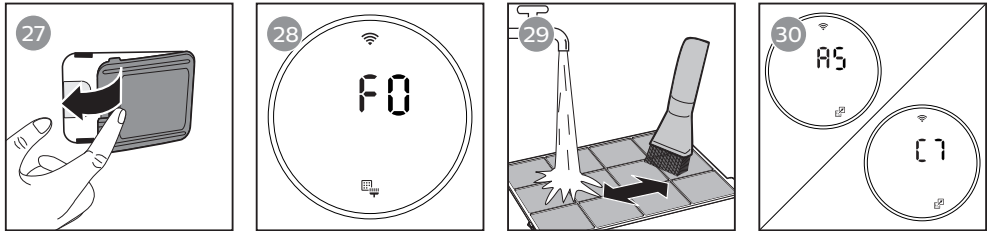
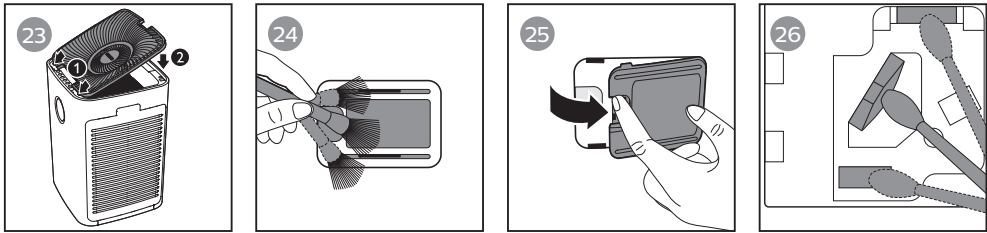
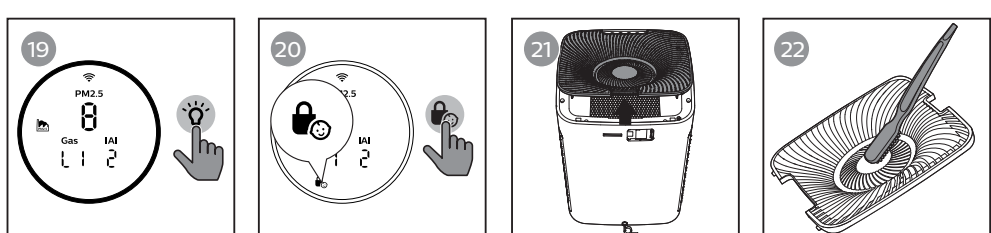
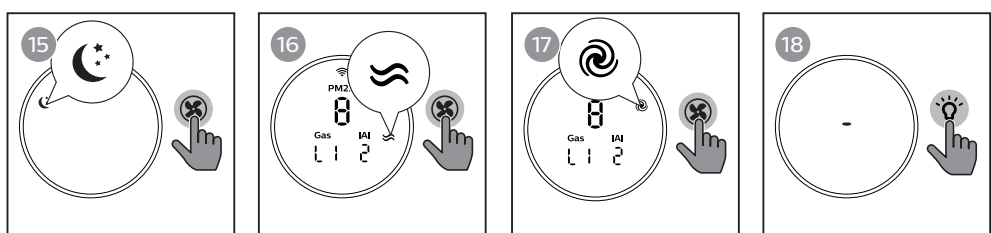
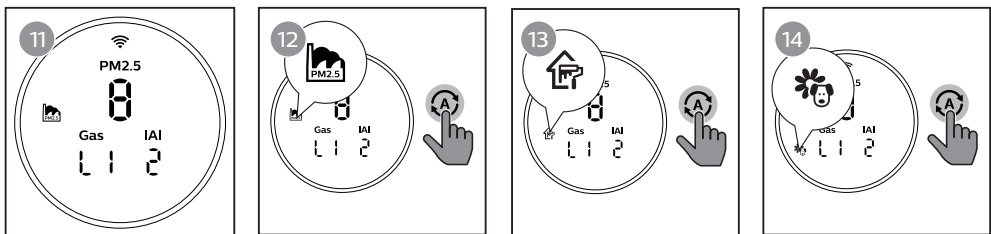
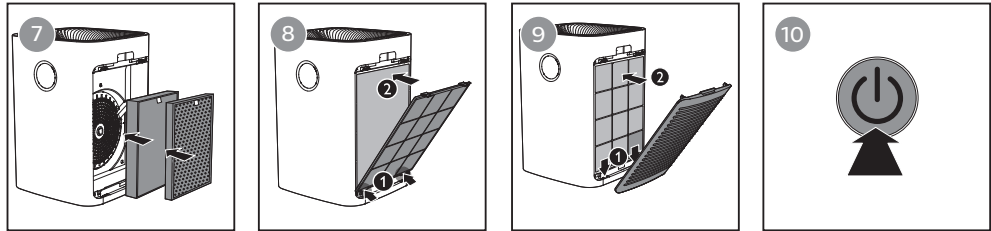
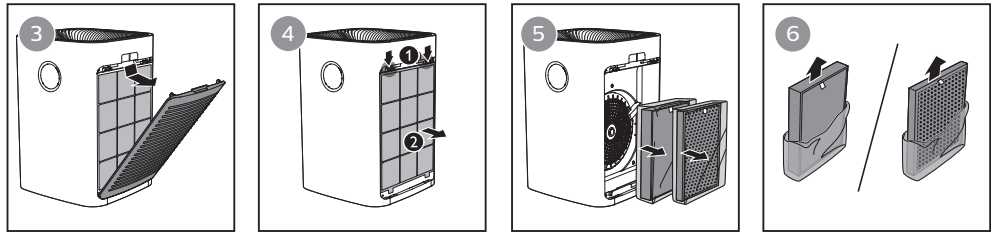
2

Control buttons



Display panel





Contents

1 Important	2	7 Storage	15
Safety	2		
2 Your air purifier	5	8 Troubleshooting	16
Product overview (fig.①)	5		
Controls overview (fig.②)	5	9 Guarantee and service	19
		Order parts or accessories	19
3 Getting started	6	10 Notices	19
Installing the filters	6	Electromagnetic fields (EMF)	19
Wi-Fi connection	6	Recycling	20
		Notice	20
4 Using the air purifier	8		
Understanding the air quality light	8		
Turning on and off	9		
Changing the Auto mode setting	9		
Changing the fan speed	10		
Using the light on/off function	10		
Setting the child lock	10		
5 Cleaning	11		
Cleaning schedule	11		
Cleaning the body of the air purifier	11		
Cleaning the air outlet cover	11		
Cleaning the air quality sensor	11		
Cleaning the pre-filter	12		
6 Replacing the filters	13		
Filter replacement indicator	13		
Replacing the filters	13		
Filter force reset	14		
Changing filter type	14		

Environmental friendly paper used. Thanks for your contribution to save trees.

1 Important

Safety

Read this user manual carefully before you use the appliance, and save it for future reference.

Danger

- Do not let water or any other liquid or flammable detergent enter the appliance to avoid electric shock and/or a fire hazard.
- Do not clean the appliance with water, any other liquid, or a (flammable) detergent to avoid electric shock and/or a fire hazard.
- Do not spray any flammable materials such as insecticides or fragrance around the appliance.

Warning

- Check if the voltage indicated on the appliance corresponds to the local power voltage before you connect the appliance.
- If the power cord is damaged, you must have

it replaced by Philips, a service center authorized by Philips, or similarly qualified persons in order to avoid a hazard.

- Do not use the appliance if the plug, the power cord, or the appliance itself is damaged.
- This appliance can be used by children aged from 8 years and above and persons with reduced physical, sensory or mental capabilities or lack of experience and knowledge if they have been given supervision or instruction concerning use of the appliance in a safe way and understand the hazards involved. Child shall not play with the appliance. Cleaning and maintenance shall not be made by children without supervision.
- Do not block the air inlet and outlet, e.g. by placing items on the air outlet or in front of the air inlet.
- Make sure that foreign objects do not fall into the appliance through the air outlet.

- Standard WiFi interface based on 802.11b/g/n at 2.4 GHz with a maximum output power of 31.62 mW EIRP.

Caution

- This appliance is not a substitute for proper ventilation, regular vacuum cleaning, or use of an extractor hood or fan while cooking.
- If the power socket used to power the appliance has poor connections, the plug of the appliance becomes hot. Make sure that you plug the appliance into a properly connected power socket.
- Always place and use the appliance on a dry, stable, level, and horizontal surface.
- Leave at least 20cm free space behind and on both sides of the appliance and leave at least 30cm free space above the appliance.
- Do not place anything on top of the appliance.
- Do not sit or stand on the appliance. Sitting or standing on the appliance may lead to potential injury.
- Do not place the appliance directly below an air conditioner to prevent condensation from dripping onto the appliance.
- Make sure all filters are properly installed before you switch on the appliance.
- Only use the original Philips filters specially intended for this appliance. Do not use any other filters.
- Combustion of the filter may cause irreversible human hazard and/or jeopardize other lives. Do not use the filter as fuel or for similar purpose.
- Avoid knocking against the appliance (the air inlet and outlet in particular) with hard objects.
- Always lift or move the appliance by the handle on back side of the appliance.

- Do not insert your fingers or objects into the air outlet or the air inlet to prevent physical injury or malfunctioning of the appliance.
- Do not use this appliance when you have used indoor smoke-type insect repellents or in places with oily residues, burning incense, or chemical fumes.
- Do not use the appliance near gas appliances, heating devices or fireplaces.
- Always unplug the appliance after use and before cleaning, or carrying out other maintenance or replacing the filters.
- Do not use the appliance in a room with major temperature changes, as this may cause condensation inside the appliance.
- To prevent interference, place the appliance at least 2 meters away from electrical appliances that use airborne radio waves such as TVs, radios, and radio-controlled clocks.
- The appliance is only intended for household use under normal operating conditions.
- Do not use the appliance in wet surroundings or in surroundings with high ambient temperatures, such as the bathroom, toilet, or kitchen.
- The appliance does not remove carbon monoxide (CO) or radon (Rn). It cannot be used as a safety device in case of accidents with combustion processes and hazardous chemicals.
- If you need to move the appliance, disconnect the appliance from the power supply first.
- Do not move the appliance by pulling its power cord.
- Always cleanse your hands after changing the filters.

2 Your air purifier

Congratulations on your purchase, and welcome to Philips!

To fully benefit from the support that Philips offers, register your product at www.philips.com/welcome.

Product overview (fig. ①)











- A Control buttons
- B Air outlet cover
- C Air quality sensor
- D Display panel
- E NanoProtect filter HEPA Series 3 (FY6172)
- F NanoProtect filter Active Carbon (FY6171)
- G Pre-filter
- H Side covers

Controls overview (fig. ②)

Control buttons

- I Power on/off button
- J Light on/off button
- K Auto mode button
- L Fan speed button
- M Child lock button
- N Reset button

Display panel:

- PM2.5** PM2.5 display
- Gas** Gas display
- IAI** IAI display
-  Sleep mode
-  Pollution mode
-  Gas mode
-  Allergen mode
-  Pre-filter cleaning alert
-  Filter replacement alert
-  Speed 1
-  Speed 2
-  Speed 3
-  Turbo speed

3 Getting started

Installing the filters

Remove all packaging of the filters before using the appliance.

Note

- Make sure the air purifier is unplugged from the electrical outlet before installing the filters.
- There is one set of filters on each side of the appliance. Each side is equipped with one pre-filter and one air purification filter.
- Make sure that you place the air purification filter in the appliance first and then the pre-filter.
- Make sure that the side with the tag is pointing towards you when installing filters.

- 1 Pull the top part of the side panel to remove it from the air purifier (fig. ③).
- 2 Press the two clips down (1) and pull the pre-filter towards you (2) (fig. ④).
- 3 Remove all filters (fig. ⑤).
- 4 Remove all packaging materials from the filters (fig. ⑥).
- 5 Place the thick filter (**FY6172**) into the air purifier and then the thin Active Carbon filter (**FY6171**). The model numbers are shown on each filter (fig. ⑦).
- 6 Attach the pre-filter back into the air purifier (fig. ⑧).

Note

- Make sure the side with the two clips is pointing towards you, and that all hooks of the pre-filter are properly attached to the purifier.

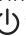

- 7 Reattach the front panel by pressing the top part of the panel onto the top of the air purifier (1). Then, gently push the panel against the body of the air purifier (2) (fig. ⑨).
- 8 Repeat the above steps and assemble the filter for the other side of the air purifier.
- 9 Wash your hands thoroughly after installing filters.


Wi-Fi connection

Setting up the Wi-Fi connection for the first time

- 1 Download and install the Philips "Clean Home+" app from the **App Store** or **Google Play**.



- 2 Put the plug of the air purifier in the power socket and touch  to turn on the air purifier.
↳ The Wi-Fi indicator  blinks orange for the first time.
- 3 Make sure that your smart device is successfully connected to your Wi-Fi network.

- 4 Launch the "**Clean Home+**" app and click on "**Connect a New Device**" or press the "+" button on the top of the screen. Follow the onscreen instructions to connect the air purifier to your network.
- 5 After the successful pairing and connection, the Wi-Fi indicator  will light up white. If pairing is not successful, consult the troubleshooting section, or the help section in the "**Clean Home+**" App for extensive and up-to-date troubleshooting tips.



Note





- This instruction is only valid when the air purifier is being set up for the first time. If the network has changed or the setup needs to be performed again, consult section "Reset the Wi-Fi connection" on page 7.
- If you want to connect more than one air purifier to your smartphone or tablet, you have to do this one by one. Complete the set up of one air purifier before you turn on the other air purifier.
- Make sure that the distance between your smartphone or tablet and the air purifier is less than 10 m without any obstructions.
- This App supports the latest versions of Android and iOS. Please check www.philips.com/cleanhome for the latest update of supported operating systems and devices.

Reset the Wi-Fi connection



Note

- This applies when the default network to which your purifier is connected has changed.
- Reset the Wi-Fi connection when your default network has changed.

- 1 Put the plug of the air purifier in the power socket and touch  to turn on the air purifier.
- 2 Touch  and  simultaneously for 3 seconds until you hear a beep.
 - ↳ The air purifier goes to pairing mode.
 - ↳ The Wi-Fi indicator  blinks orange.
- 3 Follow the steps 4-5 in "**Setting up the Wi-Fi connection for the first time**" section.

4 Using the air purifier

Understanding the air quality light

Air quality light color	Air quality level
Blue	Good
Blue-Purple	Fair
Purple-Red	Poor
Red	Very poor

The air quality light automatically goes on when the air purifier is switched on, and lights up all colors in sequence. After approximately 30 seconds, the air quality sensors select the color that corresponds to the surrounding air quality of airborne particles.

The color of the air quality light is determined by the highest level among PM2.5, IAI and Gas readings.

PM2.5

AeraSense sensing technology accurately detects and quickly responds to even the slightest particle change in the air. It provides you with reassurance with real-time PM2.5 feedback.

Most of the indoor air pollutants fall under PM2.5 – which refers to airborne particle pollutants smaller than 2.5 micrometers. Common indoor sources of fine particles are tobacco smoke, cooking, burning candles. Some airborne bacteria and the smallest mold spores, pet allergen and dust mite allergen particles also fall under PM2.5.

PM2.5 level	Air quality light color
≤35	Blue
36-75	Blue-purple
76-115	Purple-red
>115	Red

IAI

The professional-grade **AeraSense** sensor detects the level of indoor air allergen and with numerical feedback from 1 to 12 the potential risk level of indoor air allergens can be displayed. 1 indicates best air quality.

IAI level	Air quality light color
1-3	Blue
4-6	Blue-purple
7-9	Purple-red
10-12	Red

Gas




With an advanced gas sensor, a display ranging from L1 to L4 shows the level change of potential harmful gases (incl. VOC, odor, etc.) detected. L1 indicates best air quality.

Gas level	Air quality light color
L1	Blue
L2	Blue-purple
L3	Purple-red
L4	Red

Turning on and off

Note




- Always place the air purifier on a stable, horizontal, and level surface with the front of the unit facing away from walls or furniture.
- For optimum purification performance, close doors and windows.
- Keep curtains away from the air inlet or air outlet.

- 1 Put the plug of the air purifier in the power socket.
- 2 Touch  to switch on the air purifier (fig. 10).
 - ↳ The air purifier beeps.
 - ↳ The air purifier operates under the Pollution mode by default.
 - ↳ When the air purifier is warming up, "---" displays on the screen. After measuring the particulate matter only in the air, the air purifier shows the PM2.5/IAI/Gas level, the air quality sensor automatically selects the appropriate air quality light color.
 - ↳ The air purifier operates in the auto mode with  displayed on the screen (fig. 11).
- 3 Touch and hold  for 3 seconds to switch off the air purifier.

Note



- If the air purifier stays connected to the electrical outlet after turning OFF, the air purifier will operate under the previous settings when turned ON again.

Changing the Auto mode setting

You can choose the Pollution mode () , the Gas mode () , or the Allergen mode () .



Pollution mode

A smart auto-setting that automatically adjusts the air purifier's settings to the ideal level.

- Touch the Auto mode button  to select the Pollution mode (fig. 12).
 - ↳ The  icon displays on the screen.



Gas mode

The specially designed Gas mode is designed to quickly remove indoor harmful gases such as formaldehyde, toluene, and maintain it at safe level.

- Touch the Auto mode button  to select the Gas mode (fig. 13).
 - ↳ The  icon displays on the screen.

Allergen mode

The extra-sensitive allergen mode is designed to react to even a small change in allergen levels in the surrounding air.

- Touch the Auto mode button  to select the Allergen mode (fig. 14).
 - ↳ The  icon displays on the screen.

Changing the fan speed

In addition to the Auto modes, there are several fan speeds available.

When using the manual fan speed settings, the air purifier will still monitor the air quality, but it will not automatically adjust the fan speed if it detects changes in the air quality.

Sleep mode (☾)

In sleep mode, the air purifier operates quietly at a very low speed.

- Touch the fan speed button (⊗) to select the sleep mode (fig.15).
 - ↳ The sleep mode indicator ☾ displays on the screen.

Manual

- Touch the fan speed button (⊗) repeatedly to select the fan speed you need (fig.16):
 - ~ (Speed 1)
 - ≡ (Speed 2)
 - ≡≡ (Speed 3)



Tips

- If the air quality ring lights up blue, it indicates that the air quality is good, and you can select a lower fan speed. On the other hand, if the air quality ring lights up purple-red or red, it indicates that the air quality is unhealthy, and you can select a higher fan speed to purify the air more quickly.

Turbo

In turbo mode, the air purifier operates on the highest speed.

- Touch the fan speed button (⊗) to select the turbo mode (fig.17).
 - ↳ The turbo speed indicator ⚡ goes on.

Using the light on/off function

With the light on/off button, you can switch on or off the air quality light, the display screen and the function indicator if desired.

- 1 Touch the light on/off button (💡) once, the air quality light will be off, the display panel will be dimmed with - displayed (fig.18).
- 2 Touch the light on/off button (💡) again, all lights will be on (fig.19).

Setting the child lock

- 1 Touch and hold the child lock button (🔒) for 3 seconds to activate child lock (fig.20).
 - ↳ The child lock icon 🔒 displays on the screen.
 - ↳ When the child lock is on, all the other buttons are not responsive.
- 2 Touch and hold the child lock button (🔒) for 3 seconds again to deactivate child lock.
 - ↳ The child lock icon 🔒 disappears.



Note

- You can still control the appliance through the App even child lock is activated.


5 Cleaning



Note

- Always turn the air purifier off and unplug from the electrical outlet before cleaning.
- Never immerse the air purifier in water or any other liquid.
- Never use abrasive, aggressive, or flammable cleaning agents such as bleach or alcohol to clean any part of the air purifier.
- Only the pre-filter is washable. The air purification filters are not washable.
- Do not attempt to clean the filters or air quality sensor with a vacuum.

Cleaning schedule

Frequency	Cleaning method
When necessary	Wipe the surface of the appliance with a soft dry cloth
	Clean the air outlet cover
Every two months	Clean the air quality sensor with a dry cotton swab
When the pre-filter cleaning indicator  lights up and F0 displays on the screen	Clean the pre-filter

Cleaning the body of the air purifier

Regularly clean the inside and outside of the air purifier to prevent dust from collecting.

- 1 Use a soft, dry cloth to clean both the interior and exterior of the air purifier.
- 2 The air outlet can also be cleaned with a dry, soft cloth.

Cleaning the air outlet cover

- 1 To unlock the air outlet cover, grab the handle on the cover and pull the cover up (fig. [21](#)).
- 2 Clean the cover with a brush (fig. [22](#)).
- 3 Reattach the cover properly (fig. [23](#)).

Cleaning the air quality sensor

Clean the air quality sensor every 2 months for optimal functioning of the purifier.




Note

- If the air purifier is used in a dusty environment, it may need to be cleaned more often.
- If the humidity level in the room is very high, condensation may develop on the air quality sensor and the air quality light may indicate a poorer air quality even though the air quality is actually good. If this occurs, clean the air quality sensor or use the air purifier on a manual speed setting.

- 1 Switch off the air purifier and unplug from the power socket.
- 2 Clean the air quality sensor inlet and outlet with a soft brush (fig. 24).
- 3 Open the air quality sensor cover (fig. 25).
- 4 Clean the air quality sensor, the dust inlet and the dust outlet with a damp cotton swab (fig. 26).
- 5 Dry all parts thoroughly with a dry cotton swab.
- 6 Reattach the air quality sensor cover (fig. 27).

Cleaning the pre-filter

Clean the pre-filter when **F0** is displayed on the screen and the pre-filter cleaning alert  is on (fig. 28).



- 1 Switch off the air purifier and unplug from the power socket.
- 2 Pull the top part of the side panel to remove it from the air purifier (fig. 3).
- 3 Press the two clips down (1) and pull the pre-filter towards you (2) (fig. 4).
- 4 If the pre-filter is very dirty, use a soft brush to brush away the dust. Then wash the pre-filter under running tap water (fig. 29).
- 5 Allow the pre-filter to air dry thoroughly before placing back in the air purifier.

- 6 Put the pre-filter back into the air purifier (fig. 8).




Note

- To optimize the lifetime of the pre-filter, make sure it air dries completely after cleaning.
- Wash your hands after handling the filter.
- Make sure the side with the two clips is pointing towards you, and that all hooks of the pre-filter are properly attached to the air purifier.

- 7 To reattach the front panel, press the top part of the panel onto the top of the air purifier (1). Then, gently push the panel against the body of the air purifier (2) (fig. 9).
- 8 Put the plug of the air purifier in the power socket.
- 9 Touch the  button to switch on the appliance.
- 10 Touch and hold the reset button  for 3 seconds to reset the pre-filter cleaning time.
- 11 Wash your hands thoroughly after installing filters.

6 Replacing the filters

Filter replacement indicator

This air purifier is equipped with a filter replacement indicator to make sure that the air purification filter is in optimal condition when the air purifier is operating. When the filters need to be replaced, the filter code displays on the screen (see Filter alert chart) and the filter replacement alert () lights up.




If the filters are not replaced in time, the air purifier will stop operating and automatically lock to protect the air quality in the room. Replace the filters as soon as possible according to the filter code.

Replacing the filters

Note

- The air filters are not washable or reusable.
- Always turn off the air purifier and unplug from the electrical outlet before replacing the filters.
- Do not clean the filters with a vacuum.
- If the pre-filter is damaged, worn or broken, do not use. Visit www.philips.com/support or contact the Consumer Care Center in your country.


Filter alert chart (fig. 30)

Filter alert light status	Action
A5 displays on the screen and the filter replacement alert () goes on	Replace the NanoProtect filter HEPA Series 3 (FY6172)
C7 displays on the screen and the filter replacement alert () goes on	Replace the NanoProtect filter Active Carbon (FY6171)
A5 and C7 display on the screen alternately and the filter replacement alert () goes on	Replace both filters

- 1 Turn off the air purifier and unplug from the power socket.
- 2 Take out the used air filter according to the filter alert light status displayed on the screen. Discard used filters (fig. 31).

Note

- Do not touch the pleated filter surface, or smell the filters as they have collected pollutants from the air.





- 3 Remove all packaging material from the new filters (fig. 6).
- 4 Place the new filters into the air purifier (fig. 7).
- 5 Put the plug of the air purifier in the power socket.
- 6 Touch and hold the reset button  for 3 seconds to reset the filter lifetime counter.

Note





- Wash your hands after changing a filter.
- This air purifier has no other user-serviceable parts. For assistance, contact the Consumer Care Center in your country.

Filter force reset


You can replace filters even if there is no filter replacement code displayed on the screen. After replacing a filter, you need to reset the filter lifetime counter manually.


- 1 Touch  and  simultaneously for 3 seconds to enter the filter reset mode (fig. 32).
 - ↳ Code (A5) of the NanoProtect filter HEPA Series 3 displays on the screen.
- 2 Touch and hold  for 3 seconds to force reset the filter lifetime counter of the NanoProtect filter HEPA Series 3 (fig. 33).
- 3 Code (C7) of the NanoProtect filter Active Carbon displays on the screen after the lifetime counter of the NanoProtect filter HEPA Series 3 has been reset (fig. 34).
- 4 Touch and hold  for 3 seconds to force reset the filter lifetime counter of the NanoProtect filter Active Carbon and exit the filter reset mode (fig. 35).

Changing filter type

- 1 Touch  and  simultaneously for 3 seconds to enter the filter type change mode (fig. 32).
 - ↳ Code (A5) of the NanoProtect filter HEPA Series 3 displays on the screen.
- 2 Touch  to select filter code of the new filter you will use (fig. 36).
- 3 Touch and hold  for 3 seconds to confirm the filter code of the new filter (fig. 37).

Note

- After you have selected the filter code of the new filter using the  button, if you do not touch any other buttons in 10 seconds, the appliance will automatically confirm the filter code of the new filter.

- 4 After the new filter code is confirmed, -- displays on the screen (fig. 38).
- 5 Repeat the above steps to change the second filter type.
- 6 Tap and hold  for 3 seconds to confirm the filter code and exist the filter type change mode (fig. 39).

Note

- Refer to the separate leaflet that comes with the filter for more information on different filter combinations for your choice.



7 Storage

- 1 Turn off the air purifier and unplug from the power socket.
- 2 Clean the air purifier, air quality sensor and pre-filter (see chapter 'Cleaning').
- 3 Let all parts air dry thoroughly before storing.
- 4 Wrap the filters and pre-filters separately in air tight plastic bags.
- 5 Store the air purifier, filters and pre-filters in a cool, dry location.
- 6 Always thoroughly wash hands after handling filters.

8 Troubleshooting

This chapter summarizes the most common problems you could encounter with the appliance. If you are unable to solve the problem with the information below, contact the Consumer Care Center in your country.

Problem	Possible solution
The air purifier does not work even though it is switched on.	<ul style="list-style-type: none">• Check if the top cover is properly installed.• The filter replacement indicator has been on continuously but you have not replaced the corresponding filter, and the air purifier is now locked. In this case, replace the filter and reset the filter lifetime counter.
The airflow that comes out of the air outlet is significantly weaker than before.	<ul style="list-style-type: none">• The pre-filter is dirty. Clean the pre-filter (see chapter "Cleaning").
The air quality does not improve, even though the air purifier has been operating for a long time.	<ul style="list-style-type: none">• Check if the packing material is removed from the filters.• One of the filters has not been placed in the air purifier or a filter is not placed properly. Make sure that all filters are properly installed in the following order, starting with the innermost filter: 1) NanoProtect filter HEPA Series 3 (FY6172); 2) NanoProtect filter Active Carbon (FY6171); 3) pre-filter.• The air quality sensor is wet. Make sure that the air quality sensor is clean and dry (see chapter "Cleaning").
The color of the air quality light always stays the same.	<ul style="list-style-type: none">• The air quality sensor is dirty. Clean the air quality sensor (see chapter "Cleaning").
The air purifier produces a unpleasant smell.	<ul style="list-style-type: none">• The first few times you use the appliance, it may produce a plastic smell. This is normal. However, if the appliance produces a burnt smell even if removing filters, contact your Philips dealer or an authorized Philips service center. The filter may produce smell after being used for a while because of the absorption of indoor gases. It's recommended that you reactivate the filter by putting it in direct sunlight for repeated use. If odor still exists, replace the filter.

Problem	Possible solution
The air purifier is loud.	<ul style="list-style-type: none"> If the air purifier is too loud, change the fan speed to a lower fan speed level. When using the air purifier in a bedroom at night, choose the sleep mode.
The air purifier still indicates that I need to replace a filter, but I already did.	<ul style="list-style-type: none"> Perhaps you did not reset the filter lifetime counter. Plug in the air purifier, touch  to switch on the air purifier, and touch and hold the reset button  for 3 seconds (see Filter reset section).
Error code "E1" displays on the screen.	<ul style="list-style-type: none"> The motor has malfunctions. Contact the Consumer Care Center in your country.
Error codes "E2", "E3", "E4" or "E5" displays on the screen.	<ul style="list-style-type: none"> The sensor has malfunctions. Contact the Consumer Care Center in your country.
Which App I should download?	<ul style="list-style-type: none"> Download and install the Philips "Clean Home+" app from the App Store or Google Play.
The Wi-Fi setup is not successful.	<ul style="list-style-type: none"> If the router your purifier is connected to is dual-band and currently it is not connecting to a 2.4GHz network, please switch to another band of the same router (2.4GHz) and try to pair your purifier again. 5GHz networks are not supported. Web authentication networks are not supported. Check if the purifier is within range of the Wi-Fi router. You can try to locate the air purifier closer to the Wi-Fi router. Check if the network name is correct. The network name is case-sensitive. Check if the Wi-Fi password is correct. The password is case-sensitive. Retry the setup with the instructions in section 'Set up the Wi-Fi connection when the network has changed'. The Wi-Fi connectivity can be interrupted by electromagnetic or other interferences. Keep the appliance away from other electronic devices that may cause interferences. Check if the mobile device is in airplane mode. Make sure to have the airplane mode deactivated when connecting to the Wi-Fi network. Consult the help section in the App for extensive and up-to-date troubleshooting tips.

9 Guarantee and service

If you need information or if you have a problem, please visit the Philips website at www.philips.com or contact the Philips Consumer Care Center in your country (you find its phone number in the worldwide guarantee leaflet). If there is no Consumer Care Centre in your country, go to your local Philips dealer.

Order parts or accessories

If you have to replace a part or want to purchase an additional part, go to your Philips dealer or visit www.philips.com/support.

If you have problems obtaining the parts, please contact the Philips Consumer Care Center in your country (you can find its phone number in the worldwide guarantee leaflet).

10 Notices

Electromagnetic fields (EMF)

This Philips appliance complies with all applicable standards and regulations regarding exposure to electromagnetic fields.

Compliance with EMF

Koninklijke Philips N.V. manufactures and sells many products targeted at consumers, which, like any electronic apparatus, in general have the ability to emit and receive electromagnetic signals.

One of Philips' leading Business Principles is to take all necessary health and safety measures for our products, to comply with all applicable legal requirements and to stay well within the EMF standards applicable at the time of producing the products.

Philips is committed to develop, produce and market products that cause no adverse health effects. Philips confirms that if its products are handled properly for their intended use, they are safe to use according to scientific evidence available today.

Philips plays an active role in the development of international EMF and safety standards, enabling Philips to anticipate further developments in standardization for early integration in its products.

Recycling

Do not throw away the product with the normal household waste at the end of its life, but hand it in at an official collection point for recycling. By doing this, you help to preserve the environment.

Follow your country's rules for the separate collection of electrical and electronic products. Correct disposal helps prevent negative consequences for the environment and human health.

Notice

App Store is a service mark of Apple Inc.

Google Play is a trademark of Google Inc.

This Philips appliance and Clean Home+ app applied multiple open source softwares. Copies of open source software license text used in this product can be derived from website- www.philips.com/cleanhome.

