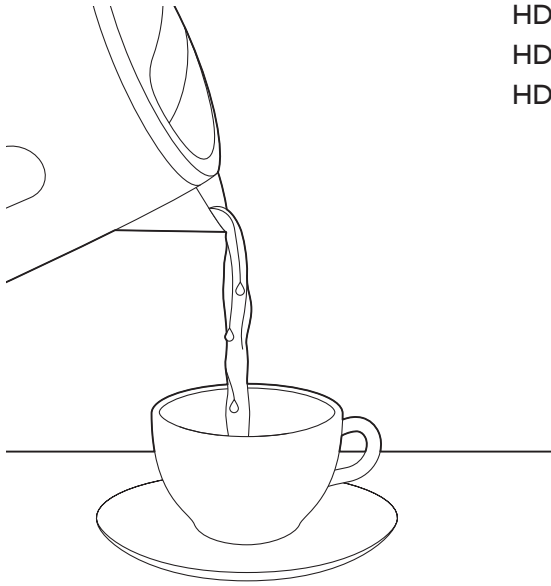


始终如一地为您提供帮助
请登录以下网址并得到相应的帮助
www.philips.com/welcome



HD9330
HD9331
HD9332
HD9333
HD9338

用户手册

PHILIPS

PHILIPS

产品 : 飞利浦电水壶
型号 : HD9330/HD9331
HD9332/HD9333
HD9338
额定电压 : 220V ~
额定频率 : 50Hz
额定输入功率 : 1910 W
容量 : 1.7 L
生产日期 : 请见产品本体
产地 : 中国广东佛山

飞利浦（中国）投资有限公司
上海市天目西路 218 号 1602 - 1605
全国顾客服务热线 : 4008 800 008

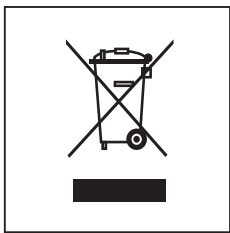
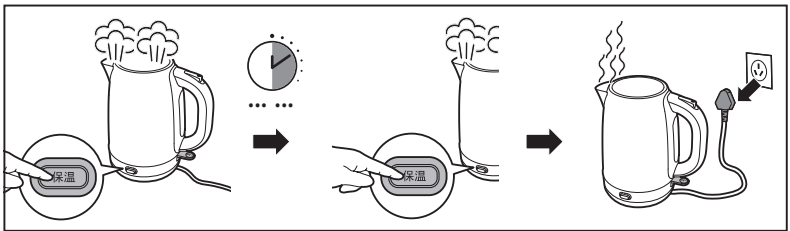
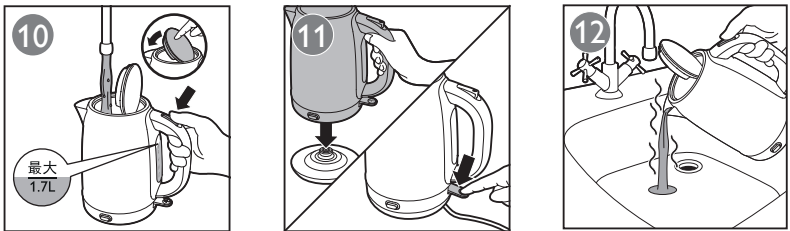
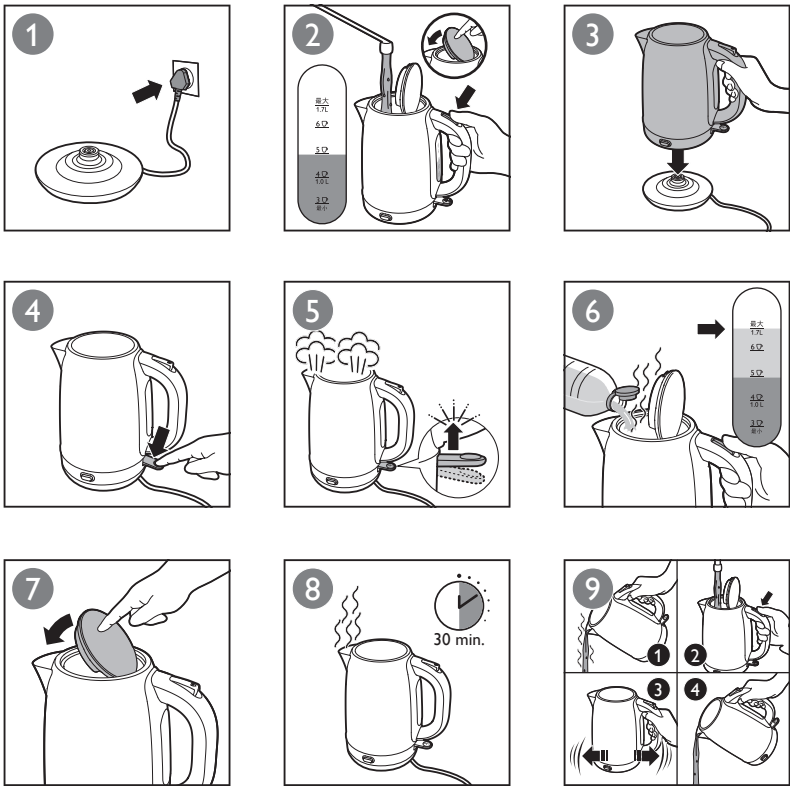
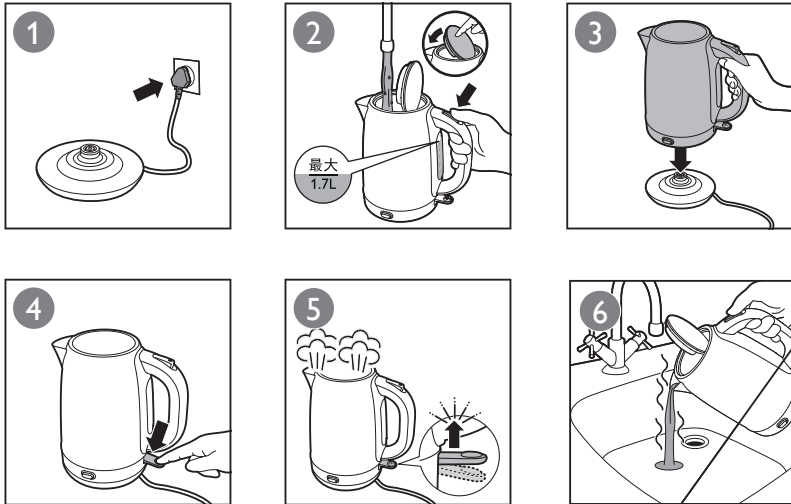
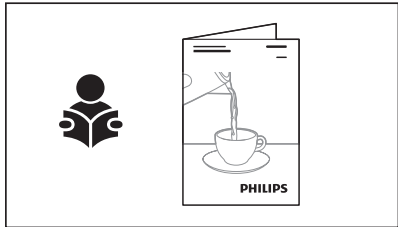
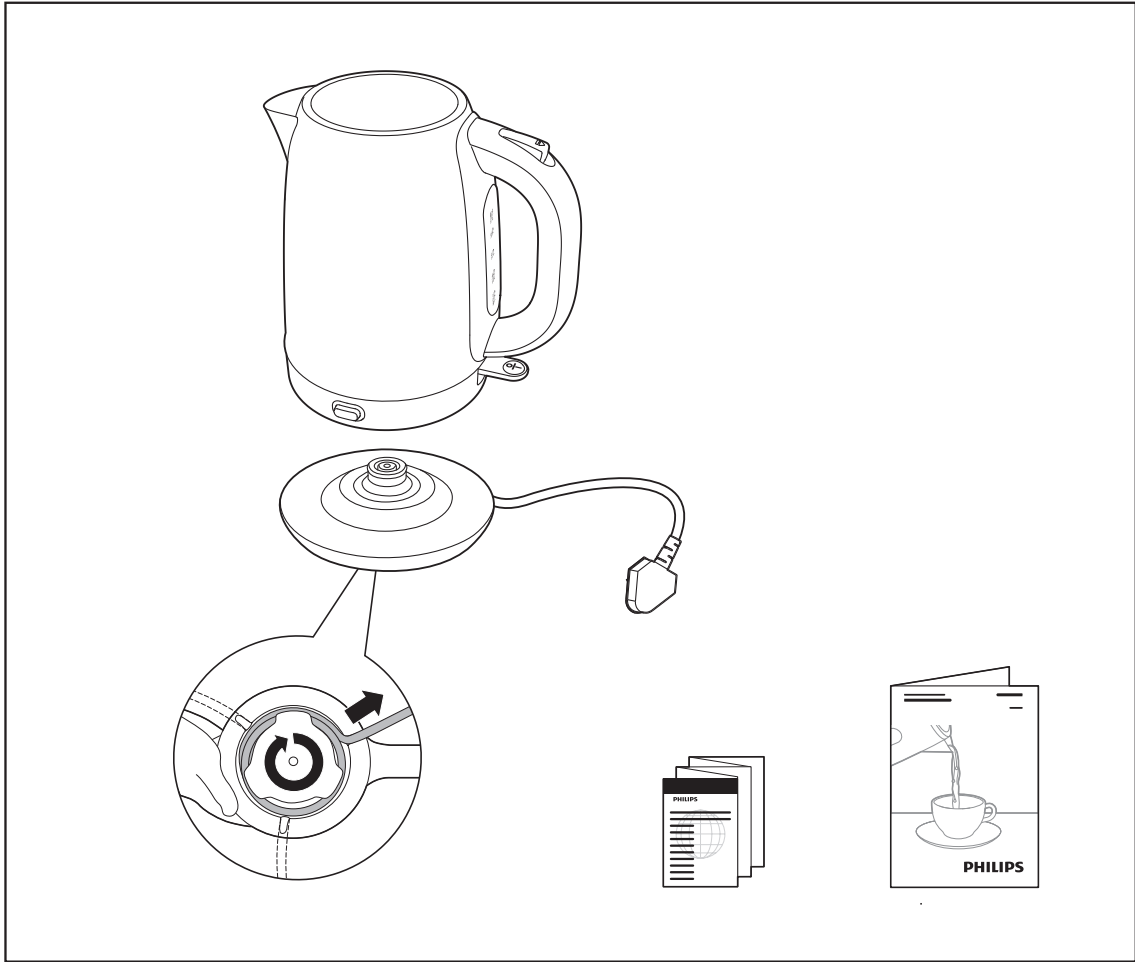
本产品根据国标 GB4706.1-2005,
GB4706.19-2008 制造



© 2016 Koninklijke Philips N.V.
发布日期: 2016-07-20
保留备用



4240 002 01013



ENGLISH

Introduction
Congratulations on your purchase and welcome to Philips!
To fully benefit from the support that Philips offers, register your product at www.philips.com/welcome.

Important
Read this important information carefully before you use the appliance and save it for future reference.

- Warning**
- Avoid spillage on the connector
 - Do not misuse this kettle for other than its intended use to avoid potential injury
 - Do not use the appliance if the plug, the mains cord, the base or the kettle itself is damaged. If the mains cord is damaged, you must have it replaced by Philips, a service centre authorised by Philips or similarly qualified persons in order to avoid a hazard.
 - This appliance can be used by children aged from 8 years and above and by persons with reduced physical, sensory or mental capabilities or lack of experience and knowledge if they have been given supervision or instruction concerning use of the appliance in a safe way and if they understand the hazards involved. Cleaning and user maintenance shall not be made by children unless they are older than 8 and supervised. Keep the appliance and its cord out of reach of children aged less than 8 years.
 - Children shall not play with the appliance.
 - Keep the mains cord, the base and the kettle away from hot surfaces.
 - Do not place the appliance on an enclosed surface (e.g. a serving tray), as this could cause water to accumulate under the appliance, resulting in a hazardous situation.
 - Unplug the appliance and let it cool down before you clean it. Do not immerse the kettle or base in water or any other liquid. Only clean the appliance with a moist cloth and a mild cleaning agent.


- Caution**
- Only connect the appliance to an earthed wall socket.
 - Only use the kettle in combination with its original base.
 - The kettle is only intended for heating up and boiling water.
 - Never fill the kettle beyond the maximum level indication. If the kettle has been overfilled, boiling water may be ejected from the spout and cause scalding.
 - Be careful: the outside of the kettle and the water in it become hot during and some time after use. Only lift the kettle by its handle. Also beware of the hot steam that comes out of the kettle.
 - This appliance is intended to be used in household and similar applications such as farm houses, bed and breakfast type environments, staff kitchen areas in shops, in offices and in other working environments and by clients in hotels, motels and other residential type environments.

Boil-dry protection
This kettle is equipped with boil-dry protection: it switches off automatically if you accidentally switch it on with no or not enough water in it. Let the kettle cool down for 10 minutes and then lift the kettle off its base. Then the kettle is ready for use again.

Electromagnetic fields (EMF)
This Philips appliance complies with all standards regarding electromagnetic fields (EMF).

Keep water warm (fig.5)
You can use the keep-warm function to keep water warm.

- 1 Press the keep warm button** .
- The keep warm light goes on.
 - The kettle keeps water warm.

- 2 Press the keep warm button**  **again to deactivate the keep-warm function.**
- The keep warm light goes out.

- Cleaning**
- Always unplug the base before you clean it
 - Never immerse the kettle or its base in water.

Cleaning the kettle and the base
Clean the outside of the kettle and the base with a moistened soft cloth.

Caution: Do not let the moist cloth come into contact with the cord, the plug and the connector of the base.

Descaling the kettle

Depending on the water hardness in your area, scale may build up inside the kettle over time. Scale may affect the performance of the kettle. Descale the kettle regularly by following the instructions in this user manual.

- We recommend the following descaling frequency:
- Once every 3 months for soft water areas (up to 18dH).
 - Once every month for hard water areas (more than 18dH).

Use white vinegar (4% acetic acid) in step 6. Rinse the kettle and then boil twice (steps 10-12) to remove all vinegar.

Ordering accessories
To buy accessories or spare parts, visit www.shop.philips.com/service or go to your Philips dealer. You can also contact the Philips Consumer Care Centre in your country (see the worldwide guarantee leaflet for contact details).

- Environment**
- Do not throw away the appliance with the normal household waste at the end of its life, but hand it in at an official collection point for recycling. By doing this, you help to preserve the environment (fig. 6).

Guarantee and support
If you need information or support, please visit www.philips.com/support or read the separate worldwide guarantee leaflet.

Troubleshooting
If your kettle does not function properly or if the kettle quality is insufficient, consult the table below. If you are unable to solve the problem, contact a Philips service center or the Consumer Care Center in your country.

Problem	Solution
The kettle switches off automatically before the water boils.	There is some scale in the kettle. Descale the kettle.
	There is not enough or no water in the kettle, and the boil-dry protection is activated. Add more water to the kettle.
The kettle does not work.	Make sure the plug is properly connected to the power socket.
	Make sure the power cord is not damaged.
	Make sure the kettle is not boiling dry.
There is unpleasant smell in the water.	Add water to the maximum level and pour two spoons of baking soda into the kettle, then boil the water and rinse the kettle.
There is some scale in the water, and the water is turbid.	The water hardness is high in the area you live. Descale the kettle.

简体中文

简介
恭喜您购买了您的产品，欢迎您来到 Philips 大家庭！为了您能充分享受飞利浦提供的支持，请在 www.philips.com/welcome 上注册您的产品。

重要信息
使用产品之前，请仔细阅读本重要信息，并妥善保管以供日后参考。

- 警告**
- 防止溢漏到连接器上。
 - 切勿错误地将该电水壶用于原定用途以外的用途，以免造成潜在的人身伤害。
 - 如果插头、电源线、底座或电水壶本身已经损坏，请勿使用本产品。如果电源软线损坏，为了避免危险，必须由制造商、其维修部或类似部门的专业人员更换。
 - 本产品适合由 8 岁或以上年龄的儿童以及肢体不健全、感觉或精神上有障碍或缺乏相关经验和知识的人士使用，但前提是有人对他们使用本产品进行监督或指导，以确保他们安全使用，并且让他们明白相关的危害。不要让儿童进行清洁

- 和保养，除非儿童已年满 8 周岁且在有人监督的情况下。应将产品及其线缆置于 8 周岁以下儿童触及不到的地方。
- 不得让儿童玩耍本产品。
 - 不要让电源线、底座和电水壶接触到热表面。
 - 不要将产品置于围封式表面（如餐盘）上，因为这可能引起产品下面积水，从而发生危险。
 - 清洁产品之前，先将电源插头拔掉，并待其冷却。不要将电水壶或底座浸入水或任何其他液体中。只能用湿布和温和的清洁剂清洁产品。


- 警告**
- 产品只能使用带接地线的插座。
 - 本水壶只能使用原装底座。
 - 电水壶只能用来加热和烧水。
 - 给电水壶加水时，不要超过最大水位标示。如果电水壶的水位过高，则水烧开时，会从壶嘴喷出，从而导致烫伤。
 - 注意：在使用过程中和使用后的短时间内，电水壶的外表面和壶中的水会变得很烫。只能通过手柄提起电水壶。也要当心电水壶中冒出的热蒸汽。
 - 本产品可用于家用及类似用途，如农庄、提供住宿和早餐类型的场所、商店、办公场所及其他工作环境中的员工厨房以及供旅店、旅馆及其他住宿型环境中的客人使用。

防干烧保护
该电水壶具有防干烧保护装置：如果在电水壶中无水或水太少的情況下意外通电，会自动切断电源。让电水壶冷却 10 分钟，然后再从底座上提起电水壶。这时电水壶方可再次使用。

电磁场 (EMF)
本飞利浦产品符合与电磁场 (EMF) 相关的所有标准。

保持水温（图 5）
您可以使用保温功能保持水温。

- 1 按下保温按钮** .
- 保温指示灯会亮起。
 - 电水壶开始保温。

- 2 再次按保温按钮**  **可禁用保温功能。**
- 保温指示灯会熄灭。

- 清洁**
- 清洁底座前，务必先将电源插头拔掉。
 - 切勿将水壶或底座浸入水中。

清洁电水壶和底座
用柔软湿布擦拭壶的外表面和底部。

注意：切勿让湿布与电线、插头和底座连接器接触。

产品中有害物质的名称及含量

部件名称	有害物质					
	铅(Pb)	汞(Hg)	镉(Cd)	六价铬(Cr(VI))	多溴联苯(PBB)	多溴二苯醚(PBDE)
电源线	×	○	○	○	○	○
线路板	×	○	○	○	○	○
温控器	×	○	○	○	○	○
本表格依据 SJ/T11364 的规定编制。 ○ 表示该有害物质在该部件所有均质材料中的含量均在 GB/T26572 规定的限量要求以下。 × 表示该有害物质至少在该部件的某一均质材料中的含量超出 GB/T26572 规定的限量要求。						

去除水垢

根据您所在地区水的硬度，一段时间后，电水壶内可能会积聚水垢。水垢可能会影响电水壶的性能。按照用户手册中的说明定期为电水壶除垢。

- 我们建议您按以下频率去除水垢：
- 在软水（最高 18dH）地区，每三个月一次。
 - 在硬水（大于 18dH）地区，每月一次。
- 在步骤 6 中使用白醋（4% 醋酸）。冲洗电水壶并煮两次水（步骤 10-12）以去除所有白醋。

订购附件
要购买附件或备件，请访问 www.shop.philips.com/service 或联系您的飞利浦经销商。您也可以联系您所在国家/地区的飞利浦客户服务中心（联系详情，请参阅全球保修卡）。

环保
- 弃置产品时，请不要将其与一般生活垃圾堆放在一起，应将其交给政府指定的回收中心。这样做有利于环保（图 6）。

保修和支持
如果您需要信息或支持，请访问 www.philips.com/support 或阅读单独的全球保修卡。

故障种类和处理方法
如果电水壶工作不正常或质量有缺陷，请查询下表。如果无法解决问题，则请联系您所在国家/地区的飞利浦服务中心或客户服务中心。

问题	解决方法
电水壶会在水煮沸前自动关闭。	电水壶中有水垢。为电水壶除垢。
	电水壶中水量不足或没有水，防干烧保护功能已启动。向电水壶中加入更多的水。
电水壶无法工作。	确保插头已正确连接到电源插座。
	确保电源线未损坏。
	确保电水壶未烧干。
水中有难闻的气味。	请加水至最高水位，并向电水壶中倒入 2 匙小苏打，然后将水烧开并冲洗电水壶。
水中有一些水垢，将水变浑浊了。	您居住区域的水硬度较高。为电水壶除垢。