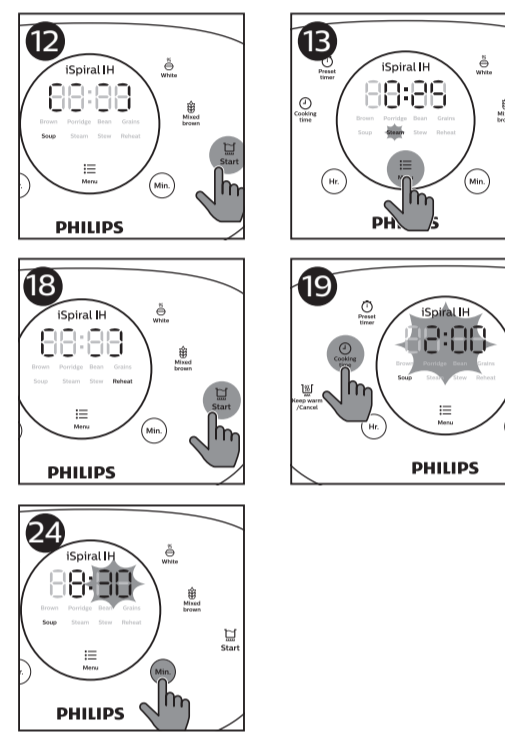
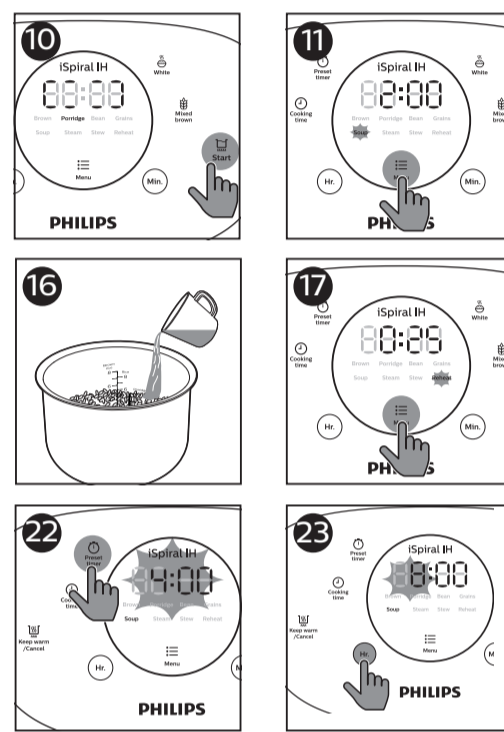
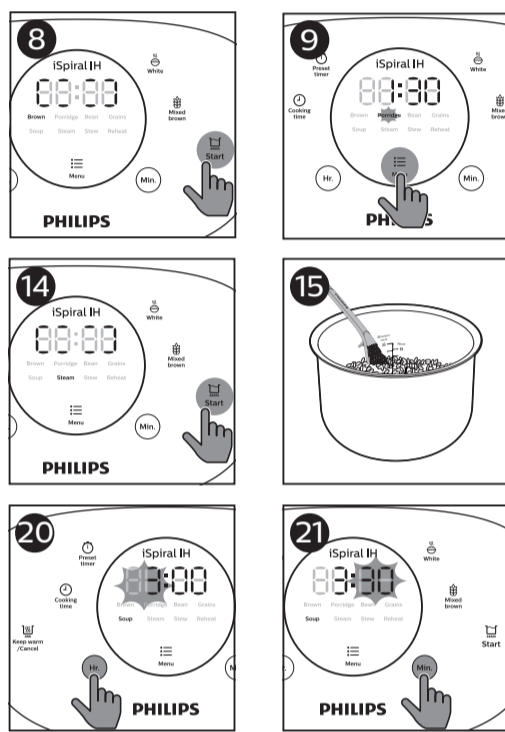
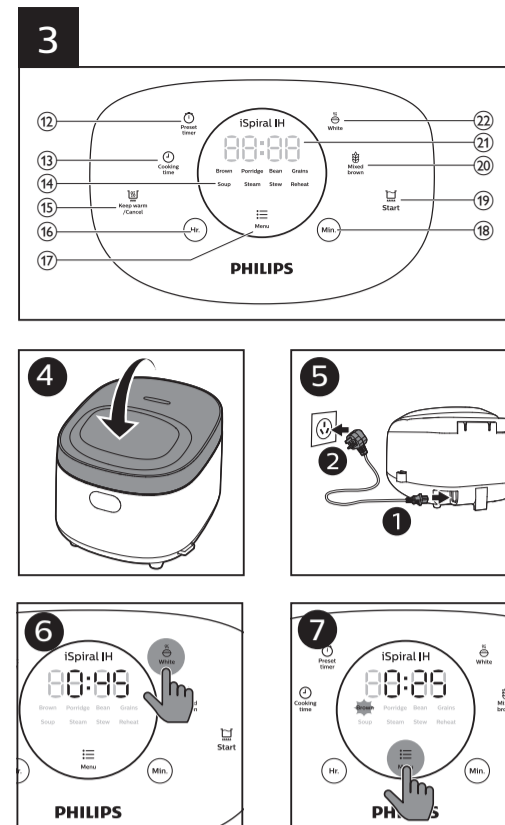
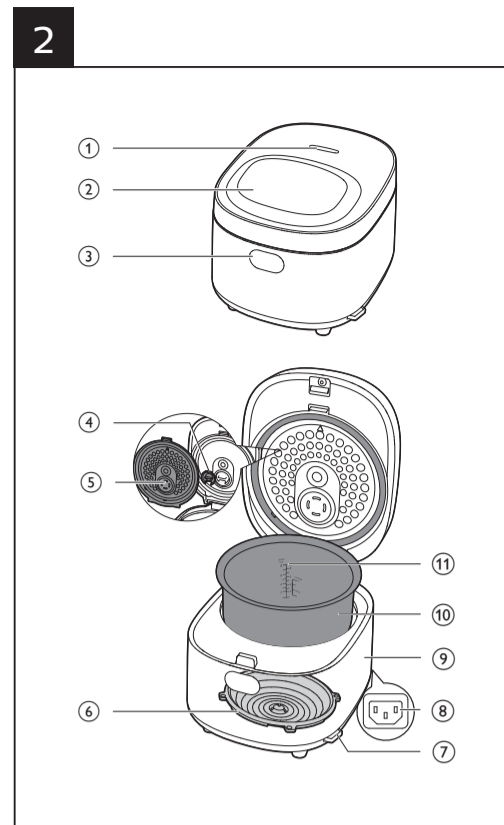




EN User manual TH คู่มือผู้ใช้
MS Manual pengguna



©2019 Koninklijke Philips N.V.
All rights reserved.
HD4528_UM_Asean_v2.0



English

1 Important

Read this user manual carefully before you use the Rice cooker and save it for future reference.

Danger

- The appliance must not be immersed.

Warning

- This appliance is not intended for use by persons (including children) with reduced physical sensory or mental capabilities, or lack of experience and knowledge, unless they have been given supervision or instruction concerning use of the appliance by a person responsible for their safety.
- Children should be supervised to ensure that they do not play with the appliance.
- This appliance should be positioned in a stable situation with the handles (if any) positioned to avoid spillage of the hot liquids.
- This appliance is intended to be used in household and similar applications such as:
 - Staff kitchen areas in shops, offices and other working environments;
 - Farm houses;
 - By clients in hotels, motels and other residential type environments;
 - Bed and breakfast type environments.

- If the power cord set is damaged, it must be replaced by a cord set available from the manufacturer.
- The appliance is not intended to be operated by means of an external timer or a separate remote-control system.
- Check if the voltage indicated on the appliance corresponds to the local power voltage before you connect it.
- Only connect the appliance to a grounded power outlet. Always make sure that the plug is inserted firmly into the power outlet.
- Do not use the appliance if the plug, the power cord, the inner pot, the sealing ring, or the main body is damaged.
- Do not let the power cord hang over the edge of the table or worktop on which the appliance stands.
- Make sure the heating element, the temperature sensor, and the outside of the inner pot are clean and dry before you put the plug in the power outlet.
- Do not plug in the appliance or press any of the buttons on the control panel with wet hands.
- WARNING: Make sure to avoid spillage on the power connector to avoid a potential hazard.
- WARNING: Always follow the instructions and use the appliance properly to avoid potential injury.

- Don't place the power cord under the appliance when in use.
- When placing the steaming basket, avoid touching the side wall of the inner pot, otherwise it may cause deformation due to high temperature.
- CAUTION: Surface of the heating element is subject to residual heat after use.
- Never use any accessories or parts from other manufacturers or that Philips does not specifically recommend. If you use such accessories or parts, your guarantee becomes invalid.
- Do not expose the appliance to high temperatures, nor place it on a working or still hot stove or cooker.
- Do not expose the appliance to direct sunlight.
- Place the appliance on a stable, horizontal, and level surface.
- Always put the inner pot in the appliance before you put the plug in the power outlet and switch it on.
- Do not place the inner pot directly over an open fire to cook rice.
- Do not use the inner pot if it is deformed.
- The accessible surfaces may become hot when the appliance is operating. Take

- extra caution when touching the appliance.
- Beware of hot steam coming out of the steam vent during cooking or out of the appliance when you open the lid. Keep hands and face away from the appliance to avoid the steam.
- Do not lift and move the appliance while it is operating.
- Do not exceed the maximum water level indicated in the inner pot to prevent overflow which might cause potential hazard.
- Do not place the cooking utensils inside the pot while cooking, keeping warm or reheating rice.
- Only use the cooking utensils provided. Avoid using sharp utensils.
- To avoid scratches, it is not recommended to cook ingredients with crustaceans and shellfish. Remove the hard shells before cooking.
- Do not insert metallic objects or alien substances into the steam vent.
- Do not place a magnetic substance on the lid. Do not use the appliance near a magnetic substance.
- Always let the appliance cool down before you clean or move it.
- Always clean the appliance after use. Do not clean the appliance in a dishwasher.

- Always unplug the appliance if not used for a longer period.
- If the appliance is used improperly or for professional or semiprofessional purposes, or if it is not used according to the instructions in this user manual, the guarantee becomes invalid and Philips refuses liability for any damage caused.

Electromagnetic fields (EMF)

This Philips appliance complies with all applicable standards and regulations regarding exposure to electromagnetic fields.

2 Your Rice cooker

Congratulations on your purchase, and welcome to Philips! To fully benefit from the support that Philips offers, register your product at www.philips.com/welcome.

3 What's in the box (fig. 1)

Rice cooker main unit	Measuring cup
Rice and soup 2 in 1 spoon	Power cord
Steaming basket	User manual
Warranty card	

4 Overview (fig. 2)

① Steam vent	⑦ Rice spoon lock
② Control panel	⑧ Power socket
③ Lid release button	⑨ Main body
④ Steam valve	⑩ Inner pot
⑤ Detachable inner lid	⑪ Water level indications
⑥ Heating element	

Controls overview (fig. 3)

⑭ Preset timer button	⑳ Minute button
⑮ Cooking time button	㉑ Start button
⑯ Menu display	㉒ Mixed brown button
⑰ Keep-warm/Cancel button	㉓ Time display
⑱ Hour button	㉔ White button
㉕ Menu button	

5 Using the Rice cooker

Before first use

- Take out all the accessories from the inner pot. Remove the packaging material of the inner pot.
- Before first use, boil water and clean the Rice cooker.
- Clean the parts thoroughly before using it for the first time (see chapter "Cleaning and Maintenance").

Note

- Make sure all parts are completely dry before you start using the Rice cooker.

Cooking rice

Cooking function	Estimated cooking time	Time regulation	Preset time
White	45 minutes	/	1-24 hours
Brown	60 minutes	/	1-24 hours
Mixed Brown	45 minutes	/	1-24 hours
Grains	60 minutes	/	1-24 hours

You can cook rice using the White, Brown, Mixed brown or Grains function.
 1 Measure rice using the measuring cup provided.
 2 Rinse rice, and put the washed rice in the inner pot.
 3 Add water to the level indicated on the scale inside the inner pot that corresponds to the number of cups of rice used. Then smooth the rice surface.
 ↳ For instance, if you cook 4 cups of rice, add water up to the 4-cup level indicated on the scale.

Note

- The level marked inside the inner pot is just an indication. You can always adjust the water level for different types of grains and your own preference.
- Besides following the water level indications, you may also add rice and water at 1:1-1.2 ratio for rice cooking.
- Do not exceed the volume indicated or exceed the maximum water level, as this may cause the appliance to overflow.

- Wipe off water outside of the inner pot and put it into the appliance.

Note

- Make sure that the outside of the inner pot is dry and clean, and that there is no foreign residue on the inside of the appliance.

- Close the lid (fig. 4), and put the plug in the power socket (fig. 5), and switch on the appliance.
- Press the **White** or **Mixed Brown** button (fig. 6), or select the **Brown** or **Grains** function by pressing the menu button (**Menu**) (fig. 7).
- Press the start button (**Start**) to start cooking (fig. 8).
- When the cooking is finished, you will hear 4 beeps and the selected cooking function light will be off.
- The Rice cooker will be in keep-warm mode automatically.
 ↳ The keep-warm indicator lights up.

Note

- If the voltage is unstable at the area you live, it is possible that the Rice cooker overflows.
- After the cooking is finished, stir the rice and loosen it immediately to release excessive moisture for fluffy rice.
- Depending on the cooking conditions, the bottom portion of the rice may become slightly browned.
- Please stir rice after cooking, and you are recommended to consume it right after cooking for best nutrition and best taste. If you would like to keep rice for long hours and for many meals, it is best to keep rice in sealed plastic containers and keep them in the refrigerator and reheat it to avoid nutrient loss.
- If you want / need to change selector, you first need to press the **Keep warm/Cancel** button.

Cooking porridge

Cooking function	Estimated cooking time	Time regulation	Preset time
Porridge	90 minutes	1-4 hours	1-24 hours

- Put ingredients and water into the inner pot.
- Follow steps 4 to 5 in "Cooking rice".

Note

- Do not exceed the maximum water level indicated in the inner pot, as this may cause the Rice cooker to overflow.

- Select the porridge (**Porridge**) function by pressing the menu button (**Menu**) (fig. 9).
- Press the start button (**Start**) to start cooking (fig. 10).
- When the cooking is finished, you will hear 4 beeps and the selected cooking function light will be off. The Rice cooker will be in keep warm mode automatically.
 ↳ The keep-warm indicator lights up.

Bean, Soup, Stew

Cooking function	Estimated cooking time	Time regulation	Preset time
Bean	90 minutes	40 minutes-2 hours	1-24 hours
Soup	2 hours	1-4 hours	1-24 hours
Stew	1 hours	30 minutes-8 hours	1-24 hours

- Put beans and water into the inner pot.
- Follow steps 4 to 5 in "Cooking rice".

Note

- Do not exceed the maximum water level indicated in the inner pot, as this may cause the Rice cooker to overflow.

- Select the **Bean, Soup** or **Stew** function by pressing the menu button (**Menu**) (fig. 11).
- Press the start button (**Start**) to start cooking (fig. 12).
- When the cooking is finished, you will hear 4 beeps and the selected cooking function light will be off. The Rice cooker will be in keep warm mode automatically.
 ↳ The keep-warm indicator lights up.

Steaming food

Cooking function	Estimated cooking time	Time regulation	Preset time
Steam	25 minutes	5-59 minutes	NA

- Measure a few cups of water with the measuring cup.
- Pour the water into the inner pot.
- Put the steam basket into the inner pot.
- Put the food into the steam basket.
- Follow steps 4 to 5 in "Cooking rice".

Note

- Do not exceed the maximum water level indicated in the inner pot, as this may cause the Rice cooker to overflow.
- Add 5 cups of water at least to the inner pot when using the Steam function.

- Select the **Steam** function by pressing the menu button (**Menu**) (fig. 13).
- Press the start button (**Start**) to start cooking (fig. 14).
- When the cooking is finished, you will hear 4 beeps and the selected cooking function light will be off. The Rice cooker will be in keep warm mode automatically.
 ↳ The keep-warm indicator lights up.

Reheating

Cooking function	Estimated cooking time	Time regulation	Preset time
Reheat	25 minutes	25-59 minutes	/

- Loosen the cooled food and evenly distribute it in the inner pot (fig. 15).
- Pour some water onto the food to prevent it from becoming too dry (fig. 16). The quantity of the water depends on the amount of food.
- Follow steps 5 and 6 in "Cooking rice".
- Select the reheat function (**Reheat**) by pressing the menu button (**Menu**) (fig. 17).
- Press the start button (**Start**) to start cooking (fig. 18).
- When the cooking is finished, you will hear 4 beeps and the selected cooking function light will be off. The Rice cooker will be in keep warm mode automatically.
 ↳ The keep-warm indicator lights up.

Note

- Use a kitchen glove or a cloth, as the plate will be very hot.
- You can cook rice while steaming food. Do not exceed the volume indicated, as this may cause the Rice cooker to overflow.
- You can adjust the water level as needed.

Adjusting the cooking time

- You can set the cooking time for some menus. Refer to the cooking time table in each chapter for the detailed regulating range.
- Choose the function you need.
 - To set a different cooking time, press the **Cooking time** button (fig. 19), and the default cooking time starts flashing on the display.

- Press the **Hr.** button to set the hour unit (fig. 20).
- After the hour unit is set, wait for a few seconds before the hour unit is confirmed, and the minute unit starts flashing on the display.
- Press the **Min.** button to set the minute unit (fig. 21).
- Press the start button to confirm the cooking time and start the cooking process.

Note

- You can not adjust the cooking time in the **White, Brown, Mixed Brown, Grains** function.

Preset time for delayed cooking

You can preset the delayed cooking time for some menus. The preset timer is available from 1 hour up to 24 hours.

Note

- The preset timer is not available in the reheat (**Reheat**) function.
- The cooking process will be finished by the time the preset time has elapsed. If the preset time you set is shorter than the cooking time, the appliance will start the cooking process immediately.

- Choose the function you need.
- To preset time for delayed cooking, press the **Preset timer** button, and the default preset time starts flashing on the display (fig. 22).
- Press the **Hr.** button to set the hour unit (fig. 23).
- After the hour unit is set, wait for a few seconds before the hour unit is confirmed, and the minute unit starts flashing on the display.
- Press the **Min.** button to set the minute unit (fig. 24).
- Press the start button to confirm the preset timer and start the cooking process.

6 Cleaning and Maintenance

Note

- Unplug the Rice cooker before starting to clean it.
- Wait until the Rice cooker has cooled down sufficiently before cleaning it.

Interior

Inside of the top lid and the main body:
 • Wipe with a damp cloth.
 • Make sure to remove all the food residues stuck to the Rice cooker.
 Heating element:
 • Wipe with a damp cloth.
 • Remove food residues with a damp cloth.

Exterior

Surface of the top lid and outside of the main body:
 • Wipe with a cloth damped with soap water.
 • Only use soft and dry cloth to wipe the control panel.
 • Make sure to remove all the food residues around the control panel.

Accessories

- Spatula, inner pot, and steam vent cap:
 • Soak in hot water and clean with sponge.

7 Recycling

Do not throw away the product with the normal household waste at the end of its life, but hand it in at an official collection point for recycling. By doing this, you help to preserve the environment. Follow your country's rules for the separate collection of electrical and electronic products. Correct disposal helps prevent negative consequences for the environment and human health.

8 Guarantee and service

If you need service or information, or if you have a problem, visit the Philips website at www.philips.com or contact the Philips Customer Care Center in your country. You can find its phone number in the worldwide guarantee leaflet. If there is no Customer Care Center in your country, go to your local Philips dealer.

9 Specifications

Model Number	HD4528
Rated power output	1500W
Rated capacity	4.0L
Rice capacity	1.5L

10 Troubleshooting

If you encounter problems when using this Rice cooker, check the following points before requesting service. If you cannot solve the problem, contact the Philips Consumer Care Center in your country.

Problem	Solution
The light on the button does not go on.	There is a connection problem. Check if the power cord is connected to the Rice cooker properly and if the plug is inserted firmly into the power outlet. The light is defective. Take the appliance to your Philips dealer or a service center authorized by Philips.
The rice is not cooked.	There is not enough water. Add water according to the scale on the inside of the inner pot. Make sure that there is no foreign residue on the heating element and the outside of the inner pot before switching the Rice cooker on.
The rice is too dry and not well cooked.	The heating element is damaged, or the inner pot is deformed. Take the Rice cooker to your Philips dealer or a service center authorized by Philips. Add more water to the rice, and cook for a bit longer.

Problem	Solution
The Rice cooker does not switch to the keep-warm mode automatically.	You might have pressed the keep-warm button before pressing the start button. In this case the Rice cooker will be in standby mode after the cooking is finished. The temperature control is defective. Take the appliance to your Philips dealer or a service center authorized by Philips.
The rice is scorched.	You have not rinse the rice properly. Rinse the rice until the water runs clear.
Water spills out of the Rice cooker during cooking.	Make sure that you add water to the level indicated on the scale inside the inner pot that corresponds to the number of cups of rice used.
Rice smells bad after cooking.	Clean the inner pot with some washing detergent and warm water. After cooling, make sure the steam vent cap, inner lid and inner pot is cleaned thoroughly.

Bahasa Melayu

1 Penting

Baca manual pengguna ini dengan teliti sebelum anda menggunakan Pemasak nasi ini dan simpan untuk rujukan masa hadapan.

Bahaya

- Perkakas tidak boleh direndam.

Amaran

- Perkakas ini bukan dimaksudkan untuk kegunaan orang (termasuk kanak-kanak) yang kurang upaya dari segi fizikal, deria atau mental, atau kurang berpengalaman dan pengetahuan, kecuali mereka diawasi atau diberi arahan berkenaan penggunaan perkakas ini oleh orang yang bertanggungjawab atas keselamatan mereka.
- Kanak-kanak perlu diawasi untuk memastikan mereka tidak bermain dengan perkakas ini.
- Perkakas ini hendaklah diletakkan di tempat yang stabil iaitu pemegangnya (jika ada) diletakkan untuk mengelakkan tumpahan cecair yang panas.
- Perkakas ini dimaksudkan untuk digunakan di dalam rumah dan untuk penggunaan lain yang serupa seperti:
 - Kawasan dapur pekerja di kedai, pejabat dan persekitaran kerja yang lain;
 - Rumah ladang;
 - Oleh pelanggan di hotel, motel dan persekitaran tempat menginap yang lain;
 - Persekitaran jenis inap-sarapan.
- Jika set kord kuasa rosak, kord perlu digantikan dengan set kord daripada pengeluar.
- Perkakas ini tidak dimaksudkan untuk dikendalikan menggunakan pemasa luaran atau sistem kawalan jauh yang berasingan.
- Semak jika voltan yang ditunjukkan pada perkakas sepadan dengan voltan sesalur kuasa tempatan sebelum anda menyambungkannya.
- Anda hendaklah menyambungkan perkakas ke alur keluar kuasa yang dibumikan. Anda perlu memastikan bahawa palam dimasukkan dengan betul pada alur keluar kuasa.
- Jangan gunakan perkakas jika palam, kord kuasa, periuk dalam, sendal getah atau bekas utama rosak.

Awas

- AWAS: Permukaan elemen pemanas mungkin mempunyai baki hanya selepas penggunaan.
- Jangan sekali-kali gunakan aksesori atau barang-barang ganti daripada pengilang lain atau pengilang yang tidak disyorkan oleh Philips. Jika anda menggunakan aksesori atau barang-barang ganti sedemikian, jaminan anda menjadi tidak sah.
- Jangan dedahkan perkakas pada suhu tinggi, ataupun meletakkannya pada pemanas atau dapur yang sedang terpasang atau masih panas.
- Jangan dedahkan perkakas pada cahaya matahari langsung.
- Letakkan perkakas pada permukaan yang stabil, mendatar dan rata.
- Letak periuk dalam ke dalam perkakas sebelum anda memasukkan palam pada salur keluar kuasa dan menghidupkan perkakas.
- Jangan letakkan periuk dalam terus di atas api terbuka untuk memasak nasi.
- Jangan gunakan periuk dalam sekiranya ia cacat.
- Permukaan yang dapat dicapai mungkin menjadi panas apabila perkakas beroperasi. Ambil langkah lebih berhati-hati apabila menyentuh perkakas.
- Berhati-hati dengan stim panas yang keluar dari bolong stim semasa memasak atau yang keluar dari perkakas semasa anda membuka tudungnya. Jauhkan tangan dan muka daripada perkakas untuk mengelakkan daripada stim.

- Jangan biarkan kord kuasa terjunta dari tepi meja atau permukaan ruang kerja tempat perkakas itu diletakkan.
- Diletakkan elemen pemanas, sensor suhu dan bahagian luar periuk dalam bersih dan kering sebelum anda memasukkan palam ke dalam saluran keluar kuasa.
- Jangan masukkan palam perkakas atau tekan sebarang butang pada panel kawalan dengan tangan yang basah.
- AMARAN: Pastikan anda mengelakkan tumpahan pada penyambung kuasa untuk mengelakkan kemungkinan bahaya.
- AMARAN: Sentiasa ikuti arahan dan menggunakan perkakas dengan betul untuk mengelakkan kemungkinan kecederaan.
- Jangan letakkan kord kuasa di bawah perkakas semasa sedang digunakan.
- Apabila meletakkan bakul pengukusan, elakkan daripada bersentuh dengan sisi dinding periuk dalam, jika tidak kecacatan mungkin akan berlaku akibat suhu yang tinggi.

