

Зареєструйте продукт і получите підтримку на веб-сайті

www.philips.com/welcome

HD3075

HD3077



Руководство пользователя

Посібник користувача

User Manual

PHILIPS

HD3075, HD3077

Русский	5
Українська	31
English	57

CONTENTS

1	Important	58	8	Functions & Instructions	65
	Do	58		RICE	65
	Don't	58		Porridge	68
	Must operate with caution as required	58		BOIL	70
	Power-down memory	59		STEAM	71
	Environment	59		REHEAT	73
	Warranty and Sales Service Guarantee	59		Oven	74
				Pan fry	75
				STEW	76
				Timing Preset	77
				Child-Lock	77
2	Introduction	60			
3	Product Overview	61	9	Maintenance	78
	Accessories	61		Vapor Valve Cleaning Tips	78
				Tips of Cover (Seal) Cleaning	79
4	Control panel	62		Tips of Inner Pot Cleaning	79
				Tips of Sensor and Heat Plate Cleaning	80
				Tips of Accessory Cleaning	80
5	Table of Corresponding Function Parameters	62			
6	Model Specification	63	10	Analysis of malfunctions and solutions	81
7	Use	64			
	First time use	64			
	Set the clock	64			

1 Important

Before using the Product, please read the user manual carefully, and keep it with you for further reference later.

For safety reasons, this manual demonstrates several ways of not following the safety guide, resulting potential risks of accidents.

! Do

- Insert the plug into the outlet for the multi-function rice cooker. Before switching on, please make sure that the voltage marked on the rice cooker matches power supply voltage.
- The Product may use only a power outlet with a ground wire. Please make sure the plug firmly attached to the power outlet.
- If the power cord is damaged, for safety concerns, please have the cord replaced by the manufacturer, maintenance department or qualified persons.
- In order to avoid being tipped and causing burns, please make sure that the multi-function rice cooker is placed where out of the reach for children. When cooking, touching the function key may cause the rice cooker to stop functioning.
- Unless there are people responsible for the safety supervising or guiding for the use of the Product, it is not intended to be used by those with physical disabilities, sensory or mental illness, or those who are lack of related experience and knowledge (including children). Please supervise the children, make sure that they do not toy with the Product.
- Please place the multi-function rice cooker on a solid and flat surface. Do not place the rice cooker in the water or high temperature and humid environment, or near other source of heat. Please do not heat up the inner pot directly on fire.
- Before plugging into the power outlet, please make sure that the heating components, temperature sensor and the outside of the inner pot are clean and dry. Dirt or objects may cause the multi-function rice cooker to malfunction.
- When removing the inner pot, please make sure the Product is disconnected from the power outlet.
- If the Product is not to be used shortly, please unplug it.

⊘ Don't

- Please do not unplug the power plug or touch any buttons on the control panel with wet hands.
- Please do not remodel, disassemble or repair the multi-function rice cooker on your own.
- Please do not connect the Product with external timer for safety reasons.
- Please do not wash the multi-function rice cooker in the water.
- Please do not heat up the inner pot directly on fire.
- Please do not expose the Product in high temperature; please do not place the multi-function rice cooker on active or hot stove or cooker.
- Please do not lift or move the multi-function rice cooker while cooking.
- Please do not put the deformed inner pot into the multi-function rice cooker.
- Please do not use any accessories or components manufactured by other manufacturers or not specially recommended by Philips. The Company takes no responsibilities in adverse consequences caused by using such accessories or components.

⚠ Must operate with caution as required

- Before plugging in and switching on, please ensure that the inner pot is placed in the Product.
- Please be careful with the steam discharged from the vapor valve when cooking, or when opening the lid. Keep your hands and face away from the multi-function rice cooker to avoid being scalded by the steam.
- Please do not cover the lid with cloth, as it may deform or discolor the lid.
- When adding water, please do not exceed the maximum water level mark to keep the water from overflowing when cooking, which may be dangerous.
- Do not use the Product near magnetic materials.

Power-down memory

The multi-function rice cooker is equipped with the function of power-down memory, which allows the Product to recall the state before the power failure.

- 1 If the multi-function rice cooker shuts down while cooking, and powers up within 2 hours after power-down, the cooker will resume to its task state prior to the power-down.
 - 2 If the multi-function rice cooker shuts down before the preset time for cooking, and powers up within 2 hours after power-down, the cooker will start cooking as preset.
 - 3 If the multi-function rice cooker powers up after 2 hours, both states mentioned above are revoked and the cooker is restored to standby mode. Now you will need to restart the cooking or preset the time.
- If the battery is low, it will affect the time of power-down memory.

Warranty and Sales Service Guarantee

If you need the service or detailed information, or any question, please visit Philips' website at www.philips.com. You may also contact with your local Philips Customer Service Center (contact number is available on your warranty card). If there are no Philips Customer Service Centers in your country or area, please contact your local Philips dealers.

Environment



Please do not dispose the Product as general waste. Please recycle the Product to the Government-designated recycling centers. This is conducive to environmental protection.

Note: All contents listed in the Manual are proven and verified. Should there be any typographical errors or misunderstanding regarding the contents, the Company reserves the right of final explanation. Product design and specifications are subject to change without notice; the Product purchased prevails in kind.

2 Introduction

HD3075/HD3077 Multi-Function Rice Cooker is a smart cooker developed with innovative technologies. It has a user-friendly control panel, advanced structure and modern design, it is the ideal cookware for modern families.

One cooker with different functions, easy to use

- 1 The Product can cook rice and porridge, as well as boil, steam, reheat, barbecue, pan fry, stew, etc.
- 2 Please select the function keys accordingly based on your cooking experiences. You can just press on the desired key, and leave the rest to the Product. The alarm will notify you upon task completion, and the Product will switch to keep warm mode automatically without additional operation. The Product is equipped with a timing (24 hours) function. After the time is set, it will start counting down. When the count-down is finished, so is the cooking task.

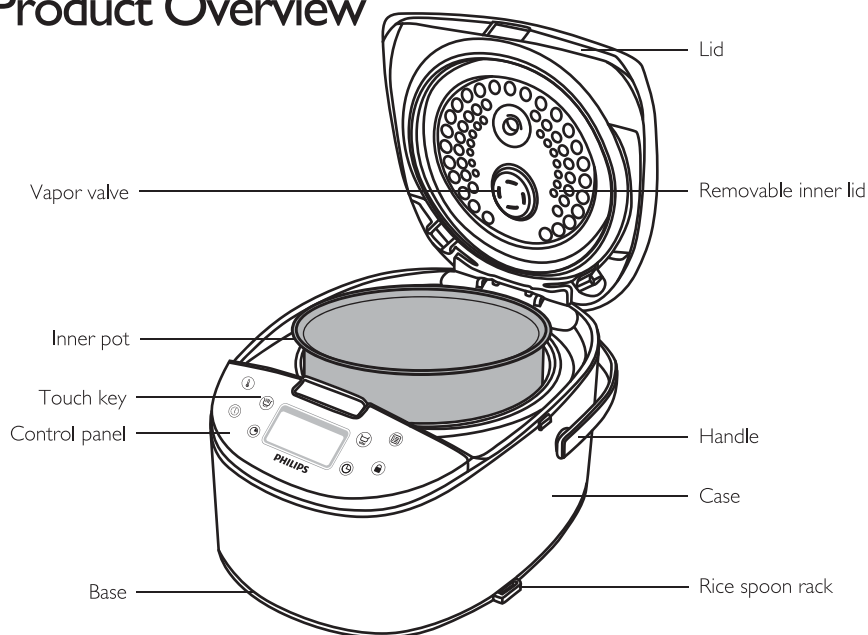
Advanced technology, innovative concept

- 1 6 Special Features: Spill-proof, scorch-proof, stick-proof, wear-proof, leak-proof, and cockroach-proof. All aspects, all the first.
- 2 Innovative designing concept
Delicious: Micro-pressure cooking, reasonable temperature control, scientific cooking conserving the nutrition, as well as the original fragrance of the rice.
Healthy: Golden inner pot, high temperature boiling, clean and environmentally friendly keeping your family healthy.

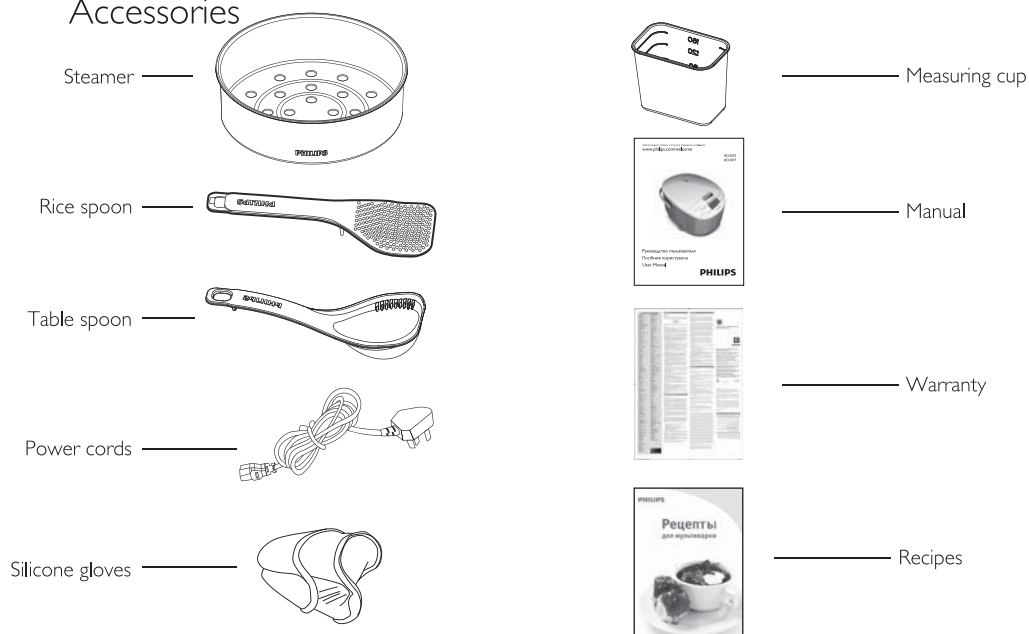
Advanced structuring, safety is guaranteed

- 1 User-friendly design with 8 different cooking functions, cooking has never been so easy and fun.
- 2 With preset timing for 24 hours, you can preset the finish time for cooking, and are not required to attend it the whole time. It is not only time saving, but also convenient.
- 3 Protection for the sensor in case of malfunction: When the temperature sensor fails, all indicators are lit up with the alert beeping for 20 times in a row. The multi-function cooker becomes not usable until the problem is corrected and the Product is reconnected to reboot the system.
- 4 Safety device for limiting the temperature: When the temperature inside the pot is higher than the rated temperature, the Product stops heating up automatically until it cools down.
- 5 Safety device for over-temperature protection: When the temperature inside the pot reaches to the maximum rated point, the Product shuts down automatically (you may need to bring the Product to the repairing network for maintenance).

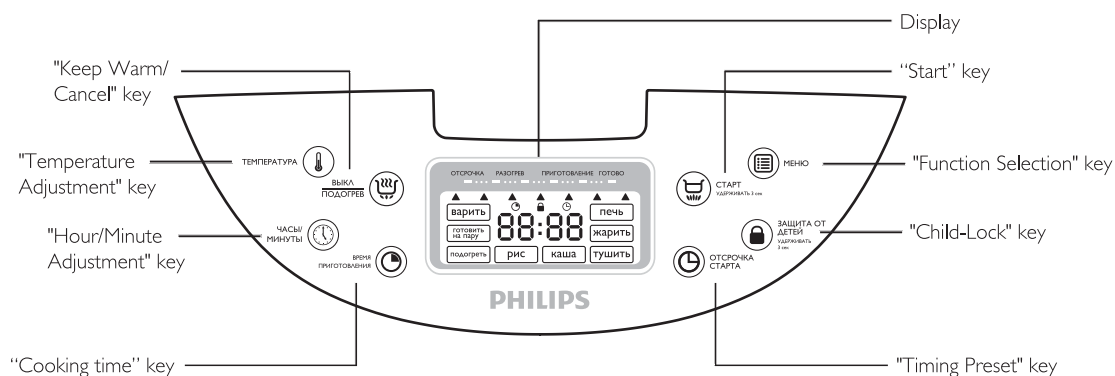
3 Product Overview



Accessories



4 Control Panel



5 Table of Corresponding Function Parameters

Functions	Default cooking time	Adjustable range for cooking time	Adjustable timing preset	Temperature setting
BOIL	30 Minutes	5-30 Minutes	24 Hours	90 – 95 °C
STEAM	30 Minutes	5 Minutes - 2 Hours	24 Hours	90 – 95 °C
REHEAT	25 Minutes	8-25 Minutes	24 Hours	80 – 85 °C
RICE *	30-40 Minutes	/	24 Hours	130 – 140 °C
Porridge	2 Hours	1-4 Hours	24 Hours	90 – 95 °C
STEW	1 Hour	20 Minutes - 2 Hours	24 Hours	90 – 95 °C
Pan fry	42 Minutes	5-59 Minutes	/	160 – 180 °C
○	45 Minutes	20 Minutes - 2 Hours	/	130 – 140 °C

- Please add more or reduce the amount of rice and water according to your preference and preferred rice texture.

6 Model Specification

Model	HD3075	HD3077
Rated power supply	220Vac/50Hz	
Rated power	980W	980W
Volume	4.0L	5.0L
Rice (cup)	1-8	1-10
Length X Width X Height (mm)	375X284X233	375X284X255
Weight (kg)	3.8	4.0

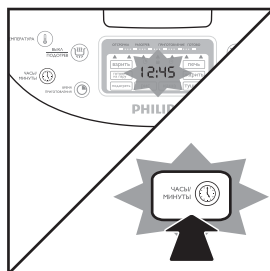
7 Use

First time use

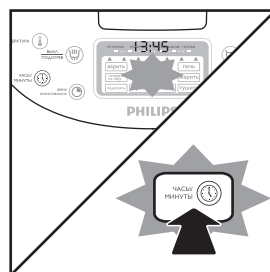
- (1) Remove all accessories from the inner pot.
- (2) Wipe the cooker with soft cloth.
- (3) Use the function of "ГОТОВИТЬ НА ПАРУ" ("STEAM") to remove the odor of the inner pot and inner lid.
 - Add half pot full of water in the inner pot, close the lid and plug in the power supply.
 - Touch "МЕНЮ" ("Function Selection") icon to select "ГОТОВИТЬ НА ПАРУ" ("STEAM"), and touch "СТАРТ" ("Start") icon to begin the task.
 - Once the Product starts beeping, touch ВЫКЛ "ПОДОГРЕВ" ("Keep Warm/Cancel") icon, and disconnect the power supply.
 - Wait until the pot is cooled down and pour out the water.
- (4) Use a sponge and liquid detergent to wash all accessories, rinse thoroughly and dry with soft cloth.

Set the clock

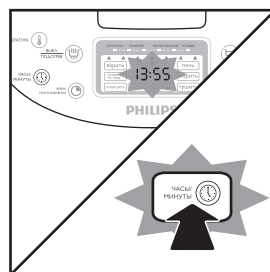
- (1) Touch and hold "ЧАСЫ/МИНУТЫ" ("Hour/Minute Adjustment") key for 3 seconds, and the digits displayed begins to blink. Now you can set the time.



- (2) Touch "ЧАСЫ/МИНУТЫ" ("Hour/Minute Adjustment") key, and you may start setting the hour; each press adds 1 hour.



- (3) After you are finished with hour setting, in a few seconds the setting will switch to minute adjustment automatically. Each touch on the key adds 1 minute.



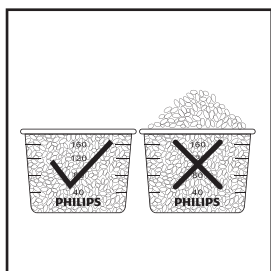
- (4) After the time is set, if there's no action for 3 seconds, the digits in the box will stop blinking, which means the time setting is completed.

8 Functions & Instructions

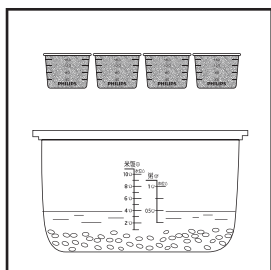
RICE

Preparation before use

- (1) Measure rice with the measuring cup as shown, and wash it in another container with water until clean.

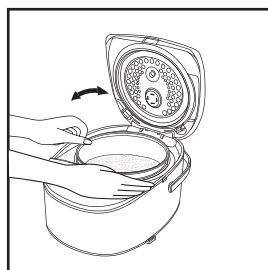


- (2) Place the clean rice into the inner pot, and add water according to the markings on the inner pot.



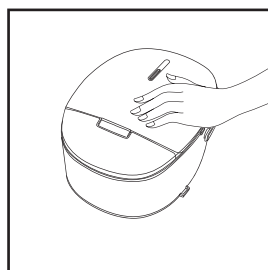
- Select and add water according to the amount of rice to the matching marking. EX. For 4 cups of rice, the water level should be up to where it is marked "4".
- You may adjust the amount of water based on the choice of rice and your preference (harder or softer). (Note: Both rice and water may not exceed the highest marking on the inner pot.)

- (3) Dry the outside of the inner pot with dry cloth, place the pot into the cooker, gently spin the inner pot 2 to 3 times to the arrow-pointing direction, so the bottom of the pot is firmly attached to the heat plate.



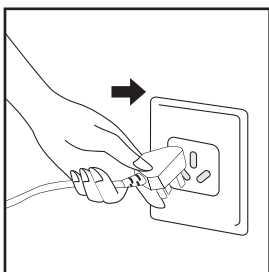
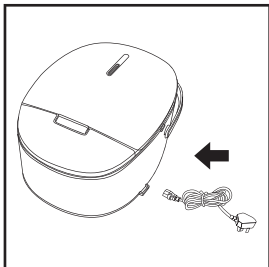
- Please wipe dry both inside and outside of the inner pot. If the outside and bottom of the inner pot is wet, you may hear some noise when cooking and rice, and it may cause the multi-function rice cooker to malfunction.

- (4) Close the lid until you hear a "click" sound, which indicates the lid is fully closed.



- Please do not open the lid or cover the vapor valve with a towel or other object when cooking; it may deform and lid or cause malfunction.

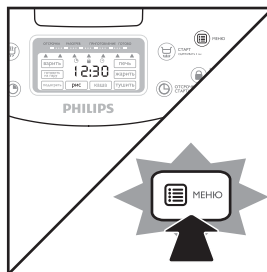
- (5) Power on: Plug in one end of the power cord to the multi-function rice cooker, and the other end to the power outlet. The multi-function rice cooker then goes into stand by mode.



- Please do not connect the cooker to the power supply before the preparation is completed.

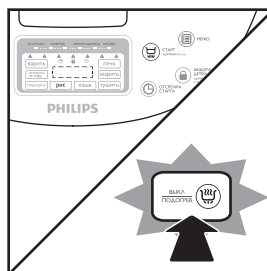
Start to Cook Rice

- (1) Touch "МЕНЮ" ("Function Selection") key, select "РИС" ("Rice") as needed, the characters of "Rice" is framed in the display.

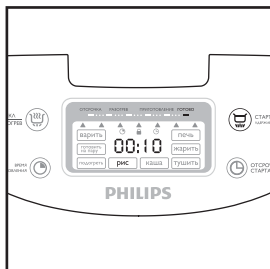


- After confirming the selections of "МЕНЮ" ("Function Selection"), "ОТСРОЧКА СТАРТ" ("Timing Preset") and "ВРЕМЯ ПРИГОТОВЛЕНИЯ" ("Cooking time"), if the user does not take any actions in 15 seconds, the Product will start beeping at the interval of once every 1 second. After beeped for 15 times, the Product goes into standby mode.

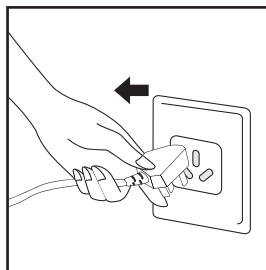
- (2) Touch and hold "СТАРТ" ("Start") key for 3 seconds, the multi-function rice cooker will go into cooking mode automatically.



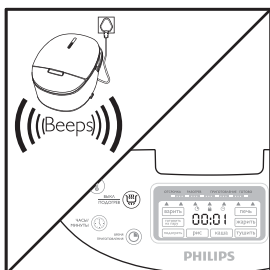
- (3) When simmering the rice, the display starts counting down and shows 10 minutes for simmering.



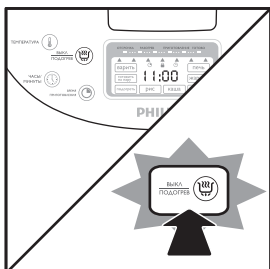
- (7) When you don't need the cooker to keep warm, or if the multi-function rice cooker is not used, please disconnect it from the power supply.



- (4) After the rice is cooked, the Product beeps 4 times continuously and "RICE" ("Rice") box in the display disappears. Now the Product goes into keep warm mode, and the display shows the duration of keeping warm.



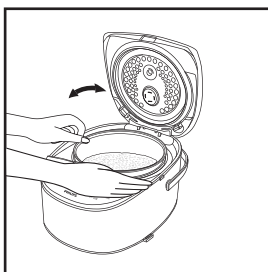
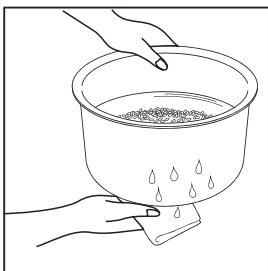
- (5) When the multi-function rice cooker goes into keep warm mode, the indicator of keeping warm lights up. If you need to cancel the function of keeping warm, please touch "ВЫКЛ ПОДГОТОВ" ("Cancel/Keep Warm") key.



Porridge

Preparation

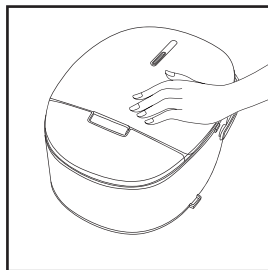
- (1) Put the prepared ingredients into the inner pot, add water according to the marking. Dry the outside of the inner pot with dry cloth, place the pot into the cooker, gently spin the inner pot 2 to 3 times to the arrow-pointing direction, so the bottom of the pot is firmly attached to the heat plate.



When making porridge, please use the included measuring cup to measure the amount of rice. Please refer to the porridge marking on the inner pot for the amount of water and rice.

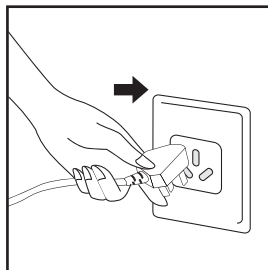
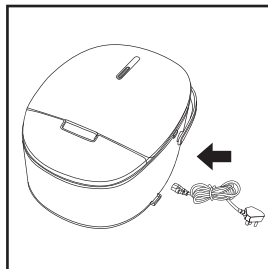
- EX. For 1 cup of rice, the water level for porridge should up to where it is marked "1".
- You may add more or reduce the amount of water according to your preference.

- (2) Close the lid until you hear a "click" sound, which indicates the lid is fully closed.



- Please do not open the lid or cover the vapor valve with a towel or other object when cooking; it may deform and lid or cause malfunction.

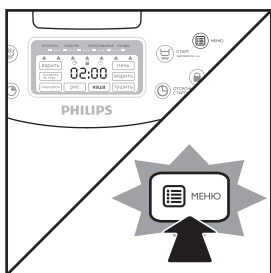
- (3) Power on: Plug in one end of the power cord to the multi-function rice cooker, and the other end to the power outlet. The multi-function rice cooker then goes into stand by mode.



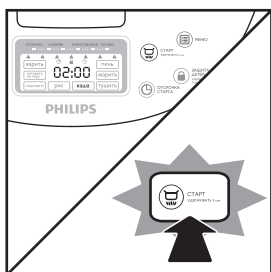
- Please do not connect the cooker to the power supply before the preparation for cooking is completed.

Begins to make porridge

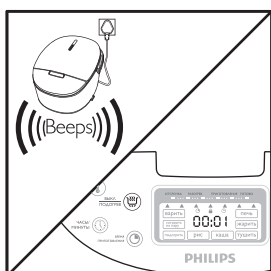
- (1) Touch "Function Selection" key, select "ΚΑΛΛΙΑ" ("Porridge") as needed, the characters of "ΚΑΛΛΙΑ" ("Porridge") is framed in the display, and shows the default cooking time as 2 hours.



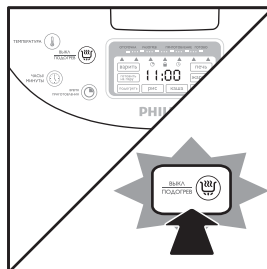
- (2) Touch and hold "CTAPT" ("Start") key for 3 seconds, the multi-function rice cooker will go into "ΚΑΛΛΙΑ" ("Porridge") mode automatically.



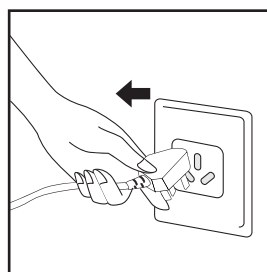
- (3) After the task is completed, the Product beeps 4 times continuously and "ΚΑΛΛΙΑ" ("Porridge") box in the display disappears. Now the Product goes into keep warm mode, and the display shows the duration of keeping warm.



- (4) When the multi-function rice cooker goes into keep warm mode, the indicator of keeping warm lights up. If you need to cancel the function of keeping warm, please touch "ΒΥΙΚΛ ΠΟΔΟΓΡΕΒ" ("Cancel/Keep Warm") key.

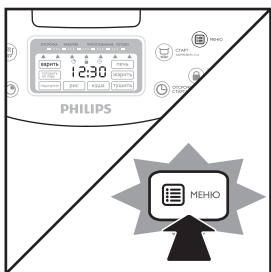


- (5) When you don't need the cooker to keep warm, or if the multi-function rice cooker is not used, please disconnect it from the power supply.

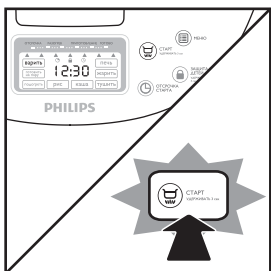


BOIL

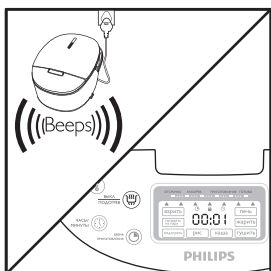
- (1) Touch "МЕНО" ("Function Selection") key, select "ВАРИТЬ" ("Boil") as needed, the characters of "ВАРИТЬ" ("Boil") is framed in the display.



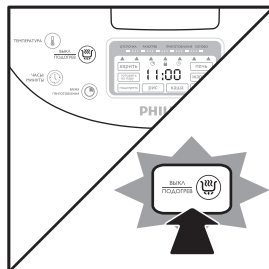
- (2) Touch and hold "СТАРТ" ("Start") key for 3 seconds, the multi-function rice cooker will go into "ВАРИТЬ" ("Boil") mode automatically. Before the water is boiled, the display will show the present time; the cooking time is not counted until the water is boiled.



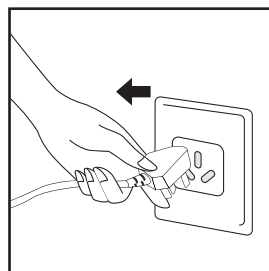
- (3) After the task is completed, the Product beeps 4 times continuously and "ВАРИТЬ" ("Boil") box in the display disappears. Now the Product goes into keep warm mode, and the display shows the duration of keeping warm.



- (4) When the multi-function rice cooker goes into keep warm mode, the indicator of keeping warm lights up. If you need to cancel the function of keeping warm, please touch "ВЫКЛ ПОДГОРЕВ" ("Cancel/Keep Warm") key.



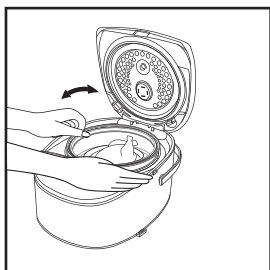
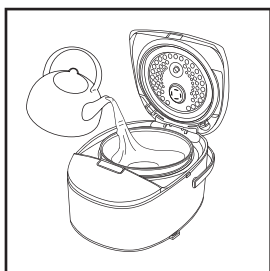
- (5) When you don't need the cooker to keep warm, or if the multi-function rice cooker is not used, please disconnect it from the power supply.



Steam

Preparation

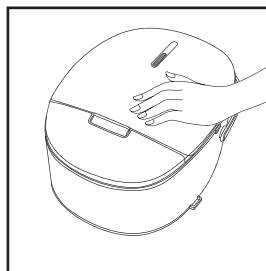
- (1) Pour water into the inner pot as appropriate (you may need to adjust the amount of water as preferred), place the steamer in the cooker, then put in the food ingredients (you may put the food in a plate if needed). Gently spin the inner pot 2 to 3 times to the arrow-pointing direction, so the bottom of the pot is firmly attached to the heat plate.



- If you need to use the steamer while cooking the rice, please see the chart below for the maximum amount of rice allowed.

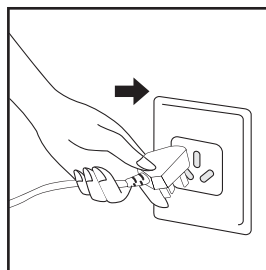
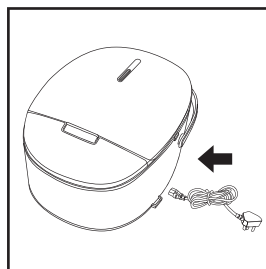
Model	Rated amount for rice (Unit: measuring cup)
HD3075	4 cups
HD3077	5 cups

- (2) Close the lid until you hear a "click" sound, which indicates the lid is fully closed.



- Please do not open the lid or cover the vapor valve with a towel or other object when cooking; it may deform and lid or cause malfunction.

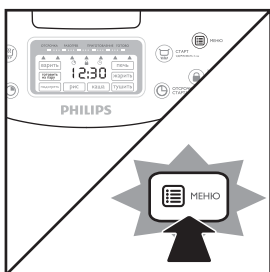
- (3) Power on: Plug in one end of the power cord to the multi-function rice cooker, and the other end to the power outlet. The multi-function rice cooker then goes into stand by mode.



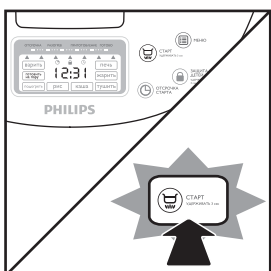
- Please do not connect the cooker to the power supply before the preparation for cooking is completed.

Start Steaming

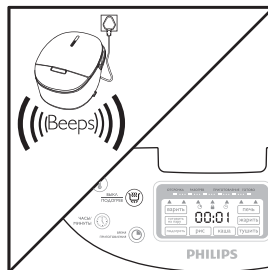
- (1) Touch "МЕНЮ" ("Function Selection") key, select "ГОТОВИТЬ НА ПАРУ" ("Steam") as needed, the characters of "ГОТОВИТЬ НА ПАРУ" ("Steam") is framed in the display.



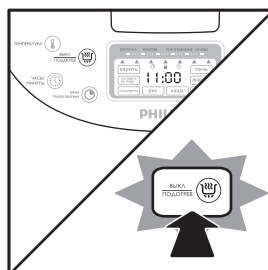
- (2) Touch and hold "СТАРТ" ("Start") key for 3 seconds, the multi-function rice cooker will go into "ГОТОВИТЬ НА ПАРУ" ("Steam") mode automatically. Before the water is boiled, the display will show the present time; the cooking time is not counted until the water is boiled.



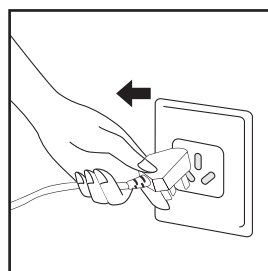
- (3) After the task is completed, the Product beeps 4 times continuously and "ГОТОВИТЬ НА ПАРУ" ("Steam") box in the display disappears. Now the Product goes into keep warm mode, and the display shows the duration of keeping warm.



- (4) When the multi-function rice cooker goes into keep warm mode, the indicator of keeping warm lights up. If you need to cancel the function of keeping warm, please touch "ВЫКЛ ПОДОГРЕВ" ("Cancel/Keep Warm") key.

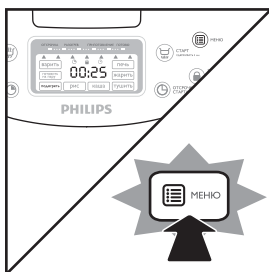


- (5) When you don't need the cooker to keep warm, or if the multi-function rice cooker is not used, please disconnect it from the power supply.

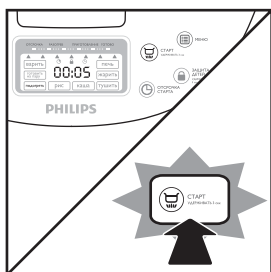


Reheat

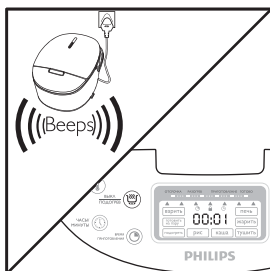
- (1) Touch "МЕНЮ" ("Function Selection") key, select "ΠΟΔΟΓΡΕΤЬ" ("Reheat") as needed, the characters of "ΠΟΔΟΓΡΕΤЬ" ("Reheat") is framed in the display, and shows the default cooking time as 25 minutes.



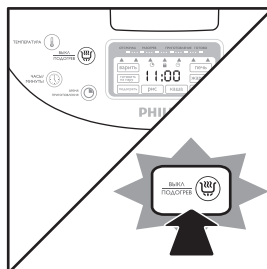
- (2) Touch and hold "СТАРТ" ("Start") key for 3 seconds, the multi-function rice cooker will go into "ΠΟΔΟΓΡΕΤЬ" ("Reheat") mode automatically.



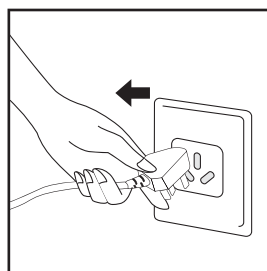
- (3) After the task is completed, the Product beeps 4 times continuously and "ΠΟΔΟΓΡΕΤЬ" ("Reheat") box in the display disappears. Now the Product goes into keep warm mode, and the display shows the duration of keeping warm.



- (4) When the multi-function rice cooker goes into keep warm mode, the indicator of keeping warm lights up. If you need to cancel the function of keeping warm, please touch "ΒЫКЛ ΠΟΔΟΓРЕВ" ("Cancel/Keep Warm") key.

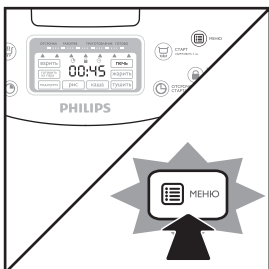


- (5) When you don't need the cooker to keep warm, or if the multi-function rice cooker is not used, please disconnect it from the power supply.

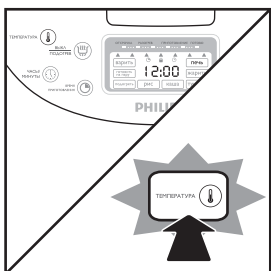


Oven

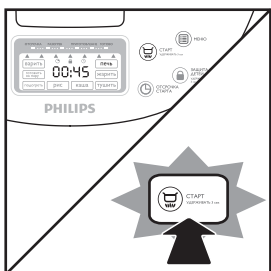
- (1) Touch "MEHIO" ("Function Selection") key, select "Oven" as needed, the characters of "Oven" is framed in the display, and shows the default cooking time as 45 minutes. The available cooking time is from 20 minutes to 2 hours.



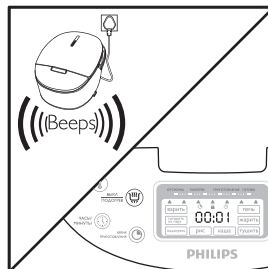
- (2) After confirmation, touch "ТЕМПЕРАТУРА" ("Temperature Adjustment") key to select the desired temperature: 40°C, 60°C, 80°C, 100°C, 120°C, 150°C, 180°C, and loop setting.



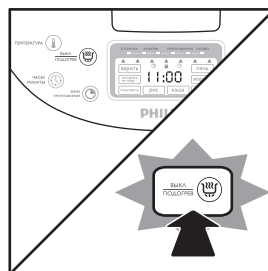
- (3) After the temperature is adjusted, press and hold "СТАРТ" ("Start") key for 3 seconds to start "Oven" mode.



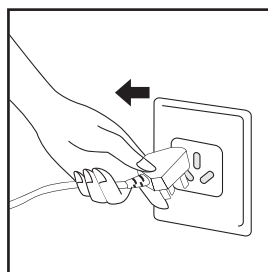
- (5) After the task is completed, the Product beeps 4 times continuously and "Oven" box in the display disappears. Now the Product goes into keep warm mode, and the display shows the duration of keeping warm.



- (6) When the multi-function rice cooker goes into keep warm mode, the indicator of keeping warm lights up. If you need to cancel the function of keeping warm, please touch "ВЫКЛ ПОДОГРЕВ" ("Cancel/Keep Warm") key.



- (7) When you don't need the cooker to keep warm, or if the multi-function rice cooker is not used, please disconnect it from the power supply.

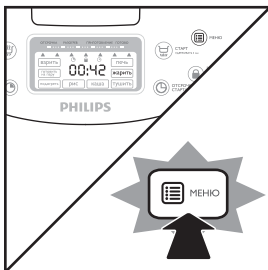


Tips

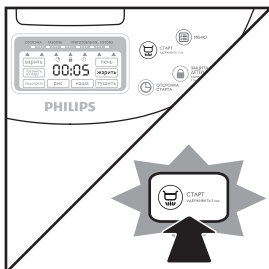
- This function must be operated with the lid opened.
- This function may not be used for DEEP FRY, and the amount of oil may not exceed marking "2".

Pan fry

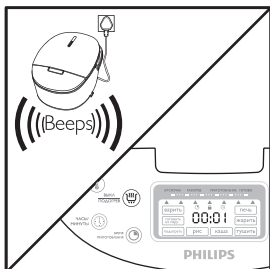
- (1) Touch "MEHIO" ("Function Selection") key, select "Pan fry" as needed, the characters of "Pan fry" is framed in the display, and shows the default cooking time as 42 minutes. The available cooking time is from 5 to 59 minutes.



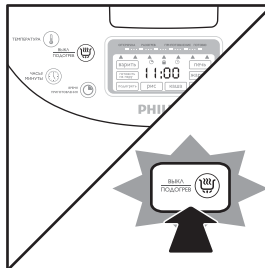
- (2) After the function is selected, press and hold "CTAPT" ("Start") key for 3 seconds to start "Pan fry" mode.



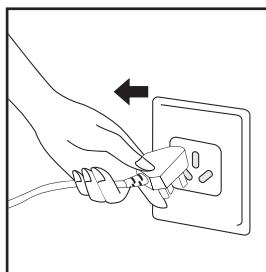
- (3) After the task is completed, the Product beeps 4 times continuously and "Pan fry" box in the display disappears. Now the Product goes into keep warm mode, and the display shows the duration of keeping warm.



- (4) When the rice cooker goes into keep warm mode, the indicator of keeping warm lights up. If you need to cancel the function of keeping warm, please touch "BЫKЛ ПОДГОРЕВ" ("Cancel/Keep Warm") key.



- (5) When you don't need the cooker to keep warm, or if the multi-function rice cooker is not used, please disconnect it from the power supply.

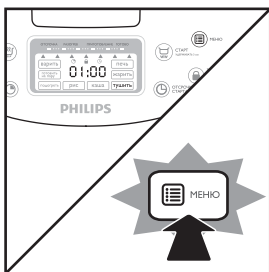


Note

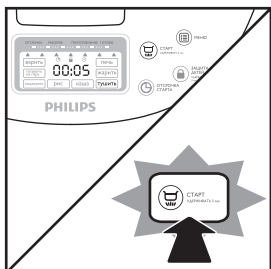
- This function must be operated with the lid open.
- This function may not be used for DEEP FRY, and the amount of oil may not exceed marking "2".

Stew

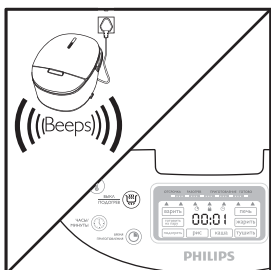
- (1) Touch "МЕНЮ" ("Function Selection") key, select "ТУШИТЬ" ("Stew") as needed, the characters of "ТУШИТЬ" ("Stew") is framed in the display, and shows the default cooking time as 1 hour. The available cooking time is from 20 minutes to 10 hours.



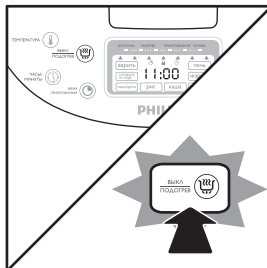
- (2) Touch and hold "СТАРТ" ("Start") key for 3 seconds, the multi-function rice cooker will go into "ТУШИТЬ" ("Stew") mode automatically.



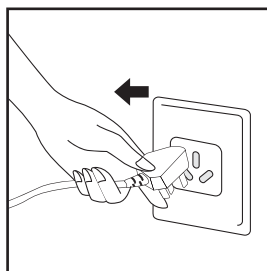
- (3) After the task is completed, the Product beeps 4 times continuously and "ТУШИТЬ" ("Stew") box in the display disappears. Now the Product goes into keep warm mode, and the display shows the duration of keeping warm.



- (4) When the multi-function rice cooker goes into keep warm mode, the indicator of keeping warm lights up. If you need to cancel the function of keeping warm, please touch "ВЫКЛ ПОДОГРЕВ" ("Cancel/Keep Warm") key.



- (5) When you don't need the cooker to keep warm, or if the multi-function rice cooker is not used, please disconnect it from the power supply.



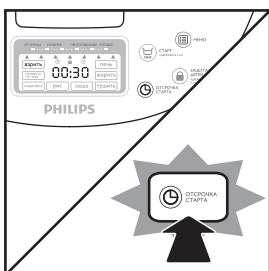
Timing Preset

- (1) After the corresponding function keys are selected, press "ОТСПОЧКА СТАРТ" ("Timing Preset") key to preset the time. Please press "ОТСПОЧКА СТАРТ" ("Timing Preset") key according to the blinking prompts to adjust the time. You may adjust the preset time for up to 24 hours (10 minutes to 24 hours); every press on the ЧАСЫ (HOUR) key adds 1 hour; every press on the МИНУТЫ (MINUTE) key adds 10 minutes. Timing preset is not available for "Barbecue" and "Pan fry".

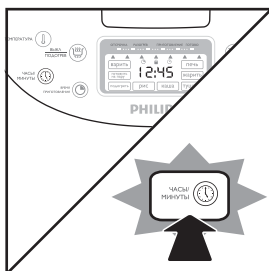


Tips

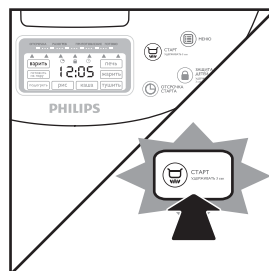
- E.g. Task states



- (2) Touch and hold "ОТСПОЧКА СТАРТ" ("Time Adjustment") key for 3 seconds, and the digits displayed begins to blink. Now you can set the preset time.



- (2) After the timing preset, touch "СТАРТ" ("Start") key for 3 seconds, the Product will go into "ВАРИТЬ" ("Boil") mode automatically after the preset time.



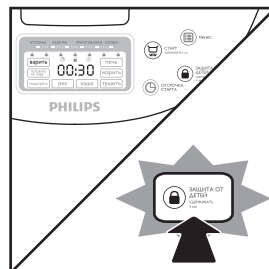
Child-Lock

- (1) Touch and hold "ЗАЩИТА ОТ ДЕТЕЙ" ("Child-Lock") key for 3 seconds under standby, task or keep warm mode to switch to child-lock mode. Now the icon of "ЗАЩИТА ОТ ДЕТЕЙ" ("Child-Lock") in the display will light up; except for "ВЫКЛ ПОДГОРЕВ" ("Cancel/Keep Warm") is still available for operation, all the other keys may not be used.

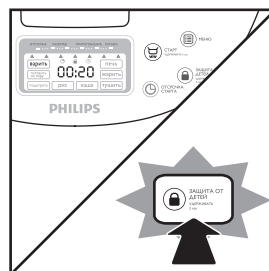


Tips

- E.g. Task states

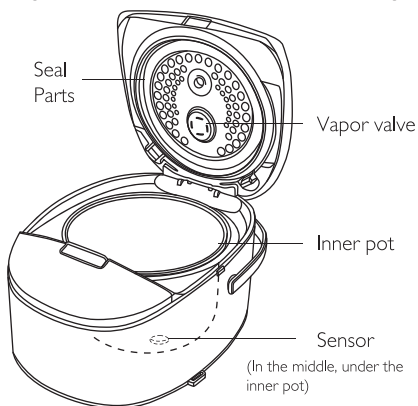


- (2) To unlock the Product, touch and hold "ЗАЩИТА ОТ ДЕТЕЙ" ("Child-Lock") key for 3 seconds. The icon of "ЗАЩИТА ОТ ДЕТЕЙ" ("Child-Lock") in display disappears, and the other keys are now available to use.

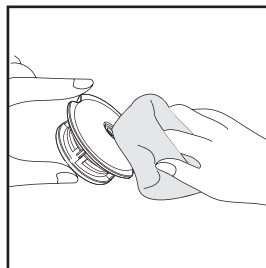
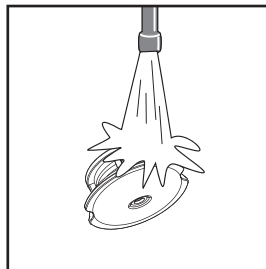


9 Maintenance

Please ensure to disconnect from the power supply before performing maintenance, and wait until the heat plate is cooled down before cleaning. Do not use thinner, gasoline, cleanser, hard brush, etc. for cleaning.

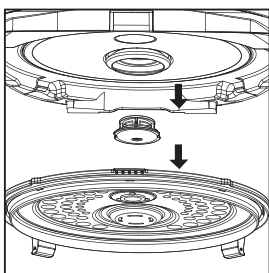


(2) Rinse it with clean water, and wipe it with dried cloth.

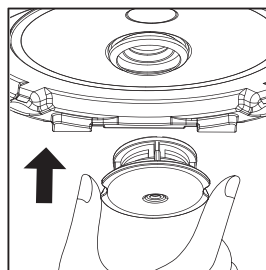


Vapor Valve Cleaning Tips

(1) Remove the vapor valve from the lid.



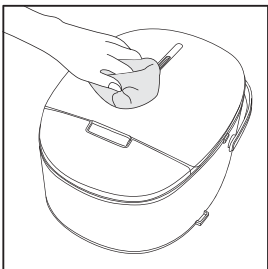
(3) When installing, please match the arrows on the base and lid of the valve, and gently turn it to place.



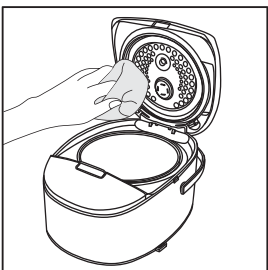
- If there are objects stuck in the valve, please clean it immediately or it may affect the cooking quality.

Tips of Cover (Seal) Cleaning

- (1) Please use dish washing detergent to wipe clean the surface of the lid.

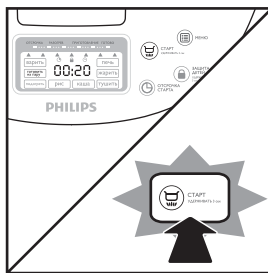
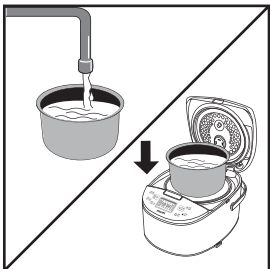


- (2) If you do not clean the inner side of the lid on time, it will be stained and it will then be difficult to clean. Therefore, please ensure to wipe it clean every time after used.

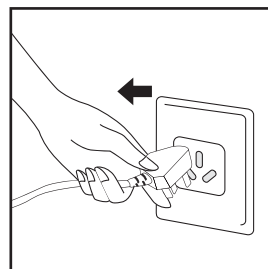
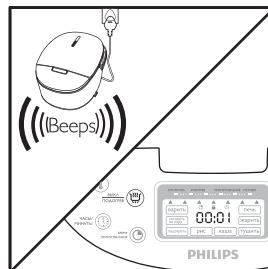


Tips of Inner Pot Cleaning

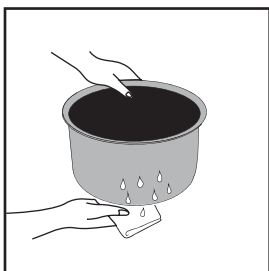
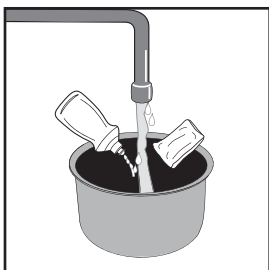
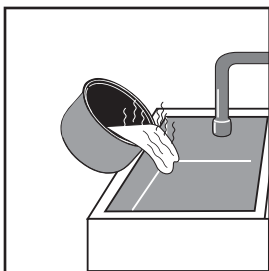
- (1) Pour water into the inner pot, and place the pot in the multi-function rice cooker. Touch "МЕНЮ" ("Function Selection") key and select "ГОТОВИТЬ НА ПАРУ" ("Steam"), then touch and hold "Start" key for 3 seconds to begin the task.



- (2) After the task of "ГОТОВИТЬ НА ПАРУ" ("Steam") is completed, the Product makes the beeping sound and goes into keep warm mode. Touch "БЫКЛ ПОДГОРЕВ" ("Cancel/Keep Warm") key to cancel the function of keeping warm, and unplug the Product.



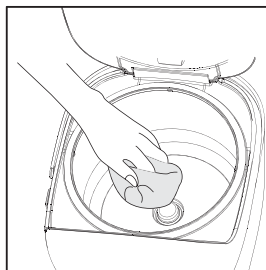
- (3) After the cooker is cooled down, pour out the water in the inner pot, and use dish washing detergent and sponge to wipe the inner pot gently, then rinse it off with clean water; Please wipe dry the outside of the inner pot. Do not use brushes with hard bristles or hard objects for cleaning, as this may damage the non-sticking coating.



- The coating surface may discolor or dapple after being used for a long time, but this has no effect on your health.

Tips of Sensor and Heat Plate Cleaning

- When there are somethings sticking to the bottom sensor and/or the heat plate, please use fine sandpaper (No. 600) or soft cloth to gently wipe them.

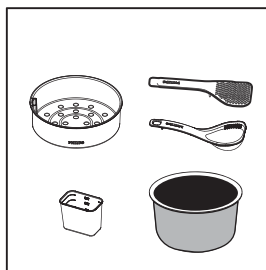


- If there is something, such as rice, sticking to the Product, please wipe it clean with wet cloth. Please use fine picks to remove the rice and object in the gaps.
- The surface of the heat plate and protection frame may discolor or dapple, this has no effect on your health.

Tips of Accessory Cleaning

Please use dish washing detergent, sponge and water for cleaning.

- Spoon, rice spoon, inner pot, vapor valve, steamer and measuring cup



- After soaked with hot water or water, clean them with sponge.

10 Analysis of malfunctions and solutions

If there are problems when using the rice cooker, please check the following before requesting for services:

If the problems remain unsolved, please contact our designated special maintenance department.

Please check	When the following occurred	RICE				Rice crust is overly brown	Rice is being kept warm			Switch operation is not responding	Following noise sounded when using
		Too hard	Not cooked	Too soft	Rice soup overflow		Emit odor	Discolor	Arid		
★ The amount of rice and/or water is not correct		✓	✓	✓	✓	✓				◆ The plug is unplugged or not properly connected.	◆ There is popping sound when cooking, it is the bursting sound of water being boiled from the bottom of the pot (outside).
★ The rice is not properly cleaned					✓	✓	✓				
★ It is not flat on the bottom of the inner pot		✓	✓			✓					
★ Foreign object(s) is (are) stuck to the outside of the inner pot or pot sensor		✓	✓	✓	✓	✓	✓				
★ Vapor valve is not properly placed		✓	✓		✓		✓	✓	✓		
★ Add oil to cook rice		✓	✓				✓				
★ The rice is not stirred after cooked		✓		✓							
★ Insulation is over 5 hours or the amount of rice for keeping warm is too little								✓	✓		
★ The rice spoon is in the pot when keeping warm							✓				
★ Insulating cold rice							✓				
★ The lid is not properly closed or the inner pot is not properly cleaned						✓	✓				
★ The plug is unplugged or the switch is turned off when cooking			✓				✓				
1. The above are the troubleshooting for common failures. 2. Please do not disassemble for repairing on your own to avoid potential risk of danger. If the problems remain unsolved, please contact our designated special maintenance department.											

Serial Number	Malfunction		Causes	Troubleshooting
1	the indicator does not light up	Heat plate does not heat up	1. Power is not connected to the circuit board 2. Power supply circuit board failure 3. Circuit board is disconnected 4. Main circuit board failure	1. Check if the switches, plugs and sockets, fuses and mains lead are intact and properly connected 2. Sent to the designated repair network for maintenance 3. Sent to the designated repair network for maintenance 4. Sent to the designated repair network for maintenance
		Heat plate heats up	Main circuit board failure	Sent to the designated repair network for maintenance
2	the indicator lights up	Heat plate does not heat up	1. Bottom thermistor failure 2. Heat plate components burned 3. Circuit board is partially disconnected 4. Power supply circuit board failure	Sent to the designated repair network for maintenance
3	Display screen shows E1		1. Bottom sensor short circuit 2. High temperature alarm	1. Sent to the designated repair network for maintenance 2. Restore to normal temperature and reconnect
4	Display screen shows E2		1. Bottom sensor is disconnected 2. Low temperature alarm	1. Sent to the designated repair network for maintenance 2. Restore to normal temperature and reconnect
5	Display screen shows E3		1. Lid sensor short circuit 2. High temperature alarm	1. Sent to the designated repair network for maintenance 2. Restore to normal temperature and reconnect
6	Display screen shows E4		1. Lid thermistor short circuit 2. Low temperature alarm	1. Sent to the designated repair network for maintenance 2. Restore to normal temperature and reconnect
7	Rice is not cooked or it takes too long to cook		1. Heat plate is deformed 2. Inner pot is tilted, one side is dangling 3. Foreign object(s) in between inner pot and heat plate 4. Inner pot is deformed 5. Main circuit board failure 6. Main thermostat exception	1. Sent to the designated repair network for replacement 2. Turn the inner pot gently to restore it to normal state 3. Clear away the foreign object(s) 4. Sent to the designated repair network to replace the inner pot 5. Sent to the designated repair network for maintenance 6. Sent to the designated repair network for maintenance
8	Rice is burned, no auto keep warm or not keeping warm properly		1. Main circuit board failure 2. Bottom thermistor exception	Sent to the designated repair network for maintenance
9	Porridge severely overflow		1. Main circuit board failure 2. Lid thermistor exception	Sent to the designated repair network for maintenance
10	Rice cooking and/or porridge making does not boil after a long time		1. Main circuit board failure 2. Lid thermistor exception	Sent to the designated repair network for maintenance

