



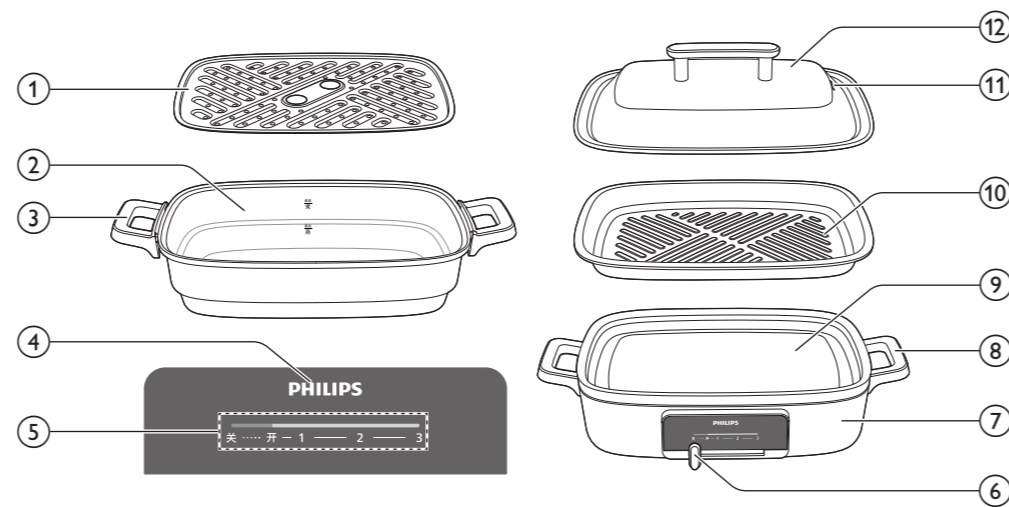
EN User manual

ZH-CN 使用手册

使用产品前请仔细阅读本使用说明书
保留备用

1 Product Overview

产品概览



- 1 Steaming rack
- 2 Cooking pan
- 3 Cooking pan handle
- 4 Power indication
- 5 Light bar
- 6 Temperature control lever
- 7 Main unit
- 8 Main unit handle
- 9 Heating plate
- 10 Grill pan
- 11 Steam outlet
- 12 Pan lid

- 1 蒸屉
- 2 深锅
- 3 深锅手柄
- 4 电源指示灯
- 5 档位指示灯
- 6 档位调节开关
- 7 机身
- 8 机身手柄
- 9 加热盘
- 10 烤盘
- 11 锅盖蒸汽口
- 12 锅盖

2 Before first use

首次使用前

- Remove all packing materials.
- Thoroughly clean the appliance and its accessories before first use.

- 拆掉所有包装材料。
- 首次使用前，请彻底清洁产品及其配件。

3 Temperature setting

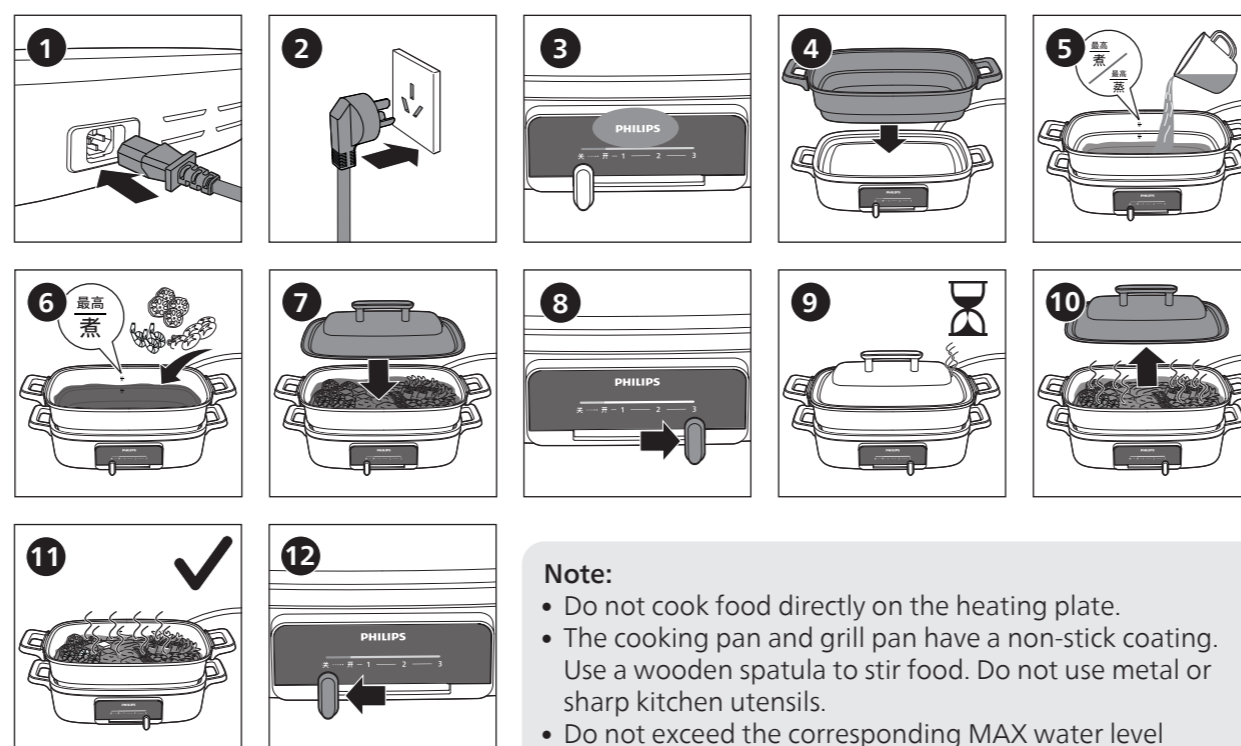
温度设置

Setting	Temperature	Suggested use
1	60-120 °C	Keeping food warm
2	130-190 °C	Boiling (with cooking pan) Grilling fish (with grill pan)
3	195-235 °C	Roasting meat (with grill pan) Hot pot (with cooking pan) Steaming (with cooking pan and steaming rack)

设置	温度	建议使用
1	60-120 °C	食物保温
2	130-190 °C	煮食（使用深锅），烤鱼（使用烤盘）
3	195-235 °C	烤肉（使用烤盘），火锅（使用深锅） 蒸（搭配使用深锅和蒸屉）

4 Using the appliance

使用本产品



- To pause the cooking process, slide the temperature control lever to the "OFF" position. To resume cooking, slide the control lever to the heating position.

Note:

- Do not cook food directly on the heating plate.
- The cooking pan and grill pan have a non-stick coating. Use a wooden spatula to stir food. Do not use metal or sharp kitchen utensils.
- Do not exceed the corresponding MAX water level indication when using the cooking pan to cook or steam food.
- Do not leave leftovers in the cooking pan.
- To steam food with the steaming rack, make sure to add water to the cooking pan. Do not let the cooking pan boil dry.

Preheating:

- You can preheat the appliance for optimal cooking result.
- Make sure the temperature control level is in the "OFF" position before plugging in the appliance.
 - Always place the appliance on a stable, horizontal, level and heat-resistant surface.
 - Make sure that there is no foreign object or any liquid on the heating plate before you put the cooking pan or grill pan on it.
 - During preheating, the grill pan may become very hot. Handle the hot parts with oven-safe gloves.
 - This appliance may produce some mild smoke when you use it for the first time. This is normal.

预热:

- 为了达到最佳烹饪效果，烹饪前可以对机器进行预热。
- 产品接通电源前请确保档位调节开关处于“关”的位置。
 - 始终将本产品置于稳固、水平、平整且隔热的表面上。
 - 将深锅或烤盘放在加热盘上之前，确保加热盘上没有异物或液体。
 - 在预热期间，烤盘会变得非常烫。用隔热手套握持发烫区域。
 - 第一次使用本产品时可能会出现一些轻微烟雾。这是正常现象。

注意:

- 不要直接在加热盘上烹饪食品。
- 深锅和烤盘表面有不粘涂层。使用木制刮铲搅拌食物。不要使用金属、尖锐的厨房用具。
- 使用深锅进行煮食或者蒸食，请勿超过对应的最大水位线。
- 不要将残留食物储存在深锅中。
- 使用蒸屉蒸食物时，务必向深锅中加水。避免深锅干烧。
- 用户在使用时如有中途暂停使用的情况，请把档位调节开关移至“关”的位置，再次启动时重新将档位调节开关移动至加热状态。

出版日期: 2022-01-07

© 2022 Philips Domestic Appliances Holding B.V.
All rights reserved
3000.082.5058.2



PHILIPS

产品 : 飞利浦多功能料理锅
型号 : HD2250
额定电压 : 220V~
额定频率 : 50Hz
额定输入功率 : 1400 W
生产日期 : 请见产品本体
产地 : 中国广东佛山

飞利浦家电(中国)投资有限公司
上海市静安区灵石路728弄20号201室
全国顾客服务热线: 4008 800 008

本产品根据国标GB4706.1-2005,
GB4706.14-2008, GB4706.19-2008 制造

5 Using the accessories

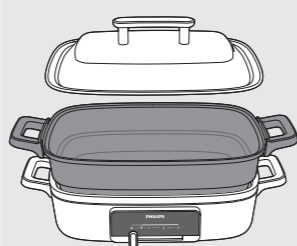
附件使用

This appliance comes with a cooking pan, a steaming rack and a grill pan. You can use different accessories for various cooking results. Do not exceed the corresponding MAX water level indication when using the cooking pan to cook or steam food.

本产品随附深锅、蒸屉和烤盘。
您可搭配使用不同的配件来获得多样烹饪效果。
使用深锅进行煮食或者蒸食，请勿超过对应的最大水位线。

Cooking pan only
Use the cooking pan for hot pot, stew, slow cook, etc.

仅使用深锅
使用深锅可以涮火锅、炖煮、慢煮食材等。



Steaming rack + Cooking pan
Add water in the cooking pan, and place the steaming rack in the cooking pan.

搭配深锅使用蒸屉
向深锅中加水，然后将蒸屉放置在深锅内。



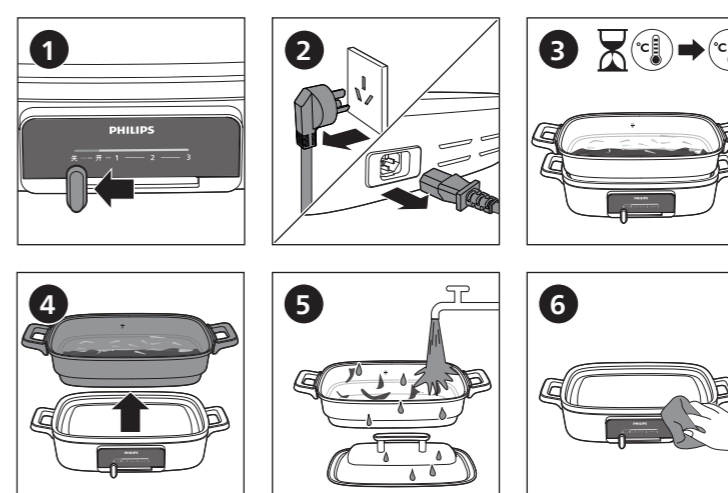
Grill pan only
Use the grill pan for steak, pork, fish fillet, etc. It is not necessary to cover the grill pan with the lid. Only use it for a short period of time to avoid splashing.

仅使用烤盘
使用烤盘可以烤制牛排、猪排、鱼排等食材。烹饪时无需将烤盘盖住，仅在防止飞溅时短时间使用。



6 Cleaning

清洁



注意:

- 每次使用后都应彻底清洁产品。
- 清洁前请确保已关闭产品并已切断其电源。
- 清洁前，让深锅、锅盖、烤盘和主机完全冷却。
- 切勿将产品机身浸入水中或任何其它液体中。
- 深锅和烤盘采用不粘涂层。不要使用金属厨具或研磨性清洁材料，因为这样可能损坏不粘涂层。
- 如果食物残渣粘在深锅或烤盘上，请将其浸泡在热水和清洁剂中几分钟。
- 使用软布清洁产品外部。

Note:

- Thoroughly clean the appliance after every use.
- Before cleaning, make sure the appliance is switched off and unplugged.
- Let the cooking pan, lid, grill pan, and main unit cool down completely before cleaning.
- Never immerse the main unit in water or any other liquid.
- The cooking pan and grill pan have a non-stick coating. Do not use metal kitchen utensils or abrasive cleaning materials as this may damage the non-stick coating.
- If food residue is stuck to the cooking pan or grill pan, soak them in hot water and dishwashing liquid for a few minutes.
- Clean the outside of the appliance with a soft clean cloth.

ENGLISH

Introduction

Congratulations on your purchase and welcome to Philips! To fully benefit from the support that Philips offers, register your product at **www.philips.com/welcome**.

Important

Read this important information carefully before you use the appliance and save it for future reference.

Danger

- Do not immerse the main unit in water or any other liquid.

Warning

- Check if the voltage indicated on the bottom of the appliance corresponds to the local mains voltage before you connect the appliance.
- Only use the appliance for its intended purpose as described in this user manual.
- Do not use the appliance if the plug, the mains cord or the appliance itself is damaged.
- If the mains cord is damaged, you must have it replaced by Philips, a service centre authorised by Philips or similarly qualified persons in order to avoid a hazard.
- Only connect the appliance to an earthed wall socket.
- Keep the mains cord away from hot surfaces.
- Do not let the mains cord hang over the edge of the table or worktop on which the appliance stands.
- This appliance can be used by children aged from 8 years and above and persons with reduced physical, sensory or mental capabilities or lack of experience and knowledge if they have been given supervision or instruction concerning use of the appliance in a safe way and understand the hazards involved. Children shall not play with the appliance. Cleaning and user maintenance shall not be made by children unless they are older than 8 years and supervised.
- Keep the appliance and its cord out of reach of children less than 8 years.
- Never let the appliance operate unattended.
- This appliance is not intended to be operated by means of an external timer or a separate remote-control system.
- Never leave a spatula or tongs on the cooking pan or grill pan when the pan is hot.

Caution

- Do not place the appliance on surfaces that may be affected by heat.
- Do not block any ventilation hole of the appliance to avoid overheating of the appliance.
- Do not place the appliance on or near a hot gas or electric burner, or on a heated oven.
- Put the appliance on a flat, stable surface with sufficient free space around it.
- The accessible surfaces may become hot when the appliance is operating.
- Do not touch hot surfaces. Use hot pads or oven mitts when handling hot surfaces.
- Always make sure the temperature control lever is in the "OFF" position when the appliance is not in use. If the appliance is plugged in and the temperature control lever is not in the "OFF" position, take extra caution when handling the appliance as the heating plate may have heated up.
- Always switch off and unplug the appliance after use and before cleaning.
- Always clean the appliance after use.
- Let the appliance cool down completely before you remove the cooking pan or grill pan, clean the appliance and put it away.
- Never touch the cooking pan or grill pan with sharp or abrasive items, as this damages the non-stick coating.
- This appliance is only intended for indoor use. Do not use it outdoors.
- This appliance is intended for normal household use only. It is not intended for use in environments such as staff kitchens of shops, offices, farms or other work environments. Nor is it intended to be used by clients in hotels, motels, bed and breakfasts and other residential environments.
- If the appliance is used improperly or for professional or semiprofessional purposes or if it is not used according to the instructions in the user manual, the guarantee becomes invalid and Philips refuses any liability for damage caused.
- Overheated fat or oil, fatty residues and rest of meat on the pan could ignite and start burning. Never leave the appliance unattended. In case of oil and fat-ignition never extinguish with water. Switch off the device and damp down a fire carefully with a fire blanket or a damp dish towel.

Electromagnetic fields (EMF)

This Philips appliance complies with all applicable standards and regulations regarding electromagnetic fields.

Recycling

- Do not throw away the product with the normal household waste at the end of its life, but hand it in at an official collection point for recycling. By doing this, you help to preserve the environment.
- Follow your country’s rules for the separate collection of electrical and electronic products. Correct disposal helps prevent negative consequences for the environment and human health.

Guarantee and support

If you need information or support, please visit **www.philips.com/support** or read the separate guarantee leaflet.

Troubleshooting

This chapter summarizes the most common problems you could encounter with the appliance. If you are unable to solve the problem with the information below, visit **www.philips.com/support** for a list of frequently asked questions or contact the Consumer Care Center in your country.

Problem	Possible cause	Solution
The cooking pan is not heated even though I have switched the appliance on.	The power cord is not connected securely to the appliance.	Make sure the power cord is connected securely to the appliance.
	The cooking pan is not placed properly on the appliance.	Place the cooking pan properly on the heating plate. Make sure there is no object between the heating plate and cooking pan.
There is smell of burnt food during use.	Food on the cooking pan is overcooked and burnt.	Switch off the appliance. Let the cooking pan cool down, then gently remove the burnt food with a wooden or plastic spatula. Wash the cooking pan.
		Use a lower heat level to cook the food. Do not overcook food.
	Dirt or food is left under the bottom of the cooking pan and is burnt by the heating plate.	Switch off the appliance. Let appliance cool down. Wipe the heating plate clean and the underside of the cooking pan.
		Make sure there is no liquid or food between the heating plate and cooking pan before cooking.
Smoke comes out of the grill pan during use	Residual grease on the product may cause extra smoke.	Remove excess grease from the grill pan with a soft cloth or paper kitchen towel each time you use it. After each use, clean the appliance and all parts thoroughly.
	Fatty ingredients are cooked on the grill pan.	If you grill fatty ingredients like bacon or pork belly, you may notice some smoke coming off the food. Some of the fat will splash onto the sides of the grill pan and burn. Similarly, the oil you use to marinate the food may burn and cause some smoke. To minimize smoke production, use no or only a little oil.
	You are cooking several batches one after another but you have not cleaned the grill pan after each batch.	Excess oil and food juices or food residues that remain on the grill pan will start burning. Make sure you wipe the grill pan with paper kitchen towels after each batch. Note: The grill pan is hot during and some time after use. Use oven mitts to handle it.

简体中文

产品简介

欢迎购买并使用飞利浦产品！为了能充分享受飞利浦提供的支持，请在www.philips.com/welcome 上注册您的产品。

重要信息

使用产品之前，请仔细阅读本重要信息，并妥善保管以供日后参考。

危险

- 请勿将产品机身浸入水中或任何其他液体中。

警告

- 在将产品接通电源以前，首先确认产品底部所标示的电压是否与当地的电压相符。
- 只能将产品用于本用户手册中所述的原定用途。
- 如果插头、电源线或产品本身受损，请勿使用本产品。
- 如果电源线损坏，为避免危险，必须由飞利浦、飞利浦授权的服务中心或类似的专职人员来更换。
- 产品只能使用带接地线的插座。
- 不要让电源线接触到高温的表面。
- 不要将电源线悬挂在放置产品的桌子或工作台的边缘上。
- 本产品适合由 8 岁或以上年龄的儿童以及肢体不健全、感觉或精神上有障碍或缺乏相关经验和知识的人士使用，但前提是有人对他们使用本产品进行监督或指导，以确保他们安全使用，并且让他们明白相关的危害。不得让儿童玩耍本产品。不要让儿童进行清洁和保养，除非儿童年龄已超过 8 岁且在有人监督的情况下。
- 应将产品及其线缆置于 8 周岁以下儿童触及不到的地方。
- 切勿在无人看管的情况下使用本产品。
- 本产品不能利用外部定时器或独立的遥控器系统操作。
- 切勿将刮铲或夹钳留在高温深锅或烤盘上。

警告

- 请勿将产品置于可能会受到高温影响的表面。
- 请勿阻塞产品的任何通风孔，以免产品过热。
- 请勿将产品置于加热中的燃气炉或电炉上方或附近，也不要放置在发热炉具上。
- 将产品放在平整、稳定的表面，并使周围留有足够的空间。
- 器具工作期间，加热区域及周围表面温度很高。
- 请勿触摸高温表面，使用隔热垫或防烫手套进行处理。
- 当不使用产品时，确保档位调节开关始终处于“关”的位置。如果产品已通电，且档位调节开关没有处于“关”的位置，加热盘可能已经加热，操作产品时请格外小心。
- 使用后和清洁前，请务必关闭产品电源并拔下电源插头。
- 每次使用后应清洁产品。
- 让产品完全冷却，然后再取下深锅或烤盘，清洁产品并妥善存放。
- 切勿用尖锐或粗糙的物品接触深锅或烤盘，因为这样会损坏其不粘涂层。
- 本产品仅限室内使用。请勿在室外使用。
- 本产品仅限于普通家用。不得用于商店、办公场所、农场或其他工作环境的员工食堂。也不得由酒店、汽车旅馆、提供住宿和早餐的场所及其他住宿环境中的客人使用。
- 如果本产品使用不当，或用于专业或半专业用途，或未根据本用户手册中的说明使用，则保修将失效，飞利浦对此造成的损坏概不负责。
- 过热的脂肪或油、脂肪残留物和锅上的残余肉可能会点燃并开始燃烧。切勿让产品处于无人看管状态。在油和油脂引发燃烧的情况下，切勿用水灭火。关闭设备并小心地用灭火毯或湿洗碗巾灭火。

电磁场 (EMF)

本飞利浦产品符合所有有关电磁场的适用标准和法规。

回收

- 弃置产品时，请不要将它与一般生活垃圾一同丢弃，应将其交给官方指定的回收中心。这样做有利于环保。
- 请遵循您在国家/地区的电器及电子产品分类回收规定。正确弃置本产品有助于避免对环境 and 人类健康造成负面影响。

保修和支持

如果您需要信息或支持，请访问 **www.philips.com/support** 或阅读单独的保修卡。

故障排除

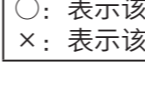
本章归纳了您在使用本产品时常常遇到的问题。如果您无法根据以下信息解决问题，请访问 www.philips.com/support 查阅常见问题列表，或联系您所在国家/地区的客户服务中心。

问题	可能的原因	解决方法
即使我打开了产品电源，产品也不加热。	电源线未牢固连接到产品。	确保电源线已稳固地连接到产品。
	深锅/烤盘未正确放置在产品上。	将深锅/烤盘正确地放在加热盘上。确保加热盘和深锅/烤盘之间没有其他物体。
使用期间有烧焦的食物味道。	深锅/烤盘的食物煮过头，烧焦了。	关闭产品。让深锅/烤盘冷却，用木制或塑料刮铲轻轻舀起烧焦的食物。清洗深锅/烤盘。
		以低温烹饪食物。小心不要过度烹饪食物。
	灰尘或食物留在深锅/烤盘下面，并被加热盘烧坏。	关闭产品。待产品冷却。擦拭清洁加热盘和深锅/烤盘底部。
		放置深锅/烤盘前，确保加热盘和深锅/烤盘之间没有水或食物。
使用期间，烤盘中会冒出烟雾	产品上油脂残留物导致冒烟。	每次使用时，请用软布或厨房纸巾吸走锅中多余的油脂。每次使用后，彻底清洁产品和所有部件。
	脂肪成分在烤盘煮熟。	如果烧烤富含脂肪的食材（如培根或五花肉），您可能会注意到食物上有烟冒出。有些脂肪会飞溅到烤盘两侧而被烧焦。同样，您用来腌制食物的油也可能导致一些烟味。要最大程度减少烟量，尽量不用或少用油。
	您接连烧烤了几批食材，但在烤完每批食材后未清洁烤盘。	粘在烤盘上多余的油和食物汁液或食物残渣容易烧焦。确保烤完每批食材后用厨房纸巾擦拭烤盘。 注：使用期间和使用后烤架很烫，应使用烤炉手套或防热手套。

食品接触用飞利浦多功能料理锅 HD2250 产品信息				
本产品适用于接触食品，请根据说明书要求正常使用本产品。本产品食品接触用材料及部件符合 GB 4806.1-2016 和相应食品安全国家标准要求，具体信息如下：				
食品接触用材料	用途	执行标准	备注	
涂层	涂层:聚四氟乙烯 基材:铝合金 YZAlSi11Cu3	烤盘	GB4806.10-2016 GB4806.9-2016	涂层使用温度不得高于 250℃
	涂层:聚甲基硅氧烷 基材:铝合金 YZAlSi11Cu3	深锅	GB4806.10-2016 GB4806.9-2016	
	涂层:聚甲基硅氧烷 基材:镀铝硅钢板 DX53D+AS	锅盖	GB4806.10-2016 GB4806.9-2016	
金属	不锈钢 06Cr190Ni10	蒸屉	GB4806.9-2016	避免长时间接触酸性食物
备注: 注1: 产品不宜作为容器长期存储食品。 注2: 本系列产品包含以上食品接触材料，部分机型可能不含个别材料，以实际产品为准！				

产品中有害物质的名称及含量						
部件名称	有害物质					
	铅(Pb)	汞(Hg)	镉(Cd)	六价铬(Cr(VI))	多溴联苯(PBB)	多溴二苯醚(PBDE)
温控器/连接器	○	○	X	○	○	○
电源线	X	○	○	○	○	○
线路板	X	○	○	○	○	○

本表格依据 SJ/T 11364 的规定编制。
○：表示该有害物质在该部件所有均质材料中的含量均在 GB/T 26572 规定的限量要求以下。
×：表示该有害物质至少在该部件的某一均质材料中的含量超出 GB/T 26572 规定的限量要求。



* 该表格中所显示的“有害物质”在产品正常使用情况下不会对人身和环境产生任何伤害。
* 该表格中所显示的“有害物质”及其存在的部件向消费者和回收处理从业者提供相关物质的存在信息，有助于产品废弃时的妥善处理。