

Warranty and Service:

For any information or problem, contact your local Philips dealer or authorized service center. For a list of authorized Philips service centers visit www.philips.co.in or contact our consumer care at 1800 102 2929 (Toll-free) or 1860 180 1111 (standard call rates apply)

www.philips.co.in

HD2289/00

Warranty Card:

This apparatus is covered under warranty against any defect due to defective material or workmanship for TWO YEAR warranty on the product. Warranty does not cover the damage to the product/ plates due to mishandling, negligence, breakage or cracking. In case a defect develops during the period of warranty, Philips Domestic Appliances India Ltd. undertakes to repair the apparatus FREE OF CHARGE through the dealer from whom it has been purchased or at any of the Philips Authorized Service Centers.

The warranty is not valid in case:

1. Apparatus is not used according to the user manual.
2. Defects caused by improper or reckless use.
3. Repairs are done by persons other than Philips Authorized service center.
4. Modifications of any nature made in the apparatus.
5. Tampered serial number.
6. Incomplete warranty card after purchase.
7. Product is used for a commercial purpose (i.e. other than domestic use).
8. Usage of parts not recommended by Philips or those made by other manufacturers.
All consumables and parts susceptible to normal wear and tear are not covered under warranty.



Week/ S. No. _____
 Date of Purchase _____
 Dealer's Name: _____
 Dealer's Stamp: _____
 Customer's Name and Address: _____
 Model No.: _____
 Dealer's Signature: _____

Panini Maker

Please read the guidelines provided in this DFU for important instructions, about appliance usage and warranty before using the product



www.philips.co.in



300006900382

PHILIPS

5. Troubleshooting

Problem	Cause	Solution
Appliance is not working	No power supply	Ensure power supply
	Plug not inserted properly	Ensure that the plug is inserted correctly in socket
Black /Charred spots in panini	Over cooking	Ensure you take out the panini at the required browning level
	Debris from the previous batch	Clean the plates thoroughly before placing a panini
Uneven browning	Bread does not touch the plates properly/-less filling	Ensure you place the bread properly with a good amount of filling
	No/less greasing	Grease panini and plates with butter/oil (Optional)
Smoke/Smell from the appliance	First few times of usage. The smoke/smell is due to initial heating of coil.	This is usual. If the problem continues. Contact the nearest Philips Service Centre
Water vapour deposition	Due to cooking moist bread/ moist filling	This is usual phenomenon. The vapour will disappear on continuous cooking

1. Introduction

Philips brings you a panini maker to enjoy grilled sandwiches and wraps, everyday.

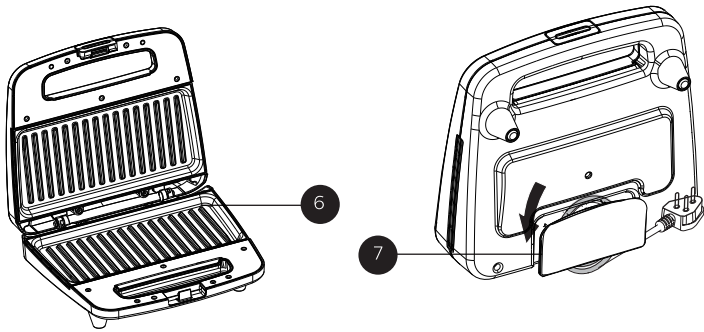
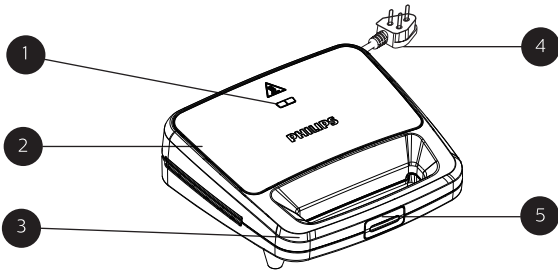
Technical specifications

Model No.	HD2289/00
Wattage	700W
Voltage	220-240V
Frequency	50~60 Hz
Protection	Class I
Protection against dust and moisture	Ordinary
Protection against ingress of water	IPX0
Flexi cord	Rubber insulated 0.7 m cord with 3 pin plug

In case these measures do not work, contact the nearest PHILIPS service center or call at customer care numbers. 1800 102 2929 (Toll-free) or 1860 180 1111 (standard call rates apply)

2. General description

- | | |
|--------------------|--------------------------|
| 1. Power indicator | 5. Handle lock |
| 2. Lid | 6. Toasting plates |
| 3. Handle | 7. Cord storage facility |
| 4. Power plug | |



1. Before the first use

Note

The appliance may give off some smoke when you use it for the first time.

Remove any stickers and wipe the body of the panini maker with a damp cloth. Clean the cooking plates with a damp cloth or sponge (see chapter 'Cleaning').

2. Using the appliance

Making toasted sandwiches

- To preheat the panini maker, put the mains plug in the wall socket.
 - The red light will be on.
 - When the green light turns on, the panini maker is ready to use.
- Press the handle lock and open the sandwich maker.
- Slightly grease the top and bottom plates with butter or oil to get the appealing golden brown color
 - Place one slice of bread on the bottom plate, add fillings and then place another slice of bread on the top of the filling or you could arrange the bread with filling separately and place it over hot plates. In case of wraps, place the wrap in the middle of the bottom plate
 - The filling should be spread evenly in the center of the bread. For wraps, fold the wrap in such a way that the filling is evenly distributed
 - If desired, apply oil/butter on the surface of bread too
 - Place the sandwiches/wraps on bottom plate by leaving some space from the edges of the bread or wrap
- To close the panini maker, hold the handle and close the lid slowly until it latches.
- Allow the panini maker to toast for 2-4 minutes based on the desired browning level.
 - If the bread slice does not fit, trim it before placing it onto the plate
 - You can open it to check whether the sandwiches are ready
 - The cooking time would depend on the type of bread, amount of filling and as per your desired browning level

Important instruction : The toasting plates are very hot. Don't touch the plates when the appliance is hot

- When the panini/ wrap is done, remove it carefully.
 - You could use wooden or plastic ladle to help. Do not use metal, sharp or abrasive materials.
- Repeat it for the next batch of sandwiches
- Unplug the appliance once done

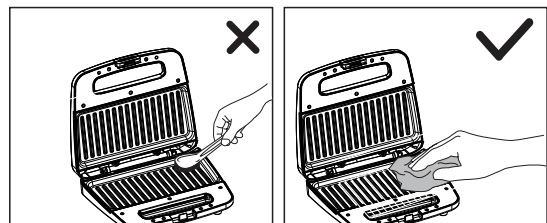
Note: During cooking the green light will turn on and off

3. Cleaning and maintenance

Note

- Never use aggressive or abrasive cleaning agents and materials, as this damages the non-stick coating of the plates**
- Neither immerse the appliance in water or any other liquid, nor rinse it under the tap.**

- Do not use metal, sharp or abrasive utensils.
- Switch off and unplug the appliance.
- Let the appliance cool down properly in open position.
- First remove excess oil from the plates with a piece of kitchen paper before you clean them.
- Use a wooden or plastic spatula to remove sticky food residues (for example solidified cheese) from the cooking plates.
- Clean the cooking plates with a moist soft cloth or sponge.
- Clean the outside of the appliance with a moist cloth.



4. Storage

- Wind the cord around the cord storage facility.
- Store appliance in vertical or horizontal position.

