

PHILIPS

FC8518, FC8517,
FC8516





注意事项

2



包装盒内有什么?

3



组装

4



吸力调控

5



请注意!

5



使用

6



清洁产品

7



更换过滤网

8

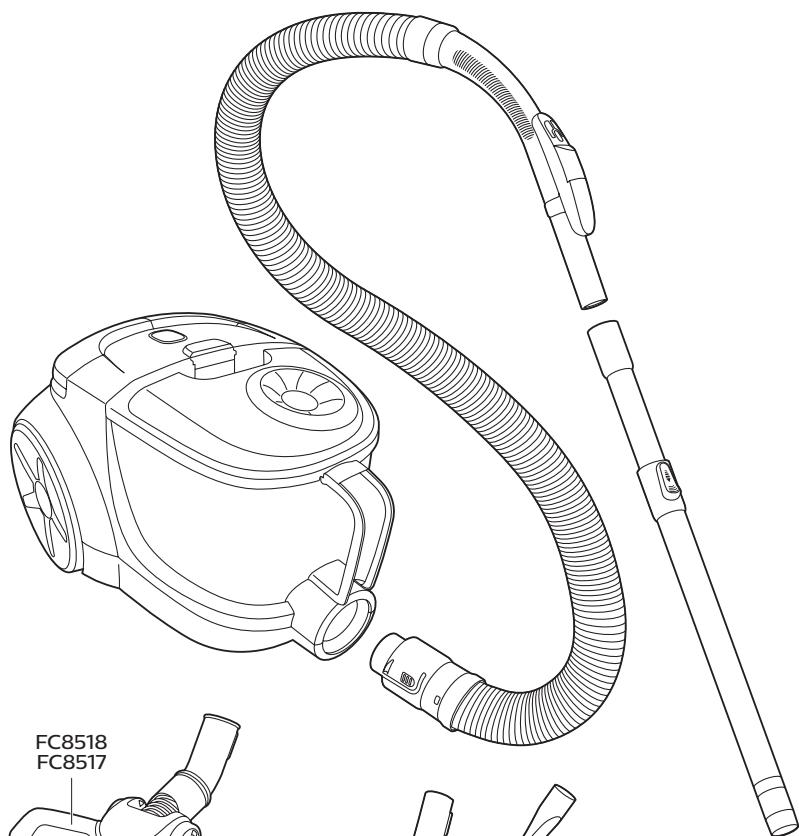


注意事项

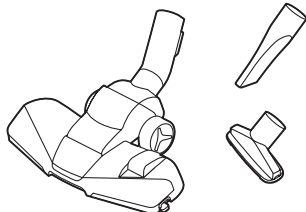
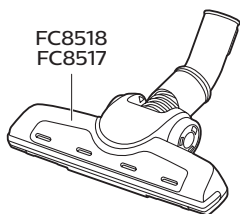




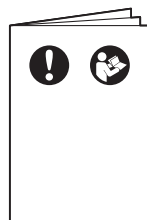
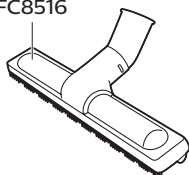
包装盒内有什么？



FC8518
FC8517

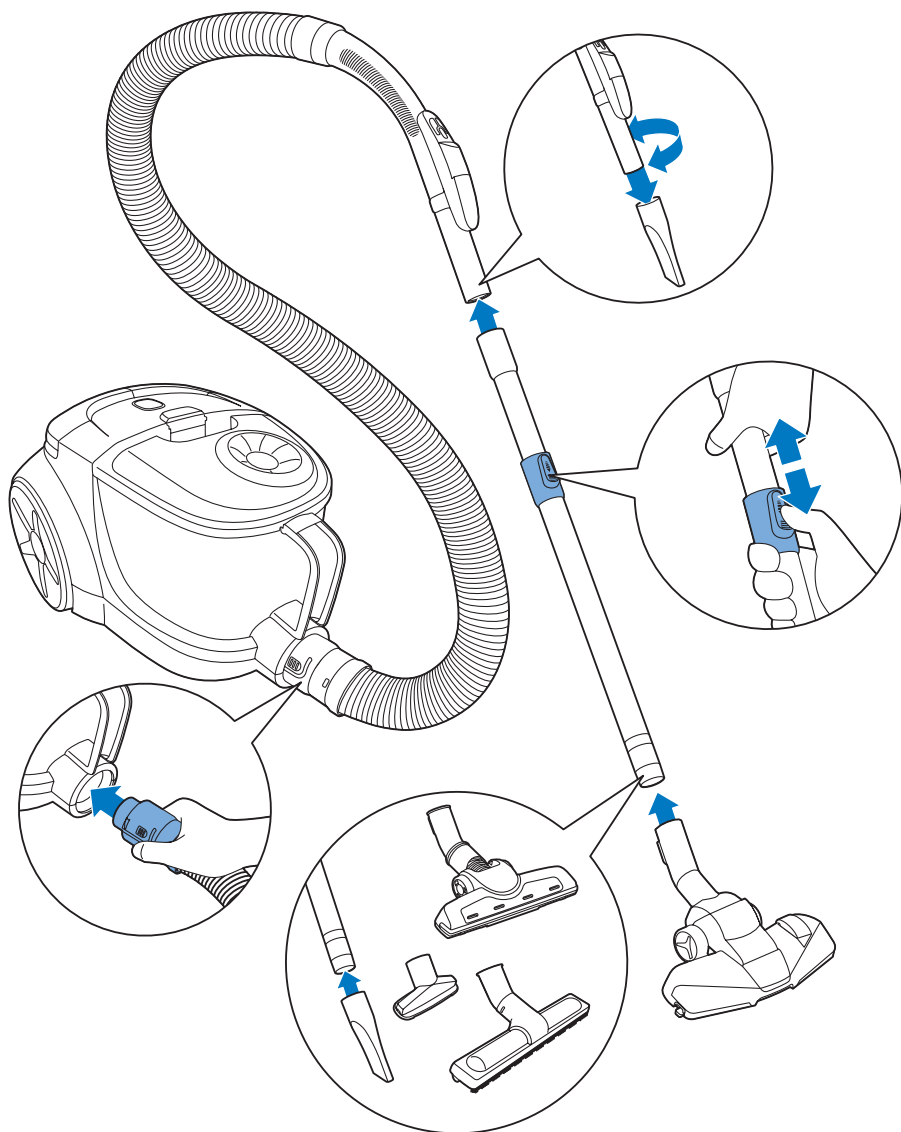


FC8518
FC8516



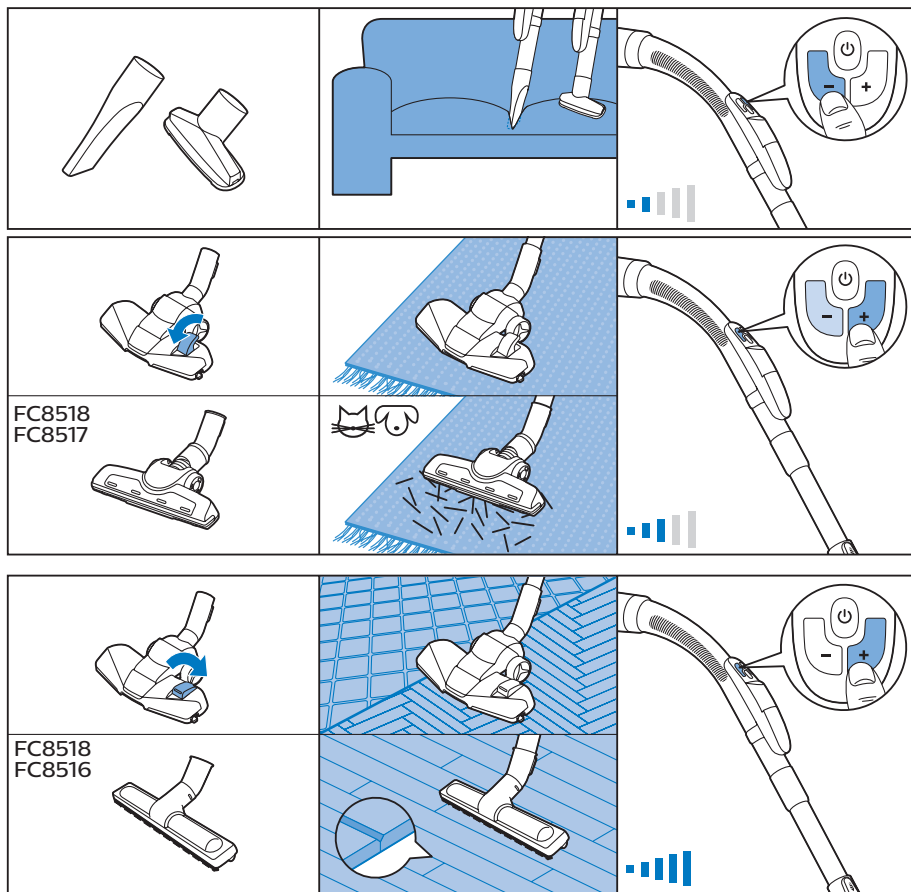


组装

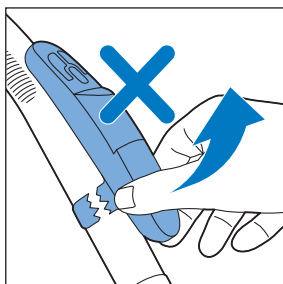
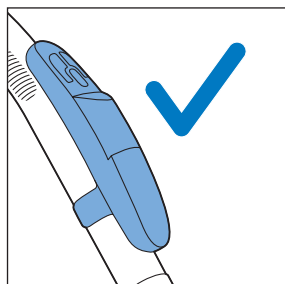




吸力调控

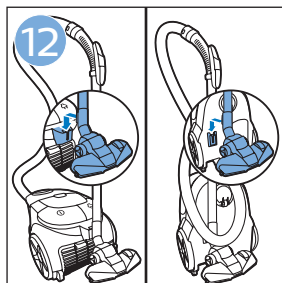
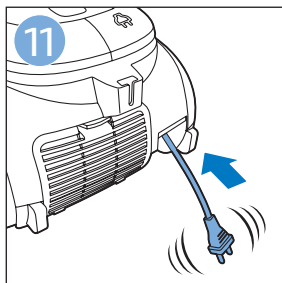
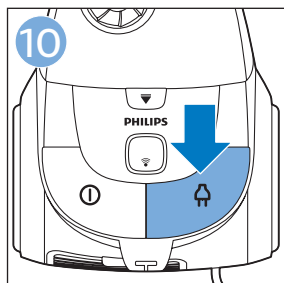
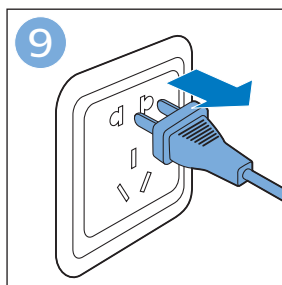
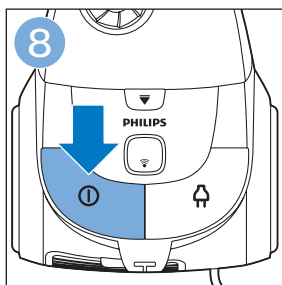
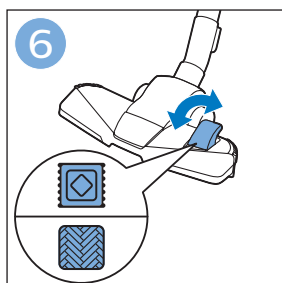
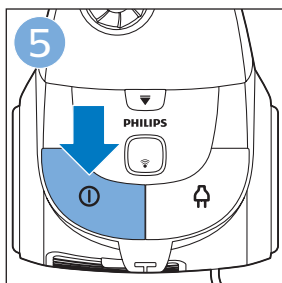
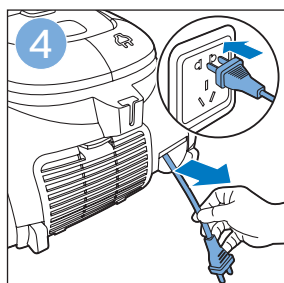
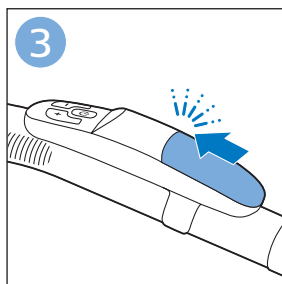
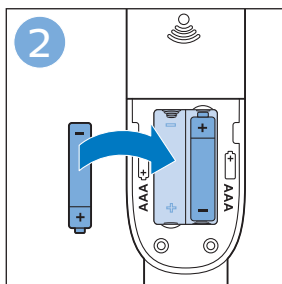
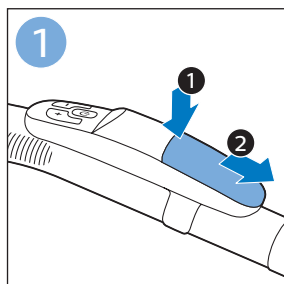


请注意!



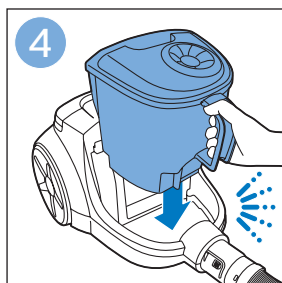
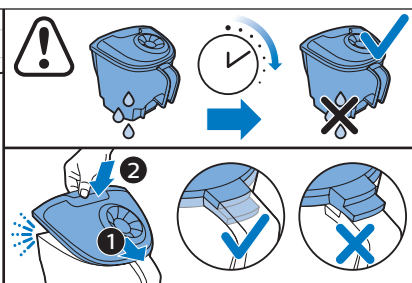
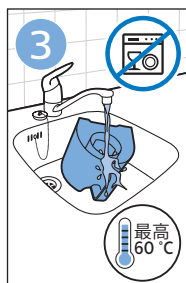
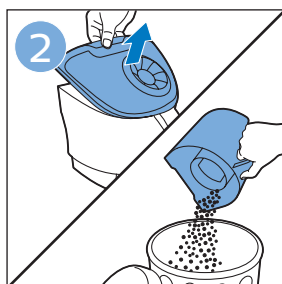
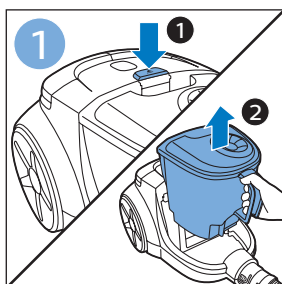
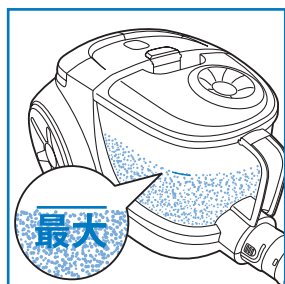


使用

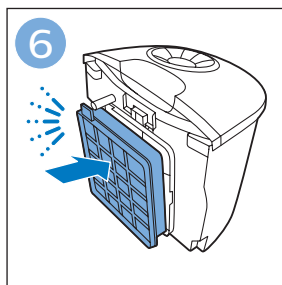
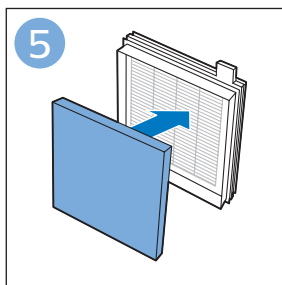
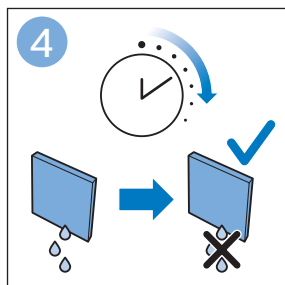
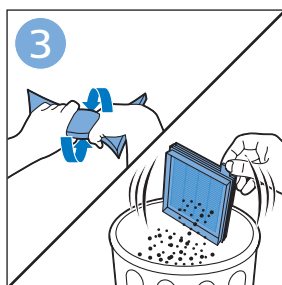
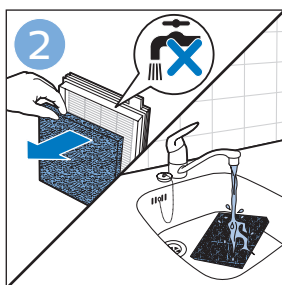
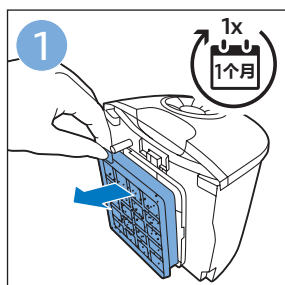




清洁产品



提示





更换过滤网

