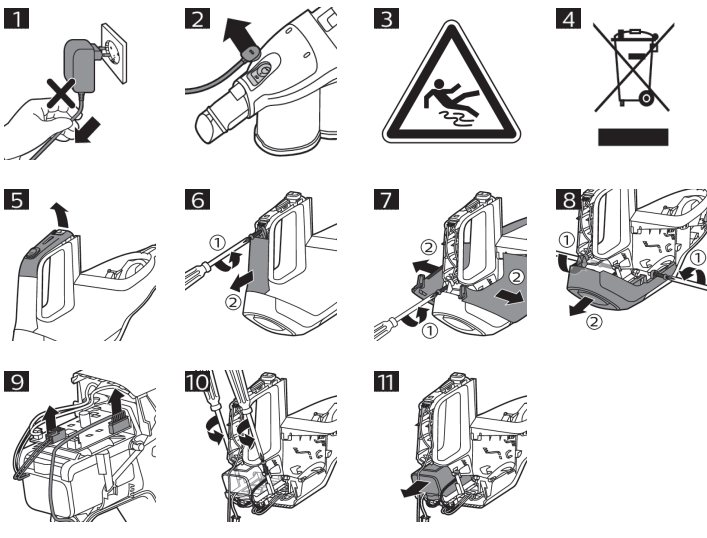
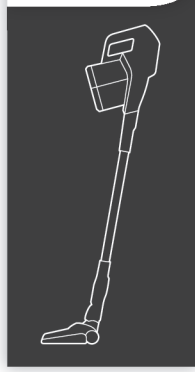




Scan me

www.philips.com/support



© 2022 Philips Domestic Appliances Holding B.V.

All rights reserved

保留所有权利

3000.062.6140.3 (07/2022)

> 75% 循环再造纸

保留备用

>75 % recycled paper

>75 % papier recyclé

English

Important safety information

Read this important information carefully before you use the appliance and its accessories and save it for future reference. The accessories supplied may vary for different products.

Danger

- Never vacuum up water or any other liquid. Never vacuum up flammable substances and do not vacuum up ashes until they are cold.
- Never immerse the appliance or the adapter in water or any other liquid, nor rinse it under the tap.

Warning

- Check if the voltage indicated on the adapter corresponds to the local mains voltage before you connect the appliance.
- Always check the appliance before you use it. Do not use the appliance or the adapter if it is damaged. Always replace a damaged part with one of the original type.
- The adapter contains a transformer. Do not cut off the adapter to replace it with another plug, as this causes a hazardous situation.
- This appliance is not intended for use by persons (including children) with reduced physical, sensory or mental capabilities, or lack of experience and knowledge, unless they have been given supervision or instruction concerning use of the appliance by a person responsible for their safety.
- Children should be supervised to ensure that they do not play with the appliance.
- Always keep the magnetic charging disc away from very small children.
- The plug must be removed from the socket-outlet before cleaning or maintaining the appliance.
- Unplug the adapter if you are not going to use the appliance for some time.
- When storing the appliance for more than a month (without usage or charging), make sure that the battery is charged to at least 50%. Storing the appliance with an empty battery may lead to irreversible damage to the battery.
- Also make sure that the adapter is unplugged when the appliance is stored.
- Do not let the motorized brush move over the mains cords of other appliances or other cables as this may cause a hazard.
- Keep loose clothing, hair and body parts away from the motorized brushes.
- Do not cover or block the ventilation openings when the appliance is operating.
- This vacuum cleaner is designed for household use only. Do not use this vacuum cleaner to vacuum up building waste, cement dust, ashes, fine sand, lime and similar substances. Never use the vacuum cleaner without any of the filters. This could damage the motor and shorten the life of the vacuum cleaner. Always clean all parts of the vacuum cleaner as shown in the user manual. Do not clean any parts with water and/or cleaning agents if this is not specifically shown in the user manual.
- Only charge the appliance with the adapter supplied. Only use 29V adapter ZD12D290050CN or 25V adapter ZD12D250050CN. The corresponding adapter number can be found on the adapter.
- Charge, use and store the product at a temperature between 5 °C and 40 °C.
- Do not open, modify, pierce, damage or dismantle the product or battery to prevent batteries from heating up or releasing toxic or hazardous substances. Do not short-circuit, overcharge or reverse charge batteries.
- Keep product and batteries away from fire and do not expose them to direct sunlight or high temperatures.
- If the product becomes abnormally hot or smelly, changes color or if charging takes longer than usual, stop using and charging the product and contact Philips.
- Do not place products and their batteries in microwave ovens or on induction cookers.
- If batteries are damaged or leaking, avoid contact with the skin or eyes. If this occurs, immediately rinse well with water and seek medical care.
- This product contains a rechargeable battery. The battery may only be replaced by a qualified service engineer.
- Take the appliance to an authorized Philips service center when you can no longer recharge it or when it runs out of power quickly.
- To prevent damage, never put ethereal oils or similar substances in the water tank or let the appliance pick them up.

Caution

- During charging, the adapter becomes warm to the touch. This is normal.
- Do not touch in, unplug or operate the appliance with wet hands.
- Do not remove the adapter from the wall socket by pulling at the cord (Fig. 1). When you do not use the charging station for charging, always unplug the appliance by first detaching the magnetic charging disc from the underside of the appliance (Fig. 2).
- Always switch off the appliance after use and before you charge it.
- Never block the exhaust air openings during vacuuming.
- Do not clean the dust container and the dust container lid in the dishwasher. They are not dishwasher-proof.
- Make sure to wash the filter at least once every two weeks by hand only, to ensure best performance. Squeeze until the water is clean. Let the filter dry for 24 hours before reuse.
- Do not clean the filter with scouring pads or abrasive cleaning agents.
- Always use the vacuum cleaner with the filter assembled.
- If you clean the filter with water, make sure that it is completely dry before you put it back into the dust container. Do not dry the filter in direct sunlight, on the radiator or in the tumble dryer.
- Replace the filter if it can no longer be cleaned properly or if it is damaged (see 'Ordering accessories').
- Never use any accessories or parts from other manufacturers or that Philips does not specifically recommend. If you use such accessories or parts, your warranty becomes invalid.
- Use and store the appliance at a temperature between 5 °C and 40 °C.
- Make sure that the appliance is installed with the charging station attached to the wall according to the instructions in the user manual.
- Be careful when you drill holes in the wall to attach the charging station, to avoid the risk of electric shock.
- As this appliance uses water to clean, the floor may remain wet and slippery for a while (Fig. 3).
- To prevent damage, never put wax, oil, floor maintenance products or liquid floor cleaners that are not water-dilutable in the water tank.
- Do not mix different types of liquid floor cleaner. When you have used one liquid floor cleaner, first empty and rinse the water tank before you add another liquid floor cleaner to the water in the water tank.
- To prevent damage, do not use liquid floor cleaners that are not transparent or even milky.
- Never exceed the maximum quantities mentioned on the bottle when you use a liquid floor cleaner. Do not add more than a few drops to the water in the water tank, as this tank has a capacity of 200 ml.
- Do not lift or tilt the nozzle when the water tank is assembled and full, as water may spray out of the water tank.
- Do not clean the metal wetting strip with a sharp object, as this may damage the strip. Only clean the wetting strip by rinsing it under the tap. Replace the wetting strip when you can no longer clean it.
- Replace the wetting strip only with an original strip. For ordering a new strip, see chapter 'Ordering accessories'.
- Clean the water tank according to the instructions. The water tank is not dishwasher-proof.
- Do not use aggressive cleaning agents or tools to clean the Aqua Boost pedal.
- After mopping the floors, do not store the appliance with the water tank attached on the charging station. If you do this, the wet mopping pad will touch the wall and this may damage the wall. Always remove the water tank before you store the appliance.
- To guarantee good cleaning results and proper functioning of the appliance and water tank, always use original Philips cleaning pads.

Electromagnetic fields (EMF)

This Philips appliance complies with all applicable standards and regulations regarding exposure to electromagnetic fields.

Using the appliance

Usage restrictions

- Only use the water tank on hard floors with a water-resistant top coat (such as linoleum, enameled tiles and varnished parquet) and stone floors (such as marble). If your floor has not been treated to make it water-resistant, check with the manufacturer if you can use water to clean it. Do not use the water tank on hard floors of which the water-resistant top coat is damaged.
- Only use the water tank on linoleum floors that are properly affixed to prevent linoleum from being drawn into the mopping nozzle.
- Do not use the water tank to clean carpets.
- Do not move the appliance with water tank assembled sideways, as this leaves water traces. Only move forwards and backwards.

Note: The operating time depends on the power level used during cleaning.

Mopping pad and wetting strip

The appliance comes with one wetting strip and two microfiber mopping pads. With the water tank, wetting strip and microfiber mopping pad attached to the standard floor nozzle, you can clean hard floors.

Using liquid floor cleaner in the water tank

If you want to add a liquid floor cleaner to the water in the water tank, make sure that you use a low-foaming or non-foaming liquid floor cleaner that can be diluted in water. As the water tank has a capacity of 200ml, you only have to add a few drops of liquid floor cleaner to the water.

Cleaning the water tank

To clean the water tank, mix one part vinegar with three parts water. Pour this mixture into the water tank and close the cap. Shake the water tank and put the water tank on a water-resistant surface. Leave the water-vinegar mixture in the water tank overnight. Then empty the water tank, rinse it thoroughly with fresh water, and use it normally again.

Caution: Water will leak from the water tank during cleaning, with and without the wetting strip attached to the nozzle.

To empty the water tank, hold the water tank over a sink, remove the cap and tilt the water tank to the side of the filling hole. Then turn the water tank over to let the water flow into the sink. To remove the remaining water from the water tank, turn the water tank on its long side with the filling hole pointing towards the sink. Then tilt the water tank forwards to let the remaining water flow out of the water tank.

Note: Always store the water tank with the cap removed from the filling hole.

Ordering accessories

To buy accessories or spare parts, visit www.philips.com/parts-and-accessories or go to your Philips dealer. You can also contact the Philips Consumer Care Center in your country (see the international warranty leaflet for contact details).

Warranty and support

If you need information or support, please visit www.philips.com/support or read the international warranty leaflet.

Recycling

- This symbol means that electrical products and batteries shall not be disposed of with normal household waste (Fig. 4).
- Follow your country's rules for the separate collection of electrical products and batteries.

Removal of built-in rechargeable battery

The built-in rechargeable battery must only be removed by a qualified professional when the appliance is discarded. Before removing the battery, make sure that the appliance is disconnected from the wall socket and that the battery is completely empty.

Take any necessary safety precautions when you handle tools to open the appliance and when you dispose of the rechargeable battery.

When you handle batteries, make sure that your hands, the product and the batteries are dry.

To avoid accidental short-circuiting of batteries after removal, do not let battery terminals come into contact with metal objects (e.g. coins, hairpins, rings). Do not wrap batteries in aluminum foil. Tape battery terminals or put batteries in a plastic bag before you discard them.

- 1 Disconnect the appliance from the wall socket and let it run until the motor stops.
- 2 Remove the dust container from the appliance.
- 3 Pull the display cover from the top of the handgrip (Fig. 5).
- 4 Undo the screw of the handle cover and pull the handle cover off the appliance (Fig. 6).
- 5 Undo the bottom cover screw (1) and then remove the side panels. (Fig. 7)
- 6 Remove the bottom cover screws on the left and right side (1). Then remove the bottom cover (2) (Fig. 8).
- 7 Disconnect the battery connector and the display connector from the printed circuit board (Fig. 9).
- 8 Undo the battery frame screws (Fig. 10).
- 9 Remove the battery from the appliance and dispose of it according to the rules (Fig. 11).

Operating time



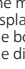
Using the appliance with Turbo power mode (Setting 2)	22 minutes*
---	-------------

Using the appliance with regular power mode (Setting 1)	50 minutes*
---	-------------

* Based on use of the appliance with the Aqua Nozzle

Troubleshooting

This chapter summarizes the most common problems you could encounter with the appliance. If you are unable to solve the problem with the information below, visit www.philips.com/support for a list of frequently asked questions or contact the Consumer Care Center in your country.

Problem	Possible cause	Solution
The appliance does not work when I push the button.	When the battery is empty, the bottom segment of the display flashes red.	To charge the battery, connect the appliance to the charging station or attach the magnetic charging disc of the charging station directly to the handheld vacuum cleaner.
	You have to push the slider forward to switch on the appliance.	Push the slider forward to setting 1 to switch on. Increase the suction power further by pushing the slider to setting 2 to clean dirty surfaces.
The appliance has a lower suction power than usual.	The filter and the cyclone are dirty.	Clean the filter and the cyclone. Make sure that you wash the sponge filter at least once every two weeks if you use the appliance regularly.
	You have not attached the dust container lid properly to the dust container. You have not attached the dust container to the appliance properly. In both cases, there will be a loss of suction power.	Make sure that you attach the dust container lid to the dust container and the dust container to the appliance properly.
	An object may be stuck inside the tube.	Remove the tube and check for blockages.
Dust escapes from the appliance.	The filter is dirty.	Clean the filter.
	The filter is not present in the appliance.	Make sure that the filter is in the appliance and assembled correctly.
	Something blocks the cyclone.	Check the cyclone for objects stuck in it and remove any object that blocks the cyclone.
	If dust falls out of the dust container, the dust container lid is probably not attached properly to the dust container.	Empty the dust container and attach the dust container lid correctly.
The appliance does not move smoothly across the floor when cleaning a carpet.	You selected a too high suction power.	Reduce the suction power by choosing setting 1.
The brush does not turn anymore.	The brush encounters too much resistance.	Clean the brush with a pair of scissors or by hand.
	The brush may stop turning when it encounters too much resistance from high-pile carpet.	Switch off the appliance and then switch it back on again.
	You have not installed the roller brush in the nozzle properly after cleaning.	Follow the instructions in the cleaning chapter of the user manual to slide the roller brush into the nozzle properly and secure it inside the nozzle by snapping home the locking lever.
The LEDs in the nozzle do not come on.	You have not attached the nozzle to the appliance or handheld properly.	Attach the nozzle to the appliance or handheld properly.
The appliance is not charging.	The magnetic connector is not connected correctly to the charging disc or the adapter is not inserted into the wall socket properly.	Make sure that the magnetic connector is connected properly to the charging disc and that the adapter is inserted into the wall socket properly.
	You have not connected the correct adapter and cord.	Make sure that you use the correct adapter and cord.
		If you have checked the above and the appliance still does not charge, take it to a Philips service center or contact the Consumer Care Center via www.philips.com/support .
FC6729: The mini turbo brush does not function properly.	The roller brush is blocked.	Remove hairs from the brush with a pair of scissors (see user manual).
	The roller brush is blocked by fabric or surfaces during cleaning.	Keep the mini turbo brush aligned with the surface and do not push the turbo brush into soft surfaces.
	The mini turbo brush is not fully closed.	Make sure that the top and bottom parts of the mini turbo brush are properly connected and there is no gap between the two parts. Check if the locking ring is in closed position (see user manual).
When I use my vacuum cleaner I sometimes feel static electricity shocks.	Your vacuum cleaner builds up static electricity. The lower the air humidity, the more static electricity the appliance builds up.	Discharge the appliance by frequently holding the tube against other metal objects in the room (for example the legs of a table or chair, etc.). You can also raise the air humidity level in the room.
	You vacuumed up fine sand, lime or a similar substance. This also causes static electricity.	Empty the dust container and clean the filter according to the instructions in the user manual.
The bottom segment of the display flashes red.	The battery is empty.	Charge the battery by connecting the appliance to the charging station. You can also charge the appliance directly by inserting the adapter into the wall socket and attaching the magnetic charging disc to the underside of the appliance.
		
All segments of the display flash quickly.	An error has occurred.	Check for any blockages in the tube or nozzle. Try recharging the appliance, emptying the dust container and cleaning the filter. If this does not help, take the appliance to a Philips service center or contact the Consumer Care Center via www.philips.com/support .
		
The middle segment of the display flashes white and the bottom segment of the display flashes red.	The appliance is stored or charged at temperatures below 5 °C.	Move the appliance to a warmer room. Do not store or charge the appliance at temperatures below 5 °C or above 40 °C.
		
The water flow from the water tank is reduced.	The wetting strip is blocked by excessive residue.	Remove the wetting strip and clean it.
	The microfiber mopping pad is not placed correctly and blocks the wetting strip as a result. This prevents water from flowing out of the wetting strip.	Make sure that you place the mopping pad correctly. Check the user manual for proper placement.
	The water tank is empty or nearly empty.	Refill the water tank.
	You use a microfiber mopping pad that is not supplied by Philips.	Only use an original Philips microfiber mopping pad. You can buy these mopping pads in the online Philips shop at www.philips.com/parts-and-accessories or at your Philips dealer. You can also contact the Philips Consumer Care Center in your country (see the international warranty leaflet for contact details).
The output of water is faster and larger than normal.	If the water tank produces an uncontrolled and too large amount of water, the cap of the tank is probably not closed properly.	Check the cap and make sure it is fully and properly closed.
	The strip is not placed properly in the bottom of the water tank.	Check the strip and make sure that it is fitted properly in the bottom plate of the water tank.
The floor dries with stripes when I use the water tank.	You added too much liquid cleaner to the water.	Use only a few drops or use a cleaner that foams less.

重要安全信息

使用本产品及其附件之前，请仔细阅读本重要信息，并妥善保管以供日后参考。随附的附件可能因产品而异。

危险

- 切勿吸入水或其他任何液体。切勿吸入易燃物质，也不要吸入未冷却的灰烬。
- 切勿将本产品或适配器浸入水或其他任何液体中，也不要将它们放在水龙头下冲洗。

警告

- 在将本产品连接电源前，务必检查当地的电压是否与电源适配器所标电压一致。
- 使用前，请务必检查产品。如果产品或适配器受损，请停止使用。请务必用原装型号更换损坏的部件。
- 适配器中包含一个变压器。请勿剪下适配器更换其他插头，否则将导致严重后果。
- 产品不建议由有肢体、感官或精神能力缺陷或缺乏使用经验和知识的人（包括儿童）使用，除非有负责他们安全的人对他们进行与产品使用有关的监督或指导。
- 请照顾好儿童，本产品不能用于玩耍。
- 务必将磁性充电圆盘放置到儿童接触不到的地方。
- 清洁或维护产品之前，必须先从插座拔掉插头。
- 如果在一段时期内不使用本产品，请拔下适配器插头。
- 将产品存放超过一个月（不使用或不充电）时，请确保电池至少有 50% 的电量。如果在电池电量耗尽的情况下存放产品，可能会对电池造成不可逆的损坏。
- 同时，确保在存放产品时拔下适配器。
- 切勿让电动刷在其它产品的电源线或其它线缆上移动，否则可能会引发危险。
- 确保宽松的衣服、毛发和身体部位远离电动刷。
- 产品运行时，切勿覆盖或堵塞通风口。
- 根据设计，本吸尘器仅限于家用。切勿使用本吸尘器清理建筑垃圾、水泥灰、灰尘、细沙、石灰和类似的物质。切勿在没有任何滤网的情况下使用本吸尘器。这会损坏马达并缩短吸尘器的使用寿命。务必按照用户手册中的说明清洁吸尘器的所有部件。请勿使用水和/或清洁剂清洁任何部件（如果用户手册中未特别说明）。
- 只能用随附的适配器为本产品充电。请仅使用 29 伏适配器 ZD12D290050CN 或 25 伏适配器 ZD12D250050CN。可以在适配器上找到相应的适配器编号。
- 充电、使用和存放本产品的温度应介于 5 ° C 至 40 ° C 之间。
- 为防止电池发热或释放有毒有害物质，切勿打开、改装、刺穿、损坏或拆卸产品或电池。切勿使电池短路、过度充电或反向充电。
- 请将产品和电池远离火源，切勿将其暴露于阳光直射处或高温下。
- 如果产品异常发热或发出异味、变色或充电时间比平时长，请停止使用并停止为其充电，并联系飞利浦。
- 切勿将产品及其电池放置在微波炉中或电磁炉上。
- 如果电池损坏或出现泄漏，请避免与皮肤或眼睛接触。如果不慎接触，请立即用清水冲洗并就医。
- 本产品包含充电电池。只有具备资格的服务工程师才能更换电池。
- 当充电电池无法继续充电或耗电很快时，请将产品送至授权的飞利浦服务中心。
- 为防止受损，切勿将香精油或类似物质放入水箱中，也不要用品清扫它们。

注意

- 充电期间，适配器会有微热。这是正常现象。
- 切勿用湿手插入、拔下或操作产品。
- 切勿以拉拔电源线 (图 1) 的方式将适配器从电源插座上拔下。如果没有使用充电座充电，在断开产品的电源连接时，务必先从产品的底部取下磁性充电圆盘 (图 2)。
- 使用后和充电前，请务必关闭产品。
- 吸尘时切勿阻塞排气口。
- 切勿在洗碗机中清洗集尘盒及集尘盒盖。这些部件不可在洗碗机中清洗。
- 务必仅用手每两周至少清洗一次过滤网，以确保实现最佳性能。挤干，直到水干净为止。将过滤网晾干 24 小时，然后再重复使用。
- 请勿使用丝绒型洗刷用具或腐蚀性清洁剂清洁过滤网。
- 使用无线吸尘器时，请确保装上过滤网。
- 如果用水清洁过滤网，确保其完全干燥后再放回集尘盒中。切勿在直射的阳光、散热器上或滚筒式烘干机中干燥过滤网。
- 如果无法再洗净过滤网或其已损坏 (请参见 '订购配件')，请予以更换。
- 切勿使用其他制造商生产的或未经飞利浦特别推荐的任何配件或部件。如果您使用了此类配件或部件，本产品的保修将会失效。
- 使用和存放本产品的温度应介于 5 ° C 至 40 ° C 之间。
- 在安装本产品时，确保按照用户手册中的说明将充电座安装到墙上。
- 在墙上钻孔安装充电座时应多加小心，以防发生触电危险。
- 因本产品使用水来清洁，清洁后的一段时间内 (图 3) 地板上会有些湿和打滑。
- 为防止受损，切勿将蜡、油、地板维护产品或非水稀释性液体地板清洁剂倒入水箱中。
- 切勿混合不同类型的液体地板清洁剂。使用一种地板清洁剂后，需要先倒空并冲洗水箱，然后才能在水箱的水中加入另一种液体地板清洁剂。
- 为防止受损，请不要使用非透明或乳状的液体地板清洁剂。
- 使用液体地板清洁剂时，切勿超过瓶子上标示的最大量。由于水箱的容量为 200 毫升，您只需向水箱的水中加入几滴清洁剂即可。
- 组装水箱及水箱已满时，请勿提起或倾斜吸嘴，否则水可能会从水箱中喷出。
- 请勿用尖锐物体清洁湿的金属条，否则可能造成损坏。只能在自来水下清洁湿的金属条。无法再清洗干净时，请更换湿的金属条。
- 只能使用原装金属条更换湿的金属条。要订购新的金属条，请参阅“订购附件”一章。
- 根据说明清洁水箱。水箱不可用洗碗机清洗。
- 请勿使用腐蚀性清洁剂或使用工具来清洁 Aqua Boost 踏板。
- 清洁完地板后，请不要将装有水箱的本产品存放在充电座上。否则，湿清洁布将接触墙壁并可能对墙体造成损坏。存放本产品之前请务必先卸下水箱。
- 为保证良好的清洁效果及产品和水箱的正常运作，请务必使用原装飞利浦清洁布。

电磁场 (EMF)

本 Philips 产品符合所有有关暴露于电磁场的适用标准和法规。

使用本产品**使用限制**

- 仅在具有防水表面涂层的硬地板（例如油毡地板、瓷板和刷漆木地板）和石材地板（例如大理石）上使用水箱。如果您的地板未经处理，且不具有防水作用，请咨询制造商，了解是否可以用水清洁。请勿在防水表面涂层损坏的硬地板上使用水箱。

- 仅在正确贴合的油毡地板上使用水箱，以防止油毡吸入拖地吸嘴中。
- 请勿使用水箱清洁地毯。
- 请勿侧向移动装有水箱的产品，这样会留下水痕。只能前后移动。

注意：运行时间取决于清洁期间所使用的功率大小。

清洁布和湿的金属条

本产品随附一个湿的金属条和两块微纤维清洁布。安装好水箱后，您可以将湿的金属条和微纤维清洁布可安装到标准地板吸嘴，以便用于清洁硬地板。

在水箱中使用液体地板清洁剂

如果您要在水箱的水中加入液体地板清洁剂，请确保使用可在水中稀释的低泡沫或无泡沫液体地板清洁剂。由于水箱容量为 200 毫升，您只需在水中加入几滴液体地板清洁剂即可。

清洁水箱

如需清洁水箱，请将一份醋与三份水混合。将混合液倒入水箱中，盖上盖子。摇晃水箱，然后将水箱放在防水表面上。将水醋混合液在水箱中存放一夜。然后，倒空水箱，用清水彻底冲洗后再正常使用。

警告：在清洁过程中，不论吸嘴上是否安装湿的金属条，水都会从水箱中漏出。

要倒空水箱，请将水箱拿到水槽上方，取下水箱盖，并向注水孔一侧倾斜水箱。然后将水箱翻转过来，以便让水流入水槽。要将剩余的水从水箱中倒出，请沿水箱的长边翻转，并将注水孔朝向水槽。然后向前倾斜水箱，以便让剩余的水从水箱中流出。

注意：存储水箱时，务必从注水孔上取下盖子。

订购配件

如需购买附件或备件，请访问

www.philips.com/parts-and-accessories 或联系您的飞利浦经销商。您还可以联系所在国家/地区的飞利浦客户服务中心（请参阅保修卡了解详细联系信息）。

保修和支持

如需信息或支持，请访问 www.philips.com/support 或阅读保修卡。

回收

- 此符号表示电器产品和电池不能与一般的生活垃圾一同弃置(图 4)。
- 请遵守您所在国家/地区有关分类回收电器产品和电池的规定。

产品中有害物质的名称及含量						
部件名称	有害物质					
	铅 (Pb)	汞 (Hg)	镉 (Cd)	六价铬 (Cr (VI))	多溴联苯 (PBB)	多溴二苯醚 (PBDE)
充电式吸尘器	X	○	○	○	○	○
电源适配器	○	○	○	○	○	○

本表格依据 SJ/T 11364 的规定编制。
 ○: 表示该有害物质在该部件所有均质材料中的含量均在 GB/T 26572 规定的限量要求以下。
 X: 表示该有害物质至少在该部件的某一均质材料中的含量超出 GB/T 26572 规定的限量要求。

取出内置充电电池

丢弃产品时，必须仅由有资质的专业人员取出内置充电电池。取出电池之前，请确保产品与电源插座断开连接并且电池电量已完全耗尽。

当您使用工具打开产品时以及在您弃置充电电池时，请采取必要的安全保护措施。

处理电池时，请确保您的双手、产品和电池都是干燥的。

为避免电池拆卸后发生意外短路，切勿让电池端子接触金属物体（例如硬币、发夹、戒指）。切勿用铝箔包裹电池。在丢弃之前，请用胶带将电池端子粘住或将电池放在塑料袋中。

- 1 断开本产品的电源连接并让其继续运行，直至电机停止转动。
- 2 从产品上卸下集尘盒。
- 3 拆下手柄(图 5)顶部的显示屏盖。
- 4 拧下手柄盖的螺钉，然后将手柄盖从产品(图 6)上取下。
- 5 拧下底盖螺钉(1)，然后卸下两侧面板。(图 7)
- 6 卸下左侧和右侧的底盖螺钉(1)。然后卸下底盖(2)(图 8)。
- 7 从印刷电路板(图 9)上断开电池连接器和显示屏连接器。
- 8 拧下电池架螺钉(图 10)。
- 9 从产品中取出电池并按照规定(图 11)处理电池。

工作时间

在“加速”功率模式下使用本产品 22 分钟*

产品（设置 2）

在常规功率模式下使用本产品 50 分钟*

产品（设置 1）



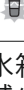
* 基于将本产品与 Aqua 吸嘴一起使用

故障处理方法

本章归纳了使用本产品时最常见的一些问题。如果您无法根据以下信息解决问题，请访问

www.philips.com/support 查阅常见问题列表，或联系您所在国家/地区的客户服务中心。

问题	可能的原因	解决方法
按下按钮时，产品不工作。	电池电量耗尽时，显示屏底段呈红色闪烁。	为电池充电，做法为将产品连接到充电座上，或将充电座的磁性充电圆盘直接连接到手持式吸尘器上。
	必须向前推动滑块才能打开产品。	将滑块向前推动到设置 1 以打开。将滑块向前推动到设置 2 以进一步增加吸力来清洁脏污表面。
本产品的吸力比往常要小。	过滤网和旋风滤网不干净。	清洁过滤网和旋风滤网。如果您经常使用本产品，请确保每两周至少清洗一次海绵滤网。
	您未将集尘盒盖正确安装到集尘盒上。您未将集尘盒正确安装到产品上。在这两种情况下，吸力将降低。	请确保您将集尘盒盖正确安装到了集尘盒上，并将集尘盒正确安装到了产品上。
	管内可能卡有物体。	取下管件并检查阻塞情况。
灰尘从产品中溢出。	过滤网变脏。	清洁过滤网。
	滤网未放入产品中。	确保滤网已放入产品并正确安装。
	污垢堵塞了旋风滤网。	检查旋风滤网是否被物体卡住，并清除任何堵塞旋风滤网的物体。
	如果灰尘从集尘盒中掉出，则集尘盒盖可能未正确安装到集尘盒上。	倒空集尘盒，并正确安装集尘盒盖。

问题	可能的原因	解决方法
清洁地毯时，产品无法在地板上顺畅移动。	您选择的吸力太大。	通过选择设置 1 来降低吸力。
滚刷不再旋转。	滚刷遇到的阻力太大。	用剪刀或用手清洁滚刷。
	滚刷在长毛绒地毯上遇到太大阻力时，可能会停止转动。	关闭产品，然后将其重新打开。
	您没有在清洗滚刷后将其正确安装到吸嘴上。	请按照本用户手册“清洁”一章中的说明，将滚刷正确滑入吸嘴，并将锁定杆扣合到位，以便将滚刷固定到吸嘴内。
吸嘴中的 LED 指示灯不亮。	您未将吸嘴正确安装到产品上，或未正确手持。	将吸嘴正确安装到产品上，或采用正确的手持方式。
产品未充电。	磁性连接器未正确连接到充电圆盘，或适配器未正确插入电源插座。	请确保磁性连接器正确连接到充电圆盘，且适配器正确插入电源插座。
	您没有连接正确的适配器和电源线。	请确保使用正确的适配器和电源线。
		如果已执行上述检查但产品依然无法充电，请将其送至飞利浦维修中心，或通过 www.philips.com/support 联系客服服务中心。
FC6729：迷你涡轮刷无法正常工作。	滚刷被阻塞。	用剪刀清除刷子上的毛发（请参见用户手册）。
	清洁过程中，滚刷被织物或表面阻塞。	保持迷你涡轮刷与表面对齐，且请勿将涡轮刷推入软质表面。
	迷你涡轮刷未完全关闭。	确保迷你涡轮刷的顶部和底部正确连接，两部分之间没有间隙。检查闭锁环是否处于关闭位置（请参见用户手册）。
有时，在使用吸尘器时会有触静电的感觉。	吸尘器会积聚静电。空气湿度越低，产品积聚的静电就越多。	经常握住硬管使其与房间中的其它金属物体接触（例如，桌椅脚等），对产品进行放电。您也可以增加房间的空气湿度。
	您使用本产品清理细沙、石灰或类似的物质。这还会引发静电。	请清空集尘盒，并按照用户手册中的说明清洁滤网。
显示屏底段呈红色闪烁。 	电池已耗尽。	将产品连接到充电座为电池充电。您也可以将适配器插入电源插座并将磁性充电圆盘连接到产品的底部来直接为产品充电。
显示屏所有指示段快速闪烁。 	发生错误。	检查管道或吸嘴是否被阻塞。尝试重新为产品充电、清空集尘盒并清洁过滤网。如果这不起作用，可以将产品送至飞利浦维修中心，或通过 www.philips.com/support 联系客服服务中心。
显示屏的中间格段呈白色闪烁，底部格段呈红色闪烁。 	产品存放在 5° C 以下的环境中或在该环境中充电。	将产品移至较暖和的房间。切勿将本产品存放于温度低于 5° C 或高于 40° C 的环境，或在该环境中充电。
水箱的水流量减少。	湿的金属条被过多的残留物阻塞。	卸下湿的金属条，并进行清洁。
	微纤维清洁布未正确放置，因此阻塞了湿的金属条。这样可以防止水从湿的金属条流出。	请确保您正确放置了清洁布。有关如何正确放置的方法，请参阅本用户手册。
	水箱为空或几乎无水。	为水箱加水。
	您使用了非飞利浦提供的微纤维清洁布。	仅限于使用原装飞利浦微纤维清洁布。您可以在飞利浦网上商城 www.philips.com/parts-and-accessories 或飞利浦经销商处购买这些清洁布。您还可以联系所在国家/地区的飞利浦客户服务中心（请参阅国际保修卡了解详细联系信息）。
出水速度比通常更快，量更大。	如果水箱出水速度不可控且水量过大，则可能是水箱盖没盖好。	检查水箱盖并确保其已完全闭合盖好。
	金属条未正确置于水箱底部。	检查金属条并确保其已正确安装在水箱底板上。
当使用水箱时，地板出现干纹。	向水中加入了过多液体清洁剂。	只需使用几滴或使用泡沫较少的清洁剂。

PHILIPS

产品：飞利浦手持无绳真空吸尘器
型号：FC6729
额定电压：100V~240V
额定频率：50/60Hz
额定电流：0.5A
生产日期：请见产品底部
产地：中国江苏苏州



飞利浦家电（中国）投资有限公司
上海市静安区灵石路728弄20号201室
全国顾客服务热线：4008 800 008

本产品根据国标 GB4706.1-2005, GB4706.7-2014, GB4343.1-2018及 GB17625.1-2012制造

PHILIPS

产品：飞利浦手持无绳真空吸尘器
型号：FC6730
额定电压：100V~240V
额定频率：50/60Hz
额定电流：0.5A
生产日期：请见产品底部
产地：中国江苏苏州



飞利浦家电（中国）投资有限公司
上海市静安区灵石路728弄20号201室
全国顾客服务热线：4008 800 008

本产品根据国标 GB4706.1-2005, GB4706.7-2014, GB4343.1-2018及 GB17625.1-2012制造

保留备用

发行日期: 14/7/2022