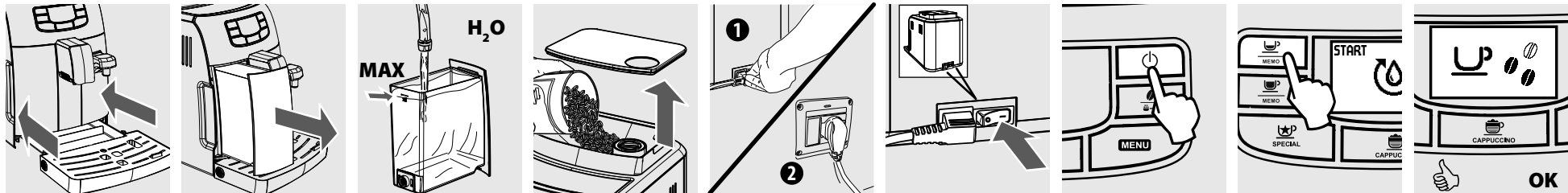


# Quick Start Guide Intelial One Touch Cappuccino - HD8753

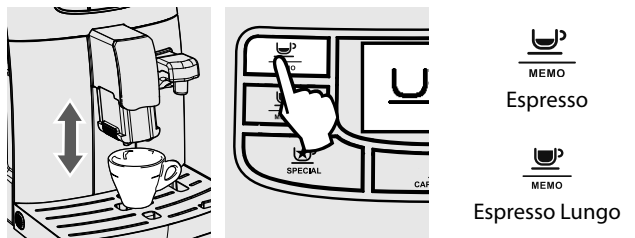
Register your product to receive tips and tricks and descaling reminder at [www.philips.com/welcome](http://www.philips.com/welcome)



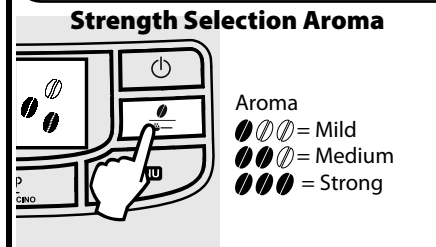
## FIRST INSTALLATION



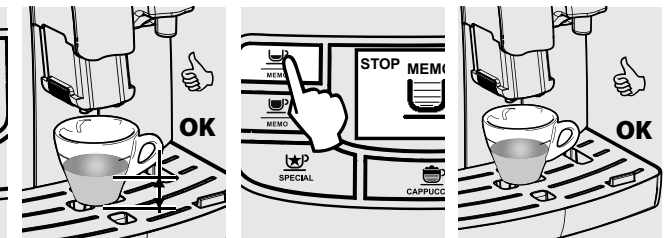
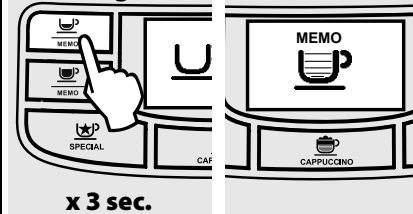
## FIRST ESPRESSO



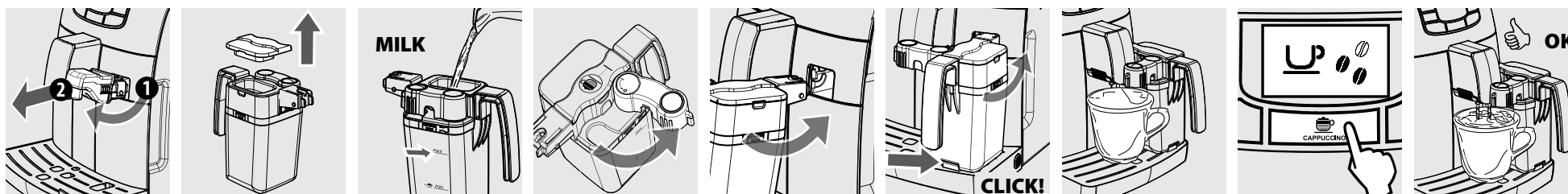
## "MY" ESPRESSO



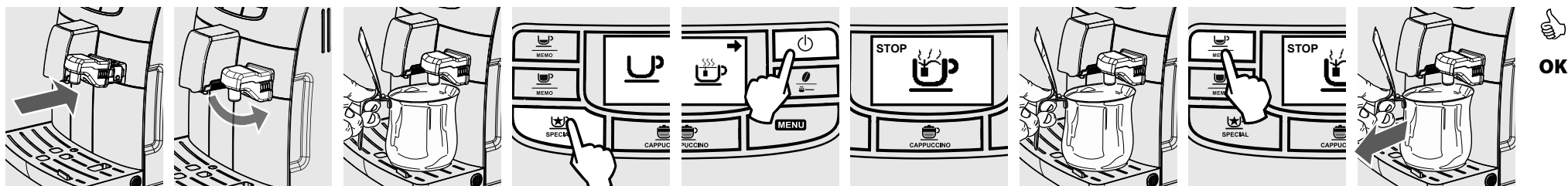
## Length Selection: MEMO



## FIRST CAPPUCCINO



## HOT WATER



Please refer to user manual for more informations or go to [www.philips.com/support](http://www.philips.com/support)

# Quick Start Guide Intelial One Touch Cappuccino - HD8753



## DESCALING - 30 min.

### Keep the machine at its best

The advanced electronics tells you on the display of the machine (in clear symbols) when descaling is needed.

커피 머신을 최상의 상태로 유지하십시오. 고급 전자 기술이 적용되어 있어 스케일 제거가 필요하면 커피 머신의 디스플레이에 이를 알려 주는 기호가 선명하게 나타납니다.

请把咖啡机保持在最佳状态。因采用先进电子技术，需要除垢时在咖啡机的显示板上会出现明确的符号。

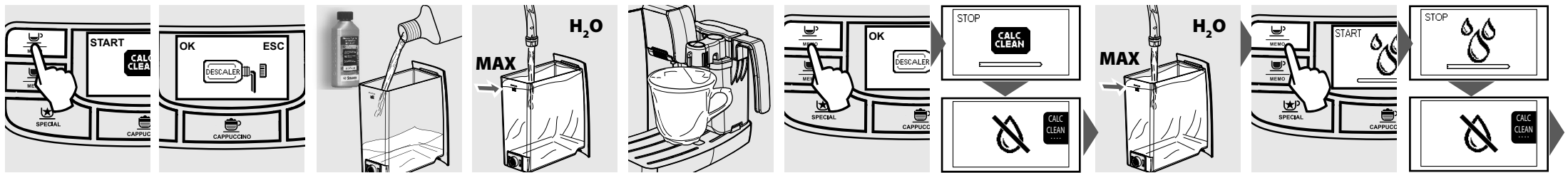
請把咖啡機保持在最佳狀態。因採用先進電子技術，需要除垢時在咖啡機之顯示板上會出現明確符號。

如果不定期除垢，機器將停止工作。這不屬於免費保修範圍。

如果不定期除垢，機器將停止工作。這不屬於免費保修範圍。

If you don't descale regularly, your appliance will ultimately stop working. This is not covered by your warranty.

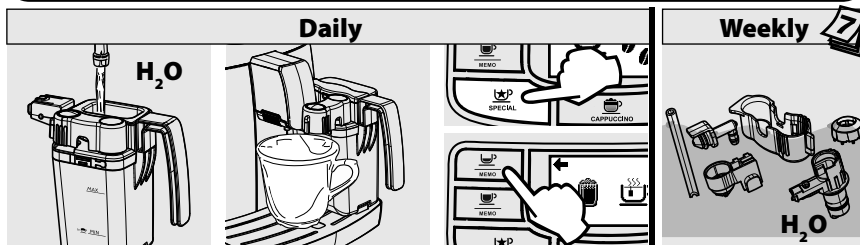
정기적으로 스케일 제거를 하지 않으면 기기가 작동하지 않게 될 수 있습니다. 이 경우에는 보증이 적용되지 않습니다.



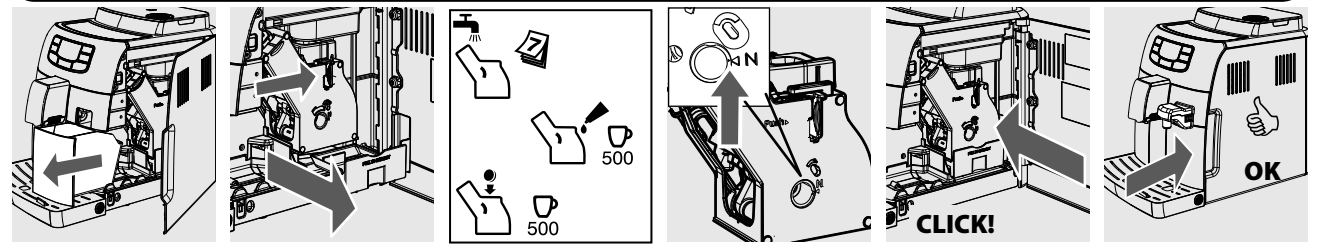
## MENU FOR CUSTOMIZATION AND MAINTENANCE

<b>Coffee Temperature</b>	<b>Stand-by time set</b>	<b>Display contrast</b>	<b>Water hardness</b>	<b>Water filter "INTENZA+"</b>	<b>Descaling Menu</b>	<b>Default setting machine</b>				

## MILK CARAFE CLEANING



## BREWING UNIT CLEANING



For more information on installation or usage please contact the Philips consumer care help line :

China: 4008 800 008  
Taiwan: 0800 231099  
Korea: 080-600 6600 (toll free)

For other phone numbers, please refer to the Warranty booklet or go to [www.philips.com/support](http://www.philips.com/support)