

Loki DI India

90x127mm

Connectivity

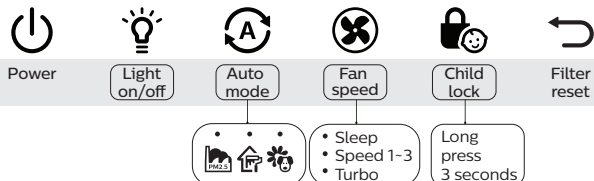


You can use the app to control the purifier and check air quality. Download and install the Philips app

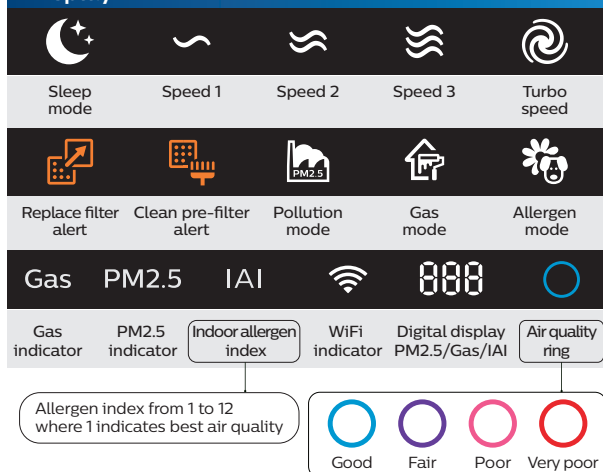
Clean Home+

Open the app and click on "Connect a New Device" or press the "+" button to connect your device. Please follow the steps in the app.

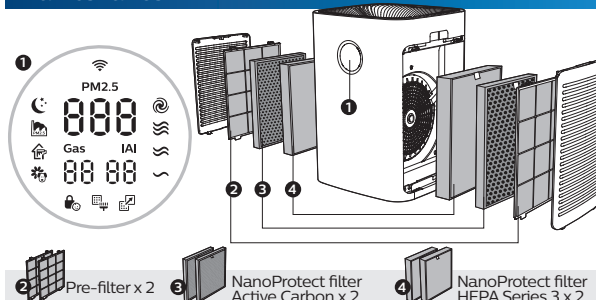
Control



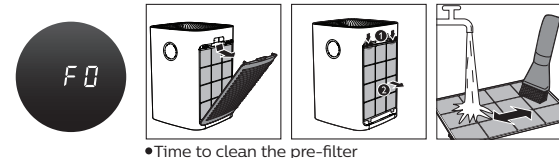
Display



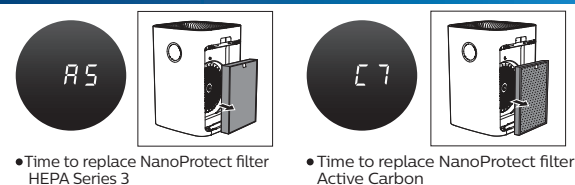
Maintenance



When display shows F0



When display shows A5/C7



! Press for 3 seconds to reset after cleaning or replacing accessory

The filter may produce smell after being used for a while because of the absorption of indoor air. Remove the filter and place it where it has direct sunlight and ventilation for several hours. Re-install and try using it again. If the odor remains, please replace the filter.

4241 211 04463