

PHILIPS
AC0819



EN User manual 3

ZH-S 用户手册 15



Contents

1	Important	4
	Safety	4
2	Your air purifier	6
	Product Overview	6
	Controls overview	7
3	Using the air purifier	7
	Understanding the air quality light	7
	Installing the filter	8
	Connecting power	8
	Turning on and off	8
	Changing the mode setting	9
4	Cleaning	9
	Cleaning schedule	9
	Cleaning the body of the air purifier	10
	Cleaning the air quality sensor	10
	Cleaning the surface of the filter	10
5	Replacing the filter	11
	Understanding the healthy air protect lock	11
	Replacing the filter	11
	Filter reset	12
6	Storage	12
7	Troubleshooting	12
8	Guarantee and service	14
	Order parts or accessories	14
9	Notices	14
	Electromagnetic fields (EMF)	14
	Recycling	14

1 Important

Safety

Read this user manual carefully before you use the appliance, and save it for future reference.

Danger

- Do not clean the appliance with water, any other liquid, or a (flammable) detergent to avoid electric shock and/or a fire hazard.
- Do not spray any flammable materials such as insecticides or fragrance around the appliance.

Warning

- Check if the voltage indicated on the appliance corresponds to the local power voltage before you connect the appliance.
- If the power cord is damaged, you must have it replaced by Philips, a service center authorized by Philips, or similarly qualified persons in order to avoid a hazard.
- Do not use the appliance if the adaptor, the power cord, or the appliance itself is damaged.
- Only use the approved 2-pin plug adapter (KA1801A-2400750CN) provided with the appliance.
- This appliance can be used by children aged from 8 years and above and persons with reduced physical, sensory or mental capabilities or lack of experience and knowledge if they have been given supervision or instruction concerning use of the appliance in a safe way and understand the hazards involved. Child shall not play with the appliance. Cleaning and maintenance shall not be made by children without supervision.
- Do not block the air inlet and outlet.
- Do not place any items on top of the air outlet, or in front of the air inlet.
- Make sure that foreign objects do not fall into the appliance through the air outlet.

Caution

- This appliance is not a substitute for proper ventilation, regular vacuum cleaning, or use of an extractor hood or fan while cooking.
- Always place and use the appliance on a dry, stable, level, and horizontal surface.
- Leave at least 20cm free space around the appliance and leave at least 30cm free space above the appliance.
- Do not sit or stand on the appliance. Do not place anything on top of the appliance.
- Do not place the appliance directly below an air conditioner to prevent condensation from dripping onto the appliance.
- Only use the original Philips filters specially intended for this appliance. Do not use any other filters.
- Combustion of the filter may cause irreversible human hazard and/or jeopardize other lives. Do not use the filter as fuel or for similar purpose.
- Avoid knocking against the appliance (the air inlet and outlet in particular) with hard objects.
- Do not insert your fingers or objects into the air outlet or the air inlet to prevent physical injury or malfunctioning of the appliance.
- Do not use this appliance when you have used indoor smoke-type insect repellents or in places with oily residues, burning incense, or chemical fumes.
- Do not use the appliance near gas appliances, heating devices or fireplaces.
- Always turn off the air purifier first, then unplug adapter from wall outlet, when you want to moving, cleaning appliance, replacing the filters or carry out other maintenance.
- The appliance is only intended for household use under normal operating conditions.
- Do not use the appliance in wet surroundings or in surroundings with high ambient temperatures, such as the bathroom, toilet, or kitchen, or in a room with major temperature changes.

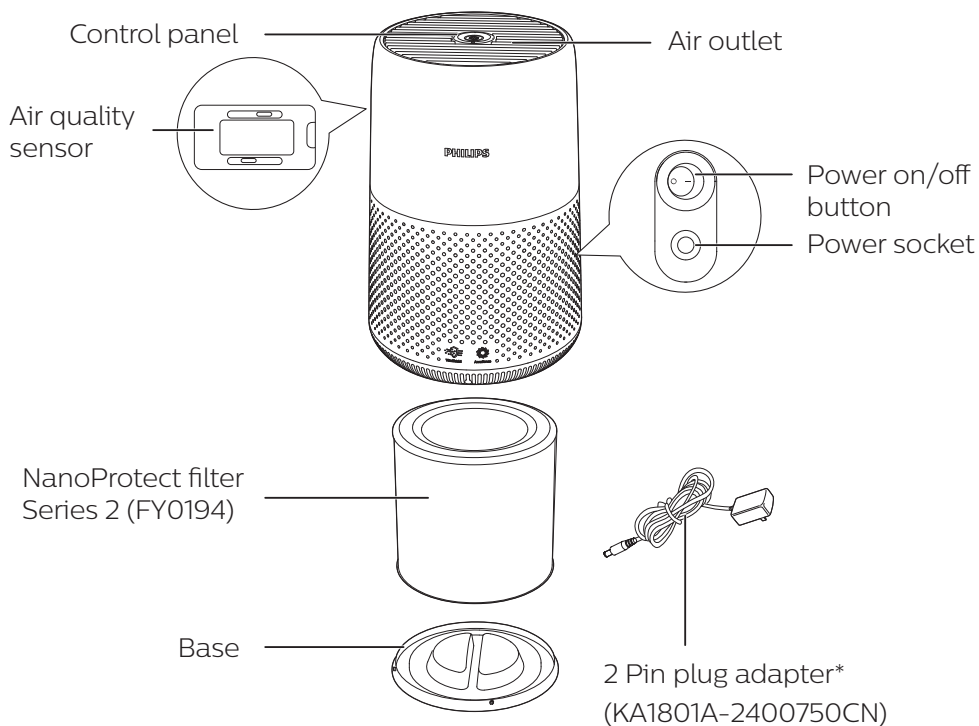
- The appliance does not remove carbon monoxide (CO) or radon (Rn). It cannot be used as a safety device in case of accidents with combustion processes and hazardous chemicals.

2 Your air purifier

Congratulations on your purchase, and welcome to Philips!

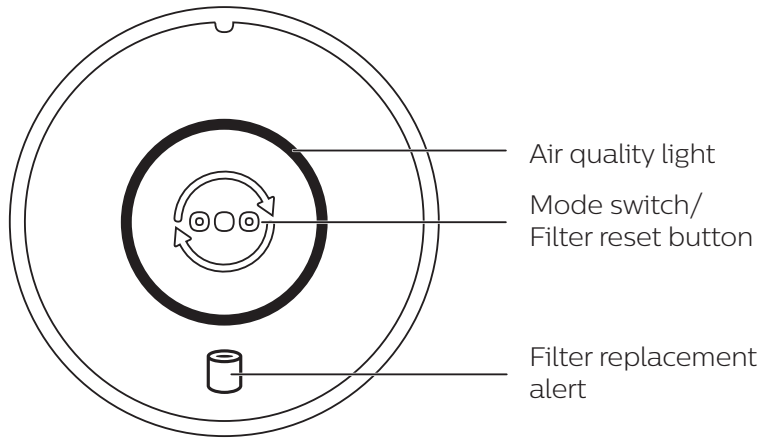
To fully benefit from the support that Philips offers, register your product at www.philips.com/welcome.

Product Overview



*Please use only the 2 pin plug adapter provided.

Controls overview



3 Using the air purifier

Understanding the air quality light

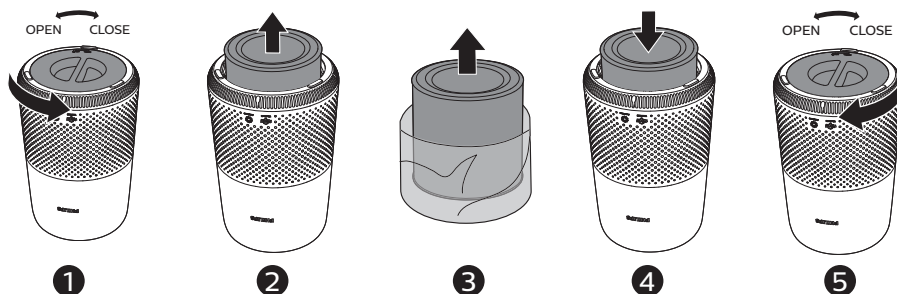
The color of air quality light corresponds to the ambient air quality.
The brightness of air quality light reflects the current running mode.

PM2.5 level	Air quality light color	Air quality level
≤35	Blue	Good
36-75	Blue-purple	Fair
76-115	Purple-red	Poor
>115	Red	Very poor

Installing the filter

Remove all packaging of the filter before use.

Note: Make sure the air purifier is unplugged from the electrical outlet before installing the filter.



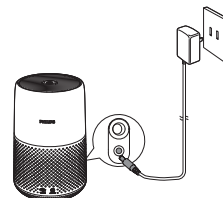
- 1 Rotate the base anti-clockwise to remove it from the appliance.
- 2 Pull the filter out from the appliance.
- 3 Remove all packaging materials of the air purification filter.
- 4 Put the filter back into the appliance.
- 5 Reattach the base and rotate it clockwise to fasten the base.

Connecting power

Note: Risk of electric shock! When you unplug the AC power cord, always pull the plug from the socket. Never pull the cord.



Connect the power adapter to:

- First, the power socket on the appliance.
- Then, the wall outlet.




Turning on and off

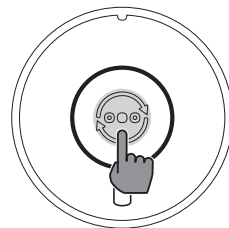
Note:

- For optimum purification performance, close doors and windows.
- 1 Press the power button  on the back of the air purifier to switch on.
↳ The air purifier operates in the auto mode by default.
 - 2 Press the power  button again to switch off the air purifier.

Changing the mode setting

You can choose Auto mode, Turbo mode or the Sleep mode by pressing the mode switch button . The brightness of air quality light reflects the current running mode:

- Sleep mode-lowest brightness
- Auto mode-mid level brightness
- Turbo mode-highest level brightness



Auto mode

In Auto mode, the appliance selects the fan speed in accordance with the ambient air quality.

Turbo mode

In Turbo mode, the air purifier operates on the highest speed.

Sleep mode

In Sleep mode, the air purifier operates quietly at a low speed.

4 Cleaning

Note:

- Never use abrasive, aggressive, or flammable cleaning agents such as bleach or alcohol to clean any part of the appliance.

Cleaning schedule

Frequency	Cleaning method
When necessary	Wipe the surface of the appliance with a soft dry cloth
	Clean the air outlet cover
Every two months	Clean the air quality sensor with a dry cotton swab
Every four weeks	Clean the surface of the filter

Cleaning the body of the air purifier

Regularly clean the inside and outside of the air purifier to prevent dust from collecting.

- 1 Use a soft, dry cloth to clean both the interior and exterior of the air purifier.
- 2 The air outlet can also be cleaned with a dry, soft cloth.

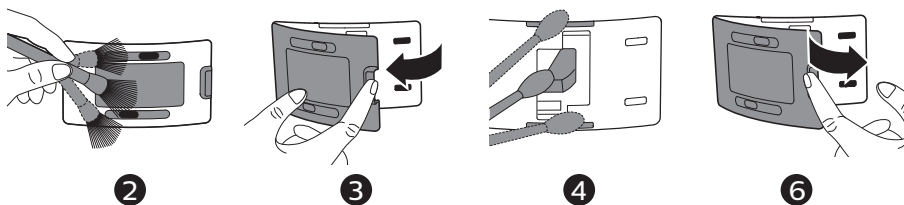
Cleaning the air quality sensor

Clean the air quality sensor every two months for optimal functioning of the appliance.

Note:

- If the air purifier is used in a dusty environment, it may need to be cleaned more often.
- If the humidity level in the room is very high, condensation may develop on the air quality sensor and the air quality light may indicate a poorer air quality even though the air quality is actually good. If this occurs, clean the air quality sensor or use the air purifier on a manual speed setting.

- 1 Switch off the air purifier and unplug from the power socket.



- 2 Clean the inlet and outlet of the air quality sensor with a soft brush.
- 3 Open the air quality sensor cover.
- 4 Clean the air quality sensor, the dust inlet and the dust outlet with a damp cotton swab.
- 5 Dry all parts thoroughly with a dry cotton swab.
- 6 Reattach the air quality sensor cover.

Cleaning the surface of the filter

Wipe the surface of the filter with soft wet cloth or clean the surface of the filter with a vacuum cleaner.

Note:

- if you use a high power/ industrial vacuum cleaner, it may damage the filter.



5 Replacing the filter

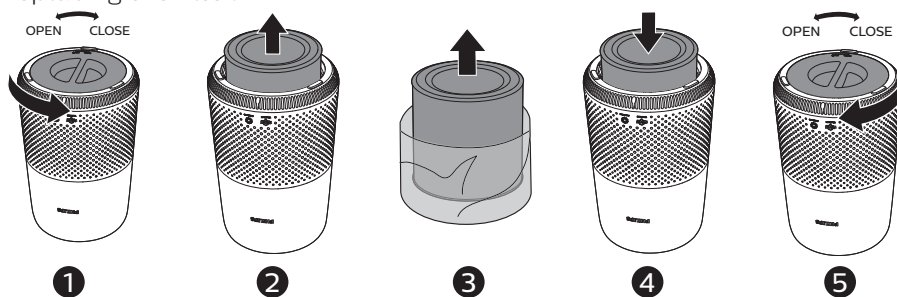
Understanding the healthy air protect lock

This appliance is equipped with the healthy air protect lock to make sure that the NanoProtect filter is in optimal condition when the appliance is operating. When the filter is almost expired, the filter replacement alert (🗑️) lights up red, which indicates that it needs to be replaced. If you do not replace the filter in time, the filter replacement alert (🗑️) will flash. The appliance will stop operating and get locked.

Replacing the filter


Note:



- The filter is not washable or reusable.
- Always turn off the air purifier and unplug from the electrical outlet before replacing the filter.



- 1 Rotate the base anti-clockwise to remove it from the appliance.
- 2 Pull the filter out from the appliance. Discard the used filter.
- 3 Remove all packaging materials of the new filter.
- 4 Put the filter into the appliance.
- 5 Reattach the base and rotate it clockwise to fasten the base.
- 6 Put the plug of the air purifier in the power socket.
- 7 Press the power (🔌) button to switch on the appliance.
- 8 Press and hold (🗑️) for 3 seconds to reset the filter lifetime counter.
- 9 Wash your hands thoroughly after replacing the filter.

Filter reset

You can replace the filter even before filter replacement alert () displays on the screen. After replacing a filter, you need to reset the filter lifetime counter manually.

- 1 Press the power button  to turn on the appliance.
- 2 Within 10 seconds after power on, press and hold the mode switch button  for 5 seconds to reset the filter lifetime counter.



6 Storage

- 1 Turn off the air purifier and unplug from the power socket.
- 2 Clean the air purifier, air quality sensor and the surface of the filter (see chapter "Cleaning").
- 3 Let all parts air dry thoroughly before storing.
- 4 Wrap the filter in air tight plastic bags.
- 5 Store the air purifier, filter in a cool, dry location.
- 6 Always thoroughly wash hands after handling a filter.

7 Troubleshooting

This chapter summarizes the most common problems you could encounter with the appliance. If you are unable to solve the problem with the information below, contact the Consumer Care Center in your country.

Problem	Possible solution
The appliance does not work even though it is plugged in.	<ul style="list-style-type: none">• The filter replacement alert is on but you have not replaced the corresponding filter. As a result, the appliance is now locked. In this case, replace the filter and reset the filter lifetime counter.
The airflow that comes out of the air outlet is significantly weaker than before.	<ul style="list-style-type: none">• The surface of the filter is dirty. Clean the surface of the filter (see the chapter "Cleaning").

Problem	Possible solution
The air quality does not improve, even though the appliance has been operating for a long time.	<ul style="list-style-type: none"> • Check if the packing material is removed from the filter. • Make sure that the filter is properly installed. • The air quality sensor is dirty or wet. Clean the air quality sensor (See the chapter "Cleaning"). • Room size is large or the outdoor air quality is poor. For optimum purification performance, please close the doors and windows when operating the air purifier. • There are indoor pollution resources. For instances, smoking, cooking, incense. • Filter reaches the end of life. Replace the filter with a new one.
The appliance produces a strange smell.	<ul style="list-style-type: none"> • The first few times you use the appliance, it may produce a plastic smell. This is normal. However, if the appliance produces a burnt smell even if removing the filter, contact your Philips dealer or an authorized Philips service center. The filter may produce smell after being used for a while because of the absorption of indoor gases. It's recommended that you reactivate the filter by putting it in direct sunlight for repeated use. If odor still exists, replace the filter.
The appliance is extra loud.	<ul style="list-style-type: none"> • Check if the packing of the filter is removed. • The appliance will run in high speed when the air quality is poor, which will causes higher noises. When using the appliance in a bedroom at night, choose the Sleep speed. • if anything drops into air outlet, it may also cause abnormal loud sounds. Immediate turn off appliance, turn appliance upside down, to get foreign objectives out of appliance.
The appliance still indicates that I need to replace a filter, but I already did.	<ul style="list-style-type: none"> • Perhaps you did not reset the filter lifetime counter. Switch on the appliance. Then press and hold the mode switch button () for 3 seconds until  disappears.
Appliance keeps off, but air quality light blinks for one minute.	<ul style="list-style-type: none"> • The appliance has malfunctions. Contact the Consumer Care Center in your country.

8 Guarantee and service

If you need information or if you have a problem, please visit the Philips website at www.philips.com or contact the Philips Consumer Care Center in your country (you can find its phone number in the worldwide guarantee leaflet). If there is no Consumer Care Center in your country, go to your local Philips dealer.

Order parts or accessories

If you have to replace a part or want to purchase an additional part, go to your Philips dealer or visit www.philips.com/support.

If you have problems obtaining the parts, please contact the Philips Consumer Care Center in your country (you can find its phone number in the worldwide guarantee leaflet).

9 Notices

Electromagnetic fields (EMF)

This Philips appliance complies with all applicable standards and regulations regarding exposure to electromagnetic fields.

Recycling

Do not throw away the product with the normal household waste at the end of its life, but hand it in at an official collection point for recycling. By doing this, you help to preserve the environment.

Follow your country's rules for the separate collection of electrical and electronic products. Correct disposal helps prevent negative consequences for the environment and human health.

目录

1	重要事项	16
	安全	16
2	您的空气净化器	18
	产品概述	18
	控件概述	19
3	使用空气净化器	19
	了解空气质量指示灯	19
	安装过滤网	20
	连接电源	20
	打开和关闭	20
	更改模式设置	21
4	清洁	21
	清洁计划	21
	清洁空气净化器的机身	22
	清洁空气质量传感器	22
	清洁滤网表面	22
5	更换滤网	23
	了解健康空气智能锁	23
	更换过滤器	23
	过滤网重置	24
6	存放	24
7	故障排除	24
8	保修与服务	25
	订购部件或附件	25
9	声明	26
	电磁场 (EMF)	26
	回收	26

1 重要事项

安全

使用本产品之前，请仔细阅读本用户手册，并妥善保管以备日后参考。

危险

- 请勿用水或任何其他液体或（易燃性）清洁剂来清洁产品，以免发生触电和/或火灾。
- 切勿在产品周围喷洒杀虫剂或香水等任何可燃材料。

警告

- 在将产品连接电源之前，请先检查产品所标电压与当地的供电电压是否相符。
- 如果电源线损坏，为避免危险，必须由飞利浦、飞利浦授权的服务中心或类似的专职人员来更换。
- 如果适配器、电源线或产品本身受损，请勿使用本产品。
- 仅使用产品随附的经批准的 2 针 插头适配器 (KA1801A-2400750CN)。
- 本产品适合由 8 岁及以上年龄的儿童以及肢体不健全、感觉或精神上有障碍或缺乏相关经验和知识的人士使用，但前提是有人对他们使用本产品进行监督或指导，以确保他们安全使用，并且让他们明白相关的危害。不得让儿童玩耍本产品。请勿让儿童在无人监督的情况下清洁和保养产品。
- 请勿堵塞进风口和出风口。
- 请勿在出风口顶部或进风口前面放置任何物品。
- 确保异物未通过出风口进入产品内部。

警告

- 本产品不能替代正常通风、日常吸尘或者在烹饪时使用的抽油烟机。
- 一定要在干燥、稳固、平整且水平的表面上放置和使用本产品。
- 产品周围要留出至少 20 厘米的空间，产品上方至少要留出 30 厘米的空间。
- 请勿坐在或站在产品上面。切勿在本产品上放置任何物品。
- 切勿将产品直接放在空调下方，以防冷凝水滴到产品中。
- 只能使用飞利浦专门为本产品设计的原装过滤网。切勿使用任何其他其它过滤网。
- 燃烧滤网可能会造成不可逆转的人体危害和/或危及他人生命安全。请勿将滤网用作燃料或类似用途。
- 请勿用硬物敲击本产品（尤其是进风口和出风口）。
- 请勿将手指或物体插入出风口或进风口，以防止产品出现物理损坏或发生故障。
- 当您使用室内喷雾式驱虫剂或在充满油污、易燃气体或化学烟雾的地方时，请勿使用本产品。
- 请勿在气体用具、加热装置或火炉附近使用本产品。
- 当您要移动、清洁产品、更换滤网或执行其他维护时，请务必先关闭空气净化器，然后再从电源插座上拔下适配器。
- 本产品仅限于家用并在正常运行条件下使用。
- 请勿在潮湿或高温环境下（例如浴室、卫生间或厨房）或在温度变化较大的房间内使用本产品。
- 本产品不能去除一氧化碳 (CO) 或氡 (Rn)。因此在发生燃烧和危险化学品事故时，其不能作为安全设备使用。

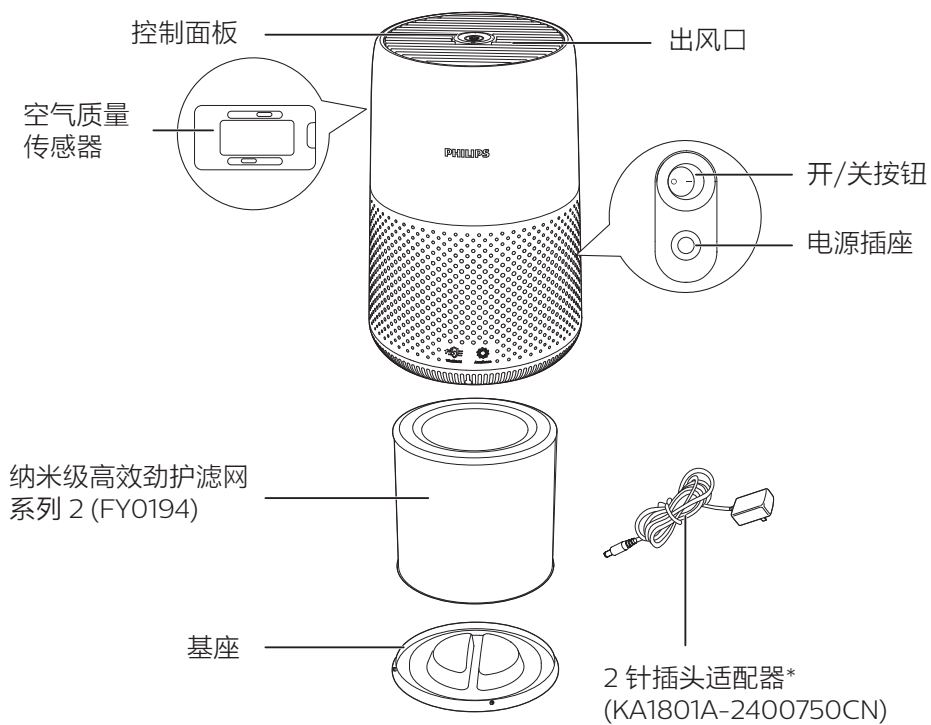
2 您的空气净化器

感谢您的惠顾，欢迎光临飞利浦！

为了您能充分享受飞利浦提供的支持，请在以下网站注册您的产品：

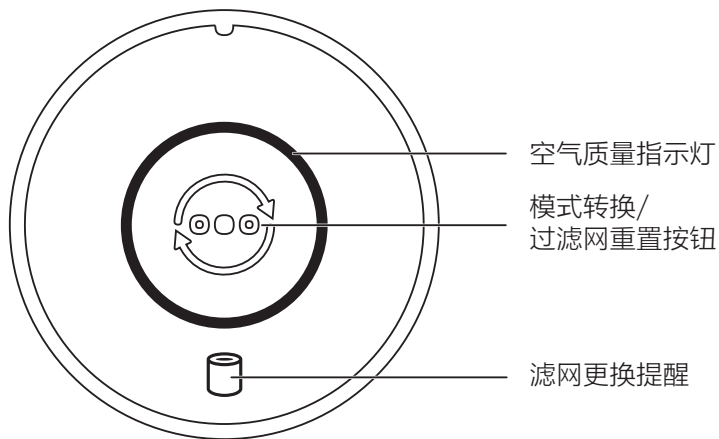
www.philips.com/welcome。

产品概述



*请仅使用随附的 2 针插头适配器。

控件概述



3 使用空气净化器

了解空气质量指示灯

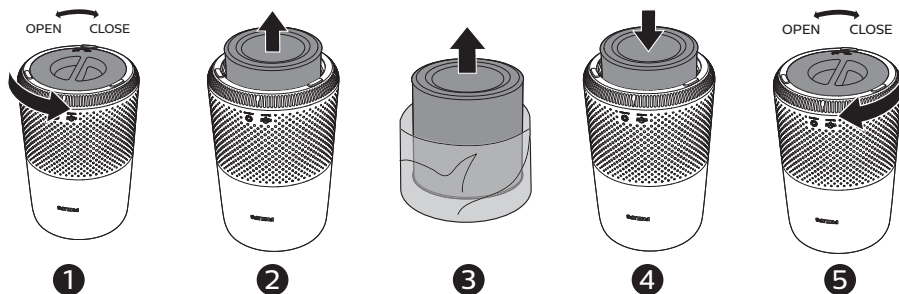
空气质量指示灯的颜色与环境空气质量相对应。
空气质量指示灯的亮度反映当前运行模式。

PM2.5 水平	空气质量指示灯颜色	空气质量级别
≤35	蓝色	好
36 - 75	蓝紫色	一般
76 - 115	紫红色	较差
>115	红色	很差

安装过滤网

使用滤网之前，先拆掉其所有包装。

注意：确保先从电源插座上拔下空气净化器的插头，然后再安装滤网。



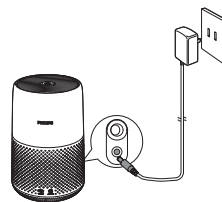
- 1 逆时针旋转底座以将其从产品中取出。
- 2 从产品中拉出滤网。
- 3 拆掉空气净化滤网的所有包装材料。
- 4 把过滤网放回产品内。
- 5 重新安装底座并顺时针旋转以将其固定。

连接电源

注意：存在触电危险！拔下交流电源线时，务必先将插头从电源插座中拔出。切勿拉扯电源线。



将电源适配器连接至：

- 首先连接至产品上的电源插孔。
- 然后连接至电源插座。




打开和关闭

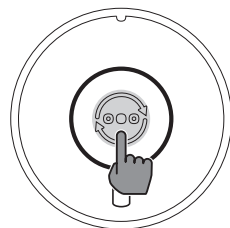
注意：

- 为了获得出色的净化性能，请关闭门窗。
- 1 按空气净化器背面的电源按钮  以将其打开。
↳ 默认情况下，空气净化器将在自动模式下运行。
 - 2 再次按电源  按钮以关闭空气净化器。

更改模式设置

您可以按模式转换按钮  选择自动模式、快速模式或夜间模式。空气质量指示灯的亮度反映当前运行模式：

- 夜间模式 - 最低亮度
- 自动模式 - 中等亮度
- 快速模式 - 最高亮度



自动模式

在自动模式下，产品会根据环境空气质量选择风速。

快速模式

在快速模式下，空气净化器会以最高速度运行。

夜间模式

在睡眠模式下，空气净化器将以低速安静地运行。

4 清洁

注意：

- 切勿使用研磨性、腐蚀性或易燃性清洁剂（例如漂白剂或酒精）清洁本产品的任何部件。

清洁计划

频率	清洁方法
必要时	使用干软布擦拭产品表面
	清洁出风口盖
每两个月	使用干棉签清洁空气质量传感器
每 4 周	清洁滤网表面

清洁空气净化器的机身

定期清洁空气净化器的内侧和外侧，以防止灰尘积聚。

- 1 使用柔软的干布清洁空气净化器的内部和外部。
- 2 出风口也可用柔软的干布进行清洁。

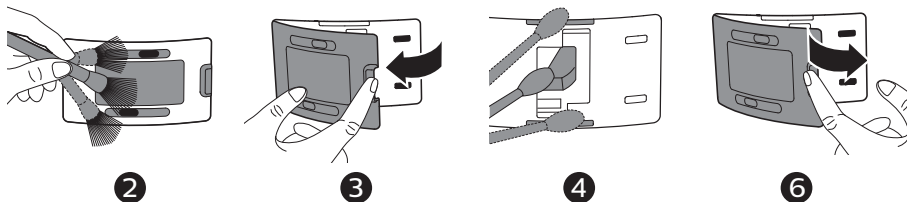
清洁空气质量传感器

每 2 个月清洁一次空气质量传感器，确保产品以出色性能运行。

注意：

- 如果将空气净化器用于多尘环境，则可能需要更频繁地进行清洁。
- 如果室内的湿度很高，则空气质量传感器上可能会形成冷凝水，即使空气质量确实很好，空气质量指示灯也可能会指示空气质量较差。如出现此情况，请清洁空气质量传感器或以手动速度设置使用空气净化器。

- 1 关闭空气净化器，从电源插座上拔下插头。



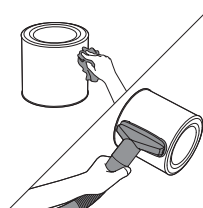
- 2 使用软刷清洁空气质量传感器的进风口和出风口。
- 3 打开空气质量传感器保护盖。
- 4 使用湿棉签清洁空气质量传感器、进风口和出风口。
- 5 使用干棉签彻底擦干所有部件。
- 6 重新装上空气质量感应器的保护盖。

清洁滤网表面

用柔软湿布擦拭滤网表面，或用吸尘器清洁滤网表面。



注意：

- 如果使用高功率/工业吸尘器，则可能会损坏滤网。



5 更换滤网

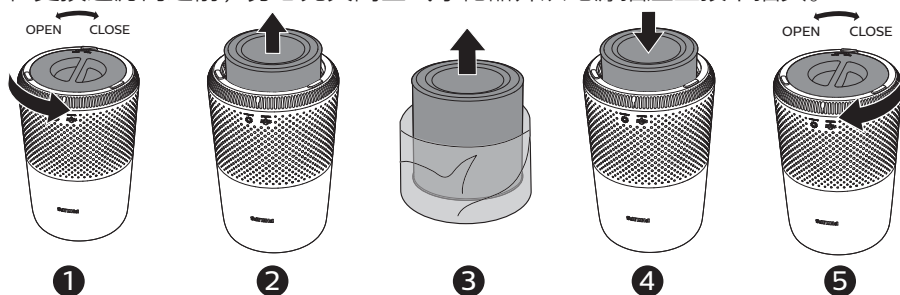
了解健康空气智能锁



本产品具有健康空气智能锁，旨在确保产品运行过程中，纳米级高效劲护滤网在出色条件下工作。当滤网快要失效时，滤网更换提醒指示灯 () 将呈红色亮起，指示需要更换滤网。如果没有及时更换滤网，则滤网更换提醒指示灯 () 会闪烁。产品将停止运行并且锁定。

更换过滤器

注意：

- 滤网不可水洗，也不可重复使用。
- 在更换过滤器之前，务必先关闭空气净化器并从电源插座上拔下插头。



- 1 逆时针旋转底座以将其从产品中取出。
- 2 从产品中拉出滤网。丢弃旧滤网。
- 3 拆掉新过滤网的所有包装材料。
- 4 将滤网装入产品中。
- 5 重新安装底座并顺时针旋转以将其固定。
- 6 将空气净化器的插头插入电源插座。
- 7 按电源  按钮 启动产品。
- 8 按住  3 秒可重置滤网使用寿命计数器。
- 9 更换滤网后，彻底清洗双手。

过滤网重置

在屏幕上显示过滤网更换提醒(🕒)之前，您也可以更换过滤器。在更换过滤网后，您需要手动重置过滤网使用寿命计数器。

- 1 按电源按钮(🔌)以打开产品。
- 2 通电后 10 秒内，按住模式转换按钮(🔄) 5 秒钟可重置滤网使用寿命计数器。



6 存放

- 1 关闭空气净化器，从电源插座上拔下插头。
- 2 清洁空气净化器、空气质量传感器和滤网表面（请参阅“清洁”一章）。
- 3 待所有部件完全晾干后再进行存放。
- 4 将滤网装入密封的塑料袋中。
- 5 将空气净化器和滤网存放在阴凉干燥处。
- 6 拆装滤网后，务必彻底洗净双手。

7 故障排除

本章归纳了您在使用本产品时常常遇到的问题。如果您无法根据下面的信息解决问题，请与您所在国家/地区的客户服务中心联系。

问题	可能的解决方法
产品即使接通电源也无法工作。	<ul style="list-style-type: none">• 滤网更换提醒指示灯亮起，但您未更换相应的滤网。结果是本产品现在已被锁定。在此情况下，更换过滤网并重置过滤网使用寿命计数器。
出风口排出的气流比之前明显减弱。	<ul style="list-style-type: none">• 滤网表面变脏。清洁滤网表面（请参阅“清洁”一章）。
即使在产品已经运行很长时间以后，空气质量也未见显著改善。	<ul style="list-style-type: none">• 检查滤网包装材料是否已去除。• 确保已正确安装滤网。• 空气质量传感器变脏或湿了。清洁空气质量传感器（请参阅“清洁”一章）。• 房间面积较大或室外空气质量较差。为了获得理想的净化性能，请在使用空气净化器时关闭门窗。• 室内污染源形式各异。例如，吸烟、烹饪、熏香。• 过滤网达到了使用寿命的终点。换用新过滤网。

问题	可能的解决方法
产品散发出一种奇怪的味道。	<ul style="list-style-type: none"> 前几次使用产品时，其可能会产生塑料味。这是正常的。但是，如果产品在取出过滤网后依然发出烧焦的气味，请联系飞利浦经销商或经授权的飞利浦服务中心。由于吸收室内气体，该过滤网可能会在使用后发出气味。过滤网经过日晒之后即可重复使用，建议您采用这种方式再次激活过滤网。如果异味仍然存在，建议更换过滤网。
产品声音过大。	<ul style="list-style-type: none"> 检查滤网的包装是否已去除。 当空气质量差时，产品将高速运行，这会产生较高噪音。当夜间在卧室使用本产品时，可选择夜间低速。 如果有异物进入出风口，则可能还会导致较大的异响。请立即关闭产品，倒置产品，以从产品中清除异物。
我已经更换了过滤网，但是产品还是一直指示需要更换滤网。	<ul style="list-style-type: none"> 可能是您未重置滤网使用寿命计数器。启动产品。然后，按住模式转换按钮 () 3 秒钟，直至  消失。
产品保持关闭状态，但空气质量指示灯会闪烁 1 分钟。	<ul style="list-style-type: none"> 产品出现故障。请与您所在国家/地区的客户服务中心联系。

8 保修与服务

如果需要信息或有任何疑问，请访问飞利浦网站：www.philips.com 请联系您所在国家/地区的飞利浦客户服务中心（可在全球保修卡中找到飞利浦客户服务中心的电话号码）。如果您所在的国家/地区没有飞利浦客户服务中心，请向当地的飞利浦经销商求助。

订购部件或附件

如果您必须更换部件或需要购买额外的部件，请转到您的飞利浦经销商或访问 www.philips.com/support。

如果获取部件有问题，请与您所在国家/地区的飞利浦客户服务中心联系（可在全球保修卡中找到其电话号码）。

9 声明

电磁场 (EMF)

本飞利浦产品符合所有有关暴露于电磁场的适用标准和法规。

回收

弃置产品时，请不要将它与一般生活垃圾一同丢弃，应将其交给官方指定的回收中心。这样做有利于环保。

请遵循您所在国家/地区的电器及电子产品分类回收规定。正确弃置本产品有助于避免对环境和人类健康造成负面影响。

PHILIPS

产品保用卡

保修及服务：

此产品是一件设计精良，用高品质元件制造之家用电器，在正常使用及保养下应能发挥其优越性能。在购买日期后二年内，若发生任何因制造工艺或元器件造成之损坏，飞利浦中国维修服务中心将为持证用户提供免费门市维修服务，视情况更换零件或整个产品。无论在保期中或保期后，只要飞利浦正式行销该产品的任何国家皆可获得维修服务。若飞利浦在当地无行销该项产品，飞利浦同样提供维修服务，但可能因未储备所需零件，维修时间可能较长，敬请见谅。请联络当地飞利浦经销商，或飞利浦服务部门。若您需洽询相关资讯，或遇困难事项时，请联络当地飞利浦维修服务中心，或向飞利浦服务热线咨询。

中国顾客服务热线：
4008 800 008（用户需承担本地通话费）。
网址：www.philips.com.cn

网上会员注册与产品注册：

- 1 登陆 www.philips.com.cn/welcome
- 2 点击“创建新账户”，创建您的飞利浦账号
- 3 点击“注册产品”，通过产品名称或产品型号查找产品，完成产品注册

保修条例：

- 在购买日期后二年内，凡经本公司特约维修站人员确认为正常使用情况下，因制造工艺或元器件造成之损坏，您都将获得免费保修服务。
- 此免费服务不包括需时常更换的易耗零配件（吸尘机纸袋，布袋，空气清新机滤网，滤芯，活性炭，咖啡壶过滤网）及附件（如须刀网膜、刀头，咖啡杯，食品加工机杯/刀具等），辅助装置，运输费及维修人员上门服务费。
- 用户请保留此联。
- 此证若经涂改即作废。

- 此证须联同发票正本使用方为有效。
- 以下情况将不能获得免费服务。
 - 1 使用不当引起的人为损坏，例如接入不适当电源、使用不适当配件、不适当之安装、不依说明书使用、错误使用或疏忽而造成损坏等。因运输及其他意外而造成之损坏。非经本公司认可之维修和改装。其他因不可抗力（如自然灾害、电压异常等）造成的损坏。
 - 2 一般家庭以外使用（如工业、商业用）而造成的损坏。
 - 3 正常使用引起的产品老化、磨损等，但不影响产品的正常使用。
- 保修证作为在规定期限及条件之内进行免费维修的保证，并不限制消费者的法定权利。
- 飞利浦提供2年全球联保服务，在产品由飞利浦正式销售的所有国家中，都提供保修和保修期满的维修服务。要求保修时，您需提供发票正本，且请求保修的日期还在保修期限之内。

服务须知

需要此产品的售后服务，拨打服务热线：4008 800 008
在维修服务过程中有任何意见，欢迎致函飞利浦（中国）投资有限公司解决疑难。

飞利浦（中国）投资有限公司
上海市静安区灵石路718号A1幢

产品 : 飞利浦空气净化器 AC0819
型号 : KJ190G-X01
额定电压 : 100-240V~
额定频率 : 50/60Hz
额定输入功率 : 22W
生产日期 : 请见产品本体
产地 : 中国浙江宁波



飞利浦(中国)投资有限公司
上海市静安区灵石路718号A1幢
全国顾客服务热线: 4008 800 008

本产品根据国标 GB4706.1-2005,
GB4706.45-2008 制造

产品性能指标

目标污染物	洁净空气量 (CADR)	累计净化量 (CCM)	净化能效等级
颗粒物	190 m ³ /h	P2	高效级

噪声(声功率级)	60 dB (A)	适用面积*	13 - 22 m ²
----------	-----------	-------	------------------------

*适用面积是按照国标GB/T18801-2015根据颗粒物洁净空气量计算得出
以上性能指标数据是在第三方试验室按照国标GB/T18801-2015, 以特定的
烟尘颗粒物或气态污染物为目标污染物测试得出

能源效率标识见机身能效标识。

产品中有害物质的名称及含量

部件名称	有毒有害物质或元素					
	铅(Pb)	汞(Hg)	镉(Cd)	六价铬 (Cr(VI))	多溴联苯 (PBB)	多溴二苯醚 (PBDE)
电源适配器	×	○	○	○	○	○
电路板组件	×	○	○	○	○	○
电源开关	×	○	○	○	○	○
马达	×	○	○	○	○	○
<p>本表格依据SJ/T 11364的规定编制。</p> <p>○ 表示该有害物质在该部件所有均质材料中的含量均在GB/T 26572规定的限量要求以下。</p> <p>× 表示该有害物质至少在该部件的某一均质材料中的含量超出GB/T 26572规定的限量要求。</p>						

*该表格中所显示的“有害物质”在产品正常使用情况下不会对人身和环境产生任何伤害。

*该表格中所显示的“有害物质”及其存在的部件向消费者和回收处理从业者提供相关物质的存在信息，有助于产品废弃时的妥善处理。

出版日期：2020-05-26





© 2020 Koninklijke Philips N.V.
保留所有权利

3000 051 79692

