



Saeco Intuita HD8750

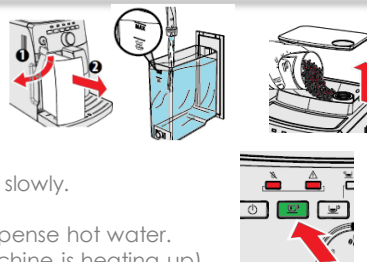
Product dimensions and information

- Product dimensions (L x D x H): 256 x 440 x 340 mm
- Coffee bean capacity: 300 gr
- Waste container capacity: 10 servings
- Water tank capacity: 1.5 l
- Maximum cup height: 152 mm
- Product weight: 8.0 kg

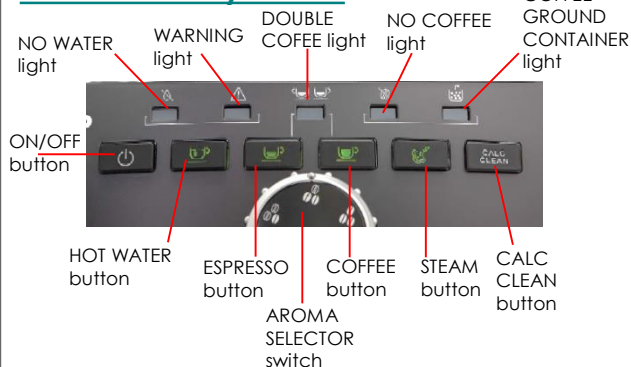
- Water pressure in pump: 15 bar
- Supported coffee types: Whole coffee beans
- Classic Milk Frother

First time use: Machine needs to be installed and primed.

1. Insert the drip tray.
2. Rinse and fill the water tank with fresh water up to the MAX level.
3. Pour coffee beans into the coffee bean hopper.
4. Insert the plug into the socket, the ON/OFF button starts to blink.
5. Press the ON/OFF button on the front to switch on the machine.
6. The NO WATER light + WARNING light + HOT WATER button start to blink slowly.
7. Place a container under the Classic Milk frother.
8. Press the HOT WATER button. The machine starts priming the circuit, dispense hot water.
9. When finished, the ESPRESSO and COFFEE button will start to blink. (machine is heating up).
10. Place the container under the dispensing spout, the machine will perform an automatic rinsing cycle.
11. Perform a manual rinse by brewing 3 times a coffee and after that dispense some hot water until the water tank is empty.



Buttons and symbols:



Machine Settings:

- Memo setting, cup volume.

Espresso and Coffee button can be adjusted and set to your preference.

1. Place a cup under the dispensing spout.
2. Press and hold the ESPRESSO/COFFEE button you want to adjust until the DOUBLE COFFEE light starts blinking, then release the button.
3. When the desired amount is reached, press again the same button you are adjusting to stop the dispensing. The volume is set.

- Grind settings:

The grinder can be set with the grinder adjustment key. There are 5 settings. Adjust while the machine is grinding.

1. Coarse grind: lighter taste, for dark roasted coffee blends
2. Fine grind: bolder taste, for light roasted coffee blends.



- Adjust the Aroma setting:

With the Aroma selector you can choose three types of aroma by turning the knob.



- Brew 2 cups:

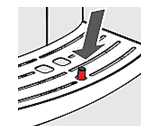
Press the ESPRESSO or COFFEE button twice consecutively.

The DOUBLE COFFEE light turns on and the machine will start to grind the beans and brew first one coffee. Then it will again grind beans and brew the second coffee.

Cleaning and Maintenance:

- Empty drip tray:

Empty and clean the drip tray each time the 'drip tray full' indicator pops up through the drip tray cover.



- Empty Coffee ground container:

Always empty the container when the machine is switched ON and when the COFFEE GROUND CONTAINER light is steady ON.



- Descaling:

Descalc the machine when the CALC CLEAN button is steady on.

Only use the Philips/Saeco decalcifier CA6700. It takes approx. 35 min. Finish the complete descale process till the end without interruption.



- Brew group cleaning:

Support movies available within the FAQ's; How to lubricate/how to clean.

Clean the brew group weekly. Take it out and wash it with fresh, lukewarm water.

Lubricate the brew group once a month or if needed after cleaning. Use Saeco grease HD5061.



- Cleaning Classic Milk frother:

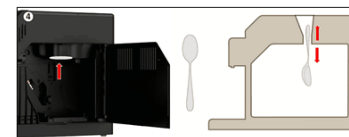
Daily or after use: Remove the external part and clean it with fresh water.

Weekly: Remove the external and upper part and clean them with fresh warm water. Clean the wand with a wet cloth.



- Cleaning coffee duct outlet (coffee funnel):

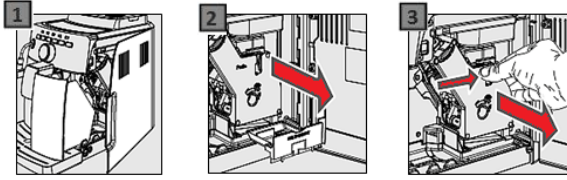
Clean the coffee duct outlet every time you clean the brew group. Take out the brew group and clean the coffee duct outlet with a spoon handle.



Brew group:

How to remove:

1. Turn OFF the machine, remove the coffee ground container and open the service door.
2. Remove the coffee residues drawer. (clean if needed)
3. To remove the brew group, press the PUSH button and pull it out by its handle.

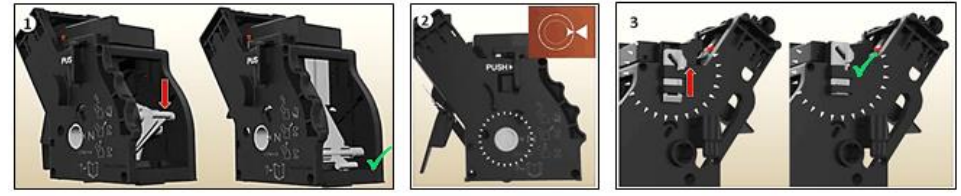


How to insert, set in rest position:

Important! If the brew group does not stand in the rest position, it cannot be reinserted.

How to set the brew group in the rest position:

1. The lever must be in contact with the brew group base. Push it down.
2. The two arrow heads on the side of the brew group will now match.
3. The locking hook on the side of the brew group needs to be in uppermost position. Push it upwards until you hear a soft click.



Most important warning message: There are several indicator lights on the control panel. The messages and possible solutions depend on which light is on and in which way they are lighted. The lights can be steady on, flash slowly or flash quickly. See user manual for the complete overview.



CALC CLEAN button

- **Is steady on:** The machine needs to be descaled.
- **Flashing slowly (once per second):** The descaling procedure is active. As long as the calc clean button flashes, the descale procedure is not yet finished.
- **Flashing quickly (2 times per second):** 1). The CACL CLEAN was paused or interrupted. 2). In case also the NO WATER light is on, the descaling procedure is not yet finished.



WARNING light

- **Flashing slowly (once per second):** 1). The service door is open or not closed properly, close the service door. 2). The brew group is not inserted or not inserted correctly. Take out the brew group, clean it if needed. Make sure it is place back correct.



NO WATER + WARNING + NO COFFEE + COFFEE GROUND CONTAINER light

- **All lights flash at the same time:** This means a fault has occurred in the machine. 1). Check if the water tank has been inserted correctly. 2). Try to prime the circuit by dispensing some hot water. 3). Switch OFF the machine, wait at least 30 seconds and then switch it ON again. Try this 2 or 3 times. If this does not work the machine needs service.



COFFEE GROUND CONTAINER light

- **Flashing slowly (once per second):** Insert the coffee ground container.
- **Flashing quickly (2 times per second):** The coffee ground container is full and needs to be emptied. IMPORTANT: Always make sure that the coffee ground container is emptied while the machine is switched ON.
- **Keeps flashing quickly after placing back the coffee ground container:** The coffee ground container was placed back too fast. Before reinserting, wait until the COFFEE GROUND CONTAINER light starts flashing slowly.



NO WATER + WARNING light + HOT WATER button

- **NO WATER and WARNING light are steady on and HOT WATER button is flashing slowly (once per second):** You need to prime the circuit. Follow the steps for priming:
 1. Fill the water tank with water.
 2. Place a container under the Classic Milk frother.
 3. Press the flashing HOT WATER button.
 4. The machine starts dispensing hot water . When it is finished, the ESPRESSO and COFFEE button will start to blink which indicated the machine is heating up.

Dispensing hot water:

In case the coffee flow is not optimal, less or no coffee is coming out, prime the system manually by dispensing some hot water. Also dispense some hot water after exchanging a filter, as air may have entered during this operation handling.

Steps to dispense hot water:

1. Fill the water tank with fresh water and place a container under the Classic Milk frother.
2. Make sure the machine is ready for use and the HOT WATER, ESPRESSO, COFFEE and STEAM button are steady on.
3. Press the HOT WATER button. The HOT WATER button switches off and the ESPRESSO and COFFEE button will start to flash(machine warms up).
4. When the HOT WATER button lights up again, the machine will start dispensing hot water. Before a continuous flow of hot water comes out, it may start with some small jets of hot water.
5. Press the HOT WATER button when the desired amount of hot water has been reached.

Descaling process:

- Descale the machine when CALC CLEAN button is permanently on.
- The total process takes approx. 35 minutes. Finish the complete descale process till the end without interruption.
- The complete process consists of 3 cycles; One **descaling cycle** with the specific decalcifier and two **rinsing cycles** with fresh water.
- Before starting the descaling process: Remove the classic milk frother, and remove any extra placed filter from the water tank. Empty the drip tray.

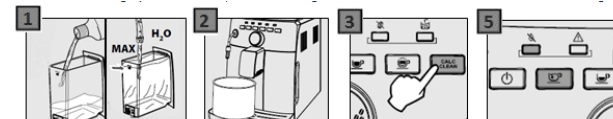
Only use the
Philips/Saeco
decalcifier
CA6700



Compact description descaling process:

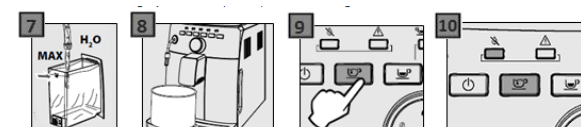
Start descaling/descaling cycle:

1. Switch the machine on. Empty the water tank and pour the entire bottle of Saeco descaling solution in it.
2. Top up the water tank with fresh water to the MAX level and place it back.
3. Place a container under the steam/hot water wand and the coffee dispensing spout.
4. Press and hold the CALC CLEAN button for about 3 seconds. Release it when the CALC CLEAN button starts flashing. The descaling cycle starts. *Note: The CALC CLEAN button flashes during the whole descaling cycle.* The machine starts dispensing alternately through the steam/hot water wand and the dispensing spout. This takes about 15 minutes.
 - When it dispenses through the steam wand, the HOT WATER button turns steady on.
 - When it dispenses through the dispensing spout, the spout the ESPRESSO button turns steady on.
5. When the descaling cycle is finished, the NO WATER light turns steady on and the HOT WATER button starts flashing.



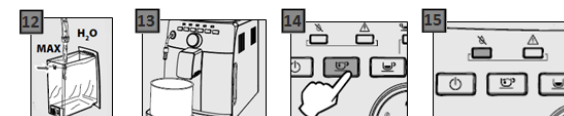
First rinse cycle:

6. Empty the drip tray and place it back.
7. Rinse the water tank thoroughly, fill it with fresh water to the MAX and place it back. The NO WATER light turns off.
8. Place the container under the steam/hot water wand and the dispensing spout.
9. Press the HOT WATER button to start the first rinsing cycle. The machine dispenses for 3-5 minutes through the steam/hot water wand.
10. When it is finished the NO WATER light turns steady on and the HOT WATER button starts flashing.



Second rinsing cycle:

11. Empty the drip tray and place it back.
12. Rinse the water tank, fill it with fresh water to the MAX and place it back. The NO WATER light turns off.
13. Place back the container under the steam/hot water wand and the dispensing spout.
14. Press the HOT WATER button to start the second rinsing cycle. The machine first dispenses some water through the dispensing spout and then the rest through the steam/hot water wand until the water tank is empty.
15. At the end of the second rinsing cycle, the CALC CLEAN button turns off and only the NO WATER light stays on; the descaling process is completed. **Important:** If the water tank is not filled up to the MAX level for the rinsing cycles, the CALC CLEAN button keeps on flashing after the second rinsing cycle. You need to perform another rinsing cycle. Repeat steps 12 till 14 until the CALC CLEAN button turns off.



What to do if the descale procedure cannot be finished/ Calc Clean light does not switch off:

The descale process needs to be finished till the end. It cannot be stopped by switching it off or unplugging.

If the Calc Clean light does not switch off/ or you are lost in the descale procedure you need to:

1. Unplug the machine.
2. Fill the water tank with fresh water to the MAX level.
3. Place the container under the steam/hot water wand and the dispensing spout.
4. Plug in the machine and switch it on by pressing the ON/OFF button. The ON/OFF button starts flashing.
5. Press the flashing ON/OFF button. The ON/OFF button turns off and the CALC CLEAN button starts flashing fast.
6. Press the fast flashing CALC CLEAN button;
 - o If the machine directly starts dispensing at regular intervals through the dispensing spout and steam wand, the machine was interrupted during the descaling cycle. Let the machine dispense until the NO WATER light turns on and the HOT WATER button starts flashing. This takes about 15 minutes. Continue from there with step 6 of the compact descaling description till the end.
 - o If the HOT WATER button starts flashing fast, the machine was interrupted during one of the rinsing cycles. Press the HOT WATER button.
 - If the machine starts dispensing through the steam wand, it was interrupted during the first rinsing cycle. Wait until the NO WATER light turns on and the HOT WATER button starts flashing. Continue from here with step 11 of the compact descaling description till the end.
 - If the machine starts dispensing through the dispensing spout, the machine was interrupted during the second rinsing cycle. Let the water run until the CALC CLEAN button turns off and only the NO WATER light stays on.

Trouble shoot:

No coffee or only some drops of coffee are being dispensed (not first time use)/ The coffee is getting watery: This can have different causes; 1). The grinder is blocked; clean the coffee bean container and coffee duct outlet. 2). Polluted/not well greased brew group; clean the brew group and make sure it is well greased. 3). Grind setting is set too fine; change the grinder to a course setting. 4). Extra water filter not well placed (optional); Remove the extra water filter and try to make a coffee. If this works replace the filter. 5). Air in the internal circuit; dispense some hot water. 6). Lime scale is causing a blockage; if the machine has not yet been descaled, descale the machine.

One of the warning lights is blinking fast/slow/steady on: There is a complete list in the user manual with all causes and actions of the different warning messages, 1). Indicate which light/button is on/flashing and in which way fast/slow. 2). Check the user manual/FAQ's on the solution and advise.

The descaling process cannot be finished: See previous slide: What to do if the descale procedure cannot be finished/ Calc Clean light does not switch off.

Cannot insert/remove the brew group:

Cannot insert: 1). Make sure the brew group is set in the rest position before placing it back. 2). If still not possible to insert; place back the drip tray including coffee ground container, close service door, switch ON and back OFF the machine. Try again to insert the brew group.

Cannot remove: 1). Check if the machine is still in the descaling process, if yes then first finish the descaling. If not, place back the drip tray including coffee ground container, close service door, switch ON and back OFF the machine. Try again to remove the brew group.

How come the drip tray fills up quite fast: It is normal for the drip tray to fill up quickly and does not concern a defect. During use, the internal circuits are rinsed with water that automatically ends up in the drip tray. Empty the drip tray frequently and when the 'drip tray full' indicator pops up through the drip tray cover.

No hot water or steam comes out of the Classic Milk frother/steam wand: 1). The hole of the hot water/steam wand is clogged, unclog it with a pin. 2). Remove and clean the classis milk frother thoroughly. 3). Descale the machine.

The coffee pucks are wet, and/or there is water in the coffee ground container: The consistency of the coffee pucks is related to the settings of the machine, and does not directly point to a machine defect. Expect watery coffee pucks or some extra water in the coffee ground container: 1). During first time use as the auto-dosing system is still adapting. 2). After switching to a different blend of coffee beans or adjusting the grind settings, just brew some extra cups. 3). After changing machine settings as; grind setting, coffee volume and aroma setting. As a coarse grind setting, higher coffee volume or a lighter aroma setting will lead to a waterier coffee puck.

The machine is not grinding the beans: 1). Change the grind setting to a courser setting. 2). Clean the coffee duct outlet and brew group.

The coffee/milk temperature is not hot enough: 1). Pre-heat the cups and use thin walled cups. 2). Adding cold milk or warm frothed milk, in both cases the temperature will decrease to some extent. Milk foam in particular should not be heated up to more than 55°C. The optimal temperature for milk foam is 40-45°C. At a higher temperature, the protein in the milk coagulates and the foam collapses.

Why doesn't the Classing Milk frother froth the milk? 1). Clean the Classing milk frother and the steam wand. Remove the external and upper part and clean them with fresh water. Clean the wand with a wet cloth and a pin. 2). Use cold (approx. 5°C / 41°F) milk with a protein content of at least 3% to ensure optimum results when preparing a cappuccino. 3). Tip to create milk foam: Froth the milk by gently swirling the container and moving it up and down.

There is water under the machine (machine is leaking): This can have different causes; 1). The drip tray is too full and overflowed during brewing or the descaling process. Always place the machine on a horizontal surface and check the 'drip tray full' indicator before brewing a coffee. Empty the drip tray before you start descaling. 2). Check if the water tank is leaking. 3). The brew group or some drains may be blocked, clean the brew group and the inside of the machine.

There is coffee powder under the brew group/in the interior: Because of the fineness of the ground coffee powder, some coffee powder residues in the interior and under the brew group are normal. If there is a lot of coffee powder, the piston of the brew group is not well greased, clean and grease the brew group.

ON/OFF button does not work/ cannot switch machine ON: Make sure the power cord on the back of the machine is well inserted.