

HD3065  
HD3067



EN User manual      ZH-HK 使用手冊

PHILIPS



All registered and unregistered trademarks are property of their respective owners.  
© 2012 Koninklijke Philips Electronics N.V.  
All rights reserved.

HD3065\_3067\_UM\_ZH-HK\_V1.0\_0919



English

1 Your fuzzy rice cooker

Congratulations on your purchase, and welcome to Philips!  
To fully benefit from the support that Philips offers, register your product at www.Philips.com/welcome.

2 What's in the box

Fuzzy rice cooker main unit      Steam basket  
Rice scoop      Soup ladle  
Measuring cup      User manual  
Safety leaflet      Warranty card

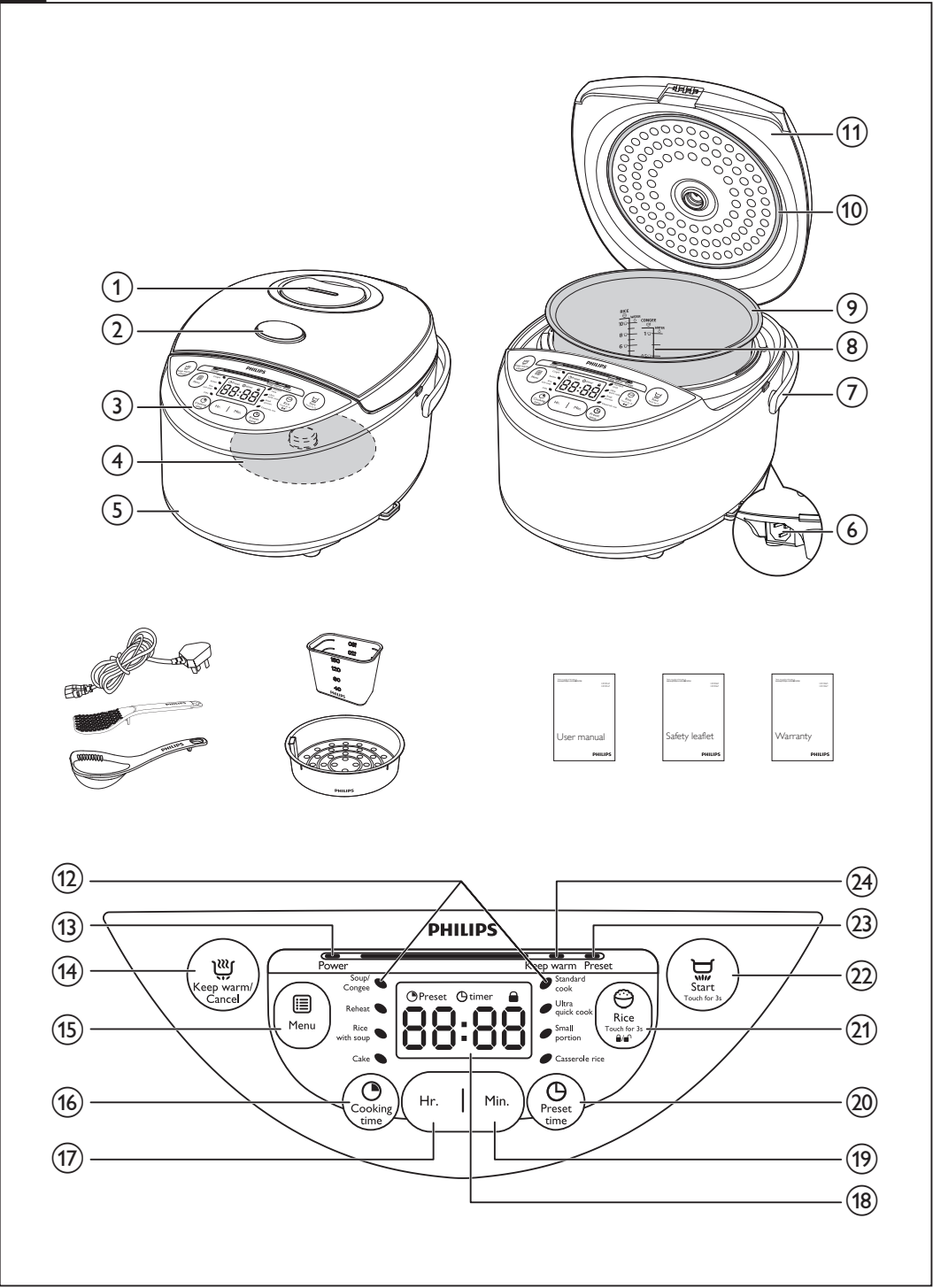
Overview

① Detachable steam vent cap	⑦ Cooker handle
② Lid release button	⑧ Water level indications
③ Control panel	⑨ Inner pot
④ Heating element	⑩ Sealing ring
⑤ Main body	⑪ Outer lid
⑥ Power plug	

Controls overview

⑫ Cooking functions	⑲ Minute button
⑬ Power indicator	⑳ Preset time button
⑭ Keep warm/Cancel button	㉑ Rice button

What's in the box 包裝盒內含物件



⑮ Menu button	㉒ Start button
⑯ Cooking time button	㉓ Preset indicator
⑰ Hour button	㉔ Keep warm indicator
⑱ Screen	

Before first use

- 1 Take out all the accessories from the inner pot. Remove the packaging material of the inner pot.
- 2 Clean the parts of the rice cooker thoroughly before using the rice cooker for the first time (see chapter 'Cleaning').

Note

- Make sure all parts are completely dry before you start using the rice cooker.

3 Using the fuzzy rice cooker

Before using the rice cooker, you need to follow below preparations:

- 1 Measure the rice using the measuring cup provided.
- 2 Wash the rice thoroughly.
- 3 Put the pre-washed rice in the inner pot.
- 4 Add water to the level indicated on the scale inside the inner pot that corresponds to the number of cups of rice used. Then smooth the rice surface.
- 5 Press the release lever to open the lid.
- 6 Put the inner pot in the rice cooker. Check if the inner pot is in proper contact with the heating element.

- 7 Close the lid of the rice cooker, put the plug in the power socket.

Note

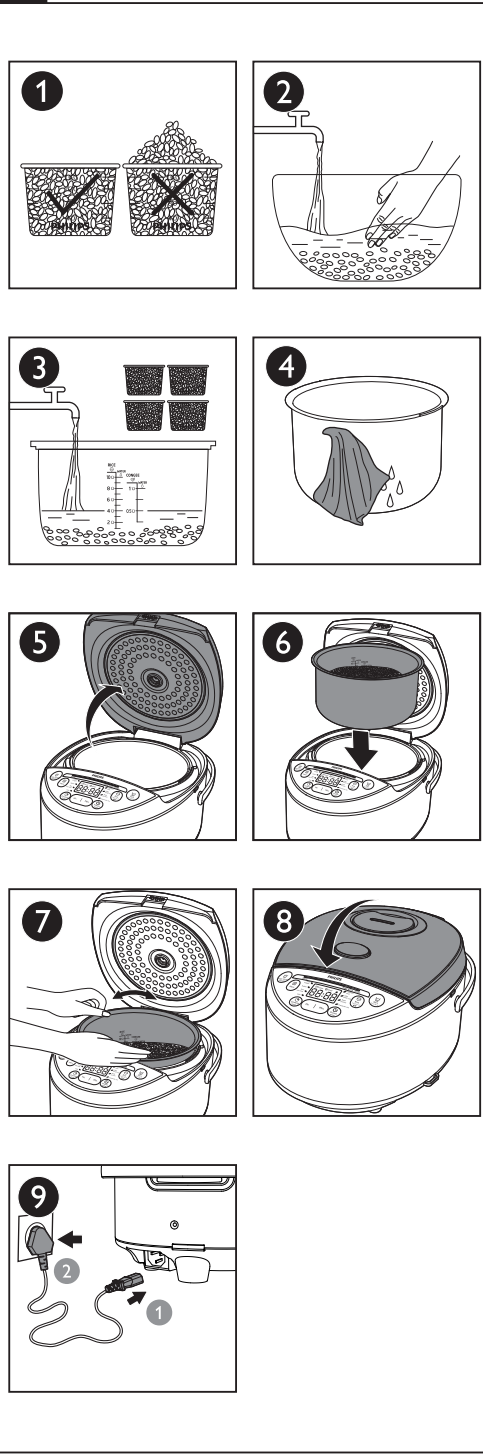
- Each cup of uncooked rice normally gives 2 bowls of cooked rice. Do not exceed the quantities indicated on the inside of the inner pot. 1 cup of rice is approximately 180ml.
- The level marked inside the inner pot is just an indication. You can always adjust the water level for different types of rice and your own preference.
- If the voltage is unstable at the area you live, it is possible that the rice cooker overflows.
- Besides following the water level indications, you can also add rice and water at 1:1-1.2 ratio for rice cooking and 1:8 ratio for congee cooking. Do not exceed the quantities indicated on the inside of the inner pot.
- Make sure that the outside of the inner pot is dry and clean, and that there is no foreign residue on the heating element or the magnetic switch.

Rice cooking

There are three rice cooking functions for HD3065 and HD3067.

Cooking function	Estimated cooking time for 2 - 4 cups of rice (HD3065 and 10 cups of rice (HD3067)
Standard rice cooking (Standard cook)	45 minutes
Ultra quick rice cooking (Ultra quick cook)	35 minutes

1 Using the fuzzy rice cooker 使用快思電飯煲



Small amount of rice cooking (Small portion) 30 minutes

- 1 Follow the preparation steps in "Using the fuzzy rice cooker".
- 2 Press the rice button (☺) until the desired cooking function is selected.
- 3 Press and hold the start button (☑) for 3 seconds to start cooking, and the timer starts to countdown.
- 4 When the cooking is finished, you will hear 4 beeps and the selected cooking function light will be off.
- 5 The rice cooker will be in keep warm mode automatically.  
→ The keep warm (Keep warm) indicator will light up.

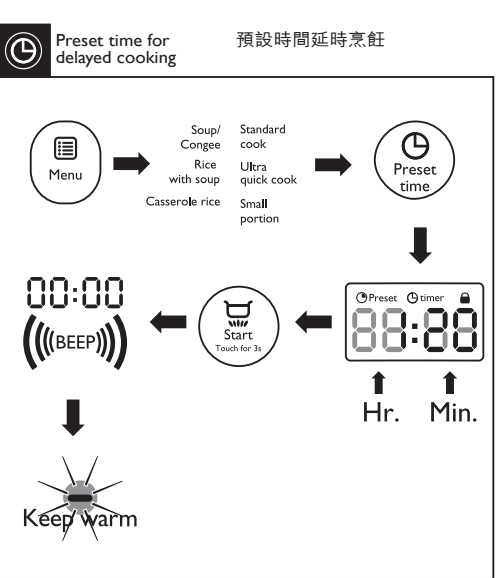
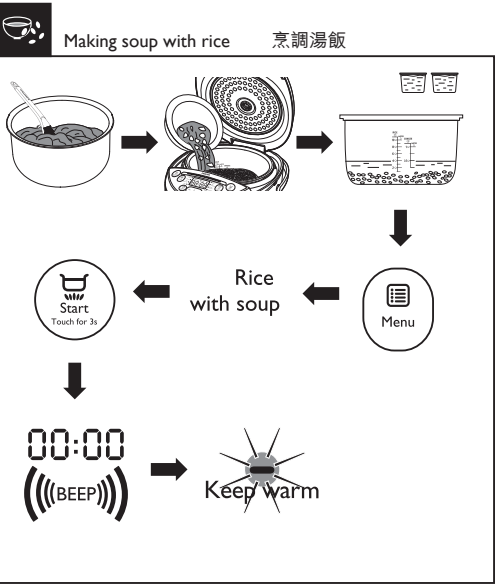
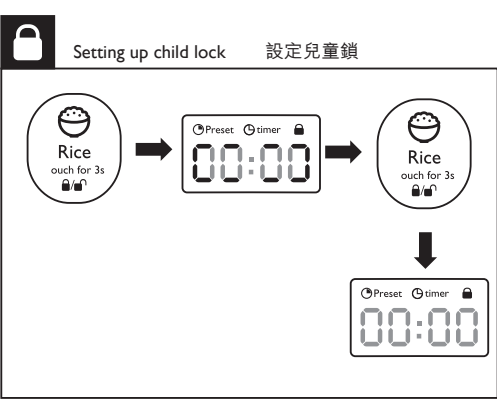
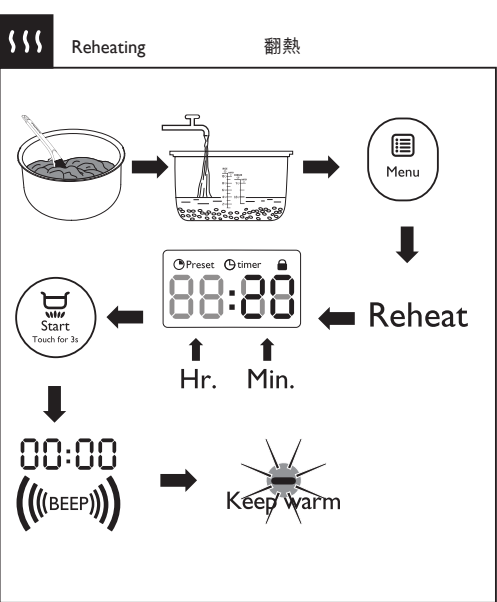
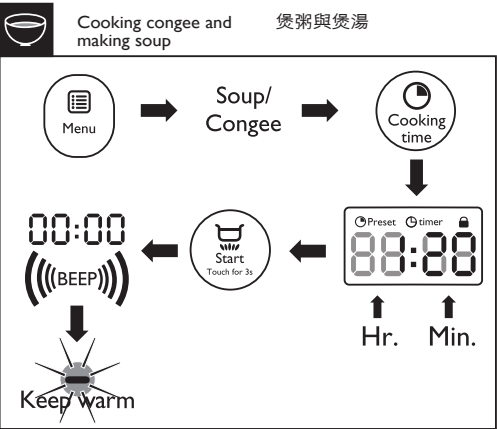
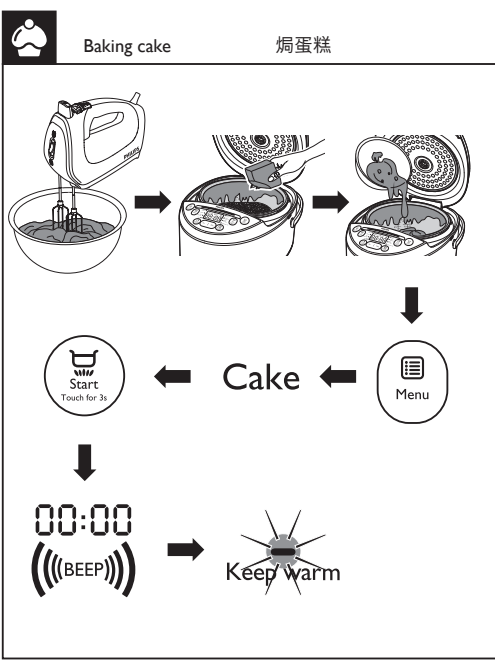
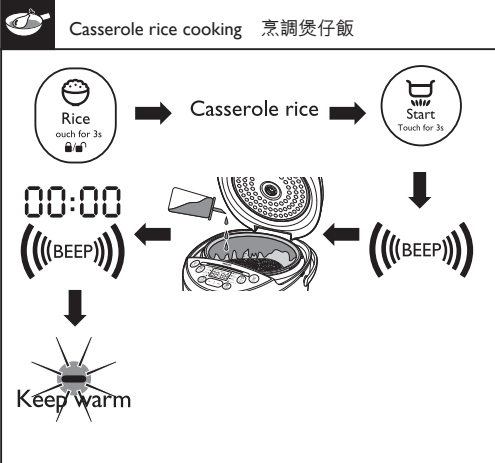
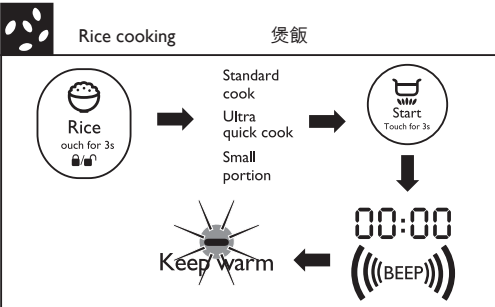
Note

- After you have pressed the rice button (☺) and left the rice cooker in idle for 10 seconds, it will sound and return to standby mode automatically.
- You can press the cancel button (☒) or unplug the rice cooker to turn off the keep warm function or when not in use.

Casserole rice cooking

Cooking function	Estimated cooking time for 2 - 4 cups of rice (HD3065 and HD3067)
Casserole rice cooking (Casserole rice)	1 hour 20 minutes

- 1 Follow the preparation steps in "Using the fuzzy rice cooker".
- 2 Press rice button (☺) until the casserole cooking function (Casserole rice) is selected.



Reheating

Cooking function	Estimated cooking time
Reheating (Reheat)	25 minutes

- 1 Loosen the cooled rice and evenly distribute it in the inner pot.
- 2 Pour some water onto the rice to prevent it from becoming too dry. The quantity of the water depends on the amount of rice.
- 3 Follow steps 6 and 7 in "Using the fuzzy rice cooker".
- 4 Press the menu button (☐) until reheating function (Reheat) is selected.
- 5 Press the cooking time button (⌚), and the timer will start flashing on the screen.
- 6 Press the minute button (Min.) to input the required cooking time.
- 7 Press the start button (☑) for 3 seconds to start cooking.
- 8 When the cooking is finished, you will hear 4 beeps and the selected cooking function light will be off.
- 9 The rice cooker will be in keep warm mode automatically.  
→ The keep warm (☑) indicator will light up.

Note

- After you have pressed the menu button (☐) and left it in idle for 15 seconds, your rice cooker will sound and return to waiting mode automatically.
- You can press the cancel button (☒) or unplug the rice cooker to turn off the keep warm function or when not in use.



