

IMPORTANT SAFETY INSTRUCTIONS

When using a battery operated appliance, basic precautions should always be followed, including the following:

Read all instructions before using.

WARNING

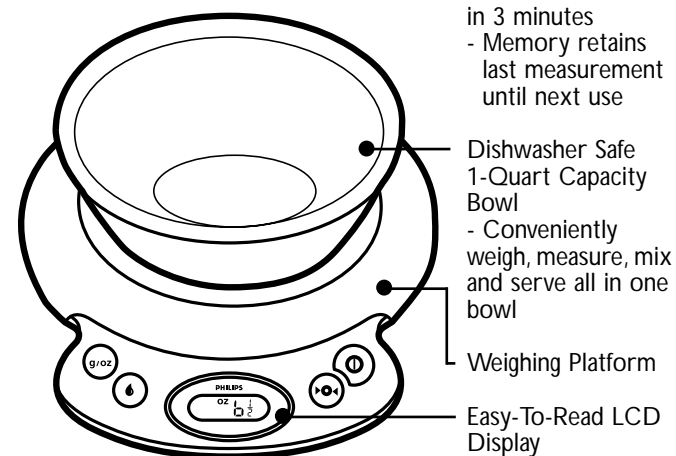
1. This appliance is intended for household use only; it is not for commercial or industrial use.
2. Use this appliance only for its intended use as described in this manual. Do not use accessory attachments not recommended by Philips Electronics North America Corporation.
3. Do not place on or near a hot gas or electric burner, or in a heated oven or microwave.
4. Operate on a flat surface away from edge of counter to prevent accidental tipping.
5. Do not operate this appliance if it is not working properly, if it has been dropped or damaged or dropped into water, or after the appliance malfunctions, or has been damaged in any manner. Return the appliance to the nearest Authorized Norelco Service Location for examination, repair or adjustment.
6. Do not immerse the appliance in water or other liquids.
7. Never drop or insert any objects into any opening of the appliance.
8. Never use or store the appliance in direct sunlight or at temperatures below 41°F/5°C or above 113°F/45°C.
9. Keep the appliance away from heated surfaces.
10. Do not operate this appliance in places where aerosol (spray) products are being used or where oxygen is being administered.
11. Any service of the kitchen scale should be performed by an Authorized Service Location.
12. If the appliance will not be used on a regular basis, remove the battery when storing the appliance to prevent possible damage due to leakage. If the battery does leak, remove it carefully. Never allow your bare skin to come into contact with the leaking fluid.
13. Do not use a rechargeable battery in this appliance.
14. Dispose of used battery properly.
15. Do not wrap the battery in metal or aluminum foil.
16. Do not incinerate the battery. Battery may explode when overheated.
17. Wrap the battery in a newspaper before discarding.
18. It is suggested that you contact your local town/city officials to determine the proper battery disposal site(s) in your area.

SAVE THESE INSTRUCTIONS

ELECTROMAGNETIC COMPATIBILITY

This product is a sensitive electronic instrument and as such may temporarily be affected by Radio Transmitting Devices being used in close proximity to it such as cordless or mobile phones, walkie talkies, CB radios, radio model or remote controllers, and some microwave ovens. Therefore, it is recommended that the scale be kept or operated at a safe distance of approximately 6 1/2 feet or 2 meters away from these devices. If the scale does exhibit symptoms such as the display of erratic or erroneous data, try moving the scale away from the source of interference or switching off the source of interference while you are using this product.

FEATURES



Automatic shut-off in 3 minutes
- Memory retains last measurement until next use

Dishwasher Safe 1-Quart Capacity Bowl
- Conveniently weigh, measure, mix and serve all in one bowl

Weighing Platform

Easy-To-Read LCD Display

Operates on one 9V alkaline battery (not included)

Buttons

- Conversion Button
- Reset/Tare Button
- Liquid and Solid Function
- On/Off Button

IMPORTANT

Read these instructions for use carefully before using the appliance and save them for future reference.

- ▶ This appliance can weigh up to a maximum of 11 pounds / 5 kilograms. Overloading the weighing platform with weight heavier than the maximum amount can permanently damage the appliance.
- ▶ Use the appliance for its intended household use as described in this manual.
- ▶ This appliance is factory preset with oz (ounces) as the default measurement standard.
- ▶ Make sure that there is nothing on the weighing platform when the scale is not in use.
- ▶ Do not immerse the scale in water or any other liquid and do not allow liquid to enter the scale.
- ▶ Always place the appliance on a solid, smooth and horizontal surface when you use it.

This scale is a precision appliance and should be handled with care. Avoid rough handling, shaking and vibrations.

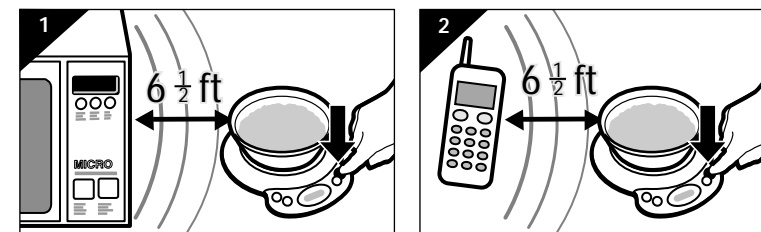
- ▶ All plastic parts, including the bowl, should be cleaned immediately after contact with spices, vinegar, fats or strongly colored/ flavored foods or liquids. Avoid contact with acid-based foods such as citrus fruit juices.
- ▶ Do not place raw meat, chicken or fish directly on the weighing platform. It is recommended that you place a piece of plastic wrap, wax paper or aluminum foil on the platform first, press the Reset/Tare Button to reset weight to zero, and then place the meat, chicken or fish on it to be weighed. You may also weigh raw meat in the bowl, but be sure to thoroughly clean the bowl after each use. Be sure to immediately clean off any meat juices that may spill onto the weighing platform to prevent cross-contamination of foods.
- ▶ Radio transmitting devices may cause interference, which can lead to unreliable weighing results.

Use the kitchen scale at a safe distance of at least 6 1/2 feet or 2 meters from a working microwave oven, cordless or mobile phone, etc. or switch those devices off (fig. 1 and 2).

Inserting the battery

The scale operates on one 9-volt alkaline battery (not included).

1. Open the battery compartment (fig. 3).
2. Connect the battery to the battery connector (fig. 4).
3. Place the battery in the battery compartment and close the lid of the compartment (fig. 5).



Replacing the battery

1. Replace the battery as soon as the battery symbol appears in the display (fig. 6).

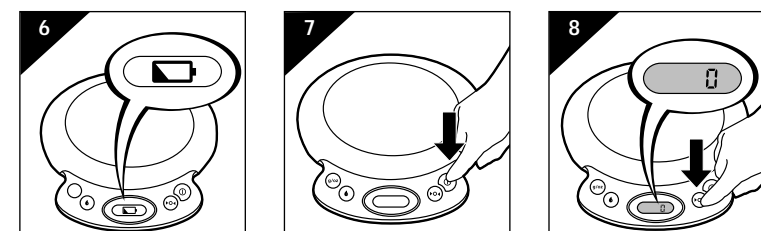
This scale has no other user-serviceable parts. Any other service should be performed by an Authorized Service Location.



Weighing

The scale can indicate weight in solid ounces and fluid ounces in graduations of 1/8 oz. or 1/8 fl. oz. In addition, the scale can also indicate weight in graduations of 1 gram from 2 grams upwards and fluid measures in milliliters and centiliters in graduations of 1 ml. or 0.1 cl.

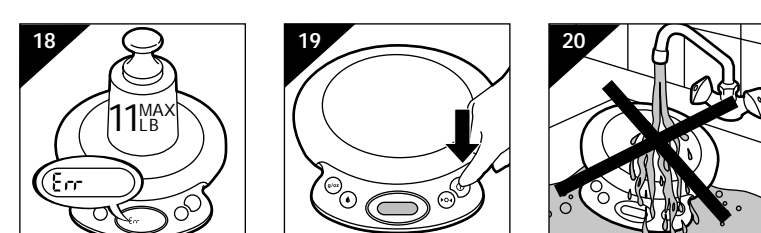
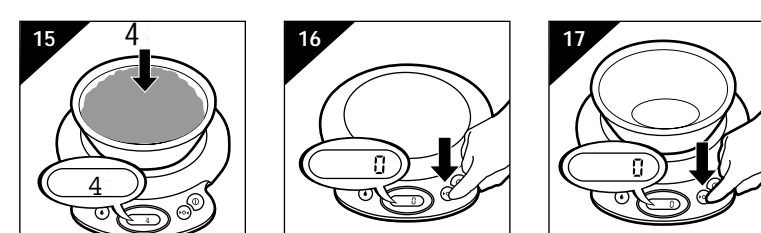
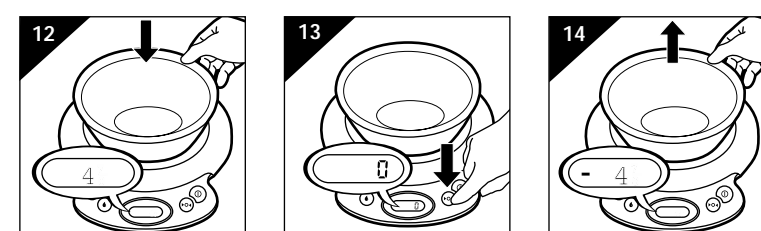
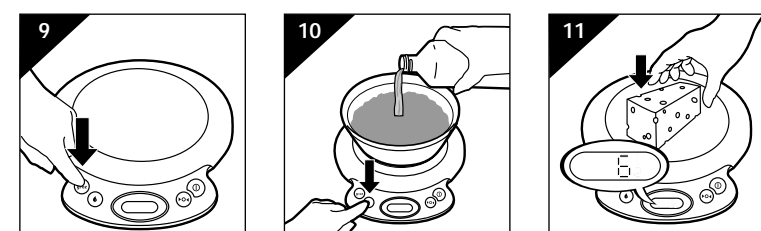
This appliance can weigh up to a maximum of 11 pounds / 5 kilograms. Overloading the weighing platform with weight heavier than the maximum amount can permanently damage the appliance. Please note that 'Err' will become visible on the display if the weighing platform has been overloaded by putting a weight of more than 11 pounds or 5 kilograms on the platform (fig. 18). Immediately remove overweight items to avoid causing permanent damage to the scale.



Buttons

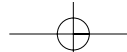
The appliance has four buttons:

1. On/Off Button (fig. 7). Press the On/Off Button briefly to switch the scale on. A series of "8888" will appear in the display and then "0". The appliance is ready for use after 2 seconds. Press the On/Off Button again to switch the appliance off. If the scale remains inactive for 3 minutes, it will automatically shut-off but retain the last measurement in its memory.
2. Reset / Tare Button (fig. 8). Press the Reset Button to set the display to '0'.
3. Conversion Button (fig. 9). -When a solid measure is displayed, the Conversion Button will change the weight displayed from ounces (oz) to grams (g) or from grams (g) to ounces (oz). The scale is preset at the factory to measure in ounces (oz). -When a fluid measure is displayed, the Conversion Button will change the units displayed from fluid ounces (fl.oz), milliliters (ml), or centiliters (cl) to ounces (oz) or grams (g).
4. Fluid / Liquid Button (fig. 10). Press the Button to change the units displayed from solid measures (oz or g) to fluid measures (fl.oz, ml, or cl) or vice-versa.



Weighing on the weighing platform

1. Place the ingredient(s) to be weighed directly on the weighing platform. The weight will be displayed immediately (fig. 11). - Do not place raw meat, chicken or fish directly on the weighing platform. It is recommended that you place a piece of plastic wrap, wax paper or aluminum foil on the platform first, press the Reset/Tare Button to reset weight to zero, and then place the meat, chicken or fish on it to be weighed. Be sure to immediately clean off any meat juices that may spill onto the weighing platform to prevent cross-contamination of foods.



Weighing in a bowl

The bowl has a 1-quart capacity.

- Put the empty bowl on the weighing platform. The display will show the weight of the bowl (fig. 12).
 - Press Reset Button **▶O◀**. The display will read '0' again (fig. 13).
- If you remove the bowl from the weighing platform, the display will show the negative weight of the bowl (fig. 14).
- Put the ingredient to be weighed in the bowl. The scale will show the weight of the ingredient only (fig. 15).
- The appliance will keep on doing so until you reset the display to '0' by pressing the Reset Button (fig. 16).

Adding ingredients

- Each time you press the Reset Button, the weight on the display is set back to '0' again, regardless of the ingredients that are already in the bowl on the weighing platform. For example: if you have put 4 ounces of sugar in the bowl on the scale and you press the Reset Button, the weight will be set back to '0' and you can easily add another ingredient, for example 4 ounces of flour, without calculating (fig. 17).
- Please note that 'Err' will become visible on the display if the weighing platform has been overloaded by putting a weight of more than 11 pounds or 5 kilograms on the platform (fig. 18).

WARNING: Overloading the weighing platform with more than the maximum allowable weight of 11 pounds / 5 kilograms can cause permanent damage to the scale.

Automatic shut-off

If the scale is turned on, but has not been used for 3 minutes, the scale will automatically shut off to conserve battery power.

Full memory backup

- This appliance has 'full memory backup': if the appliance has not been used for 3 minutes, it will switch off automatically. If you have left the ingredient(s) you have just weighed on the weighing platform, the previously shown weight will be displayed again when you press the On/Off Button **⏻** (fig. 19).
- If the appliance has switched off automatically, it will return to the solid or fluid / liquid measure selected last when it is switched on again.
- If the appliance has been switched off by means of the on/off button, it will return to the solid measure of the measurement system (ounces or metric) selected last when it is switched on again.
- To clear the memory, be sure to switch the scale off using the On/Off Button.

Cleaning

- You can clean the appliance with a damp cloth and, if necessary, a mild cleaning detergent.
- Do not use abrasive cleansers, scourers, alcohol, bleach, etc. to clean the scale or bowl.
- Never immerse the scale in water or rinse it under the tap (fig. 20).
- Only the bowl is dishwasher safe.

Storage

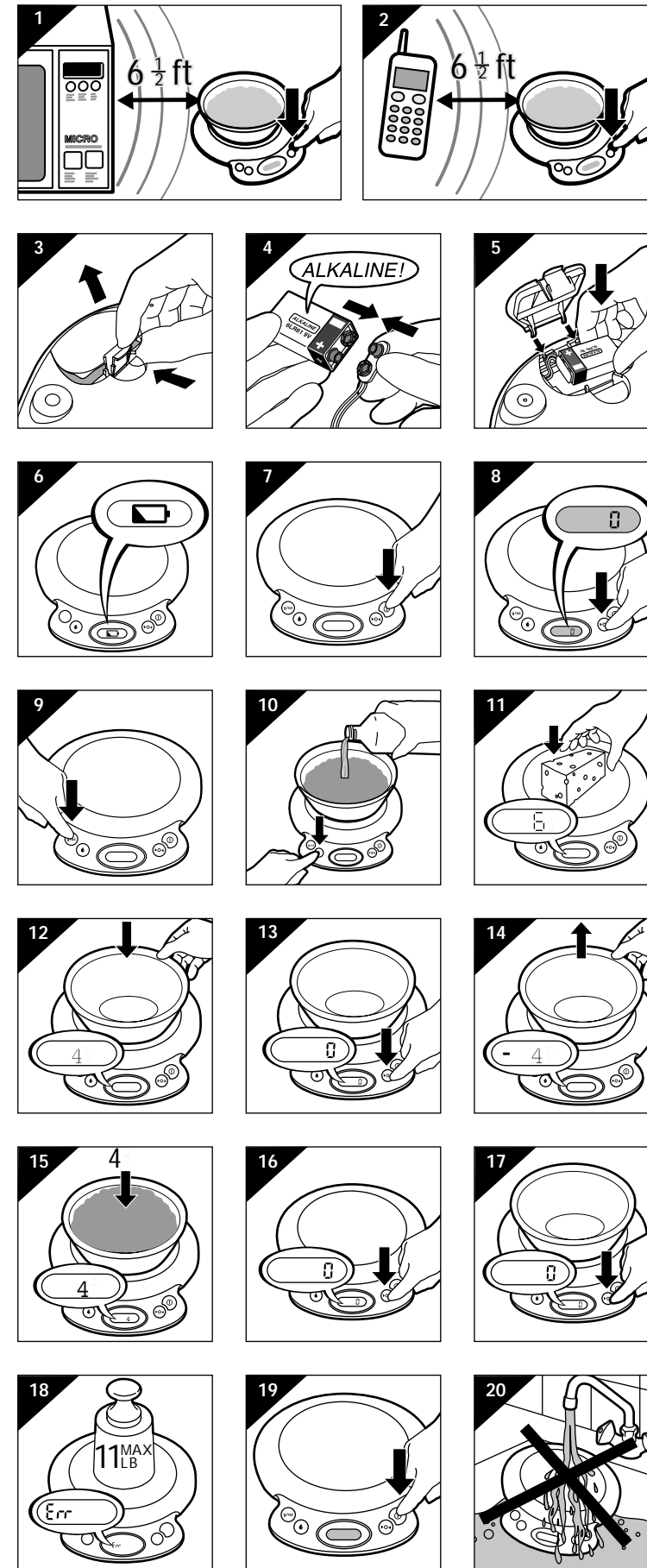
- Make sure that there is nothing on the weighing platform when the scale is not being used or stored.
- Store scale in a safe, dry location.
- If the scale will not be used for an extended period of time, remove the battery before storing.

Assistance

For assistance or the Authorized Norelco Service Location nearest you, call toll free:

1-800-243-7884 or visit our website: www.philips.com

Authorized Norelco Service Location information is available 24 hours a day, 7 days a week.



PHILIPS

Precision Electronic Kitchen Scale

HR2394



PHILIPS

FULL TWO YEAR WARRANTY

Philips Electronics North America Corporation warrants each new Philips product, model HR2394 (except battery), against defects in materials or workmanship for a period of two years from the date of purchase and agrees to repair or replace any defective product without charge.

IMPORTANT: This warranty does not cover damage resulting from accident, misuse or abuse, lack of reasonable care, the affixing of any attachment not provided with the product or loss of parts or subjecting the product to any but the specified battery.*

PHILIPS ELECTRONICS NORTH AMERICA CORPORATION WILL NOT PAY FOR WARRANTY SERVICE PERFORMED BY A NON-AUTHORIZED REPAIR SERVICE AND WILL NOT REIMBURSE THE CONSUMER FOR DAMAGE RESULTING FROM WARRANTY SERVICE PERFORMED BY A NON AUTHORIZED REPAIR SERVICE. NO RESPONSIBILITY IS ASSUMED FOR ANY SPECIAL, INCIDENTAL OR CONSEQUENTIAL DAMAGES.

In order to obtain warranty service, simply take or ship the product postage prepaid to the nearest Authorized Norelco Service Location or call PHILIPS directly at 1-800-243-7884 for assistance. It is suggested that for your protection you return shipments of product by insured mail, insurance prepaid. Damage occurring during shipment is not covered by this warranty.

Note: No other warranty, written or oral, is authorized by Philips Electronics North America Corporation.

This warranty gives you specific legal rights, and you may also have other rights which vary from state to state. Some states do not allow the exclusion or limitation of incidental or consequential damages, so the above exclusion and limitations may not apply to you.

* Read enclosed instructions carefully.

Manufactured for:
Norelco Consumer Products Company
A Division of Philips Electronics North America Corporation
1010 Washington Blvd., Stamford, CT 06912-0015
For Assistance call 1-800-243-7884

MADE IN HUNGARY.

PHILIPS and Philips Shield are Registered Trademarks of Koninklijke Philips Electronics N.V.

© 2004 Philips Electronics North America Corporation.
All Rights Reserved.

4203 064 14421