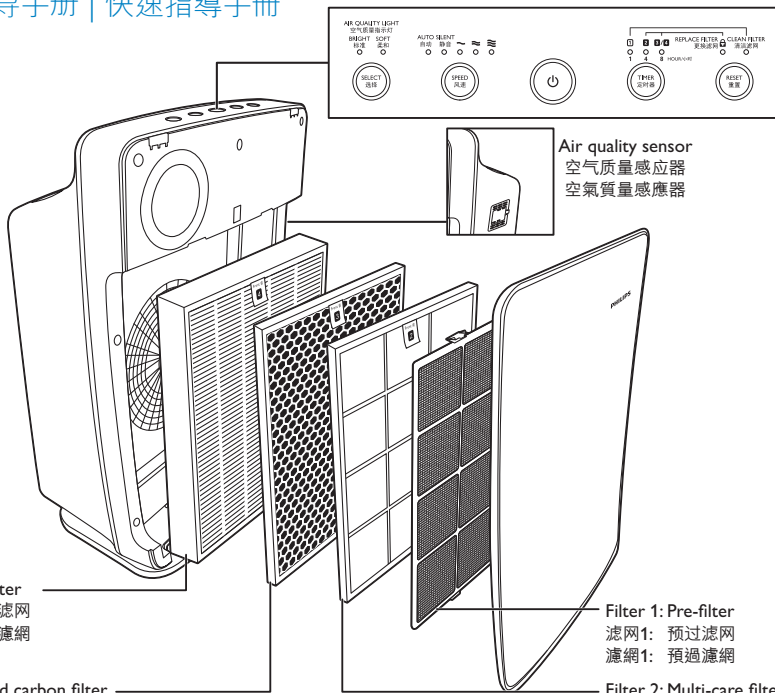
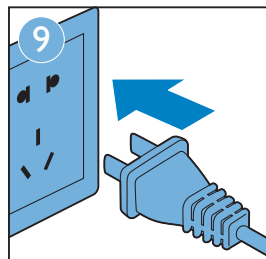
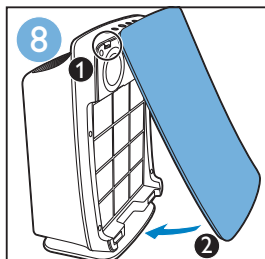
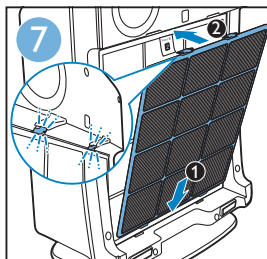
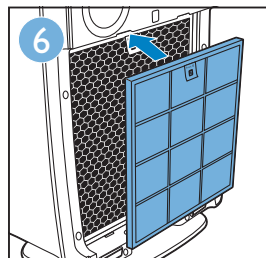
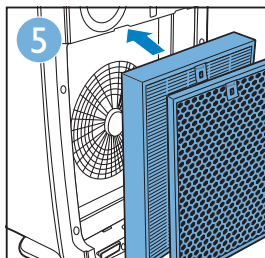
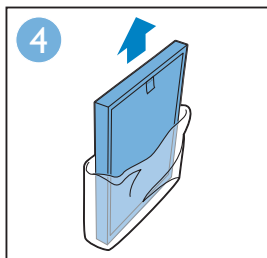
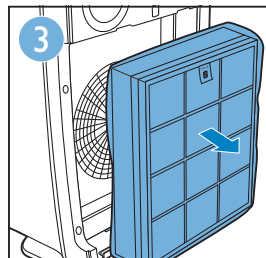
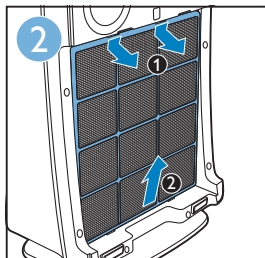
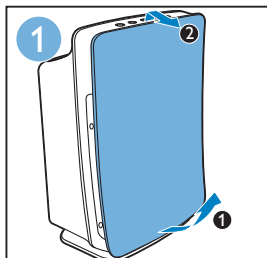


Quick start guide AC4090

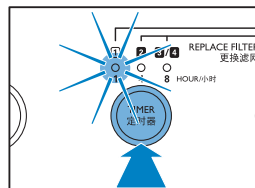
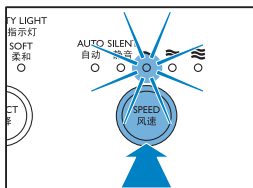
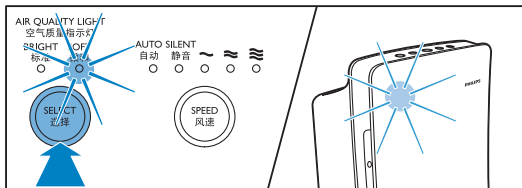
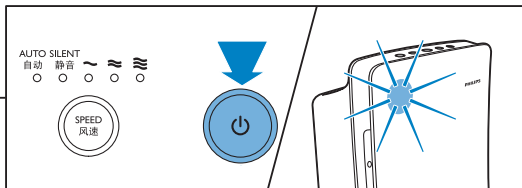
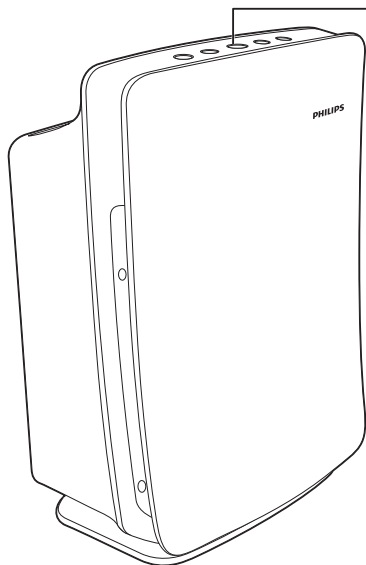
快速指导手册 | 快速指導手冊



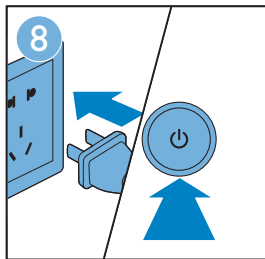
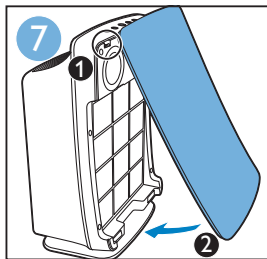
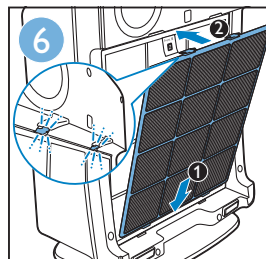
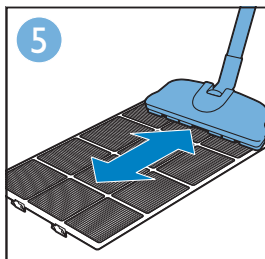
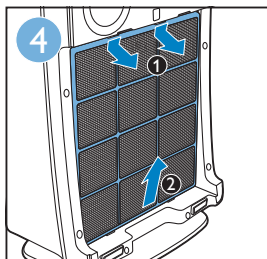
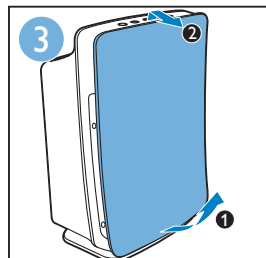
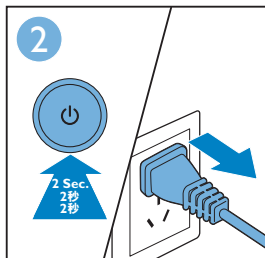
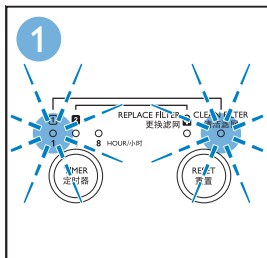
First use | 首次使用 | 首次使用



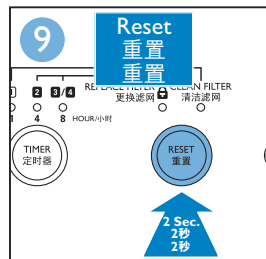
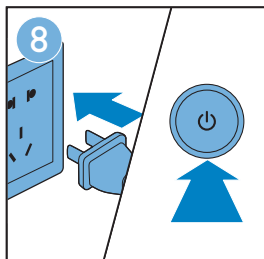
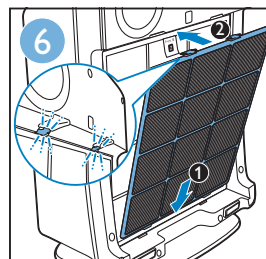
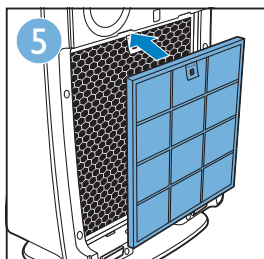
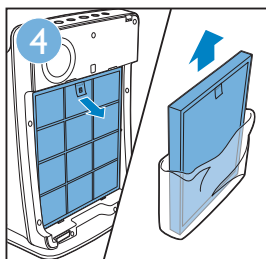
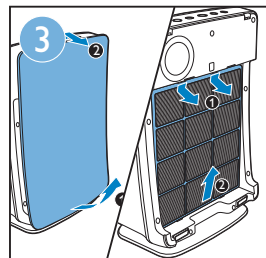
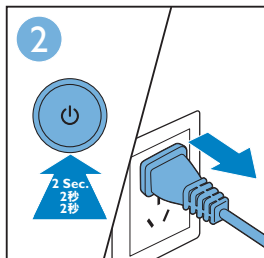
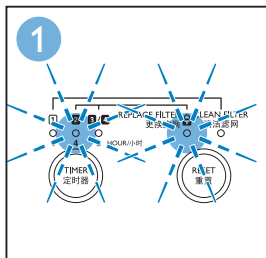
Use the appliance | 使用本产品 | 使用產品



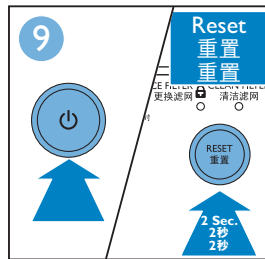
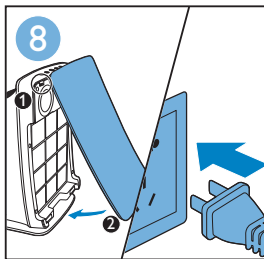
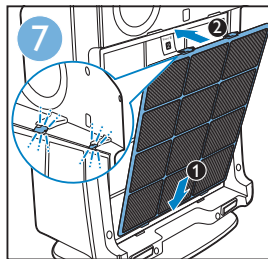
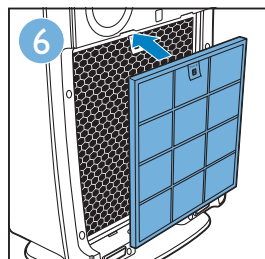
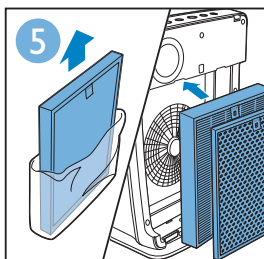
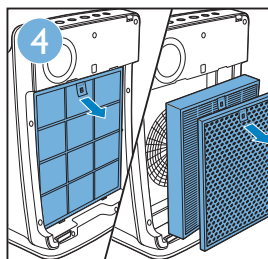
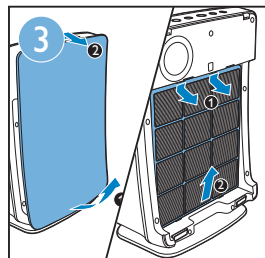
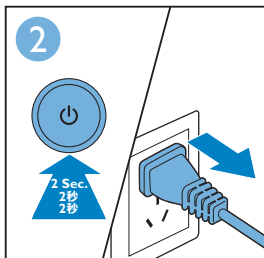
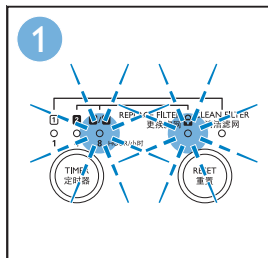
Clean filter 1 | 清潔濾網1 | 清潔濾網1



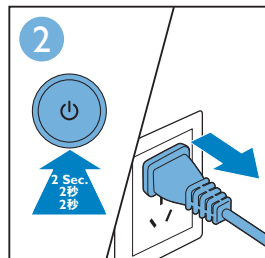
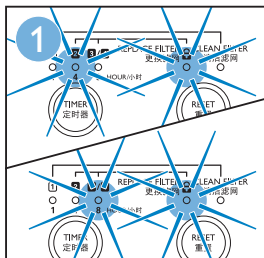
Replace filter 2 | 更換濾網2 | 更換濾網2



Replace filter 3 and 4 | 更換濾網3及4 | 更換濾網3及4

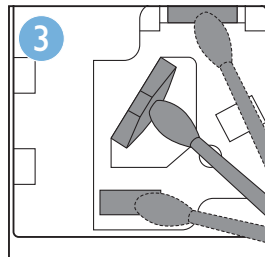
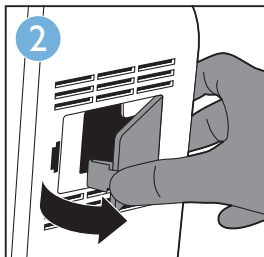
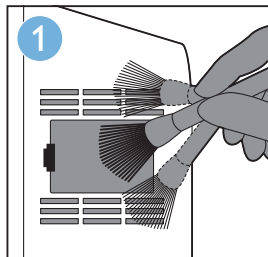


Healthy Air Protect Lock | 智能锁 | 智能鎖

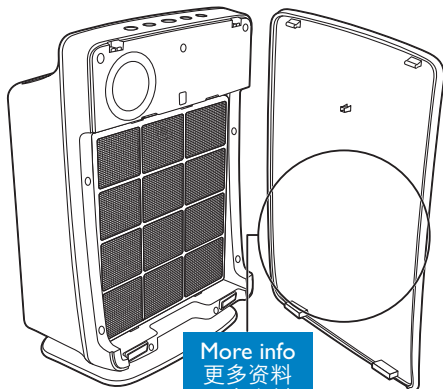


Follow the above (replace filter 2 / replace filter 3 and 4) |
按照上述指示 (更换滤网2 / 更换滤网3及4) |
按照上述指示 (更換濾網2 / 更換濾網3及4)

Cleaning sensor | 清洁感应器 | 清潔感應器



More info | 更多资料 | 更多資料



More info
更多资料
更多資料



Specifications are subject to change without notice.
© 2011 Koninklijke Philips Electronics N.V.
All rights reserved.

4222 248 54362
11291