

HD4991



EN User manual    ZH-HK 使用手冊

PHILIPS



## English

### 1 Your induction cooker

Congratulations on your purchase and welcome to Philips! To fully benefit from the support that Philips offers, register your product at [www.philips.com/welcome](http://www.philips.com/welcome).

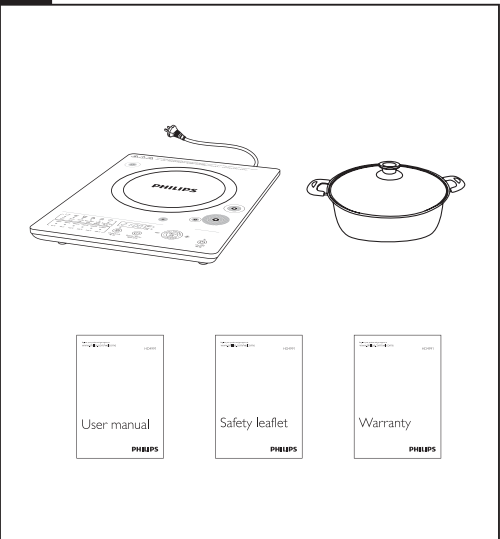
### 2 What's in the box (fig. 1)

Induction cooker main unit    Stockpot  
User manual                      Safety leaflet  
Warranty card

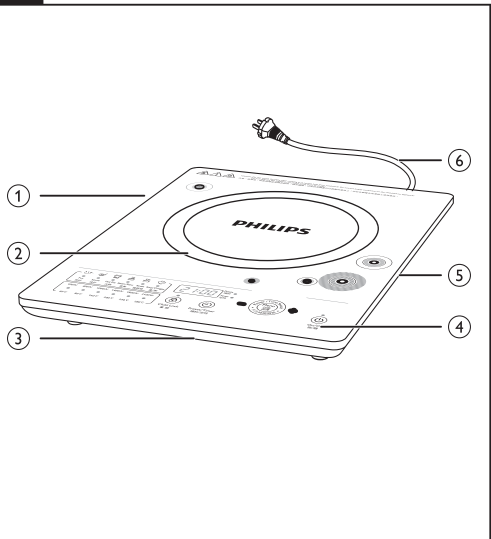
#### Overview (fig. 2)

① Crystallite cooking plate	④ Control panel
② Cooking zone	⑤ Air outlet
③ Air inlet	⑥ Power cord

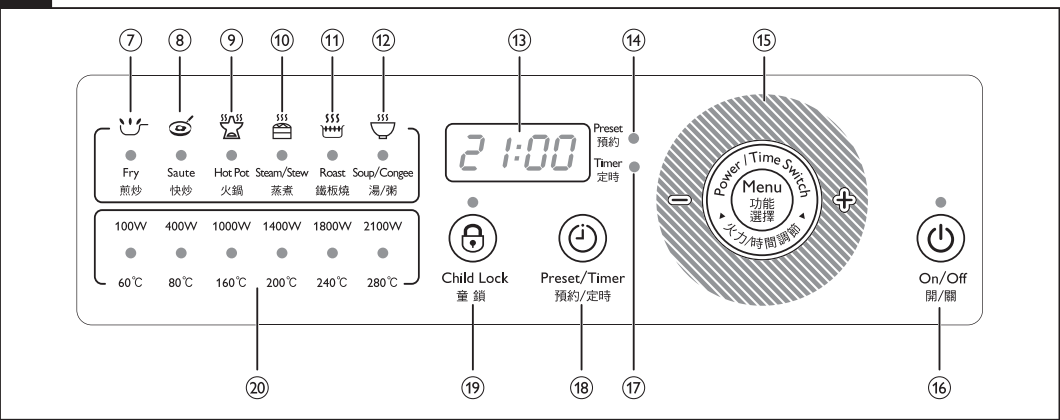
1



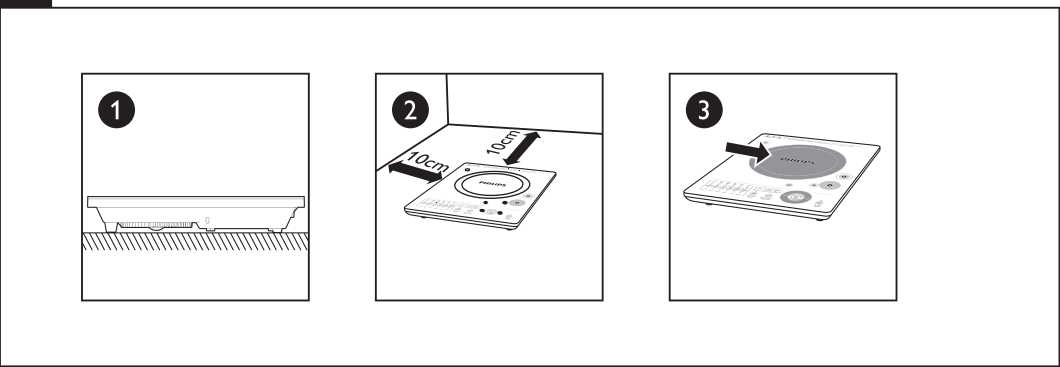
2



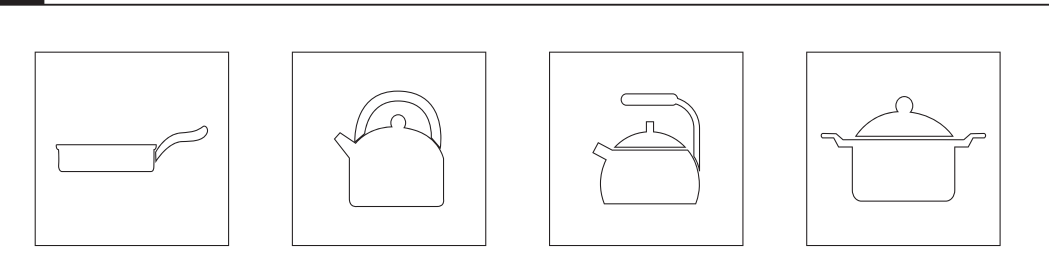
3



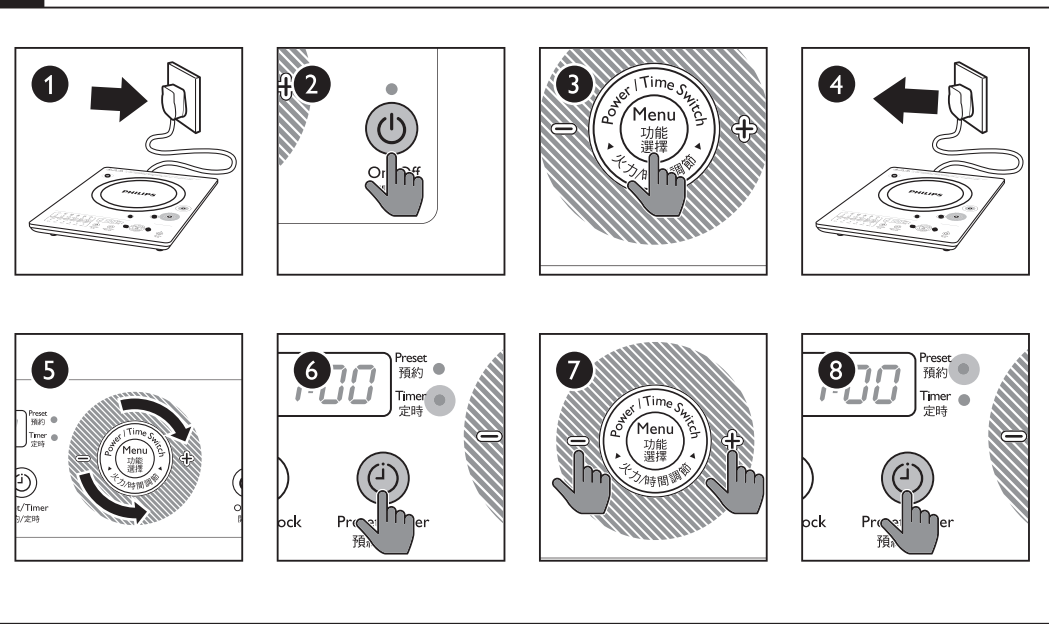
4



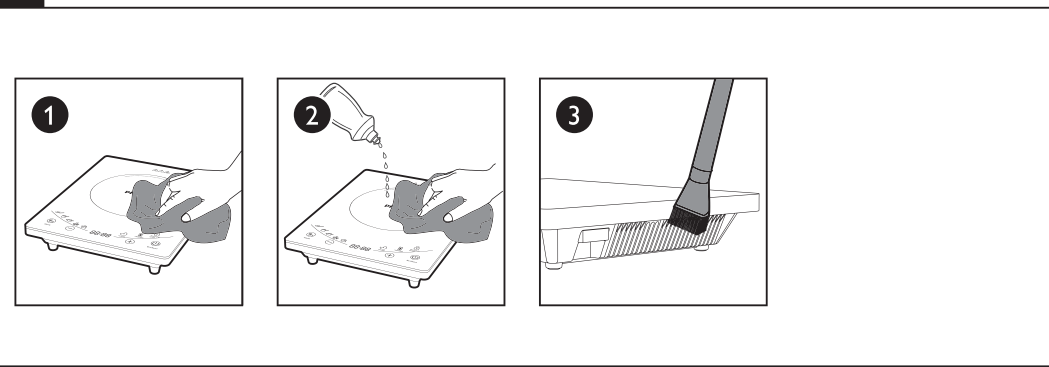
5



6



7



#### Controls overview (fig. 3)

⑦ Fry indicator	⑭ Preset indicator
⑧ Saute indicator	⑮ Menu selection and power/time switch
⑨ Hot pot indicator	⑯ On/Off
⑩ Steam/Stew indicator	⑰ Timer indicator
⑪ Roast indicator	⑱ Preset/Timer
⑫ Soup/Congee indicator	⑲ Childlock
⑬ Display screen	⑳ Cooking temperature/power

#### Cooking functions overview

Cooking mode	Default cooking power/temperature	Cooking power regulation
Fry (👉)	1400 W/ 200°C	100-1400W
Saute (👉)	1400 W/ 200°C	100-1400W

Hot pot (👉)	2100 W/ 280°C	100-2100W
Steam/Stew (👉)	1800 W/ 240°C	100-2100W
Roast (👉)	1400 W/ 200°C	100-1400W
Soup/Congee (👉)	1000 W/ 160°C	100-2100W

Cooking mode	Cooking time regulation	Preset time regulation
Fry (👉)	0-120 minutes	N/A
Saute (👉)	0-120 minutes	N/A
Hot pot (👉)	0-120 minutes	N/A
Steam/Stew (👉)	0-120 minutes	0-24 hours
Roast (👉)	0-120 minutes	N/A
Soup/Congee (👉)	0-120 minutes	0-24 hours

### 3 Before first use

Remove all packaging materials of the induction cooker.

### 4 Preparing the appliance for use (fig. 4)

- Place the appliance on a dry, stable and level surface. (fig. 4-1)
- Make sure there is at least 10cm free space around the appliance to prevent overheating. (fig. 4-2)
- Always place the cookware on the cooking zone during cooking. (fig. 4-3)
- Make sure you use cookware of the correct types and sizes (refer to the table below).

### Recommended types and sizes of cookware (fig. 5)

Material	Cookware with a bottom made of iron or magnetic stainless steel.
Shape	Cookware with a flat bottom.
Size	Cookware with a bottom diameter of 10-23cm, depending on the cooking mode
Weight	Cookware with a weight of up to 15kg (including contents)

### 5 Using the induction cooker (fig. 6)

There are 6 preset cooking modes: fry, saute, hot pot, steam/stew, roast and soup/congee.


- Follow the steps in "Preparing the appliance for use".
- Plug in the induction cooker. (fig. 6-1)

- 3 Tap the On/Off icon (🔌). (fig. 6-2)
  - ➡ the On/Off indicator lights up.
  - ➡ The induction cooker beeps.
  - ➡ All indicators light up once and then go off.
  - ➡ The induction cooker stays in standby mode.
- 4 Tap the menu icon (⌂) repeatedly until the desired cooking mode is selected. (fig. 6-3)
  - ➡ The cooking mode indicator lights up and the induction cooker starts heating up the cookware.
  - ➡ The remaining cooking time and cooking power or temperature are displayed on the screen in sequence.
- 5 When the cooking is finished, tap the On/Off icon (🔌) to stop the cooking process, and the induction cooker switches to standby mode.
- 6 Unplug the induction cooker after the fan stops working. (fig. 6-4)

### Using the timer

The induction cooker provides you with flexible control over the cooking time you want the appliance to operate in different cooking modes.

- 1 Follow the steps in "Preparing the appliance for use".
- 2 Plug in the induction cooker. (fig. 6-1)
- 3 Tap the On/Off icon (🔌). (fig. 6-2)
- 4 Tap the menu icon (⌂) repeatedly until the desired cooking mode is selected. (fig. 6-3)
- 5 Tap the Preset/Timer icon (⌚) until the timer indicator lights up. (fig. 6-6)
- 6 Slide your finger clockwise on the circular Power/Time switch area to increase the cooking time by 5 minutes; slide anti-clockwise to decrease the cooking time by 5 minutes (fig. 6-5). You can also tap the increase **+** or decrease **-** icon to adjust the cooking time by the increment of 1 minute. (fig. 6-7)
- 7 When the cooking time has elapsed, the induction cooker beeps and turns off automatically.


 Note

- After you have selected the cooking time, wait for a few seconds before the induction cooker automatically confirms it.

### Preset time for delayed cooking

With the preset funtion, you can set the time at which you want the appliance to start cooking in steam/stew and soup/congee modes.


- 1 Follow the steps in "Preparing the appliance for use".
- 2 Plug in the induction cooker. (fig. 6-1)
- 3 Tap the On/Off icon (🔌). (fig. 6-2)
- 4 Tap the menu icon (⌂) repeatedly until the desired cooking mode is selected. (fig. 6-3)
- 5 Tap the Preset/Timer icon (⌚) until the preset indicator lights up. (fig. 6-8)
- 6 Slide your finger clockwise on the circular Power/Time switch area to increase the preset time by 20 minutes; slide anti-clockwise to decrease the preset time by 20 minutes (fig. 6-5). You can also tap the increase **+** or decrease **-** icon to adjust the preset time by the increment of 1 minute. (fig. 6-7)
- 7 When the preset time has elapsed, the induction cooker beeps and starts working automatically.

 Note

- After you have selected the preset time, wait for a few seconds before the induction cooker automatically confirms it.

### Setting up child lock

- When the induction cooker is switched on, long tap the childlock icon (🔒) for 3 seconds to activate childlock.
- To deactivate childlock, long tap the child lock icon (🔒) for 3 seconds again.

 Note

- When childlock is activated, only Childlock and On/Off are responsive.

### 6 Cleaning (fig. 7)

- 1 Unplug the appliance and let it cool down.
- 2 Clean the appliance with a damp cloth (fig. 7-1) and, if necessary, with some mild cleaning agent (fig. 7-2).
- 3 Clean the air outlets with a brush. (fig. 7-3)

### 7 Environment

Do not throw away the appliance with the normal household waste at the end of its life, but hand it in at an official collection point for recycling. By doing this, you help to preserve the environment.



### 8 Guarantee and service

If you need service or information or if you have a problem, please visit the Philips website at [www.philips.com](http://www.philips.com) or contact the Philips Consumer Care Centre in your country (you will find its phone number in the worldwide guarantee leaflet). If there is no Consumer Care Centre in your country, go to your local Philips dealer.

### 9 Troubleshooting

If your induction cooker does not function properly or if the cooking quality is insufficient, consult the table below. If you are unable to solve the problem, contact a Philips service centre or the Consumer Care Centre in your country.

Problem	Solution
The On/Off icon (🔌) does not respond	There is a connection problem. Check if the induction cooker is connected to the mains and if the plug is inserted firmly into the wall socket
When I tap the menu icon, the light of the selected mode does not go on.	The light is defective. Take the appliance to your Philips dealer or a service centre authorised by Philips.
E5 or E6 is displayed on the screen	Check if the voltage is too low or too high. Check if the power cord or power socket is too hot. Check if too many appliances are plugged to the same connector.
E0, E1, E2, E3, E4, E8 or E9 is displayed on the screen.	The induction cooker has malfunctions. Take the appliance to a Philips dealer or a service centre authorised by Philips.
The induction cooker stops working or turns off automatically.	The induction cooker has been idle for more than 2 hours. Check if the air inlet and outlets are covered. Temperature around the induction cooker is too high.

### 繁體中文

## 1 您的電磁爐

恭喜你購買 Philips 產品，歡迎來到 Philips 世界！要享受 Philips 為您提供的全面支援，請在以下網站 [www.philips.com/welcome](http://www.philips.com/welcome) 註冊您的產品。

## 2 包裝盒內容（圖 1）

電磁爐主裝置  
用戶手冊  
保用證

湯鍋  
安全小冊子

### 概覽（圖 2）

① 微晶玻璃電磁爐面板	⑤ 控制面板
② 烹飪區	⑥ 排氣口
③ 進氣口	⑦ 電源線

### 控制鍵概覽（圖 3）

⑧ 煎炒指示燈	⑭ 預約指示燈
⑨ 快炒指示燈	⑮ 功能選擇及火力/時間調節
⑩ 火鍋指示燈	⑯ 開/關
⑪ 蒸煮指示燈	⑰ 定時指示燈
⑫ 鐵板燒指示燈	⑱ 預約/定時
⑬ 湯/粥指示燈	⑲ 兒童安全鎖
⑳ 顯示屏幕	㉑ 烹調溫度/火力指示燈

### 烹調功能概覽

烹飪模式	預設溫度/火力	烹飪火力調控
煎炒 (🔥)	1400 瓦/ 200°C	100-1400 瓦
快炒 (🔥)	1400 瓦/ 200°C	100-1400 瓦
火鍋 (🍲)	2100 瓦/ 280°C	100-2100 瓦
蒸煮 (🍲)	1800 瓦/ 240°C	100-2100 瓦
鐵板燒 (🍲)	1400 瓦/ 200°C	100-1400 瓦
湯/粥 (🍲)	1000 瓦/ 160°C	100-2100 瓦

烹飪模式	可定時時間調控	預約烹調時間
煎炒 (🔥)	0-120 分鐘	N/A
快炒 (🔥)	0-120 分鐘	N/A
火鍋 (🍲)	0-120 分鐘	N/A
蒸煮 (🍲)	0-120 分鐘	0-24 小時
鐵板燒 (🍲)	0-120 分鐘	N/A
湯/粥 (🍲)	0-120 分鐘	0-24 小時

## 3 首次使用前

拆去電磁爐的所有包裝材料。

## 4 準備使用電磁爐（圖 4）

- 1 將電磁爐放置於穩固、平坦的水平表面上。（圖 4-1）
- 2 確保機器周圍 10 公分內沒有其他物體，以防機器過熱。（圖 4-2）
- 3 烹飪時請將廚具放置在烹飪區內。（圖 4-3）
- 4 確保使用正確種類和大小的廚具，詳見下表。

## 建議的廚具種類和大小（圖 5）


物料	底部使用鐵或電磁不銹鋼製作的廚具。
外形	有平底廚具。
尺寸	底部直徑介於 10 至 23 公分的廚具，依烹飪模式而定。
重量	至多重 15 公斤的廚具（包括內容物）

## 5 使用電磁爐（圖 6）

- 本電磁爐共有 6 種預約烹飪模式：煎炒、快炒、火鍋、蒸煮、鐵板燒及湯/粥。
- 1 按照「準備使用電器」的步驟進行操作。
  - 2 接通電磁爐電源。（圖 6-1）
  - 3 輕觸開/關圖標 (🔌)。（圖 6-2）
    - ➡ 開/關指示燈亮起。
    - ➡ 電磁爐發出嗶聲。
    - ➡ 所有指示燈亮起一下，然後熄滅。
    - ➡ 電磁爐處於待機模式。
  - 4 重複輕觸功能選擇圖標 (⌂)，選擇您想使用的烹飪模式。（圖 6-3）
    - ➡ 烹飪模式指示燈亮起，電磁爐開始加熱廚具。
    - ➡ 剩餘烹調時間和烹調火力或溫度會順序在屏幕上顯示。
  - 5 完成烹調後，輕觸開/關圖標 (🔌) 停止烹調程序，電磁爐便會轉至待機模式。
  - 6 等風扇停止運轉後，拔除電磁爐的插頭。（圖 6-4）

### 使用定時功能


- 電磁爐讓您在不同烹飪模式下靈活控制烹調時間。
- 1 按照「準備使用電器」的步驟進行操作。
  - 2 接通電磁爐電源。（圖 6-1）
  - 3 輕觸開/關圖標 (🔌)。（圖 6-2）
  - 4 重複輕觸功能選擇圖標 (⌂)，選擇您想使用的烹飪模式。（圖 6-3）
  - 5 輕觸預約/定時圖標 (⌚)，直到定時指示燈亮起。（圖 6-6）
  - 6 在火力/時間調節區域上按順時針方向滑動手指加長烹調時間 5 分鐘；按逆時針方向滑動手指縮短烹調時間 5 分鐘（圖 6-5）。您亦可輕觸增加 **+** 或減少 **-** 圖標，以 1 分鐘為單位調校烹調時間。（圖 6-7）
  - 7 設定的烹調時間結束時，您會聽到蜂鳴提示，電磁爐會自動關閉。

 提示

- 選好烹飪時間後，靜候數秒，電磁爐將會自動確認。

### 預約時間延時烹飪


- 有了預約功能，您可在蒸煮及湯/粥模式下設定開始烹調的時間。
- 1 按照「準備使用電器」的步驟進行操作。
  - 2 接通電磁爐電源。（圖 6-1）
  - 3 輕觸開/關圖標 (🔌)。（圖 6-2）
  - 4 重複輕觸功能選擇圖標 (⌂)，選擇您想使用的烹飪模式。（圖 6-3）
  - 5 輕觸預約/定時圖標 (⌚)，直到定時指示燈亮起。（圖 6-8）
  - 6 在火力/時間調節區域上按順時針方向滑動手指加長預約時間 20 分鐘；按逆時針方向滑動手指縮短預約時間 20 分鐘。您亦可輕觸增加 **+** 或減少 **-** 圖標，以 1 分鐘為單位調校預約時間。（圖 6-7）
  - 7 預約時間到時，您會聽到蜂鳴提示，電磁爐會自動開始運作。

 提示

- 選好預約時間後，靜候數秒，電磁爐將會自動確認。

### 設定兒童鎖

- 電磁爐工作時，輕觸童鎖圖標 (🔒) 3 秒鐘，進入兒童鎖模式。
- 如需退出兒童鎖模式，再次輕觸童鎖圖標 (🔒) 3 秒鐘即可。

 提示

- 兒童鎖模式下，只有童鎖和開關圖標有反應。

## 6 清潔（圖 7）

- 1 拔除產品插頭，讓產品冷卻。
- 2 請使用濕布清潔本產品（圖 7-1）；如有需要，請使用溫和的清潔劑（圖 7-2）。
- 3 使用毛刷清潔排氣口。（圖 7-3）

## 7 環境

請勿在本產品使用壽命結束後當作一般家庭垃圾廢棄，應交給官方回收站作循環再用。這樣做有助保護環境。



## 8 保障及服務

如果您需要資料或有疑問，請前往 Philips 網站 [www.philips.com](http://www.philips.com)，或聯絡您的國家的 Philips 顧客服務中心（您會在全球保障小冊子上找到其電話號碼）。如果您的國家沒有顧客服務中心，請前往當地的 Philips 經銷商。

## 9 故障排除

若電磁爐無法正確運作，或電磁爐烹飪效率不佳，請參照下表。若您無法解決問題，請聯絡飛利浦服務中心或您所在國家的顧客服務中心。

問題	解決方案
開/關圖標 (🔌) 沒有響應	連接有誤。檢查電磁爐是否有連接主電源，插頭和插座是否有鬆脫。
輕觸功能選擇圖標後，已選模式的燈沒有亮起。	指示燈損壞。請將產品拿至飛利浦經銷商或飛利浦認可的服務中心。
熒幕上顯示E5或E6	檢查電壓是否太低或太高。 檢查電源線或電源插座是否過熱。 檢查同一連接器上是否連接太多插頭。
屏幕上顯示E0、E1、E2、E3、E4、E8或E9。	電磁爐故障。將本產品帶往您的 Philips 經銷商或得到認可的 Philips 維修中心。
電磁爐停止運轉或自動關閉。	電磁爐閒置超過 2 小時。 檢查進氣口或排氣口是否被遮蓋住。 電磁爐周圍的溫度過高。