

To use the appliance, put the plug in the wall socket and press down the toasting lever. Please note that the toasting lever will only stay down if the appliance is connected to the mains!

**Important**

- Read these directions for use carefully before using the appliance and save them for future reference.
- Check if the voltage indicated on the bottom of the appliance corresponds to the mains voltage in your home before you connect the appliance.
- Connect the appliance to an earthed wall socket.
- Avoid touching the metal parts as the toaster gets hot during use.
- If a slice of bread gets stuck inside the toaster, please remove the plug from the wall socket first and then carefully remove the slice from the toaster. (Take care not to damage the heating elements while removing the slice of bread. Never use a metal object for this purpose.)
- Bread may burn. Therefore, toasters must not be used under or near curtains or other combustible materials. Never leave the appliance unattended when it is switched on.
- Do not place any objects or rolls to be heated up directly on top of the toaster as this could cause damage to the appliance.
- We advise you not to use the toaster in the presence of birds.
- When cleaning the toaster, first remove the plug from the wall socket and let the appliance cool down. Never immerse the toaster in water. Wipe it clean with a damp cloth.
- If the mains cord of this appliance is damaged, it must always be replaced by Philips or a service centre authorised by Philips, as special tools and/or parts are required.
- The toaster is intended for household use only.
- The toaster is only intended for toasting bread. Using the toaster for other purposes such as drying clothes may cause damage to the appliance.
- Do not place the dust cover on top of the toaster when the appliance is switched on or when it is still hot as this could cause damage.

**Using the appliance for the first time**

When you use the toaster for the first time, we strongly recommend that you let the toaster complete several toasting cycles without slices of bread in it at the highest toasting setting in a ventilated room to prevent the appliance from giving off unpleasant odours. Allow the toaster to cool down in between the toasting cycles. We advise you not to use the appliance in the presence of birds.

**Operation** (see illustrations)

Your toaster has been equipped with a 0 setting on the browning selector. When the selector is in this position, the toasting lever will pop up and cannot be operated. We advise you to set the browning selector to the 0 setting when the appliance is not in use. This will ensure a measure of safety by preventing accidental turning on of the toaster (e.g. by young children).

- (Type HD2520): Insert one or two slices of bread (fig 1a).
  - (Type HD2521): Insert one or two slices of bread (fig 1b).
  - For optimal browning results, always put the slices of bread in the centre of the slots as much as possible.
  - Before switching the appliance on, select the desired browning degree (fig 2a).
    - Select setting 1 or 2 for light browning or for toasting only one slice or dry bread.
    - Select setting 3, 4 or 5 for medium browning.
    - Select setting 6 for darker browning.
    - Select setting 7 for toasting frozen bread (fig. 2b).
 (When you are toasting a series of slices, you do not have to re-adjust the setting).
  - To lower the slices into the toaster, press down the toasting lever (fig 3).
  - When ready, the toast pops up and the heating elements are switched off automatically (fig. 4).
- You can interrupt the toasting process by pushing up the toaster lever manually or by setting the browning selector to 0 position.

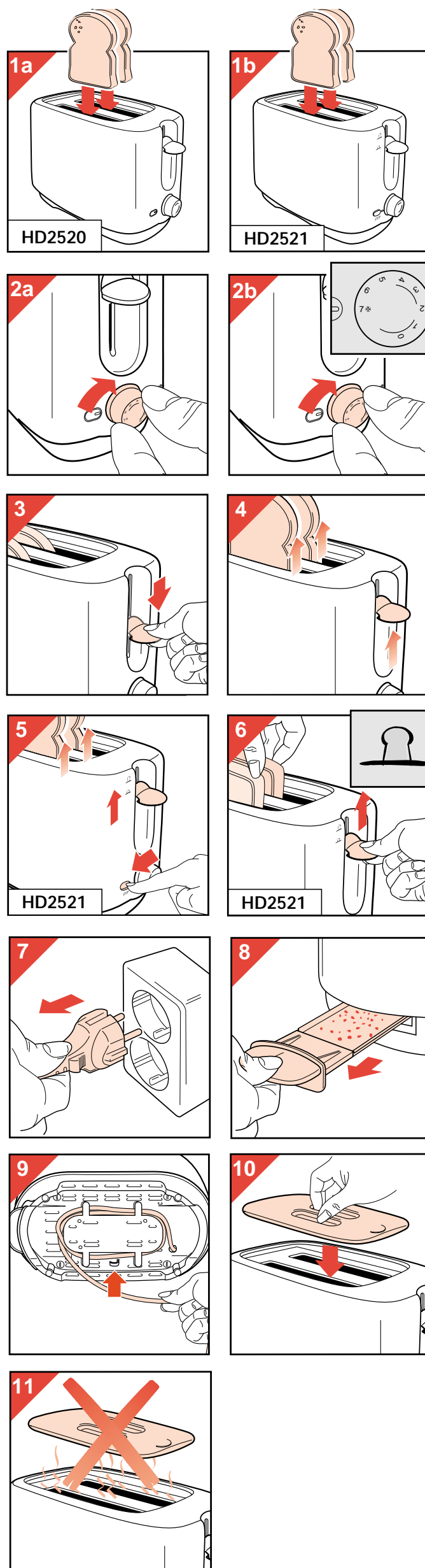
- (Type HD2521): You can interrupt the toasting process by pressing the 'Stop' button. The toasting lever is released automatically (fig 5).
- (Type HD2521): If necessary, you can lift the toasting lever a little further to remove smaller slices of bread (fig 6).

**Cleaning and storage**

- Removing crumbs from the toaster:
  - First remove the mains plug from the wall socket (fig. 7).
  - Pull out the crumb tray (fig. 8).**Do not remove crumbs by holding the appliance upside down and shaking it.**
  - After use, you can store the mains cord by winding it up (fig. 9).

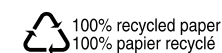
**Placing the dust cover (after use)**

After use, you can place the dust cover on top of the toaster (fig 10). Do not place the dust cover on top of the toaster when the appliance is switched on or when it is still hot as this could cause damage (fig 11).



# PHILIPS

## HD 2521/20



www.philips.com

4222 001 93202

## 繁體中文

若要使用本產品，應先把電源插頭插入牆壁插座，然後按下烤麵包機的壓桿。請注意，只有在本產品接通電源後，壓桿才會保持在壓下位置。

### 重要事項

- 在使用烤麵包機之前，請先仔細通讀使用說明，並加以保存，以備今後參考。
- 在接通電源之前，請先檢查本產品底部顯示的電壓是否與您家中的電壓相符合。
- 將產品插入接地良好的牆壁插座。
- 請不要觸摸金屬部件，因為烤麵包機在使用時會很燙。
- 如果吐司卡在烤麵包機裡面，請拔下電源插頭，然後小心地取出吐司。  
(在取出吐司時，小心不要損壞加熱部件。切勿使用金屬物件取出吐司。)
- 吐司可能會烤焦。因此烤麵包機不可在窗簾下或窗簾旁或在其他易燃材料旁使用。在開啟本產品的電源後，不應無人照管。
- 不可以把任何物品或圓麵包直接放在烤麵包機上面加熱。這樣會損壞產品。
- 我們建議您不要在有鳥的地方使用本產品。
- 在清潔本產品時，先拔下電源插頭，任其自然冷卻。切勿將烤麵包機浸入水中。使用濕布把它擦拭乾淨。
- 如果產品的電源線受到損壞，則必須由飛利浦公司或飛利浦公司指定的服務中心修理，因為這需要特別的工具及(或)部件。
- 烤麵包機僅適用於家庭使用。
- 烤麵包機僅適用於烘烤麵包。如果用作其他用途，如烘衣服，將會損產品。
- **在本產品的電源開啟時，或如果它還很燙，不可把防塵蓋放在烤麵包機上。這樣會導致損壞。**

### 第一次使用本產品

在您第一次使用本產品時，我們強烈建議，您先不把吐司放入烤麵包機，而是把它的功率設定撥到最高點，在通風良好的房間完成幾個烘烤循環，這樣它就不會再發出令人不舒服的氣味。在每個烘烤循環之間應讓烤麵包機自然冷卻。我們建議您不要在有鳥的地方使本產品。

### 操作 (參見圖示)

烤麵包機的綠色選擇器上有 0 設置。當選擇器處於這一位置時，烤麵包機的壓桿會跳起，不再工作。我們建議您在不使用烤麵包機時把選擇器設置到 0。這樣將確保安全措施，防止意外地開啟烤麵包機 (例如由兒童開啟)。

- (HD2520 型)：插入一片或兩片吐司 (圖 1a)。
- (HD2521 型)：插入一片或兩片吐司 (圖 1b)。
- 為了取得最佳棕黃色烘烤效果，應盡可能把吐司放在槽口的中央部份。
- 在開啟烤麵包機之前，選擇需要的烘烤效果 (圖 2a)。
  - 選擇設置 1 或 2，取得淡棕黃色效果，或只烘烤一片吐司或乾麵包。
  - 選擇設置 3，4 或 5，取得中等棕黃色效果。
  - 選擇設置 6，取得深棕色效果。
  - 選擇設置 7，烘烤冷凍的吐司 (圖 2b)。
- (在連續烘烤吐司時，不必調整設置)。
- 若要把吐司放到烤麵包機裡面，可按下壓桿 (圖 3)。
- 吐司在烘烤完畢後會自動彈起，加熱部件會自動斷電 (圖 4)。
- 若要中止烘烤，您可以用手把壓桿抬起，或者把綠色選擇器設到 0 位置。
- (HD2521 型)：若要中止烘烤，您可以按“停止”(Stop) 按鈕。壓桿會自動鬆脫 (圖 5)。
- (HD2521 型)：如有必要，把壓桿再抬起一點，取出較小的吐司 (圖 6)。

### 清理及存放

- 把麵包屑從烤麵包機中取出：
  - 先把插頭從牆壁插座中拔出 (圖 7)。
  - 拔出麵包屑托盤 (圖 8)。
  - 不可把烤麵包機顛倒後搖晃倒出麵包屑。
  - 使用後，可把電源線卷起存放 (圖 9)。

### (使用後) 安放防塵蓋

使用本產品後，可以把防塵蓋蓋在烤麵包機上 (圖 10)。

不可在烤麵包機處於開啟狀態時或者仍然很燙時蓋上防塵蓋。這樣會造成損壞 (圖 11)。

