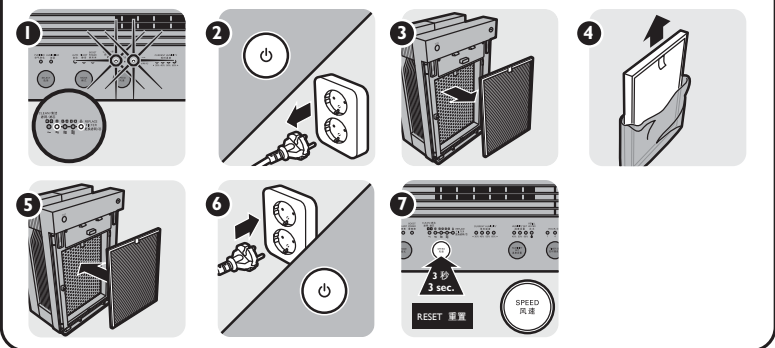
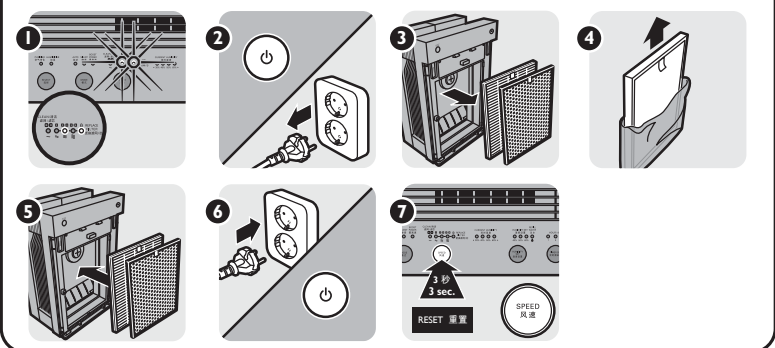


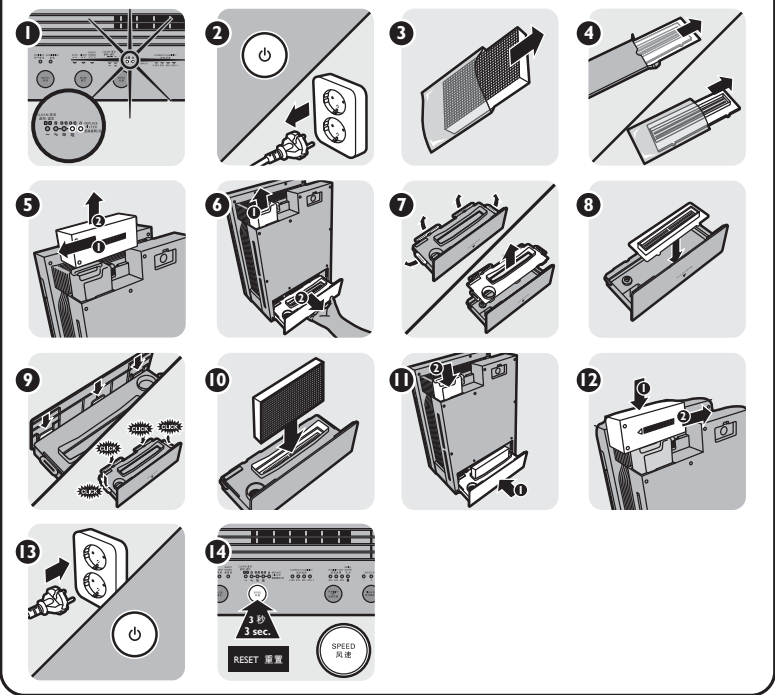
Replacing filter 2 滤网 2 滤网更换提示



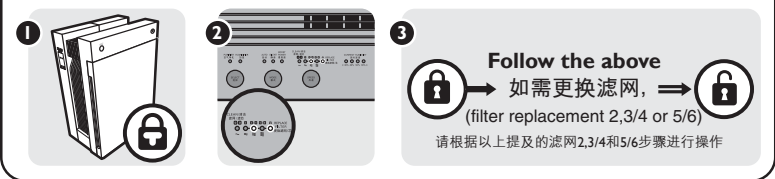
Replacing filters 3 and 4 滤网 3/4 滤网更换提示



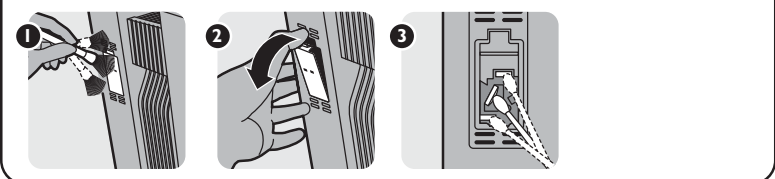
Replacing filters 5 and 6 滤网 5/6 滤网更换提示



HealthAirProtect Lock 智能锁



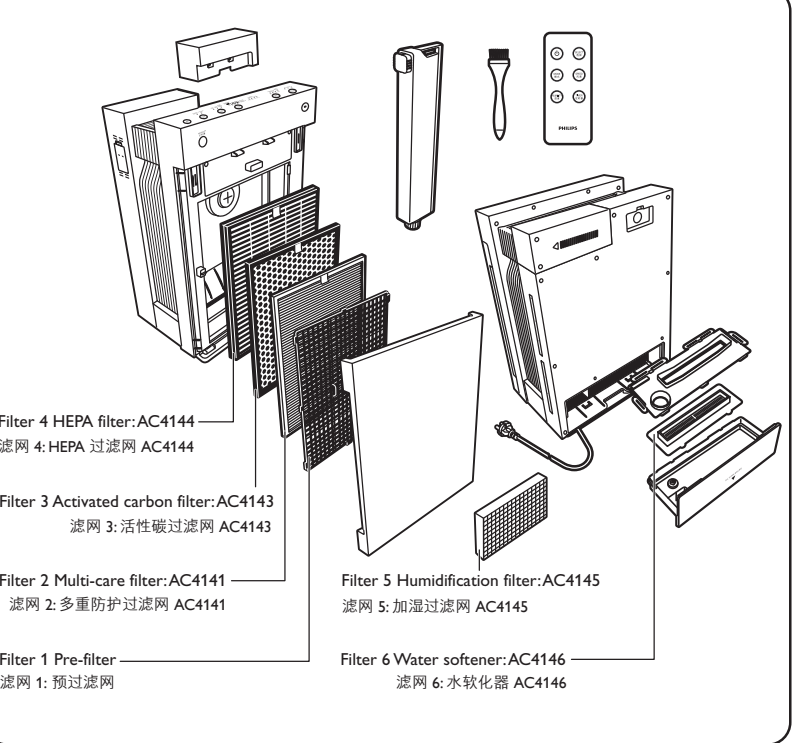
Cleaning air quality sensor (every 2 months) 清洁微粒传感器 (每 2 个月一次)



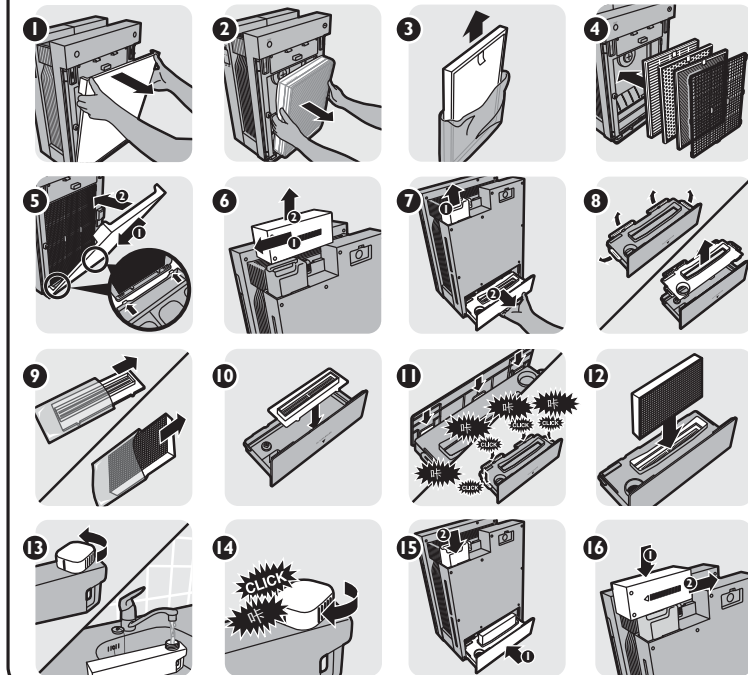
Caution! 注意

- Prevent water from spilling out of the water tank!**
- Empty the water tank and water bucket before you move the appliance.
 - Do not tilt or move the appliance when the water tank and water bucket contain water.
 - Always place the appliance on a stable and horizontal surface.
- 防止水从水箱中溢出
- 在您移动该产品前，请清空水箱及水盒
 - 当水箱或水盒中有水时，请勿倾斜或移动该产品
 - 请将该产品一直放置在水平表面上

Quick Start Guide / 快速指导手册 AC4083

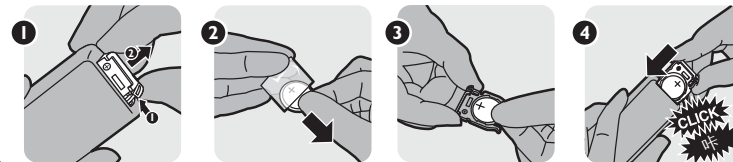


First use and filling water bucket 首次使用, 注满水箱

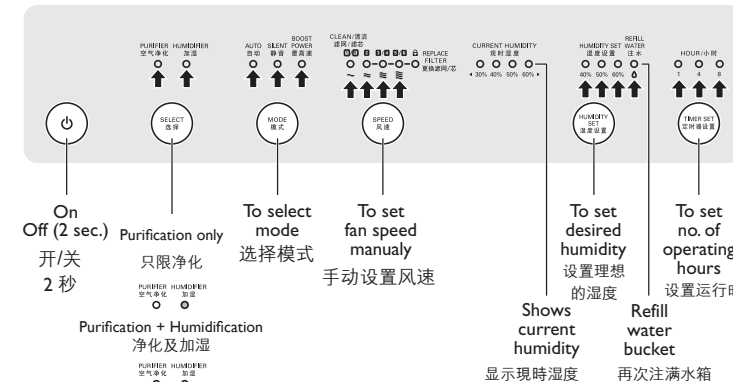


2

Inserting battery in remote control 在遥控器上安装电池

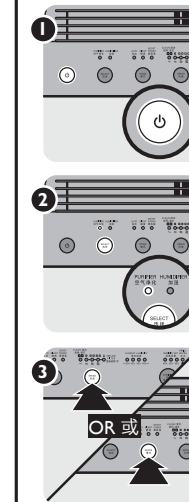


Using the appliance 使用说明

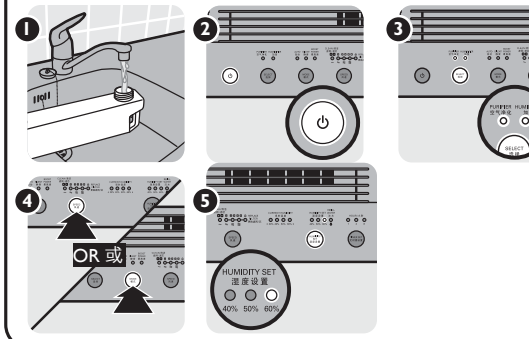


3

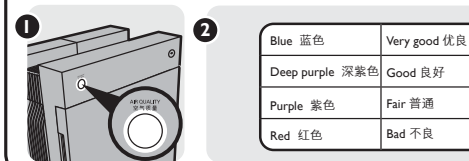
Air purification 空气净化



Air purification combined with air humidification 空气净化器与加湿机相结合

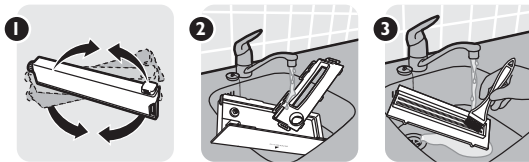


Air quality indicator 空气质量指示灯

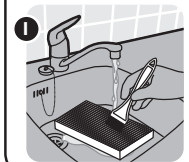


4

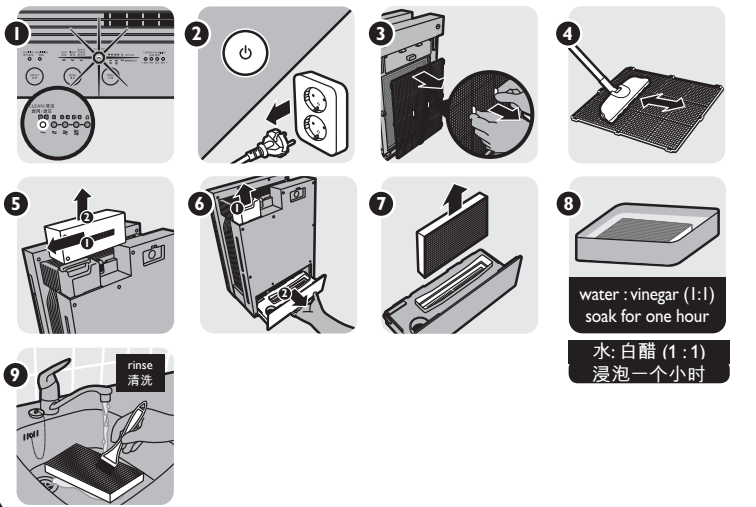
Daily cleaning 日常清洁



Weekly cleaning 每周清洁



Cleaning filters 1 and 5 清洁滤网 1 及 5



5