

HL1660

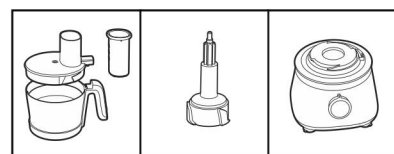


User manual

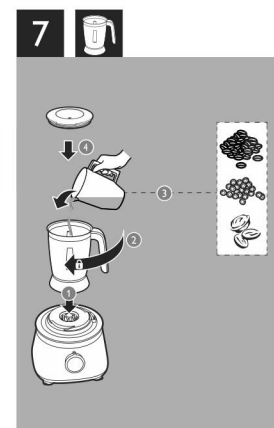
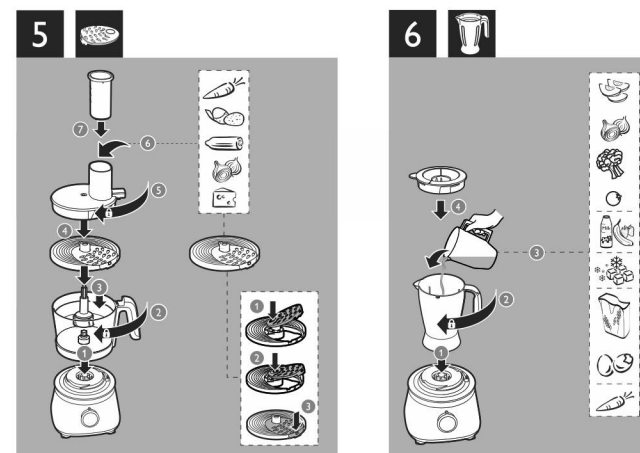
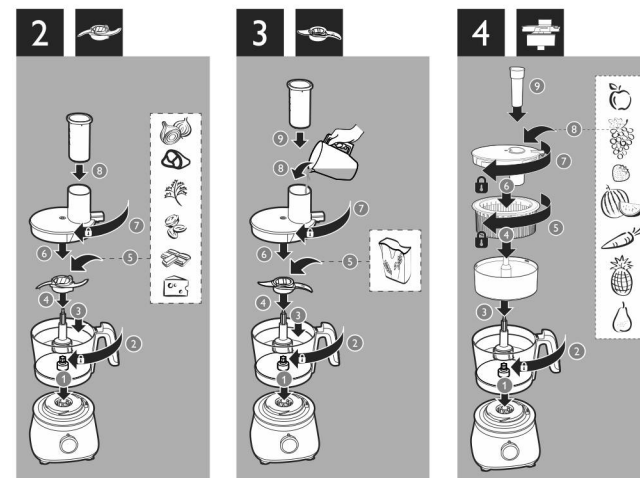
PHILIPS



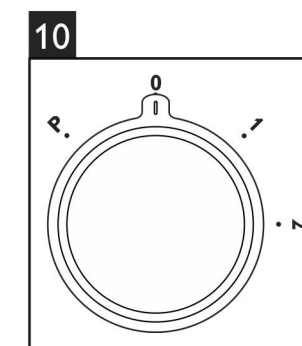
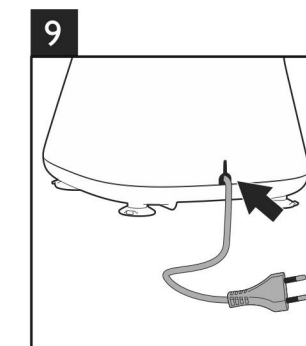
1					
				(MAX)	
	Onion	5 x 1 sec	500 g	P	
	Meat	5 x 1 sec	500 g	P/2	
	Fresh herbs	30 sec	50 g	2	
	Almond	60 sec	250 g	1	
	Chocolate	45 sec	250 g	2	
	Cheese	30 sec	200 g	2	
	Beetroot	30 sec	300 g	2	
	Carrots	30 sec	300 g	2	
	Greens/Spinach	30 sec	300 g	2	
	Flour	2-3 min	300 g	1	
			260 ml		
	Carrot	30 sec	500 g	1	
	Cheese	30 sec	200 g	1	
	Cucumber	30 sec	2 pcs	1	
	Potato	30 sec	500 g	1	
	Onion	30 sec	300 g	1	
	Coffee bean	30 sec	40 g	2	
	Pepper	30 sec	70 g	2	
	Almond	30 sec	40 g	2	
	Pancake batter	1 min	1 L	2	
	Urad dal	1.5 min	175 g	2	
	Smoothie	1 min	1 L	2	
	Soup	1 min	1 L	2	
	Ice	P x 9	6 x	P	
	Carrot juice	3 min	500 g / 600 ml	2	
	Milkshake	1 min	750 ml	1+2	
	Tomato puree	1 min	250 g	1+2	
Spinach puree	1 min	500 g	1+2		
	Fresh fruit	60-90 sec	500 g	2	



4215 303 71631



8						
	✓	✓	✓		✓	✓
	✓	✓	✓		✓	✓
	✓	✓	✓		✓	✓
	✓	✓	✓		✗	✗
	✓	✓	✓		✗	✗
	✓	✓	✓		✗	✗



English

1 Important

Read this user manual carefully before you use the appliance, and save the user manual for future reference.

Danger

- Do not immerse the motor unit in water nor rinse it under the tap.

Warning

- Never use your fingers or an object to push ingredients into the feeding tube while the appliance is running. Only use the pusher.
- Before you connect the appliance to the power, make sure that the voltage indicated on the bottom of the appliance corresponds to the local power voltage.
- In order to avoid a hazard due to inadvertent resetting of the thermal cutout, this appliance must not be supplied through an external switching device, such as a timer, or connected to a circuit that is regularly switched on and off by the utility.
- Do not use the appliance if the power cord, the plug, protecting cover, rotating sieve or any other parts are damaged or has visible cracks.
- If the power cord is damaged, you must have it replaced by Philips, a service center authorized by Philips, or similarly qualified persons to avoid a hazard.

- This appliance shall not be used by children. Keep the appliance and its cord out of reach of children.
- This appliance can be used by persons with reduced physical, sensory or mental capabilities or lack of experience and knowledge if they have been given supervision or instruction concerning use of the appliance in a safe way and if they understand the hazards involved.
- For their safety, do not allow children to play with the appliance.
- Never let the appliance run unattended.
- If food sticks to the wall of the blender jar or bowl, switch off the appliance and unplug it. Then use a spatula to remove the food from the wall.
- Be careful when you are emptying the bowl, handle or clean the discs, the blade units and the juicer sieve. The cutting edges are very sharp.
- Do not touch the blades, especially when the appliance is plugged in. The blades are very sharp.
- If the blades get stuck, unplug the appliance before you remove the ingredients that block the blades.
- Be careful if hot liquid is poured into the food processor or blender as it can be ejected out of the appliance due to a sudden steaming.
- This appliance is intended for household use only.

Caution

- Never switch off the appliance by turning the blender jar, the bowl, or their lids. Always switch off the appliance by turning the speed selector to 0 or OFF.
- Unplug the appliance immediately after use.
- Always wait until the moving parts stop running, then switch off and unplug the appliance before opening the lid and reaching into any of the parts that move in use.
- Always switch off and unplug the appliance if it is left unattended, and before assembling, disassembling, cleaning and changing accessories, or approaching parts that move in use.
- Thoroughly clean the parts that come into contact with food before you use the appliance for the first time. Refer to the instructions and table for cleaning given in this manual.
- Never use any accessories or parts from other manufacturers that Philips does not specifically recommend. If you use such accessories or parts, your guarantee becomes invalid.
- Do not exceed the maximum level indication on the bowl or the jar. Follow the quantities, processing time and speed as indicated in the user manual.
- Let hot ingredients cool down (< 80°C) before processing them.
- Always let the appliance cool down to room temperature after each batch that you process.
- Certain ingredients such as carrots may cause discolorations on the surface of the parts. This does not have a negative effect on the parts. The discolorations usually disappear after some time.

Electromagnetic fields (EMF)

This Philips appliance complies with all standards regarding electromagnetic fields (EMF). If handled properly and according to the instructions in this user manual, the appliance is safe to use based on scientific evidence available today.

Recycling

Your product is designed and manufactured with high quality materials and components, which can be recycled and reused. When you see the crossed-out wheel bin symbol attached to a product, it means the product is covered by the European Directive 2002/96/EC. Never dispose of your product with other household waste. Please inform yourself about the local rules on the separate collection of electrical and electronic products. The correct disposal of your old product helps prevent potentially negative consequences on the environment and human health.



2 Introduction

Congratulations on your purchase and welcome to Philips! To fully benefit from the support that Philips offers, register your product at www.philips.co.in/welcome. This appliance is equipped with a built-in safety lock. You can only switch on the appliance after you correctly assemble the following parts on the motor unit:

- the food processor bowl and its lid, or
- the blender jar and its lid, or
- the metal jar and its lid

If these parts are assembled correctly, the built-in safety lock is unlocked. For recipes, go to www.philips.co.in/Kitchen

3 Overload protection

The food processor is fitted with an automatic power shut off mechanism to avoid motor burning due to overloading. If the food processor stops due to overloading, the red knob at the bottom will come out.

To reset the food processor in case of overloading, follow the steps below:

- 1 Switch off the food processor.
- 2 Remove excess load from the bowl or jar.
- 3 Wait for 2 to 3 minutes.
- 4 Press the red knob and start the food processor again.

4 Food processor

Blade unit

Before you start, make sure that you assemble according to Fig. 2. You can use the blade unit to chop, mix, blend, or puree ingredients.

Caution

- Do not use the blade unit to chop hard ingredients, like coffee beans, turmeric, nutmeg, and ice cubes, as this may cause the blade to get blunt.

Note

- Do not let the appliance run too long when you chop (hard) cheese or chocolate. Otherwise these ingredients become too hot, start to melt, and turn lumpy.
- Precut large pieces of food into pieces of approx. 3 x 3 x 3 cm.

Tip

- When you chop onions, turn the speed selector to **P** a few times to prevent the onions from becoming too finely chopped.
- How to remove food that sticks to the blade or to the inside of the bowl? 1. Switch off the appliance, and then unplug it. 2. Remove the lid from the bowl. 3. Remove the ingredients from the blade or from the side of the bowl with a spatula.

Kneading accessory

Before you start, make sure that you assemble according to Fig. 3. You can use the kneading accessory to knead yeast dough for bread and pizzas. You need to adjust the amount of liquid to form the dough according to the humidity and temperature condition.

Disc with inserts

Before you start, make sure you pick your desired insert from following and assemble according to Fig. 5.

	Name	Purpose
	Slicing insert	For slicing ingredients
	Shredding insert	For shredding ingredients into small strips

Caution

- Be careful when you handle the slicing blade of disc insert. It has a very sharp cutting edge.
- Never use the disc insert to process hard ingredients, like ice cubes.
- Do not exert too much pressure on the pusher when you press ingredients into the feed tube.

Note

- Precut large ingredients into chunks that fit in the feeding tube.

Follow the steps below to assemble the disc inserts.

- 1 Place the opening of the insert over the shaft of the insert holder.
- 2 Push the opening of the insert over the projection on the shaft.
- 3 Press the insert onto the insert holder until it locks in position with a click.

5 Eco juicer

Before you start, make sure that you assemble according to Fig. 4.

The Eco juicer jar is intended for juicing fruits.

After using once, let the appliance cool down before you can use it again.

Caution

- Do not exert too much pressure on the pusher when you press ingredients into the feed tube.
- Do not fill the bowl beyond the maximum indication.

Note

- Before processing ingredients, remove all seeds and pips from plums, apricots, peaches, and cherries, remove all tough skins from pineapples, melons etc.
- Cut ingredients into smaller pieces to pass through chute.
- You can juice a wide range of fruits and vegetables in this juicer. However, it is not recommended to juice fibrous, starchy or very hard fruits and vegetables like mango, cheeku, banana, amla, aloe vera, sugarcane and wheatgrass.

6 Blender

Before you start, make sure you assemble according to Fig. 6

The blender is intended for:

- Blending fluids, like dairy products, sauces, fruit juices, soups, mixed drinks, and shakes,
- Mixing soft ingredients, like pancake batter;
- Pureeing cooked ingredients, like baby food.

Note

- Do not exert too much pressure on the handle of the blender jar.
- Never open the lid to put your hand or any object in the jar while the blender is running.
- Always assemble the sealing ring onto the blade unit before you attach the blade unit to the blender jar.
- To add liquid ingredients during processing, pour them into the blender jar through the feeding hole.
- Precut solid ingredients into small pieces before you process them.
- If you want to prepare a large quantity, process small batches of ingredients instead of a large quantity at once.
- Use cooked ingredients when you blend a soup.
- To avoid spillage: When you process a liquid that is hot or tends to foam (for example, milk), do not put more than 1 liter of liquid in the blender jar.
- If you are not satisfied with the result, switch off the appliance and stir the ingredients with a spatula. Remove some of the contents to process a smaller quantity or add some liquid.

Tip

- How to remove the ingredients that stick to the side of the blender jar? 1. Switch off the appliance, and then unplug it. 2. Open the lid, and then use a spatula to remove the ingredients from the side of the jar. 3. Keep the spatula at least 2 cm from the blade.

7 Metal jar

Before you start, make sure you assemble according to Fig. 7.

The metal jar is intended for mixing flavor ingredients.

Fit the blade (for the metal jar or blender jar)

- 1 Hold the coupler on the underside of the jar and with the spanner.
- 2 Tighten the blade by rotating in anti-clockwise direction till it is securely locked.



Note

- Never open the lid to put your hand or any object in the jar while the blender is running.
- Always assemble the sealing ring onto the blade unit before you attach the blade unit to the blender jar.
- If you want to prepare a large quantity, process small batches of ingredients instead of a large quantity at once.

Recipe - Urad dal		
Ingredient	Speed	Processing time
• 175 g Urad dal + 400 ml Water (Soaking 6-8 hours)	SPEED 2	90 seconds
• Add 80 ml water during grinding		

8 Cleaning and storage

Caution

- Before you clean the appliance, unplug it.
- Make sure that the cutting edges of the blades, discs, and the inserts do not come into contact with hard objects. This may cause the blade to get blunt.
- The cutting edges are sharp. Be careful when you clean.

- 1 Clean the motor unit with a moist cloth.
- 2 Clean the other parts in hot water (< 60°C) with some washing-up liquid or in a dishwasher.
- 3 Store the product in a dry place.

Quick cleaning

You can follow the following steps to clean the food processor bowl and blender jar easier.

Note

- Make sure that the blade is assembled in the bowl if you clean the food processor bowl.

- 1 Pour lukewarm water (not more than 0.5 liters) and some washing-up liquid into the food processor bowl or blender jar.
- 2 Place the lid on the food processor bowl or blender jar, and then turn it clockwise to fix it.
- 3 Turn the speed selector to **P** until the bowl or jar is clean.
- 4 Let the appliance run for 30 seconds or until the food processor bowl or blender jar is clean.
- 5 Detach the blender jar or food processor bowl and rinse it with clean water.

9 Guarantee and service

If you have a problem, need service, or need information, see www.philips.co.in/support or contact the Philips Consumer Care Center in your country. The phone number is in the worldwide guarantee leaflet. If there is no Consumer Care Center in your country, go to your local Philips dealer.

Warranty and service

For any information or problem, contact your local Philips dealer or authorized service center. For a list of authorized Philips service centers visit: www.philips.co.in or contact our consumer care at 1800 102 2929 (Toll free) or 1860 180 1111 (standard call rates apply)

Warranty card

This apparatus is covered under warranty against any defect due to defective material or workmanship for TWO YEARS from the date of purchase. Should a defect develop during the period of warranty, PHILIPS DOMESTIC APPLIANCES INDIA LTD. undertakes to repair the apparatus FREE OF CHARGE through the dealer from whom it has been purchased or at any of the Philips authorized Service Centres.

The warranty is not valid in case:

1. Apparatus is not used according to user manual.
2. Defects caused by improper or reckless use.
3. Repairs done by persons other than Philips Authorized service centre.
4. Modifications of any nature made in the apparatus.
5. Tampered serial number.
6. Incomplete warranty card after purchase.
7. Product if used for commercial purpose (i.e. other than domestic use).
8. Usage of parts not recommended by Philips or those made by other manufacturers.

All consumables and parts susceptible to normal wear and tear are not covered under warranty.

Week/S.No.

Date of purchase _____

Dealer's name: _____

Dealer's stamp: _____

Customer's name and address: _____

Model No.: _____

Dealer's signature: _____

Always there to help
 Register your product for further support at www.philips.co.in
 Or Call 1800 102 2929 (Toll Free)
 1860 180 1111 *Standard call rates apply*