

Always there to help you

Register your product and get support at  
www.philips.com/welcome



HD3133  
Мультиварка  
Мультипісиріш



EN User manual

RU Руководство пользователя

UK Посібник користувача

**PHILIPS**



Specifications are subject to change without notice  
© 2014 Koninklijke Philips N.V.  
All rights reserved.

HD3133\_UM\_RU\_V2.0\_141105



## English

### 1 Your multi-cooker

Congratulations on your purchase, and welcome to Philips!  
To fully benefit from the support that Philips offers, register your product at [www.Philips.com/welcome](http://www.Philips.com/welcome).

### 2 What's in the box (fig.1)

Multicooker main unit      Steamer  
Rice scoop      Soup ladle  
Measuring cup      Gloves  
User manual      Safety leaflet  
Warranty card      Recipe

### 3 Overview (fig.2)

① Top lid	⑥ Power socket
② Inner pot	⑦ Heating element
③ Lid release button	⑧ Water level indications
④ Control panel	⑨ Cooker handle
⑤ Main body	⑩ Detachable steam vent cap

### Controls overview (fig.3)

Ⓜ Preset button	Ⓝ Boil/Steam button
Ⓜ Keep-warm button	Ⓝ Bake button
Ⓜ Rice button	Ⓝ Off button
Ⓜ Soup/Congee/Stew button	Ⓝ Display
Ⓜ Fry button	

### Functions overview

Functions	Default cooking time	Adjustable cooking time	Preset time
Rice (Рис)	35 Minutes	/	1 - 24 Hours
Congee/Soup/Stew (Каша/Суп/Тушить)	10 Minutes	5 minutes to 10 hours	1 - 24 Hours
Fry (Жарить)	15 Minutes	5 - 60 minutes	/
Boil/Steam (Варить/Пароварка)	30 Minutes	5 - 120 minutes	1 - 24 Hours
Bake (Печь)	45 Minutes	20 - 120 minutes	1 - 24 hours

## 4 Using the multi-cooker

### Before first use

- Take out all the accessories from the inner pot. Remove the packaging material of the inner pot.
- Clean the parts of the multi-cooker thoroughly before using it for the first time (see chapter "Cleaning and Maintenance").

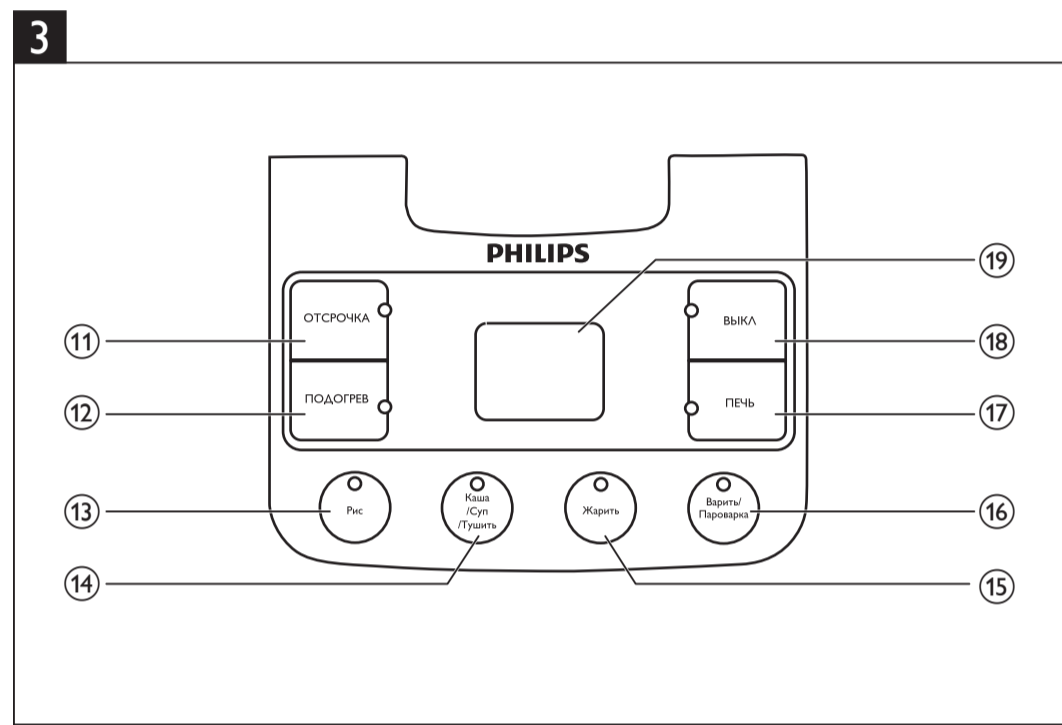
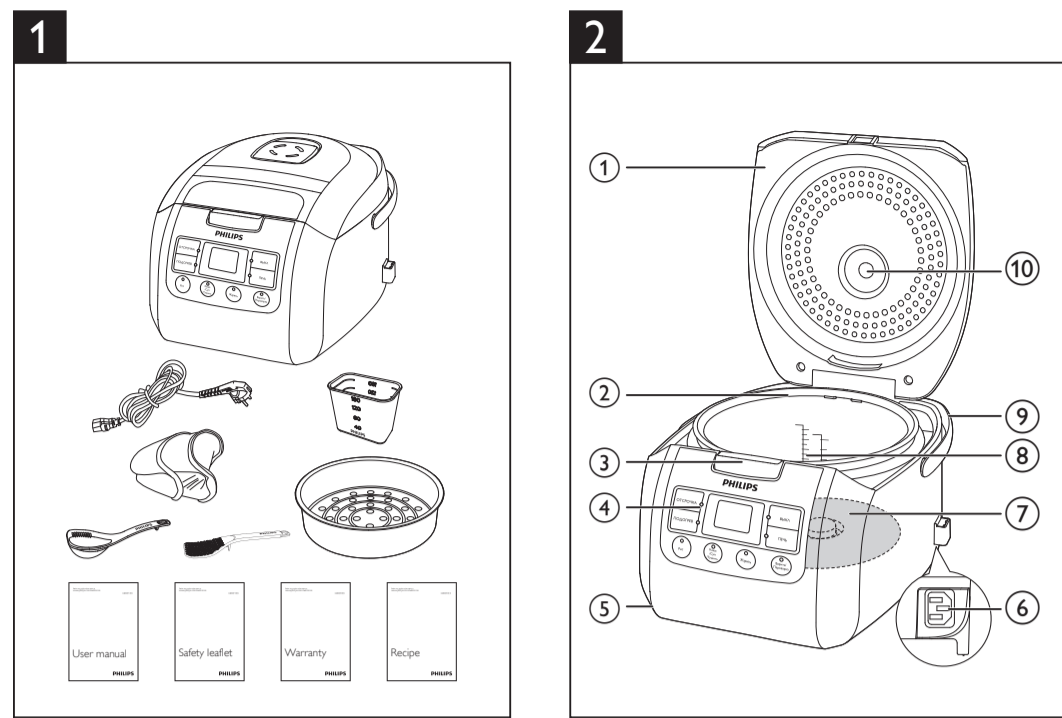
### Note

- Make sure all parts are completely dry before you start using the multi-cooker.

### Preparations before cooking (fig.4)

Before using the multi-cooker, you need to follow below preparations:

- Measure the rice using the measuring cup provided.
- Wash the rice thoroughly.
- Put the pre-washed rice in the inner pot.



- Add water to the level indicated on the scale inside the inner pot that corresponds to the number of cups of rice used. Then smooth the rice surface.
- Press the release lever to open the lid.
- Wipe the outside of the inner pot dry, then put the inner pot in the multi-cooker. Check if the inner pot is in proper contact with the heating element.
- Close the lid of the multi-cooker, and put the plug in the power socket.

### Note

- Each cup of uncooked rice normally gives 2 bowls of cooked rice. 1 cup of rice is approximately 180ml.
- The level marked inside the inner pot is just an indication. You can always adjust the water level for different types of rice and your own preference.
- Make sure that the outside of the inner pot is clean and dry, and that there is no foreign residue on the heating element or the magnetic switch.

### Rice cooking (fig.5)

- Follow the steps in "Preparations before cooking".
- Press the rice cooking button (Рис). The default cooking time starts flashing on the display.
- Wait for a few seconds before the multi-cooker automatically enters rice cooking mode.
- When the cooking is finished, you will hear a few beeps and the selected cooking function light will be off.
- The multi-cooker will be in keep-warm mode automatically. The keep-warm (ПОДОГРЕВ) indicator lights up.

### Note

- After the cooking has started, you can press the off button (ВЫКЛ) to deactivate the cooking process, and the multi-cooker will be in standby mode.
- The default cooking time is 35 minutes, and is not adjustable.

### Cooking congee, making soup and stewing (fig.6)

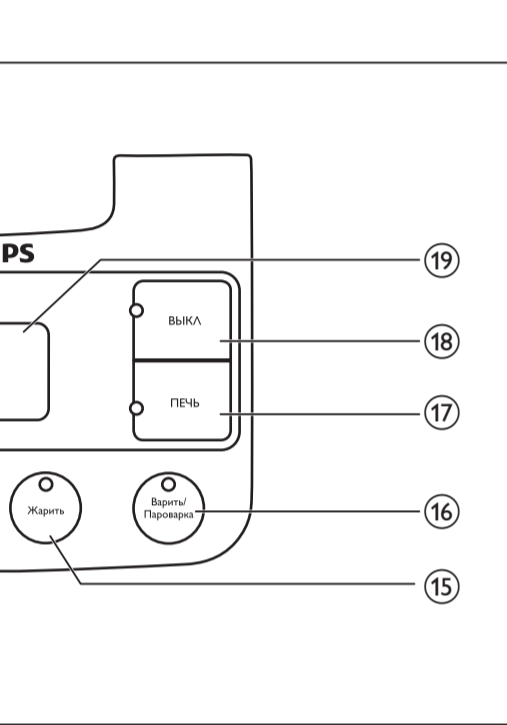
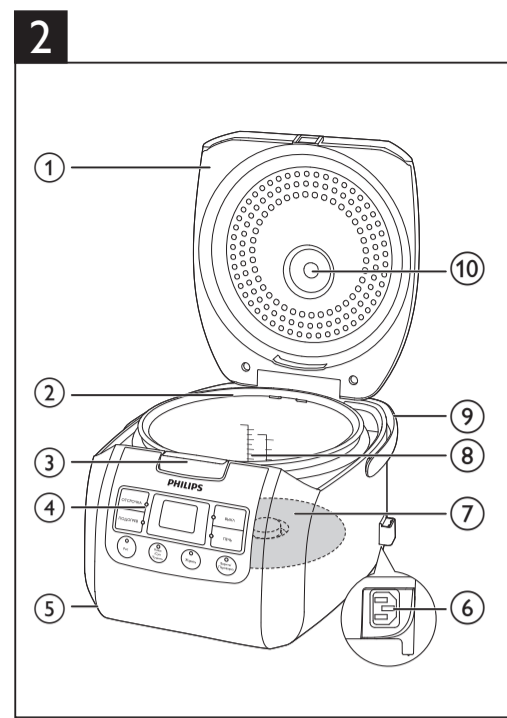
- Follow the steps in "Preparations before cooking".
- Press the congee/soup/stew button (Каша/Суп/Тушить). The default cooking time starts flashing on the display.
- To select a different cooking time, press the congee/soup/stew button (Каша/Суп/Тушить) repeatedly to do so.
- After the cooking time is selected, the multi-cooker automatically enters the selected cooking mode in a few seconds.
- When the cooking is finished, you will hear a few beeps and the selected function light will be off.
- The multi-cooker will be in keep-warm mode automatically. The keep-warm (ПОДОГРЕВ) indicator lights up.

### Note

- Do not exceed the volume indicated nor exceed the maximum water level indicated in the inner pot, as this may cause the multi-cooker to overflow.
- It is normal to find the congee stickier if it is left in keep-warm mode for too long.
- If the voltage is unstable at the area you live, it is possible that the multi-cooker overflows.
- After the cooking has started, you can press the off button (ВЫКЛ) to deactivate the cooking process, and the multi-cooker will be in standby mode.
- In congee, soup, and stew modes, the cooking time only starts counting down when the water starts boiling.
- The default cooking time is 10 minutes. You can select the cooking time between 5 minutes to 10 hours.

### Frying (fig.7)

- Put food and ingredients into the inner pot.
- Follow step 6 in "Preparations before cooking".
- Put the plug in the power socket.
- Press the frying button (Жарить). The default cooking time starts flashing on the display.
- To set a different cooking time, press the frying button (Жарить) repeatedly to do so.



- After the cooking time is selected, the multi-cooker automatically enters the selected cooking mode in a few seconds.
- During cooking, stir the food constantly using a spatula.
- When the cooking is finished, you will hear a few beeps and the selected cooking function light will be off.
- The multi-cooker will be in keep-warm mode automatically. The keep-warm (ПОДОГРЕВ) indicator lights up.

### Note

- Do not close the top lid when cooking in the fry mode.
- After the cooking has started, you can press the off button (ВЫКЛ) to deactivate the cooking process, and the multi-cooker will be in standby mode.
- The default cooking time is 15 minutes. You can select the cooking time between 5 to 60 minutes.

### Steaming (fig.8)

- Measure a few cups of water with the measuring cup.
- Pour the water into the inner pot.
- Put the steam basket into the inner pot.
- Put the food into the steamer.
- Follow step 7 in "Preparations before cooking".
- Press the steaming button (Варить/Пароварка). The default cooking time starts flashing on the display.
- To set a different cooking time, press the steaming button (Варить/Пароварка) repeatedly to do so.
- After the cooking time is selected, the multi-cooker automatically enters the selected cooking mode in a few seconds.
- When the cooking is finished, you will hear a few beeps and the selected cooking function light will be off.
- The multi-cooker will be in keep-warm mode automatically. The keep-warm (ПОДОГРЕВ) indicator lights up.
- Open the lid and carefully take out the steamed food from the plate or steamer.

### Note

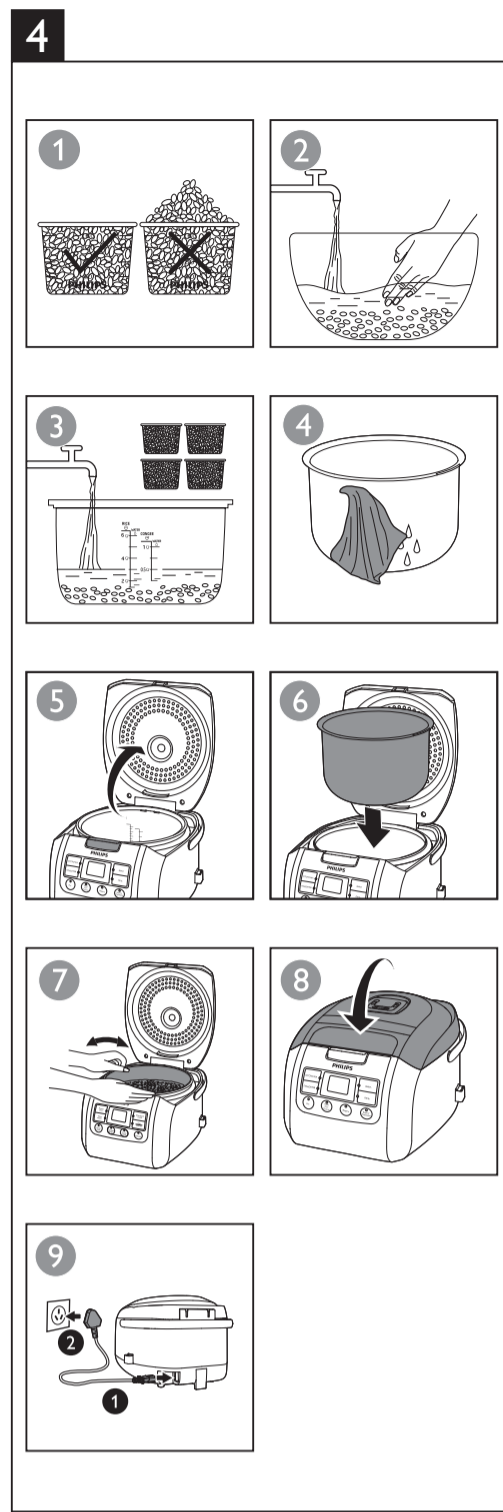
- When removing the food from the steamer, use a kitchen glove or a cloth, as the plate and steamer will be very hot.
- Do not exceed the volume indicated nor exceed the maximum water level indicated in the inner pot, as this may cause the multi-cooker to overflow.
- You can adjust the water level as needed.
- After the cooking has started, you can press the off button (ВЫКЛ) to deactivate the cooking process, and the multi-cooker will be in standby mode.
- In steaming mode, the cooking time only starts counting down when the water starts boiling.
- The default cooking time is 30 minutes. You can select the cooking time from 5 minutes to 2 hours.

### Boiling (fig.9)

- Pour some water into the inner pot.
- Follow step 7 in "Preparations before cooking".
- Press the boiling button (Варить/Пароварка). The default cooking time starts flashing on the display.
- To set a different cooking time, press the boiling button (Варить/Пароварка) repeatedly to do so.
- After the cooking time is selected, the multi-cooker automatically enters the selected cooking mode in a few seconds.
- When the cooking is finished, you will hear a few beeps and the selected cooking function light will be off.
- The multi-cooker will be in keep-warm mode automatically. The keep-warm (ПОДОГРЕВ) indicator lights up.

### Note

- Do not exceed the volume indicated nor exceed the maximum water level indicated in the inner pot, as this may cause the multi-cooker to overflow.
- After the cooking has started, you can press the off button (ВЫКЛ) to deactivate the cooking process, and the multi-cooker will be in standby mode.
- In boiling mode, the cooking time only starts counting down when the water starts boiling.
- The default cooking time is 30 minutes. You can select the cooking time from 5 minutes to 2 hours.



### Baking (fig.10)

- Put the food and ingredients in the inner pot.
- Follow step 6 in "Preparations before cooking".
- Put the plug in the power socket.

### Note

- When baking cake, keep the lid closed during cooking.
- When baking food other than cake, the lid must be opened during cooking.

- Press the baking button (Печь). The default cooking time starts flashing on the display.
- To set a different cooking time, press the baking button (Печь) repeatedly to do so.
- After the cooking time is selected, the multi-cooker automatically enters the selected cooking mode in a few seconds.
- When the baking is finished, you will hear a few beeps and the selected function light will be off.
- The multi-cooker will be in keep-warm mode automatically. The keep-warm (ПОДОГРЕВ) indicator lights up.

### Note

- When removing the inner pot from the multi-cooker, use a kitchen glove or a cloth, as the inner pot will be very hot.
- After the cooking has started, you can press the off button (ВЫКЛ) to deactivate the cooking process, and the multi-cooker will be in standby mode.
- The default cooking time is 45 minutes. You can select the cooking time from 20 minutes to 2 hours.

### Keep-warm mode

The multi-cooker provides you with easy control over the keep-warm mode. After you have selected the cooking function, the keep-warm indicator starts flashing. If you press the keep-warm button (ПОДОГРЕВ), the keep-warm indicator will be off. After the cooking is finished, the multi-cooker will switch to standby mode directly. To reactivate the keep-warm function, press the keep-warm button (ПОДОГРЕВ) again, and the keep-warm indicator starts flashing. The multi-cooker will switch to keep-warm mode automatically after the cooking is finished.

### Note

- In standby mode, you can press the keep-warm button (ПОДОГРЕВ) to enter keep-warm mode.
- In keep-warm mode, you can press the keep-warm button (ПОДОГРЕВ) to enter standby mode.

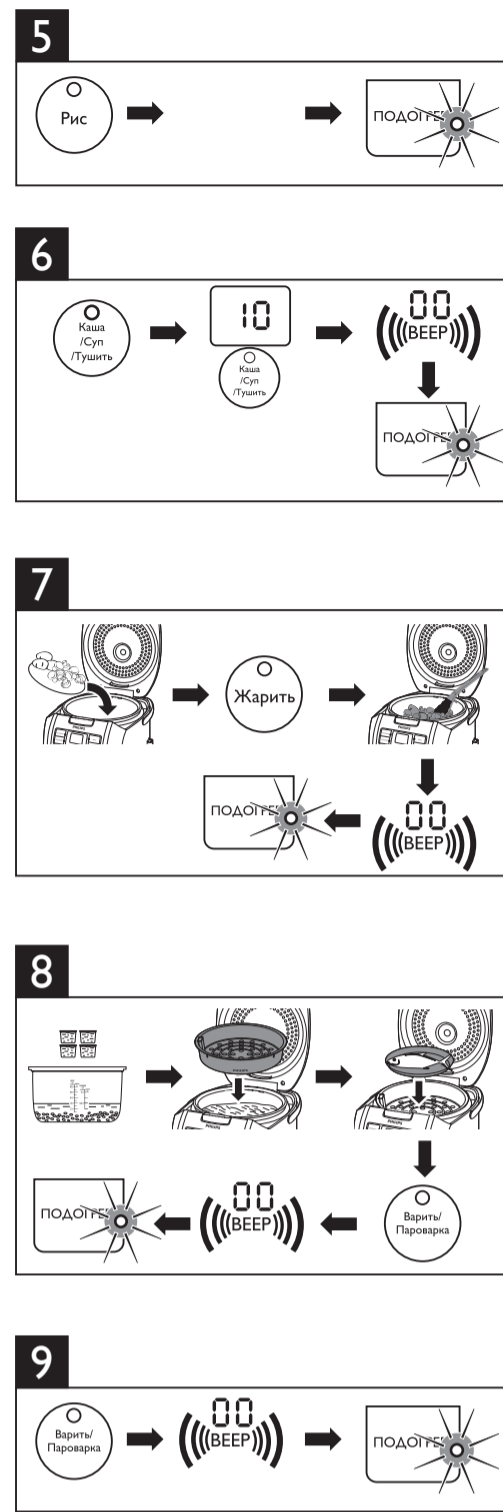
### Preset time for delayed cooking (fig.11)

You can preset the delayed cooking time for different cooking modes.

- Follow steps 6 and 7 in "Preparations before cooking".
- Press the desired cooking button.
- Press the preset button (ОТСРОЧКА).
- The default preset time starts flashing on the display.
- To set a different preset time, press the preset button (ОТСРОЧКА) repeatedly to select the desired preset time.
- After the preset time is selected, wait for a few seconds before the multi-cooker automatically confirms the preset time.
- The cooking will be finished when the preset time has elapsed. You will hear a few beeps and the selected cooking function light will be off.
- The multi-cooker will be in keep-warm mode automatically. The keep-warm (ПОДОГРЕВ) indicator lights up.

### Note

- The preset function is not available in fry mode (Жарить).
- The preset button is not responsive in standby mode.
- The default preset time is 1 hour. You can select the preset time between 1 to 24 hours.



## 5 Cleaning and Maintenance

### Note

- Unplug the multi-cooker before starting to clean it.
- Wait until the multi-cooker has cooled down sufficiently before cleaning it.

### Interior

- Wipe with a cloth and the main body.
- Wipe with wrung out and damp cloth.
- Make sure to remove all the food residues stuck to the multi-cooker. Heating element:
- Wipe with wrung out and damp cloth.
- Remove food residues with wrung out and damp cloth.

### Exterior

- Wipe with a cloth dampened with soap water.
- Only use soft and dry cloth to wipe the control panel.
- Make sure to remove all the food residues around the control panel.

### Accessories

- Rice scoop, soup ladle, inner pot, steamer, and steam vent cap:
- Soak in hot water and clean with sponge.

### 6 Environment

Do not throw away the appliance with normal household waste at the end of its life, but hand it in at an official collection point for recycling. By doing this, you can help to preserve the environment.

### 7 Guarantee and service

If you need service or information, or if you have a problem, visit the Philips website at [www.philips.com](http://www.philips.com) or contact the Philips Customer Care Center in your country. You can find its phone number in the worldwide guarantee leaflet. If there is no Customer Care Center in your country, go to your local Philips dealer.

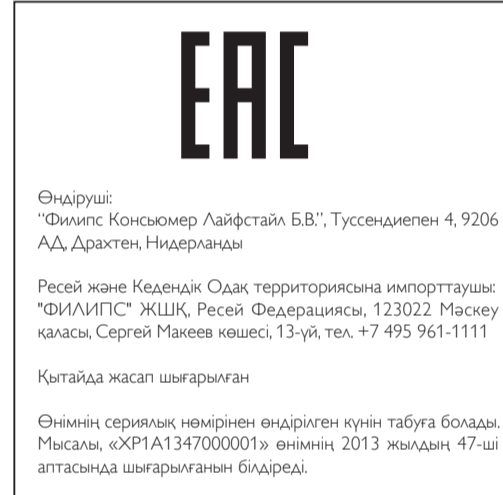
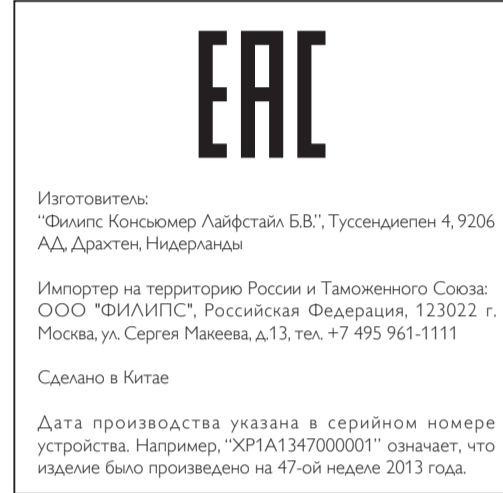
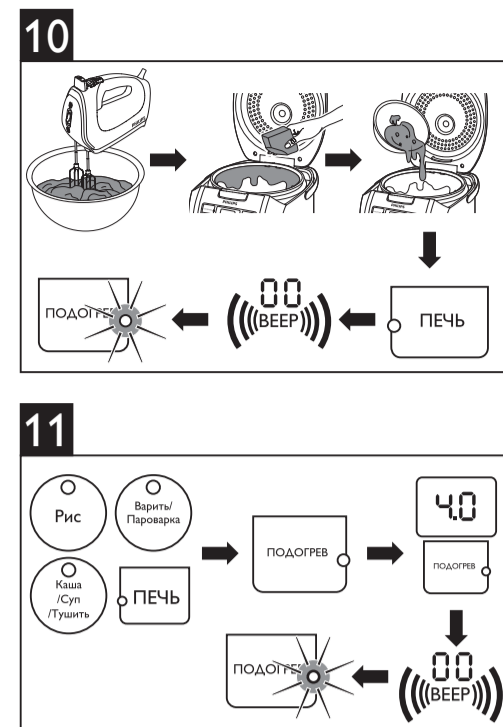
### 8 Specifications

Model Number	HD3133
Rated power output	980W
Rated capacity	5.0L

### 10 Troubleshooting

If you encounter problems when using this multi-cooker, check the following points before requesting service. If you cannot solve the problem, contact the Philips Consumer Care Center in your country.

Problem	Solution
The light on the button does not go on.	There is a connection problem. Check if the power cord is connected to the multi-cooker properly and if the plug is inserted firmly into the power outlet. The light is defective. Take the appliance to your Philips dealer or a service center authorized by Philips.
The display does not function.	The multi-cooker is not connected to the power supply. If there is no power supply, the power failure backup function does not work and the display does not function. The battery for the display runs out of power. Take the appliance to your Philips dealer or a service center authorized by Philips to have the battery replaced.



Problem	Solution
The rice is not cooked.	There is not enough water. Add water according to the scale on the inside of the inner pot. Make sure that there is no foreign residue on the heating element and the outside of the inner pot before switching the multi-cooker on. The heating element is damaged, or the inner pot is deformed. Take the multi-cooker to your Philips dealer or a service center authorized by Philips.
The rice is too dry and not well cooked.	Add more water to the rice, and cook for a bit longer.
The multi-cooker does not switch to the keep-warm mode automatically.	The temperature control is defective. Take the appliance to your Philips dealer or a service center authorized by Philips.
The rice is scorched.	You have not rinsed the rice properly. Rinse the rice until the water runs clear.
Water spills out of the multi-cooker during cooking.	Make sure that you add water to the level indicated on the scale inside the inner pot that corresponds to the number of cups of rice used.
Rice smells bad after cooking.	Clean the inner pot with some washing detergent and warm water. After cooking, make sure the steam vent cap, inner lid and inner pot is cleaned thoroughly.
Error message (E1, E2, E3, or E4) appears on the display.	There has been a power failure during cooking. Take the appliance to your Philips dealer or a service center authorized by Philips.

## Русский

### 1 Мультиварка

Поздравляем с покупкой и добро пожаловать в клуб Philips! Чтобы воспользоваться всеми преимуществами поддержки Philips, зарегистрируйте приобретенное устройство на сайте [www.philips.com/welcome](http://www.philips.com/welcome).

### 2 Комплектация (рис. 1)

Мультиварка  
Ложка для риса  
Мерный стакан  
Руководство пользователя  
Инструкции по безопасности

Пароварка  
Половник для супа  
Кухонные рукавицы  
Гарантийная карточка  
Ресурсы

### 3 Обзор (рис. 2)

① Верхняя крышка	④ Разъем питания
② Внутренняя емкость	⑦ Нагревательный элемент
③ Кнопка открывания крышки	⑧ Индикация уровня воды
④ Панель управления	⑨ Ручка мультиварки
⑤ Основной корпус	⑩ Съемная крышка отверстия выхода пара

