

PHILIPS

FC6827, FC6823,
FC6822, FC6814,
FC6813, FC6812



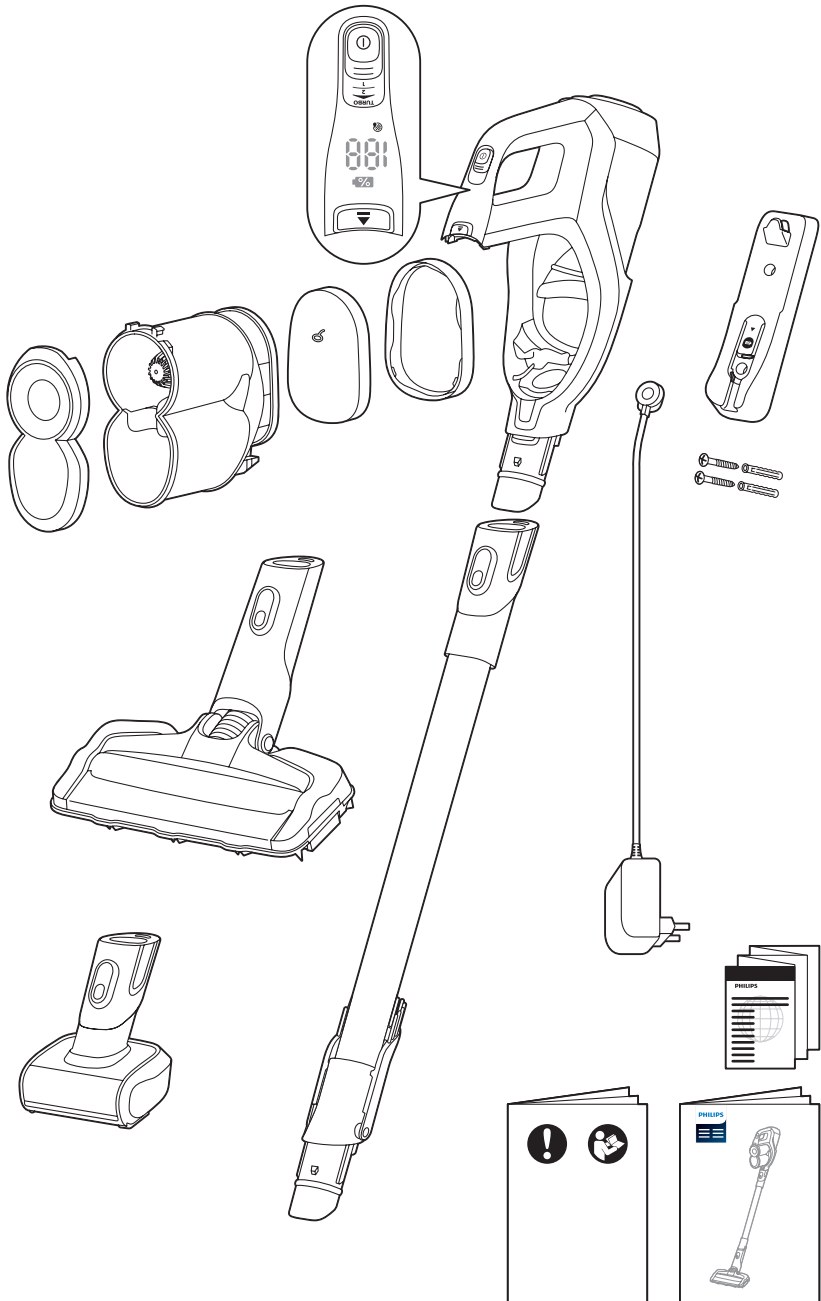
	注意事项	2		手持真空吸尘器	7
	包装盒有什么?	3		使用迷你涡轮刷	7
	安装	4		使用软刷	8
	充电	4		排空贮尘容器	8
	提示	4		 清洁集尘桶	9
	组装	5		 清洁过滤网	10
	使用LED灯	5		 清洁滚刷	11
	使用地板喷嘴	5		 清洁迷你涡轮刷	11
	使用	6		警告	12

注意事项



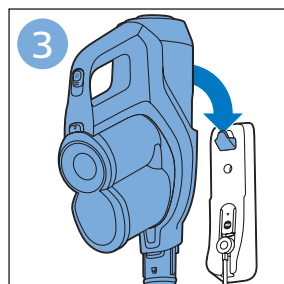
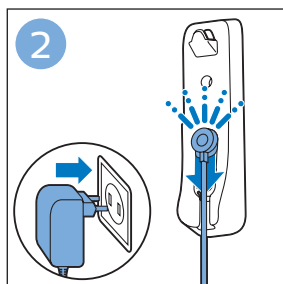
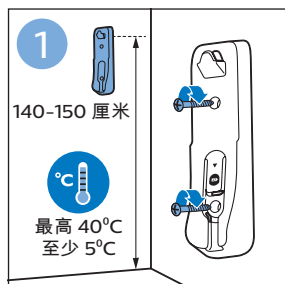


包装盒内有什么？

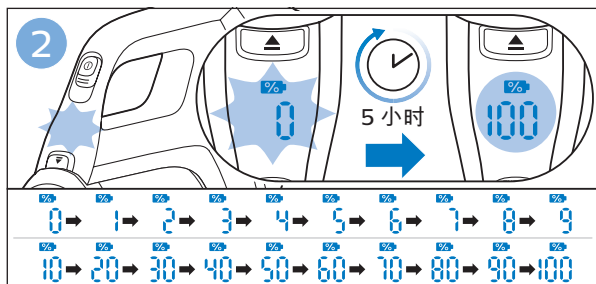
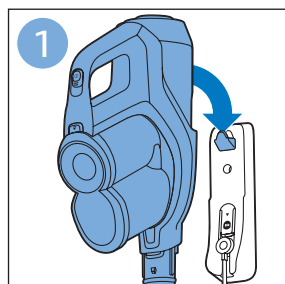




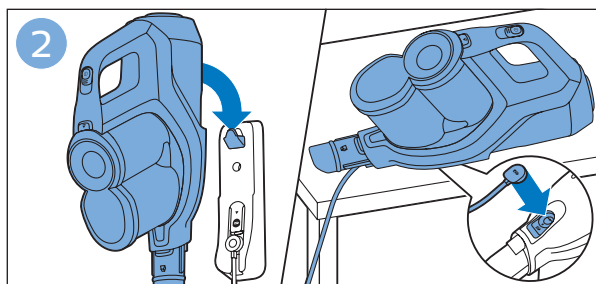
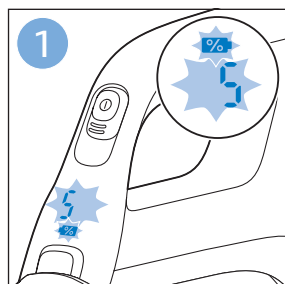
安装



充电

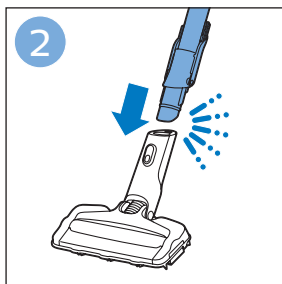
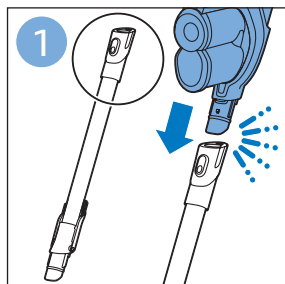


提示

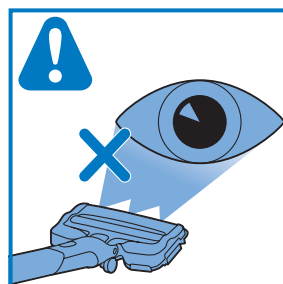
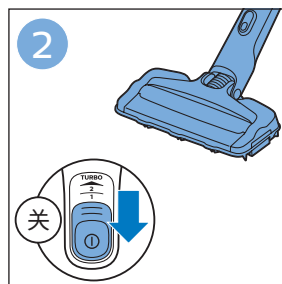
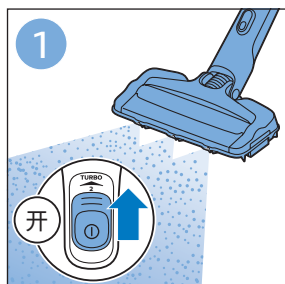




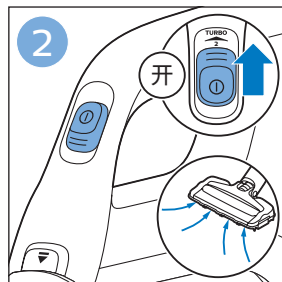
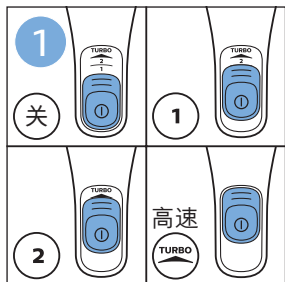
组装

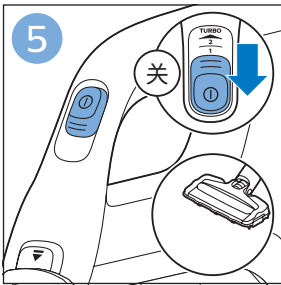


使用LED灯

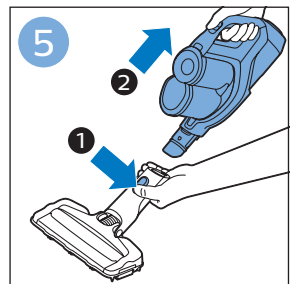
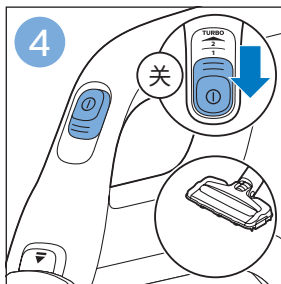
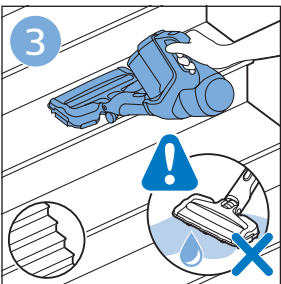
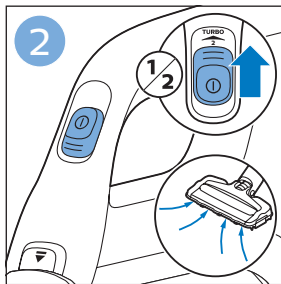
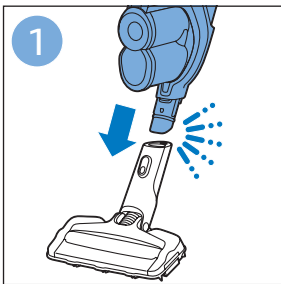


使用地板喷嘴



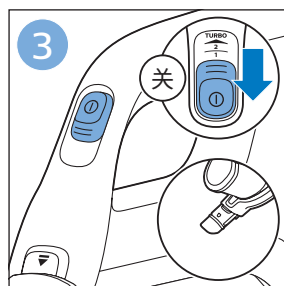
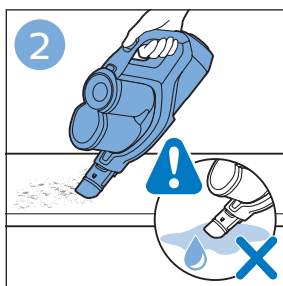
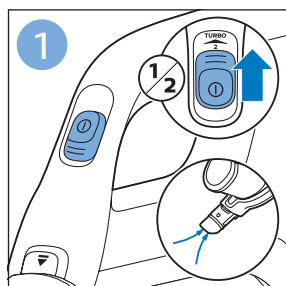


使用

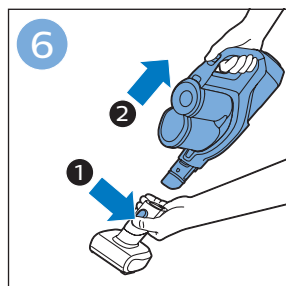
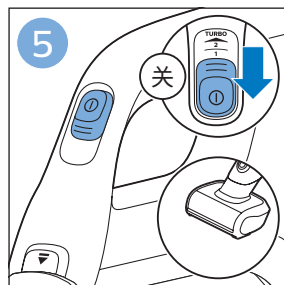
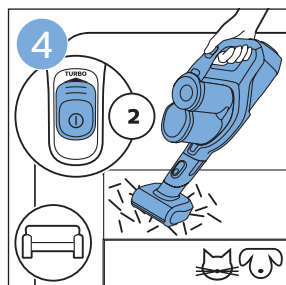
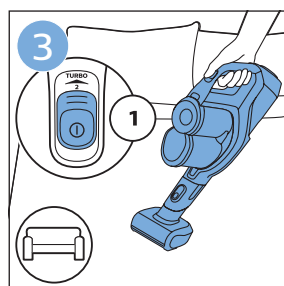
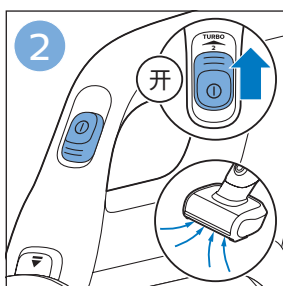
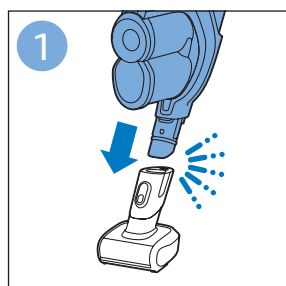




手持真空吸尘器

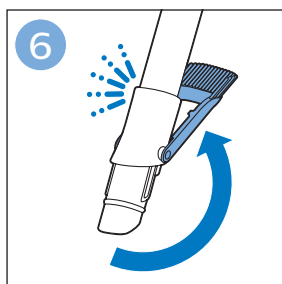
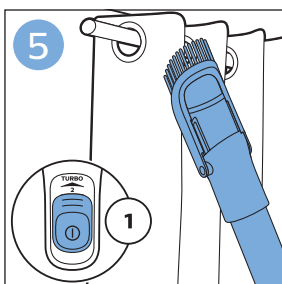
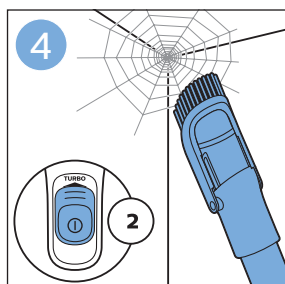
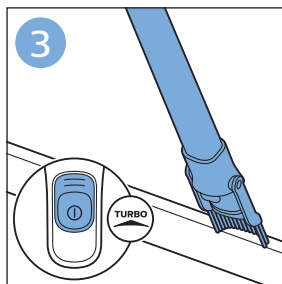
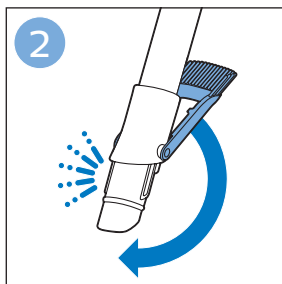
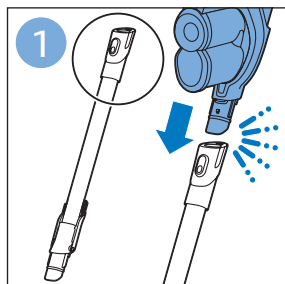


使用迷你涡轮刷

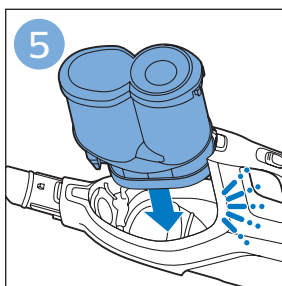
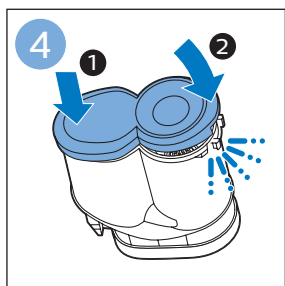
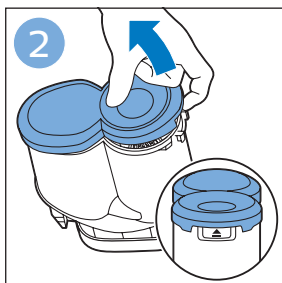
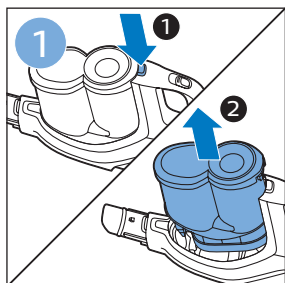




使用软刷

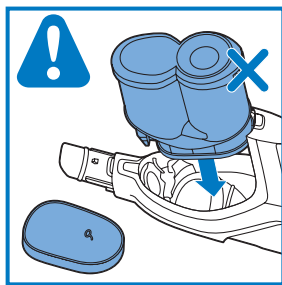
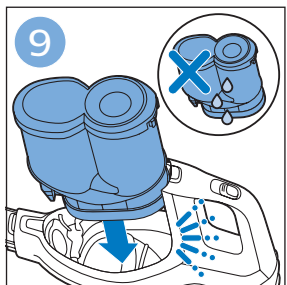
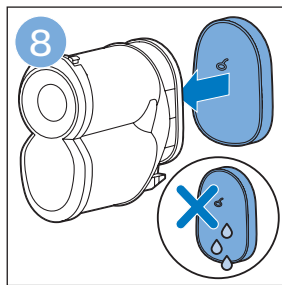
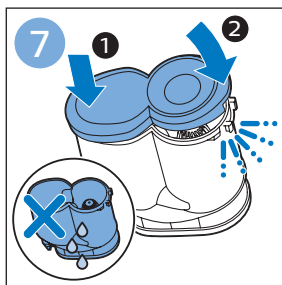
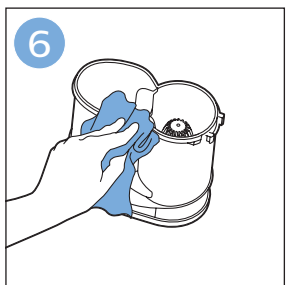
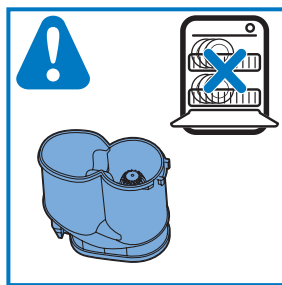
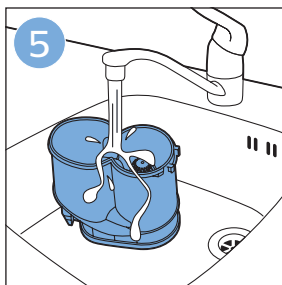
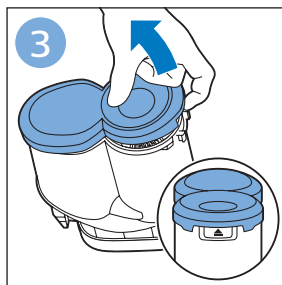
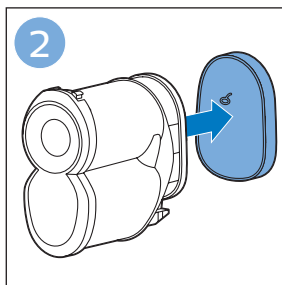
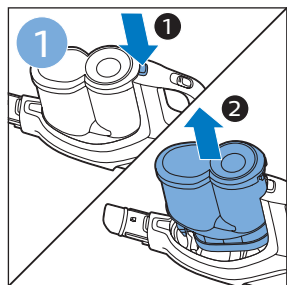


排空贮尘容器



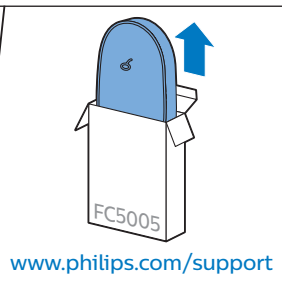
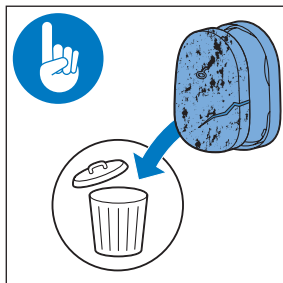
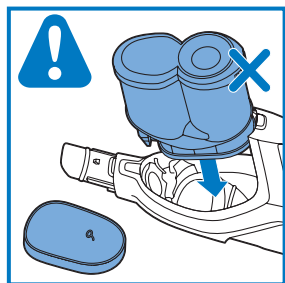
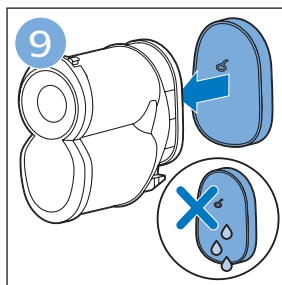
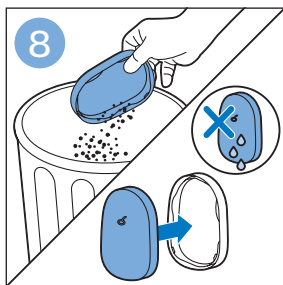
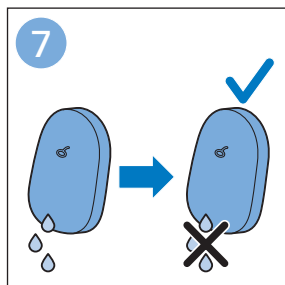
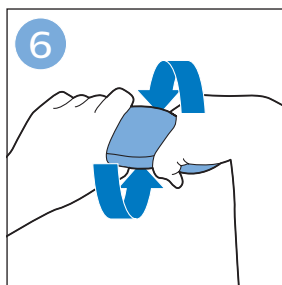
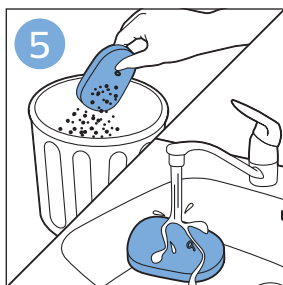
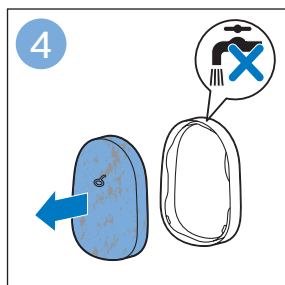
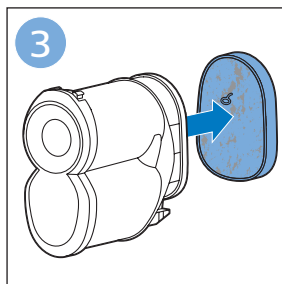
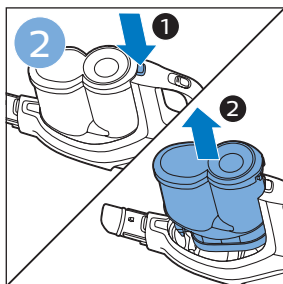
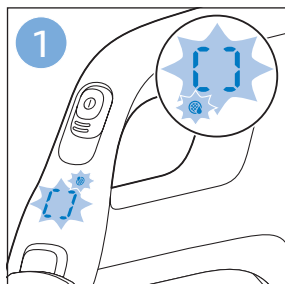


清潔集塵桶



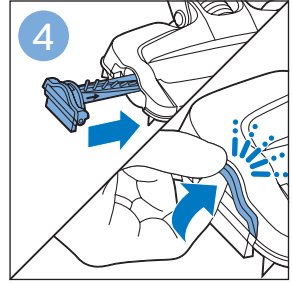
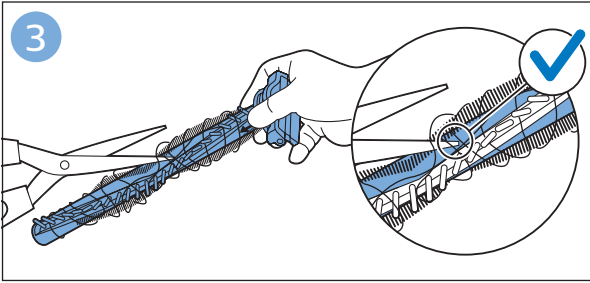
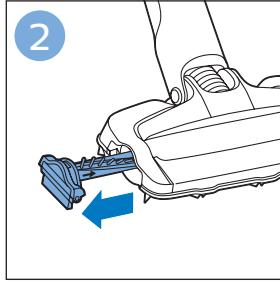
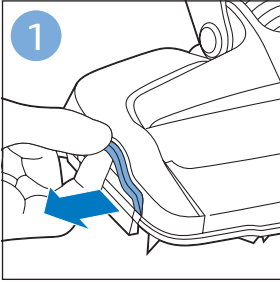


清洁过滤网

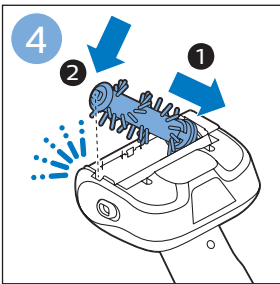
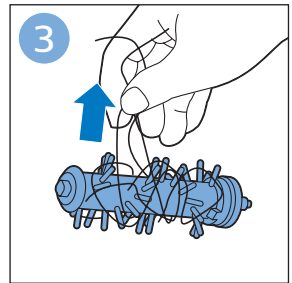
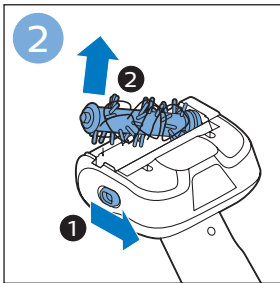
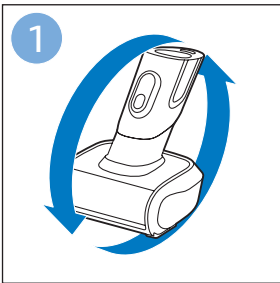




清洁滚刷

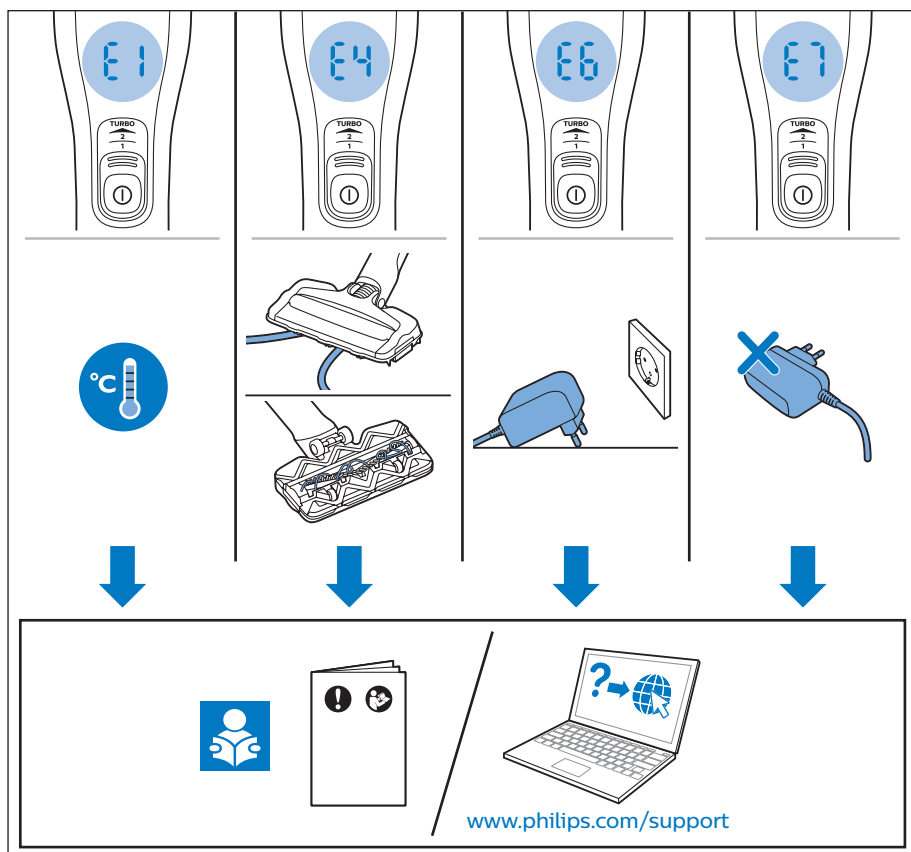
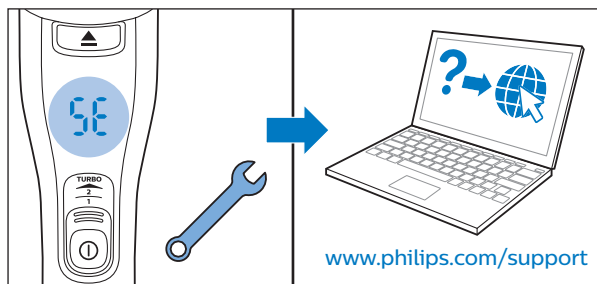


清洁 迷你涡轮刷





警告



www.philips.com

100% recycled paper
100% 循环再造纸

4222.003.4310.5