

始终如一地为您提供帮助

在以下网站上注册产品并获得支持
www.philips.com/welcome



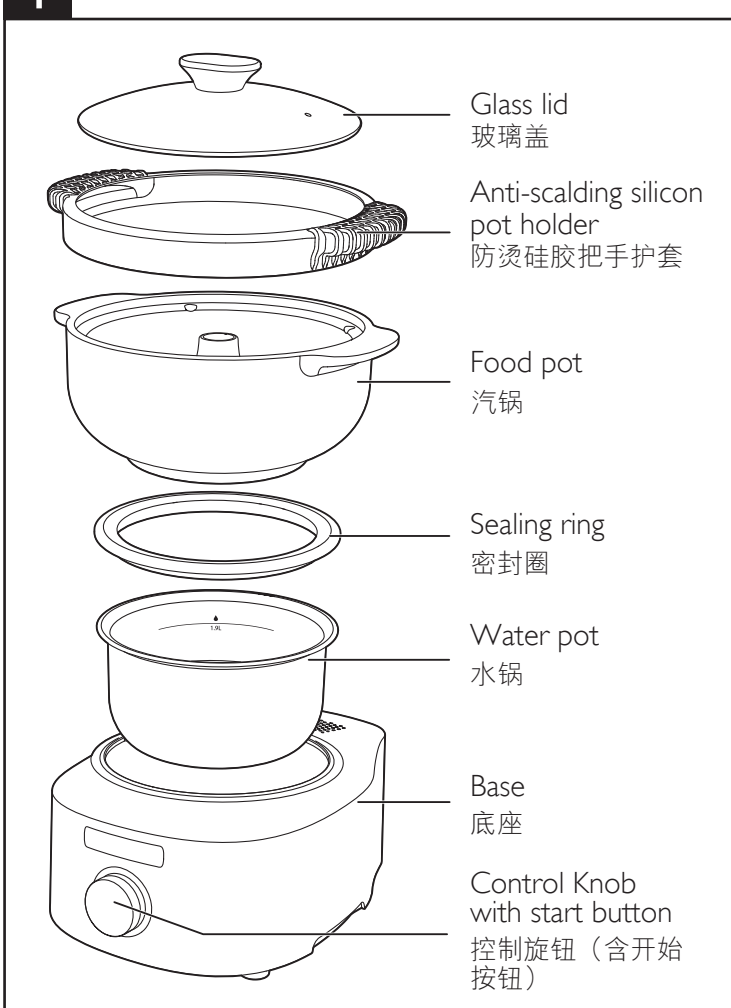
HR2210
HR2211
HR2212

EN User manual ZH-CN 使用手册

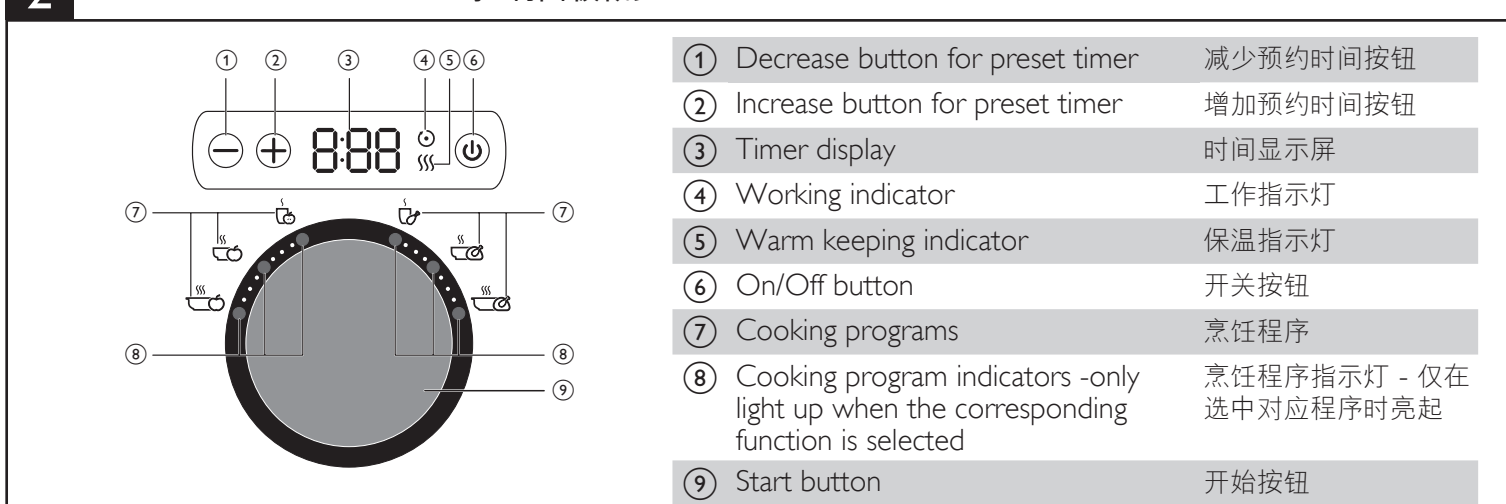
使用产品前请仔细阅读本使用说明书
保留备用



1 Product Overview 产品概览



2 Controls Overview 控制面板概览



Type of soup 汤的类别	Cooking programs 烹饪程序	Cooking time 烹饪时间	Result 汤品说明
Salty soup 咸汤	Fast cooking 快速煲	2 hours 2 小时	Sufficient for 2-3 persons 适合 2-3 人的汤量
	Standard cooking 标准煲	4 hours 4 小时	Sufficient for 3-4 persons 适合 3-4 人的汤量
	Slow cooking 老火慢煲	6 hours 6 小时	Sufficient for 4-5 persons with more tender meat 适合 4-5 人的汤量, 及更细嫩的肉质
Sweet soup 甜汤	Fast cooking 快速煲	2 hours 2 小时	Sufficient for 2-3 persons 适合 2-3 人的汤量
	Standard cooking 标准煲	3 hours 3 小时	Sufficient for 3-4 persons 适合 3-4 人的汤量
	Slow cooking 老火慢煲	4 hours 4 小时	Sufficient for 4-5 persons with more tender taste 适合 4-5 人的汤量, 及更细嫩的汤料口感

3 Preparations before cooking 烹饪前的准备



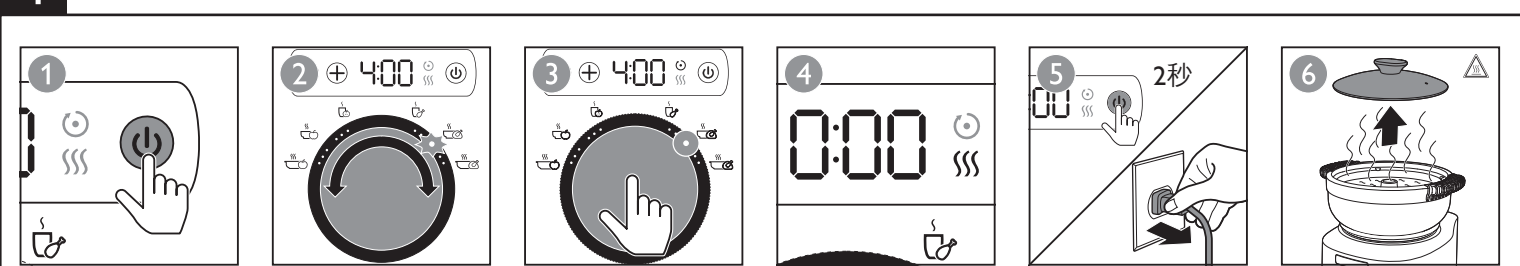
Note:

- Add water to the water level indication on the inside of the water pot.
- Do not use this appliance on an unstable or uneven surface.
- Blanch the meat before putting it in the food pot.
- To avoid scalding, assemble the anti-scalding silicon pot holder. (Note: Assemble the pot holder on the handles first, and then round the silicone ring on the edge of the food pot.)

注意:

- 向水锅加水时, 请将水加至水锅内侧标示的水位线处。
- 禁止在不稳或倾斜的台面使用本产品。
- 肉类食材建议焯过水后再放入汽锅。
- 为了避免烫伤, 请安装防烫硅胶把手护套。(注意: 安装时先将两侧汽锅把手套住, 再将硅胶带移动到汽锅口边缘并固定住。)

4 Using the appliance 使用本产品



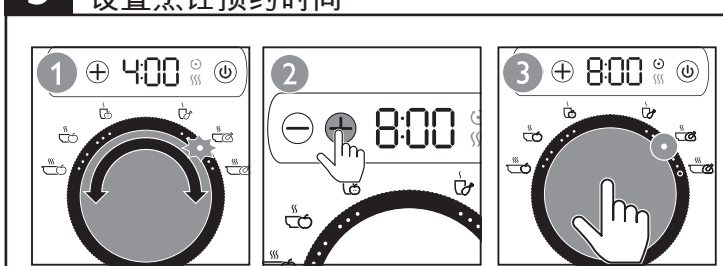
Note:

- After the cooking program is selected, press the start button (refer to fig. 3).
- Put all the ingredients in the food pot before cooking. Try not to add ingredients during cooking.
- If you need to open the lid during cooking or shortly after the cooking process is finished, take extra caution of the steam to avoid getting burnt.
- The cooking process will be finished when 0:00 displays on the screen.
- After the cooking is finished, the appliance will stay at warm keeping mode for 1 hour.

注意:

- 选好程序后请按下开始按钮启动程序 (如图 3 所示)。
- 请在烹饪之前一次性将食材放入汽锅。尽量避免在烹饪过程中开盖添加食材。
- 如果需要在烹饪过程中, 或烹饪刚结束时开盖, 请注意蒸汽, 避免烫伤。
- 在屏幕时间显示 0:00 时, 表示烹饪过程完成。
- 烹饪结束后, 汽锅将自动保温一小时。

5 Preset time for delayed cooking 设置烹饪预约时间



Note:

- After the program you need is selected, press "+" or "-" to set the preset time. For example, if the current time is 10:00 in the morning and you want your soup ready at 18:00 in the evening (8 hours later), you can set the preset time to 8:00. The cooking program will start at a later time, and finishes at 18:00.

注意:

- 选好程序后可以按 "+" "-" 键设置预约功能。例如, 如果现在时间为早上 10 点, 您希望晚上 6 点做好汤 (8 小时之后), 您可以将预约时间设置为 8:00。烹饪程序会延时开始, 并在晚上 6 点时结束。

6 Cleaning 清洁



Note:

- Before cleaning, make sure the appliance is switched off and unplugged.
- Make sure that the pots and sealing ring cool down to room temperature before cleaning.
- Only clean the pots with a soft cloth.
- Disassemble the sealing ring before cleaning the water pot. Wash the sealing ring and water pot separately.
- Clean the exterior of the base with a soft clean cloth.
- You can disassemble the anti-scalding silicon pot holder and clean it with tap water. (Note: Take the silicone ring off the edge of the food pot first, and then remove the pot holder from the handles.)

注意:

- 清洁产品前请确保产品已关闭, 且已拔除电源插头。
- 清洁汽锅、水锅以及密封圈之前请确保它们已冷却至室温。
- 水锅与汽锅仅可使用软布进行清洁。
- 水锅清洗前请拆下硅胶垫圈, 请分别清洗硅胶垫圈和水锅。
- 产品底座外部可以用干净的软布擦拭。
- 防烫硅胶把手护套可以拆卸并用水清洗。(注意: 拆卸时候请先拆卸硅胶带, 再拆除一侧把手套。)

PHILIPS

产品 : 飞利浦汽锅醇汤煲
型号 : HR2210, HR2211, HR2212
额定电压 : 220V~
额定频率 : 50Hz
额定输入功率 : 600 W
生产日期 : 请见产品本体
产地 : 中国上海

飞利浦(中国)投资有限公司
上海市天目西路218号1602-1605
全国顾客服务热线: 4008 800 008

本产品根据国标GB4706.1-2005,
GB4706.19-2008制造

出版日期: 2015-03-17



© 2015 Koninklijke Philips N.V.



4241 210 18931

1 Your Chi-pot soup maker

Congratulations on your purchase, and welcome to Philips! To fully benefit from the support that Philips offers, register your product at www.philips.com/welcome.

2 Important

Read this user manual carefully before you use the appliance, and save it for future reference.

Warning

- This appliance is intended for household use only.
- This appliance is not intended for use by persons (including children) with reduced physical, sensory, or mental capabilities, or lack of experience and knowledge, unless they have been given supervision or instruction concerning use of the appliance by a person responsible for their safety. Children should be supervised to make sure that they do not play with the appliance.
- Check if the voltage indicated on the appliance corresponds to the local power voltage before you connect it.
- Only connect the appliance to a grounded power outlet. Always make sure that the plug is inserted firmly into the power outlet.
- Make sure that the damaged power cord is replaced by Philips, a service center authorized by Philips or similarly qualified persons in order to avoid a hazard.
- Do not use this appliance on an unstable or uneven surface.
- Do not exceed the water level indication when filling the water pot with water. This is to avoid overflow
- Do not plug in or unplug the appliance with wet hands.
- Before plugging in the appliance, make sure the heating element, temperature sensor and exterior of the water pot are clean and dry. Residues on them could lead to malfunction of the appliance.
- Make sure to put the water pot in the base before you plug in and switch on the appliance.
- Beware of the hot steam that comes out of the steam vent during steaming or when you remove the lid. Keep your hands and face away from the steam vent of the food pot and the one on the lid to avoid scald yourself with the steam.
- The food pot becomes hot during cooking. Do not get too close to the pot or touch it with your hands to avoid scalding.
- When you open the lid during cooking, beware of the hot steam coming out of the food pot to avoid scalding. When you check the food status, use an utensil with a longer handle.
- Do not move the appliance when it is working.
- Do not remove the water pot before it cools down to room temperature and the appliance is unplugged.
- After the cooking is finished, take extra caution when removing the lid and keep it away from your body. Beware of the condensation to avoid scalding.
- Do not clean the water pot and food pot before they have cooled down to room temperature.
- Do not immerse the base in water nor rinse it under the tap.

- Do not use the water pot or food pot on open flame or on/in other heating appliances.
- Do not expose the appliance to high temperature, nor put it on or near an operating or still hot stove or cooker.
- Do not connect the appliance to an external timer to avoid hazards.
- Do not use the appliance if the plug, the power cord, the base, or the appliance itself is damaged.

Electromagnetic fields (EMF)

This Philips appliance complies with all applicable standards and regulations regarding exposure to electromagnetic fields.

Recycling

Never dispose your product with other household waste. Please inform yourself about the local rules on the separate collection of electrical and electronic products. The correct disposal of your old product helps prevent potentially negative consequences on the environment and human health.



3 Troubleshooting

This chapter summarizes the most common problems you could encounter with the appliance. If you are unable to solve the problem with the information below, contact the Consumer Care Center in your country.

Problem	Possible cause	Solution
The On/Off button is not responsive	The plug is not firmly inserted	Check and put the plug in the socket properly
	Malfunction of the main circuit board	Take the appliance to a service center authorized by Philips
There is a popping sound during cooking	Water drops on the outside of the water pot make a popping sound when being heated up	Wipe the outside of the water pot dry before cooking
The heating plate works but the cooking indicator does not light up	Malfunction of the main circuit board	Take the appliance to a service center authorized by Philips
The heating pate does not work and the cooking indicator does not light up	The appliance is not plugged in	Check if the appliance is plugged in
	Malfunction of the main circuit board	Take the appliance to a service center authorized by Philips
The cooking indicator lights up but the heating plate does not work	Malfunction of the main circuit board	Take the appliance to a service center authorized by Philips
	Malfunction of the heating plate	
The appliance does not work	You did not press the start button	Press the start button
	The heating plate is damaged or the water pot is deformed	Take the appliance to a service center authorized by Philips

Problem	Possible cause	Solution
Error code “Err” flashes on the LED screen	Water in the water pot has dried up	Switch off the appliance and unplug. Add water to the water level indication, plug in and switch on the appliance to cook again
	Malfunction of the circuit board	Take the appliance to a service center authorized by Philips
Error code “E1” flashes on the LED screen	There is an open circuit in the bottom sensor	Take the appliance to a service center authorized by Philips
Error code “E2” flashes on the LED screen	There is a short circuit in the bottom sensor	Take the appliance to a service center authorized by Philips
There is not enough soup	You did not use enough water	Add water to the water level indication
	The cooking environment is not properly sealed	Check if the sealing ring is well assembled, and if the lid is closed properly
The appliance does not switch to warm keeping mode after the cooking process is finished	Malfunction of the circuit board	Take the appliance to a service center authorized by Philips
Water leaks out of the water pot	Too much water in the water pot	Add water to the water level indication
Steam comes out of the appliance during cooking	This is normal	No action needed
Water leaks out of the appliance during cooking	There is too much water in the water pot	Add water and food according to the recipe
There is unpleasant smell during cooking	There are food residues on the heating plate	Check the heating plate and remove the residues
After using it for some time, the food pot is discolored	Food ingredients with deep color are used during cooking	This is normal for the pottery material, and does not affect normal usage

4 Guarantee and service

If you need information or if you have a problem, please visit the Philips website at www.philips.com or contact the Philips Consumer Care Center in your country (you can find its phone number in the worldwide guarantee leaflet). If there is no Consumer Care Centre in your country, go to your local Philips dealer.

1 您的汽锅醇汤煲

感谢您的惠顾，欢迎光临飞利浦！为了您能充分享受飞利浦提供的支持，请在 www.philips.com/welcome 上注册您的产品。

2 重要信息

使用产品前请仔细阅读本使用说明书，并妥善保管以供日后参考。

警告

- 本产品仅供家用。
- 本产品不打算由肢体不健全、感觉或精神上有障碍或缺乏相关经验和知识的人（包括儿童）使用，除非有负责他们安全的人对他们使用本产品进行监督或指导。照顾好儿童，确保他们不玩耍该产品。
- 将本产品连接电源之前，请确保本产品电压与当地的供电电压相符。
- 本产品只能使用带接地线的电源插座。确保插头牢固插到电源插座上。
- 如果电源软线损坏，为避免危险，必须由制造厂或其维修部或类似的专职人员来更换。
- 禁止在不稳或倾斜的台面使用本产品。
- 水锅加水时请不要超出水锅中标注的水位标示，以免工作过程中溢水，引起危险。
- 请勿用浸湿的手插接电源插头。
- 将插头接入电源插座之前，应确保加热元件、温度传感器和水锅外侧是洁净、干燥的、杂质或异物可能引起机器故障。
- 将插头插到电源插座并打开电源开关之前，请务必将装好水的水锅放到产品内。
- 小心产品在工作期间从锅盖蒸汽孔排出的热蒸汽或在打开锅盖时从汽锅中冒出的热蒸汽。手和脸不要靠近机器的热蒸汽孔和汽锅口，以免被蒸汽烫伤。
- 小心产品在工作期间陶瓷汽锅会加热至高温，请不要靠近或用手触摸汽锅，以免烫伤。
- 蒸制过程中或取下锅盖时，务必注意汽锅中冒出来的热蒸汽，避免烫伤。检查食物时，一定要使用手柄较长的厨具。
- 本产品在工作过程中严禁移动。
- 请在水锅冷却至室温后，将电源插头拔掉，才能取出水锅。
- 在烹饪完成后，请小心地取下锅盖，并保持其远离身体，注意冷凝水，以避免烫伤。
- 请在陶瓷汽锅和水锅冷却至室温后才能清洗。
- 切勿将机器底座浸入水中或放在水龙头下冲洗。
- 请勿将水锅和陶瓷汽锅直接放在火上或其他加热器具上/内加热。
- 请勿将本产品暴露在高温下，也不要放置在正在使用或仍有余热的炉子或炊具上。
- 请勿将本产品连接至外部定时器，以免发生危险。
- 如果插头，电源线，底座或产品本身已经损坏，请不要使用。

电磁场 (EMF)

本飞利浦产品符合所有有关暴露于电磁场的适用标准和法规。

回收

切勿将本产品与其它生活垃圾一起处理。请自行了解当地关于分类收集电子和电气产品的规定。正确弃置旧产品有助于避免对环境 and 人类健康造成潜在的负面影响。



3 故障种类和处理方法

本章归纳了您在使用汽锅醇汤煲时最常遇到的问题。如果您无法根据下面的信息解决问题，请与您所在国家/地区的客户服务中心联系。

故障	可能的原因	解决方法
开关操作无反应	插头没有插紧	请检查插头是否插好
	主电路板故障	送指定维修点维修
工作中发出叭的声音	锅底的水滴受热膨胀产生的破裂声音	请在烹饪前擦干水锅底部
指示灯不亮，发热盘热	电路板故障	送指定维修点维修
指示灯不亮，发热盘不热	电源没接通	请检查插头是否插好
	电路板故障	送指定维修点维修
指示灯亮，加热盘不热	电路板故障	送指定维修点维修
	加热盘故障	
机器没有工作	没有按开始按钮	请按开始按钮
	加热元件受损或水锅变形	送指定维修点维修
显示出现错误讯息 (LED 闪烁 Err)	水锅水烧干了	先关机，加水至水位线，开机，重新开始烹调
	电路板故障	送指定维修点维修
显示出现错误讯息 (LED 闪烁 E1)	底部传感器断路	送指定维修点维修
显示出现错误讯息 (LED 闪烁 E2)	底部传感器短路	送指定维修点维修
汤量不足	水量不足	请将水加至水位线
	密封性能不好	请检查密封圈是否安装到位，锅盖是否盖紧
没有自动切换至保温模式	电路板故障	送指定维修点维修
烹调期间，水溢出水锅	水量过多	请将水加至水位线
烹调期间，蒸汽溢水汽锅	汽锅工作的正常现象	无
烹调期间，水溢水汽锅	汽锅中加入了过多的水	请按食谱添加食材和水
烹调期间，产品发出异味	发热盘被异物污染	检查发热盘，除去异物
汽锅锅体使用一段时间后有色斑	在烹饪中使用了深色食材	此为陶瓷材料的正常反应，不影响正常使用

4 保修与服务

如果您需要了解信息或有任何疑问，请访问 Philips 网站 www.philips.com。您也可以与您所在国家/地区的 Philips 客户服务中心联系（可在全球保修卡中找到 Philips 客户服务中心的电话号码）。如果您所在的国家/地区没有 Philips 客户服务中心，请向当地的 Philips 经销商求助。