

PHILIPS

KJ550F-D21



ZH-S **用户手册** 3

EN **User manual** 20



目录

1	重要事项	4
	安全	4
	电磁场 (EMF)	5
	回收	5
2	您的空气消毒机	6
	产品概述	6
	控件概述	7
	空气消毒机消毒原理	8
3	使用入门	8
	安装滤网	8
	了解 Wi-Fi 指示灯	9
	Wi-Fi 连接	9
4	使用空气消毒机	10
	了解空气质量指示灯	10
	打开和关闭	11
	更改模式设置	11
	切换显示指示灯	12
	使用灯光开/关功能	12
	检查滤网状态	13
5	清洁和保养	13
	清洁计划	13
	清洁空气消毒机的机身	14
	清洁微粒感应器	14
	清洁滤网表面	15
	更换滤网	16
	滤网重置	17
6	存放	17
7	故障排除	17
8	保修与服务	19
	订购部件或附件	19

1 重要事项

安全

使用本产品之前，请仔细阅读本用户手册，并妥善保管以备日后参考。

危险

- 切勿用水或任何其它液体或（易燃性）清洁剂来清洁产品，也不要使它们进入产品，以免发生触电和/或火灾。
- 切勿在产品周围喷洒杀虫剂或香水等任何可燃材料。

警告

- 在将产品连接电源之前，请先检查产品所标电压与当地的供电电压是否相符。
- 如果电源线损坏，为避免危险，必须由飞利浦、飞利浦授权的服务中心或类似的专职人员来更换。
- 如果插头、电源线或产品本身受损，请勿再使用本产品。
- 本产品不适合由肢体不健全、感觉或精神上有障碍或缺乏相关经验和知识的人（包括儿童）使用，除非有负责他们安全的人对他们使用本产品进行监督或指导。
- 不得让儿童玩耍本产品。
- 请勿让儿童在无人监督的情况下清洁和保养产品。
- 切勿堵塞进风口和出风口，例如不要将任何物体放置在出风口上或进风口前方。
- 确保异物未通过出风口进入产品内部。

小心

- 本产品不能替代正常通风、日常吸尘或者在烹饪时使用的抽油烟机。
- 一定要在干燥、稳固、平整且水平的表面上放置和使用本产品。
- 产品周围要留出至少 20 厘米的空间，产品上方至少要留出 30 厘米的空间。
- 请勿坐在或站在产品上面。切勿在本产品上放置任何物品。
- 切勿将产品直接放在空调下方，以防冷凝水滴到产品中。

- 只能使用飞利浦专门为本产品设计的原装滤网。切勿使用任何其它滤网。
- 燃烧滤网可能会造成不可逆转的人体危害和/或危及他人生命安全。请勿将滤网用作燃料或类似用途。
- 请勿用硬物敲击本产品（尤其是进风口和出风口）。
- 请勿将手指或物体插入出风口或进风口，以防止产品出现物理损坏或发生故障。
- 当您使用室内喷雾式驱虫剂或在充满油污、易燃气体或化学烟雾的地方时，请勿使用本产品。
- 请勿在气体用具、加热装置或火炉附近使用本产品。
- 当您移动、清洁产品、更换滤网或执行其他维护时，请始终拔下产品的电源插头。
- 本产品仅限于家用并在正常运行条件下使用。
- 请勿在潮湿环境或高湿度或高温环境中（例如浴室、卫生间或厨房）或在温度变化较大的房间内使用本产品。
- 本产品不能去除一氧化碳 (CO) 或氡 (Rn)。因此在发生燃烧和危险化学品事故时，不能作为安全设备使用。
- 请勿使用未经飞利浦授权的滤网，以确保设备正常运行、空气净化性能以及滤网材料的安全。

电磁场 (EMF)

本飞利浦产品符合所有有关暴露于电磁场的适用标准和法规。

回收

弃置产品时，请不要将它与一般生活垃圾一同丢弃，应将其交给官方指定的回收中心。这样做有利于环保。

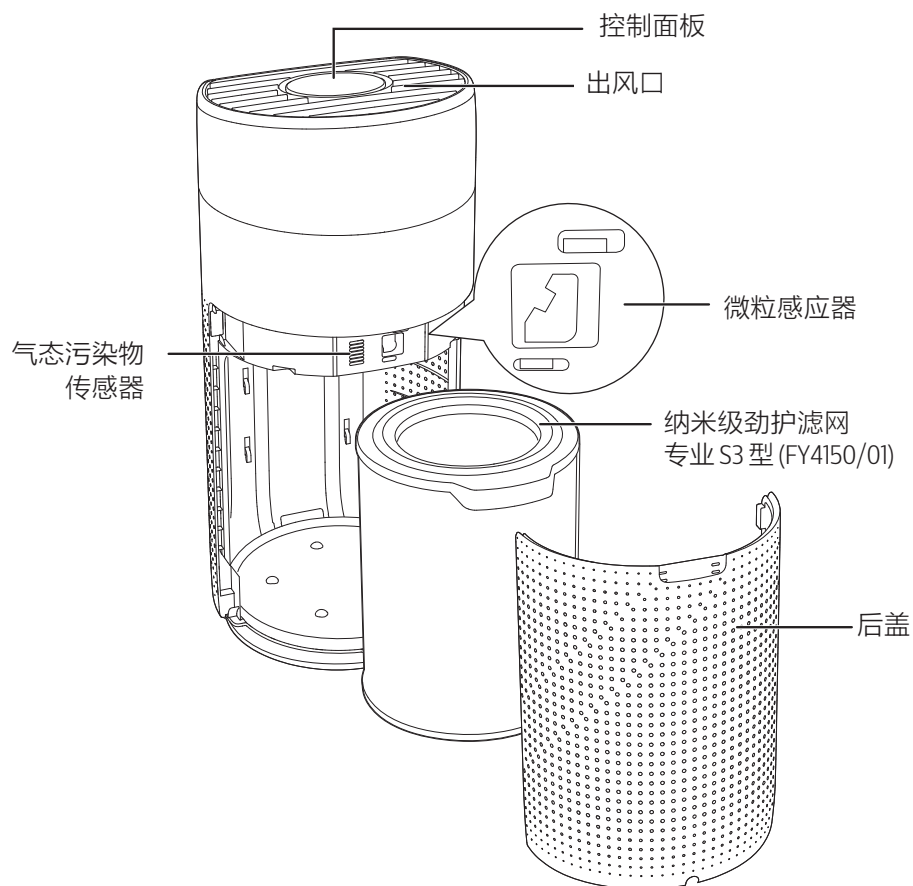
请遵循您所在国家/地区的电器及电子产品分类回收规定。正确弃置产品有助于避免对环境和人类健康造成负面影响。

2 您的空气消毒机

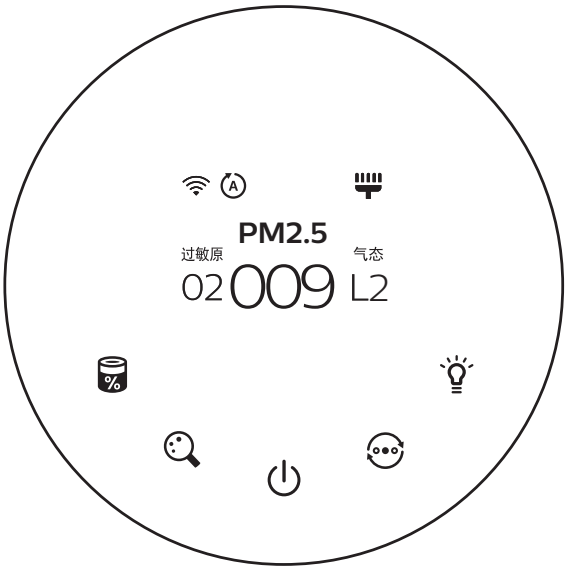
感谢您的惠顾，欢迎光临飞利浦！

为了您能充分享受飞利浦提供的支持，请在以下网站注册您的产品：
www.philips.com/welcome。

产品概述



控件概述



控制按钮

	滤网状态/重置按钮		显示切换按钮
	开/关按钮		模式切换按钮
	灯光开/关按钮		

显示面板

	Wi-Fi 指示灯		自动模式
	劲速模式		睡眠模式
过敏原	室内过敏原指数 (IAI)	PM2.5	PM2.5 显示
气态污染物	气态污染物读数		滤网清洁提醒
	滤网更换提醒		

空气消毒机杀菌原理

杀菌因子：过滤

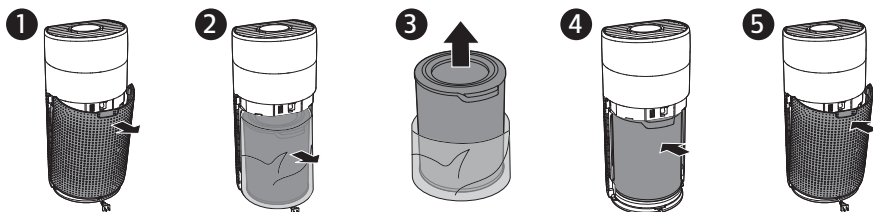
空气消毒机使用高效过滤器过滤捕捉空气中的细菌。空气中的细菌多以飞沫（大颗粒）及飞沫核（气溶胶）等形式存在，大的飞沫通常会自然沉降，飞沫核粒径在亚微米至微米级别，细菌本身的尺寸也在几十纳米到几百纳米之间。空气消毒机中的 HEPA 滤网对空气中小至 3 纳米大至几微米的气溶胶颗粒均具有很好的过滤效果，所以细菌均能被高效捕捉在消毒机的 HEPA 滤网上。由于滤网中没有合适的养分及湿度条件，被捕捉在滤网上的细菌本身会随时间自然灭活，且滤网中的活性过滤物质会加速细菌的灭活。

3 使用入门

安装滤网

首次使用本产品之前，先拆掉滤网的所有包装。

注意：确保先从电源插座上拔下空气消毒机的插头，然后再安装滤网。




- 1 拉开后盖，并将其从产品上取下。
- 2 从产品上取出滤网。
- 3 拆掉滤网的所有包装材料。
- 4 把滤网放回产品内。
- 5 重新装上后盖。

了解 Wi-Fi 指示灯

Wi-Fi 图标状态	Wi-Fi 连接状态
橙色闪烁	正在连接智能手机
橙色常亮	已连接至智能手机
白色闪烁	正在连接服务器
白色常亮	已连接至服务器
	Wi-Fi 功能未连接





Wi-Fi 连接

注意：

- 如果您想要将多个空气消毒机连接到您的智能设备，则必须逐一执行这些步骤。先完成对一个产品的设置，然后再打开其他产品。
 - 确保您的空气消毒机与 Wi-Fi 路由器之间的距离小于 10 米，且两者之间不存在任何障碍物。
 - 如果空气消毒机安装在房间角落 Wi-Fi 信号较弱的位置，建议设置 Wi-Fi 信号增强器，以便远程使用。
- 1 扫描二维码，或从应用程序市场下载“**小京鱼**”应用程序，然后将该应用程序安装到您的智能设备上。
 - 2 确保您的智能设备已经连接至 Wi-Fi 网络。启动应用程序。
 - 3 轻击“+”，扫描用户手册或包装盒上的二维码。
 - 4 确保 Wi-Fi 指示灯  呈橙色闪烁。轻击**下一步**。



注意：

- 如果 Wi-Fi 指示灯  不是橙色，请轻触  和  按钮进入配对模式。
- 5 填入 Wi-Fi 信息，然后轻击**下一步**以添加新设备。
 - 6 在配对并且连接成功后，轻击**完成**。Wi-Fi 指示灯  会呈白色亮起。
 - 7 如果要添加多台智能设备与本空气消毒机连接，请轻击应用程序右上角的**设置**。轻击 **与家人共享**以扫描生成的二维码。
 - 8 在要连接到本产品的设备上，下载并安装“**小京鱼**”应用程序，扫描该二维码，然后按照步骤 1-6 添加更多设备。
 - 9 如果连接失败或 Wi-Fi 信息已变更，请按照步骤 1-6 重新连接 Wi-Fi 网络。

4 使用空气消毒机

了解空气质量指示灯

空气消毒机打开后，空气质量指示灯将自动亮起，并按顺序亮起所有颜色。大约 30 秒后，空气质量指示灯显示稳定。指示灯的颜色取决于 PM2.5，IAI（室内过敏原指数）和 Gas（气态污染物指数）三个指标中风险最高的一个。

空气质量指示灯颜色	空气质量级别
蓝色	良好
蓝紫色	一般
紫红色	较差
红色	很差

PM2.5

即使是空气中最细微的颗粒变化，AeraSense 灵智感应技术也可精确地检测并快速响应。它提供实时的 PM2.5 反馈，让您安枕无忧。

大多数室内空气污染物属于 PM2.5 – 它是指小于 2.5 微米的悬浮颗粒污染物。常见的室内微粒源有烟草烟雾、烹饪、点燃的蜡烛。此外，一些悬浮细菌、最小的霉菌芽孢、宠物过敏原和尘螨过敏原颗粒也属于 PM2.5。

PM2.5 级别	空气质量指示灯颜色
≤35	蓝色
36 - 75	蓝紫色
76 - 115	紫红色
>115	红色

过敏原

专业级 AeraSense 传感器可检测室内空气过敏原的级别，然后用 1 至 12 之间的数字进行级别反馈，显示室内空气过敏原的潜在风险级别。1 表示最佳空气质量。

过敏原级别	空气质量指示灯颜色
1-3	蓝色
4-6	蓝紫色
7-9	紫红色
10-12	红色

气态污染物显示

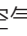
使用高级气态污染物传感器，范围为 L1 至 L4 的显示值可显示检测到的潜在有害气体（包括 VOC、异味等）变化情况。L1 表示最佳空气质量。

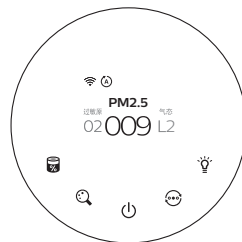
气态污染物级别	空气质量指示灯颜色
L1	蓝色
L2	蓝紫色
L3	紫红色
L4	红色

打开和关闭

注意：

- 为了获得出色的净化性能，请关闭门窗。
- 使窗帘远离进风口或出风口。



- 1 将空气消毒机的插头插入电源插座。
- 2 轻触  可打开空气消毒机。
 - ↳ 首次使用时，应用程序的二维码将显示在屏幕上，您可以扫描并下载应用程序。
 - ↳ 空气消毒机在自动模式下工作，并且屏幕中心显示 PM2.5 数值。
 - ↳ 测量空气质量后，空气消毒机自动切换至显示屏，并显示 PM2.5、过敏原和气态污染物读数中最高数值。

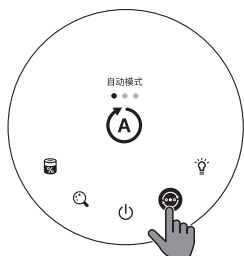


- 3 轻触并按住  3 秒可关闭空气消毒机。

注意：如果空气消毒机关闭后仍与电源插座连接，则再次打开后，其将以之前的设置运行。

更改模式设置

您可以轻触  按钮选择自动模式、劲速模式或睡眠模式。轻触  按钮一次即可显示当前模式。



自动模式 (A)

在自动模式下，双传感器实时感应空气质量，设备会根据环境空气质量自动调整风扇速度。



劲速模式 (S)

在劲速模式下，空气消毒机会以最高速度运行。



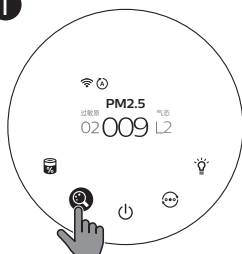
睡眠模式(☾)

在睡眠模式下，空气消毒机将以较低的速度安静地运行。3 秒钟后，屏幕灯光熄灭。

切换显示指示灯



注意：默认情况下，PM2.5 级别显示在屏幕中央。

1

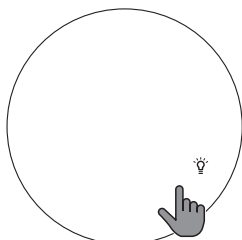
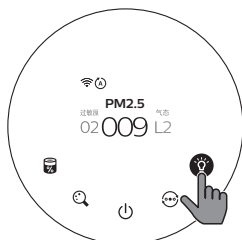


2



- 1 轻触  按钮一次即可切换显示指示灯。
- 2 轻触并按住  按钮 3 秒钟，检查 PM2.5/气态污染物/过敏原级别的解释。


使用灯光开/关功能

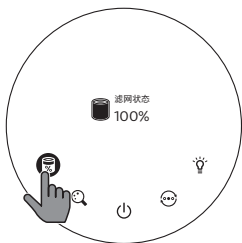


借助光感应器，控制面板可根据环境光线自动打开、关闭或变暗。在环境光线较暗时，控制面板的亮度也将变暗或关闭。此时轻触控制面板的按键区，可以唤醒控制面板查看空气情况。如果没有进一步操作，指示灯和控制面板将再次变暗，继续保持与环境光线相匹配。

您可以触摸灯光开/关按钮  关闭指示灯和控制面板，按任意键唤醒所有指示灯。

检查滤网状态

- 轻触滤网状态检查/重置  按钮，检查滤网使用寿命状态。
↳ 屏幕上将显示滤网剩余使用寿命的百分比。



图标颜色	滤网使用寿命指示	显示屏 (%)
蓝色	最佳使用寿命	16-100
蓝紫色	良好使用寿命	9-15
紫红色	使用寿命几乎达到极限	4-8
红色	使用寿命结束，更换滤网	0-3

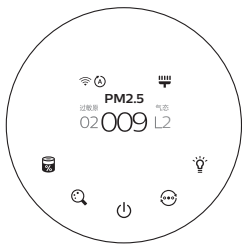
注意：如果 3 秒后没有操作，产品将返回正常显示。

5 清洁和保养

注意：

- 在清洁之前，请务必拔下产品的电源插头。
- 切勿将本产品浸入水中或任何其它液体中。
- 切勿使用研磨性、腐蚀性或易燃性清洁剂（例如漂白剂或酒精）清洁本产品的任何部件。
- 切勿使用任何液体（包括水）清洁滤网。
- 请勿尝试用吸尘器清洁微粒感应器和气态污染物传感器。

清洁计划



频率	清洁方法
必要时	用湿布擦拭产品的织物部分，用柔软的干布擦拭产品的塑料部分
	清洁出风口盖
每两个月	使用干棉签清洁微粒感应器
当屏幕上显示  时	清洁滤网表面

清洁空气消毒机的机身

定期清洁空气消毒机的内侧和外侧，以防止灰尘积聚。

- 1 用湿布轻轻擦拭织物表面。
- 2 使用柔软的干布清洁空气消毒机的内部和外部及出风口。

注意：

- 产品上覆盖的织物无法去除。
- 不要用热水、酒精、刺激性清洁剂清洁织物。

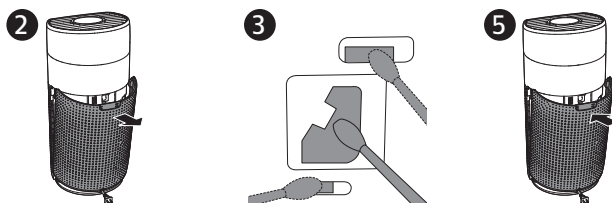
清洁微粒感应器

每 2 个月清洁一次微粒感应器，确保产品以最佳性能运行。

注意：

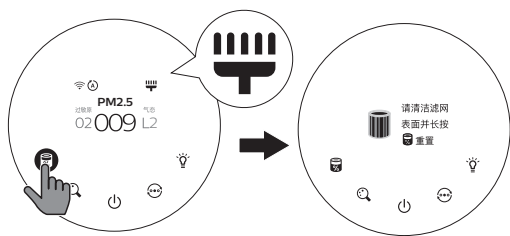
- 如果将空气消毒机用于多尘环境，则可能需要更频繁地进行清洁。
- 如果室内的湿度非常高，则微粒感应器上可能会形成冷凝水，即使空气质量确实很好，空气质量指示灯也可能会指示空气质量较差。如果发生这种情况，请清洁微粒感应器。
- 无需清洁气态污染物传感器。

- 1 关闭空气消毒机，从电源插座上拔下插头。



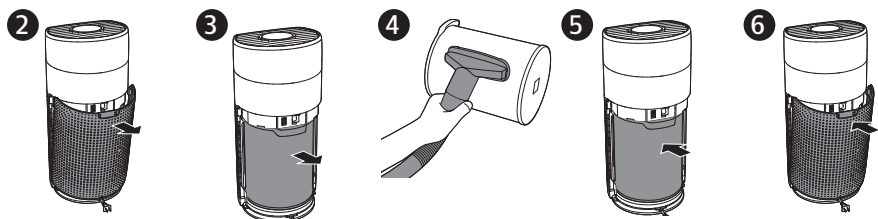
- 2 拉开后盖，并将其从产品上取下。
- 3 使用湿棉签清洁微粒感应器。
- 4 使用干棉签彻底擦干所有部件。
- 5 重新装上后盖。

清洁滤网表面



滤网提示灯状态	操作
屏幕上显示滤网清洁提醒	使用吸尘器清洁滤网表面

1 关闭空气消毒机，从电源插座上拔下插头。



2 拉开后盖，并将其从产品上取下。

3 从产品上取出滤网。

4 使用吸尘器清洁滤网表面。

5 把滤网放回产品内。

6 重新装上后盖。

7 将空气消毒机的插头插入电源插座。

8 轻触 按钮 启动产品。

9 轻触并按住滤网状态/重置按钮 3 秒可重置滤网清洁时间。


↳ 屏幕显示消息“滤网清洁已完成”。

10 清洁滤网后，彻底清洗双手。



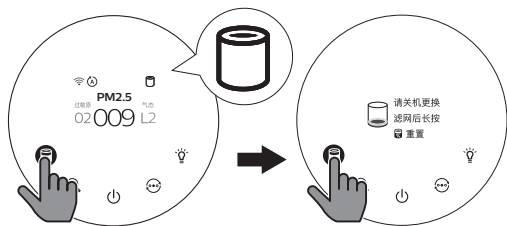
更换滤网

了解健康空气智能锁

该空气消毒机配有滤网更换指示灯，旨在确保空气消毒机运行时，滤网处于最佳工作状态。当滤网需要更换时，滤网更换提醒  将呈红色亮起。


如果未及时更换滤网，则空气消毒机将停止运行并自动锁定，以保护室内的空气质量。请尽快更换滤网。

更换滤网

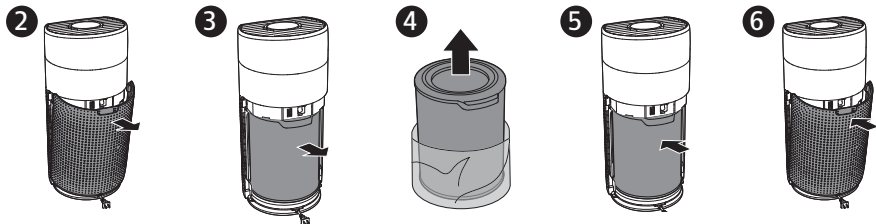


注意：

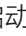

- 滤网不可水洗，也不可重复使用。
- 在更换滤网之前，务必先关闭空气消毒机并从电源插座上拔下插头。

滤网提示灯状态	操作
滤网更换提醒  亮起	更换纳米级劲护滤网 专业 S3 型 (FY4150/01)

1 关闭空气消毒机，从电源插座上拔下插头。




- 2 拉开后盖，并将其从产品上取下。
- 3 从产品上取出滤网。
- 4 拆掉新滤网的所有包装材料。
- 5 将新滤网装入产品。
- 6 重新装上后盖。

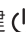


- 7 将空气消毒机的插头插入电源插座。
- 8 轻触  按钮 启动产品。
- 9 轻触并按住滤网状态/重置按钮  3 秒可重置滤网使用寿命计数器。
- 10 更换滤网后，彻底清洗双手。

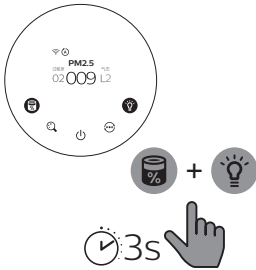
注意：请勿闻滤网的气味，因为其包含从空气中收集的污染物。



滤网重置

在屏幕上显示滤网更换提醒 () 之前，您也可以更换滤网。在更换滤网后，您需要手动重置滤网使用寿命计数器。

- 1 轻触并按住电源键  3 秒关闭空气消毒机并拔掉电源插头。
- 2 将电源插头插入插座。
- 3 开机后的 15 秒内，同时轻触并按住  和  按钮 3 秒重置滤网使用寿命计数器。




6 存放

- 1 关闭空气消毒机，从电源插座上拔下插头。
- 2 清洁空气消毒机、微粒感应器和滤网表面（请参阅“清洁和保养”一章）。
- 3 待所有部件完全晾干后再进行存放。
- 4 将滤网装入密封的塑料袋中。
- 5 将空气消毒机和滤网存放在阴凉干燥处。
- 6 拆装滤网后，务必彻底洗净双手。

7 故障排除

本章归纳了您在使用产品时最常遇到的问题。如果您无法根据下面的信息解决问题，请与您所在国家/地区的客户服务中心联系。

问题	可能的解决方法
产品即使接通电源也无法工作。	<ul style="list-style-type: none">· 检查后盖是否安装正确。· 滤网更换提醒指示灯持续亮起，但您未更换相应的滤网。结果是本产品现在已被锁定。在此情况下，更换滤网并长按  重置滤网使用寿命计数器。

问题	可能的解决方法
出风口排出的气流比之前明显减弱。	<ul style="list-style-type: none"> · 滤网表面变脏。清洁滤网表面（请参阅“清洁和保养”一章）。
即使在产品已经运行很长时间以后，空气质量也未见显著改善。	<ul style="list-style-type: none"> · 检查滤网包装材料是否已去除。 · 滤网没有放入产品内部。确保已正确安装滤网 (FY4150/01)。 · 微粒感应器是湿的。室内湿度过高，因此形成了冷凝水。确保微粒感应器清洁干燥（请参阅“清洁和保养”一章）。 · 房间面积较大或室外空气质量较差。为了获得最佳的净化性能，请在使用空气消毒机时关闭门窗。 · 室内污染源形式各异。例如，吸烟、烹饪、熏香、香水或酒精。 · 滤网达到了使用寿命的终点。换用新滤网。
空气质量指示灯的颜色始终保持不变。	<ul style="list-style-type: none"> · 微粒感应器变脏。清洁微粒感应器（请参阅“清洁和保养”一章）。
产品散发出一种奇怪的味道。	<ul style="list-style-type: none"> · 前几次使用产品时，其可能会产生塑料味。这是正常的。但是，如果产品在取出滤网后依然发出烧焦的气味，请联系飞利浦经销商或经授权的飞利浦服务中心。由于吸收室内气体，该滤网可能会在使用后发出气味。滤网经过日晒之后即可重复使用，建议您采用这种方式再次激活滤网。如果异味仍然存在，建议更换滤网。
产品声音过大。	<ul style="list-style-type: none"> · 如果产品在劲速模式下运行，这是正常现象。 · 在自动模式下，如果产品声音变大，是因为设备检测到空气质量变差，自动提高运行速度。您可以选择噪音更低的睡眠模式。 · 如果有任何异物掉入出风口，也可能导致异响。立即关闭空气消毒机，将其翻转过来，从产品中取出异物。 · 如果产品发出异常的声音，请联系您所在国家/地区的客户服务中心。
屏幕显示后盖已打开。	<ul style="list-style-type: none"> · 先关闭电源，然后正确安装后盖。接通产品电源，然后重试。
屏幕上显示错误代码“E1”。	<ul style="list-style-type: none"> · 马达出现故障。请与您所在国家/地区的客户服务中心联系。

问题	可能的解决方法
Wi-Fi 设置不成功。	<ul style="list-style-type: none"> · 如果您的空气消毒机连接到的路由器为双频段且当前未连接到 2.4GHz 网络，请切换至同一路由器 (2.4GHz) 的另一频段并尝试再次将设备配对。不支持 5GHz 网络。 · 不支持 Web 验证网络。 · 检查空气消毒机是否在 Wi-Fi 路由器的范围内。您可以尝试使设备更靠近 Wi-Fi 路由器。 · 检查网络名称是否正确。网络名称区分大小写。 · 检查 Wi-Fi 密码是否正确。密码区分大小写。 · 使用“Wi-Fi 连接”部分中的说明重试设置。 · Wi-Fi 连接可能被电磁或其他干扰中断。使本产品远离可能造成干扰的其他电子设备。 · 检查移动设备是否处于飞行模式。确保在连接 Wi-Fi 网络时禁用飞行模式。 · 参阅应用程序中的帮助部分，以获得广泛和最新的故障排除技巧。

8 保修与服务

如果需要信息或有任何疑问，请访问飞利浦网站：www.philips.com 请联系您所在国家/地区的飞利浦客户服务中心（可在全球保修卡中找到飞利浦客户服务中心的电话号码）。如果您所在的国家/地区没有飞利浦客户服务中心，请向当地的飞利浦经销商求助。

订购部件或附件

如果您必须更换部件或需要购买额外的部件，请转到您的飞利浦经销商或访问 www.philips.com/support。

如果获取部件有问题，请与您所在国家/地区的飞利浦客户服务中心联系（可在全球保修卡中找到其电话号码）。

Contents

1	Important	21
	Safety	21
	Electromagnetic fields (EMF)	23
	Recycling	23
2	Your air disinfecter	24
	Product overview	24
	Controls overview	25
	Air disinfecter principle	26
3	Getting started	26
	Installing the filter	26
	Understanding Wi-Fi indicator	27
	Wi-Fi connection	27
4	Using the air disinfecter	28
	Understanding the air quality light	28
	Turning on and off	28
	Changing the mode setting	29
	Switching the display indicator	30
	Using the light on/off function	30
	Checking the filter status	31
5	Cleaning and maintenance	31
	Cleaning schedule	31
	Cleaning the body of the air disinfecter	32
	Cleaning the particle sensor	32
	Cleaning the surface of the filter	33
	Replacing the filter	34
	Filter reset	35
6	Storage	36
7	Troubleshooting	36
8	Guarantee and service	38
	Order parts or accessories	38

1 Important

Safety

Read this user manual carefully before you use the appliance, and save it for future reference.

Danger

- Do not clean the appliance with water, any other liquid, or a (flammable) detergent, nor let them enter the appliance, to avoid electric shock and/or a fire hazard.
- Do not spray any flammable materials such as insecticides or fragrance around the appliance.

Warning

- Check if the voltage indicated on the appliance corresponds to the local power voltage before you connect the appliance.
- If the power cord is damaged, you must have it replaced by Philips, a service center authorized by Philips, or similarly qualified persons in order to avoid a hazard.
- Do not use the appliance if the plug, the power cord, or the appliance itself is damaged.
- This appliance is not intended for use by persons (including children) with reduced physical, sensory, or mental capabilities, or lack of experience and knowledge, unless they have been given supervision or instruction concerning use of the appliance by a person responsible for their safety.
- Child shall not play with the appliance.
- Cleaning and maintenance shall not be made by children without supervision.
- Do not block the air inlet and outlet, e.g. by placing any items on the air outlet or in front of the air inlet.
- Make sure that foreign objects do not fall into the appliance through the air outlet.

Caution

- This appliance is not a substitute for proper ventilation, regular vacuum cleaning, or use of an extractor hood or fan while cooking.
- Always place and use the appliance on a dry, stable, level, and horizontal surface.
- Leave at least 20cm free space around the appliance and leave at least 30cm free space above the appliance.
- Do not sit or stand on the appliance. Do not place anything on top of the appliance.
- Do not place the appliance directly below an air conditioner to prevent condensation from dripping onto the appliance.
- Only use the original Philips filters specially intended for this appliance. Do not use any other filters.
- Combustion of the filter may cause irreversible human hazard and/or jeopardize other lives. Do not use the filter as fuel or for similar purpose.
- Avoid knocking against the appliance (the air inlet and outlet in particular) with hard objects.
- Do not insert your fingers or objects into the air outlet or the air inlet to prevent physical injury or malfunctioning of the appliance.
- Do not use this appliance when you have used indoor smoke-type insect repellents or in places with oily residues, burning incense, or chemical fumes.
- Do not use the appliance near gas appliances, heating devices or fireplaces.
- Always unplug the appliance when you want to move, clean appliance, replace the filter or carry out other maintenance.
- The appliance is only intended for household use under normal operating conditions.
- Do not use the appliance in wet surroundings or in surroundings with high humidity or high ambient temperatures, such as the bathroom, toilet, or kitchen, or in a room with major temperature changes.

- The appliance does not remove carbon monoxide (CO) or radon (Rn). It cannot be used as a safety device in case of accidents with combustion processes and hazardous chemicals.
- Do not use the filter unauthorized by Philips in order to make sure normal running of the appliance, the air purification performance and the safety of the filter material.

Electromagnetic fields (EMF)

This Philips appliance complies with all applicable standards and regulations regarding exposure to electromagnetic fields.

Recycling

Do not throw away the product with the normal household waste at the end of its life, but hand it in at an official collection point for recycling. By doing this, you help to preserve the environment.

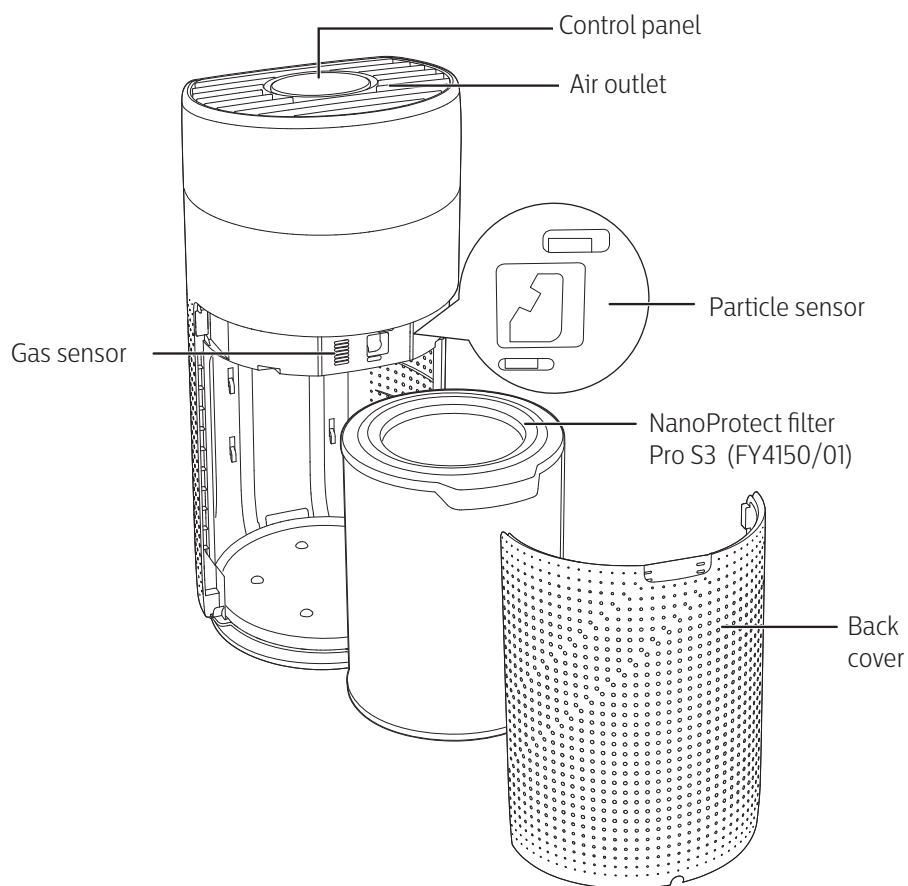
Follow your country's rules for the separate collection of electrical and electronic products. Correct disposal helps prevent negative consequences for the environment and human health.

2 Your air disinfecter

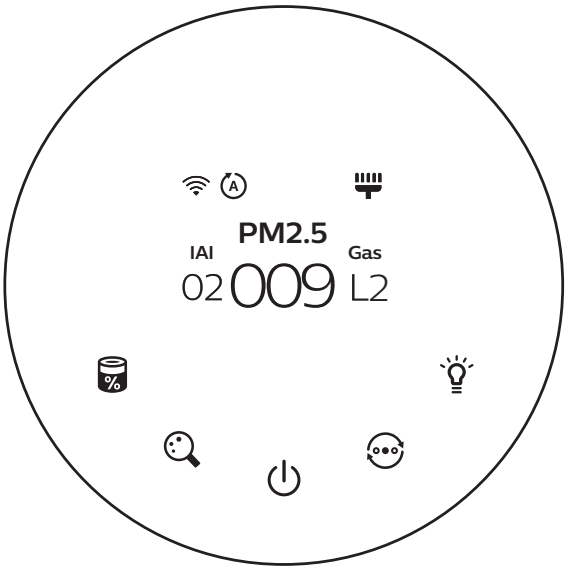
Congratulations on your purchase, and welcome to Philips!

To fully benefit from the support that Philips offers, register your product at www.philips.com/welcome.

Product overview



Controls overview



Control buttons

	Filter status/reset button		Display switch button
	Power on/off button		Mode switch button
	Light on/off button		

Display panel

	Wi-Fi indicator		Auto mode
	Turbo mode		Sleep mode
IAI	Indoor Allergen Index display	PM2.5	PM2.5 display
Gas	Gas pollution display		Filter cleaning alert
	Filter replacement alert		

Air disinfectant principle

Disinfection factor: filtration

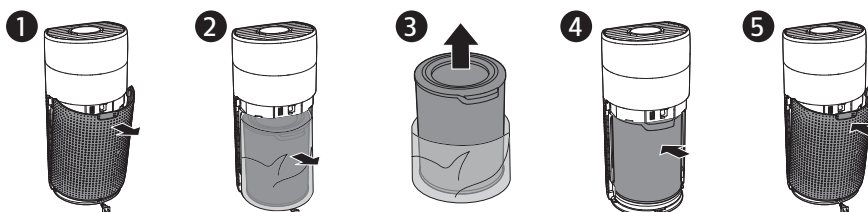
Air disinfectant is equipped with high efficiency HEPA filter can filtrate airborne bacteria efficiently. Air borne bacteria is mainly in the type of droplet and droplet nuclei (aerosol). Large size droplets will naturally deposit. Droplet nuclei with size range from submicron to several microns, together with bacteria itself with size range from tens to hundreds of nanometers, these particles will all be captured by HEPA filter in the disinfectant, which has high filtration ability to aerosol particles with size from as small as 3nm to several microns. As there are no suitable nutrients and humidity conditions in the filter, the bacteria captured by HEPA filter will naturally inactivate over time, and the active substances in the filter will also accelerate the inactivation of bacteria.

3 Getting started

Installing the filter


Remove all packaging of the filter before first use.

Note: Make sure the air disinfectant is unplugged from the electrical outlet before installing the filter.



- 1 Pull the back cover and remove it from the appliance.
- 2 Pull the filter from the appliance.
- 3 Remove all packaging materials of the filter.
- 4 Put the filter back into the appliance.
- 5 Reattach the back cover.


Understanding Wi-Fi indicator

Wi-Fi icon status	Wi-Fi connection status
Blink in orange	Connecting to the smartphone
Stable in orange	Connected to the smartphone
Blink in white	Connecting to the server
Stable in white	Connected to the server
	Wi-Fi function disabled





Wi-Fi connection

Note:

- If you want to connect more than one air disinfecter to your smart device, you have to do this one by one. Complete the set up of one appliance before you turn on the other appliance.
- Make sure the distance between your air disinfecter and Wi-Fi router is less than 10m without any obstruction.
- If the air disinfecter installed at room corner has a weak Wi-Fi signal, it's recommended to set Wi-Fi booster for remote usage.

- 1 Scan the QR code, or download the “**JD Whale**” App from App market, and then install the App in your smart device.
- 2 Make sure your smart device is connected to your Wi-Fi network. Launch the App.
- 3 Tap “+”, scan the QR code from the user manual or packing box.
- 4 Make sure that the Wi-Fi indicator  blinks orange. Tap **Next**.

Note:

- If the Wi-Fi indicator  is not in orange, touch  and  to enter pairing mode.
- 5 Fill the Wi-Fi information and tap **Next** to add a new device.
 - 6 After the successful pairing and connection, tap **Finish**. The Wi-Fi indicator  will light up white.
 - 7 If you want to add more smart device to connect with this air disinfecter, tap **Settings** on the top right of the App. Tap Share with family to scan the generated QR code.
 - 8 On the device which you want to connect to this appliance, download and install the “**JD Whale**” App, scan this QR code and follow step 1-6 to add more device.
 - 9 If the connection fails or Wi-Fi information is changed, follow step 1-6 to reconnect the Wi-Fi network.

Scan the QR code to download JD Whale App



Use your JD account to login the App

4 Using the air disinfectors

Understanding the air quality light

The air quality light automatically goes on when the air disinfectors are switched on, and lights up all colors in sequence. After approximately 30 seconds, the air quality light becomes stable. The color of the air quality light is determined by the highest risk index among PM2.5, IAI and Gas readings.

Air quality light color	Air quality level
Blue	Good
Blue-purple	Fair
Purple-red	Poor
Red	Very poor

PM2.5

AeraSense sensing technology accurately detects and quickly responds to even the slightest particle change in the air. It provides you with reassurance with real-time PM2.5 feedback.

Most of the indoor air pollutants fall under PM2.5 – which refers to airborne particle pollutants smaller than 2.5 micrometers.

Common indoor sources of fine particles are tobacco smoke, cooking, burning candles. Some airborne bacteria and the smallest mold spores, pet allergen and dust mite allergen particles also fall under PM2.5.

PM2.5 level	Air quality light color
≤35	Blue
36-75	Blue-purple
76-115	Purple-red
>115	Red

IAI

The professional-grade **AeraSense** sensor detects the level of indoor air allergen and with numerical feedback from 1 to 12 the potential risk level of indoor air allergens can be displayed. 1 indicates best air quality.

IAI level	Air quality light color
1-3	Blue
4-6	Blue-purple
7-9	Purple-red
10-12	Red

GAS



With an advanced gas sensor, a display ranging from L1 to L4 shows the level change of potential harmful gases (incl. VOC, odor, etc.) detected. L1 indicates best air quality.

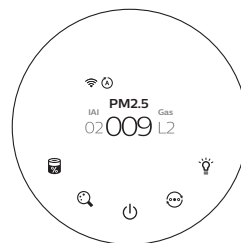
Gas level	Air quality light color
L1	Blue
L2	Blue-purple
L3	Purple-red
L4	Red

Turning on and off

Note:



- For optimum purification performance, close doors and windows.
- Keep curtains away from the air inlet or air outlet.

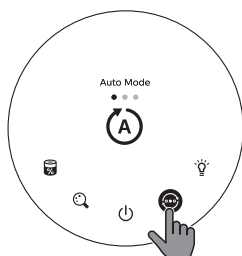
- 1 Put the plug of the air disinfectant in the power socket.
- 2 Touch  to switch on the air disinfectant.
 - ↳ The QR code for App is displayed on the screen for the first use, you can scan it and download the App.
 - ↳ The air disinfectant operates in the auto mode with PM2.5 displayed on the center of the screen.
 - ↳ After measuring the air quality, the air disinfectant automatically switches to the display which has the highest readings among PM2.5, IAI and Gas.
- 3 Touch and hold the  button for 3 seconds to switch off the air disinfectant.



Note: If the air disinfectant stays connected to the electrical outlet after turning OFF, the air disinfectant will operate under the previous settings when turned ON again.

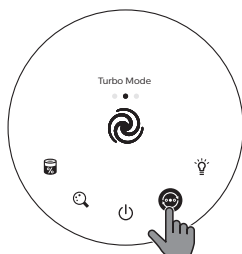
Changing the mode setting

You can choose Auto mode, Turbo mode or the Sleep mode by touching the  button. Touch the  button once to display the current mode.



Auto mode ()

In Auto mode, the dual-sensor sense the air quality in real-time and the appliance automatically adjusts the fan speed in accordance with the ambient air quality.



Turbo mode ()

In Turbo mode, the air disinfectant operates on the highest speed.



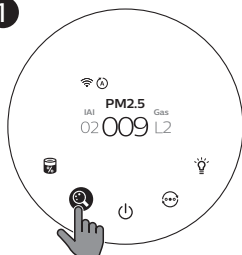
Sleep mode (🌙)

In Sleep mode, the air disinfectant operates quietly at a low speed. After 3 seconds, the screen lights off.

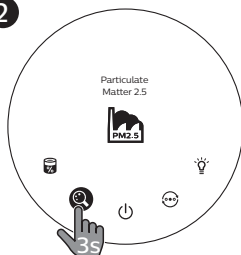
Switching the display indicator

Note: The PM2.5 level is displayed on the central of the screen by default.

1

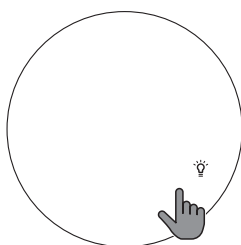
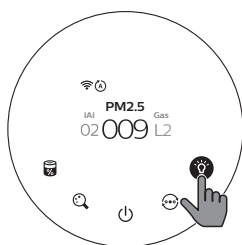


2



- 1 Touch the 🔍 button once to switch the display indicator.
- 2 Touch and hold the 🔍 button for 3 seconds to check the explanation of PM2.5/Gas/ IAI level.

Using the light on/off function

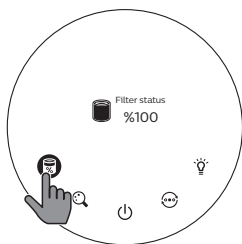


With the light sensor, the control panel can automatically turn on, turn off or dim according to the ambient light. The control panel will be off or dim when the ambient light is dark. You can touch any button to wake up all lights. Then, if no further operation, all lights will be off or dim again to match with the ambient light.

You can touch the light on/off button 🌞 manually to turn off all lights and the control panel. Touch any button to wake up all lights.

Checking the filter status

- Touch the filter status check/reset  button to check the filter service life status.
 - ↳ The percentage of remaining service life of the filter displays on the screen.



Icon color	Filter life indication	Display (%)
Blue	Optimal service life	16-100
Blue-purple	Good service life	9-15
Purple-red	Service life almost reaches the end	4-8
Red	Service life ends, replace the filter	0-3

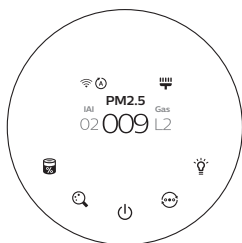
Note: The appliance goes back to normal display if no operations after 3 seconds.


5 Cleaning and maintenance

Note:

- Always unplug the appliance before you clean it.
- Never immerse the appliance in water or any other liquid.
- Never use abrasive, aggressive, or flammable cleaning agents such as bleach or alcohol to clean any part of the appliance.
- Never use any liquids (including water) to clean the filter.
- Do not attempt to clean the particle sensor and gas sensor with a vacuum.

Cleaning schedule



Frequency	Cleaning method
When necessary	Wipe the fabric part of the appliance with a damp cloth, wipe the plastic part of the appliance with a soft, dry cloth
	Clean the air outlet cover
Every two months	Clean the particle sensor with a dry cotton swab
When  displays on the screen	Clean the surface of the filter

Cleaning the body of the air disinfecter

Regularly clean the inside and outside of the air disinfecter to prevent dust from collecting.

- 1 Wipe the fabric surface gently with a damp cloth.
- 2 Use a soft, dry cloth to clean both the interior and exterior of the air disinfecter and the air outlet.

Note:

- The fabric covered on the appliance can not be removed.
- Do not use hot water, alcohol, harsh cleaners to clean the fabric.

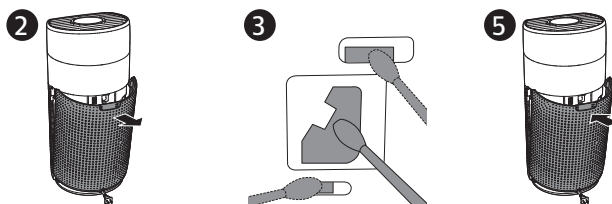
Cleaning the particle sensor

Clean the particle sensor every 2 months for optimal functioning of the appliance.

Note:

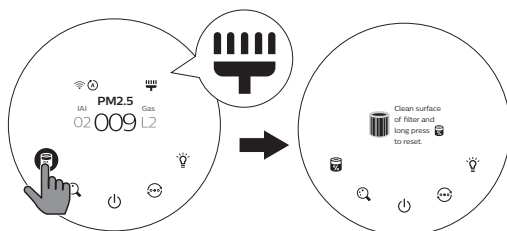
- If the air disinfecter is used in a dusty environment, it may need to be cleaned more often.
- If the humidity level in the room is very high, condensation may develop on the particle sensor and the air quality light may indicate a more poor air quality even though the air quality is actually good. If this occurs, clean the particle sensor.
- The gas sensor doesn't need to be cleaned.


- 1 Switch off the air disinfecter and unplug from the power socket.



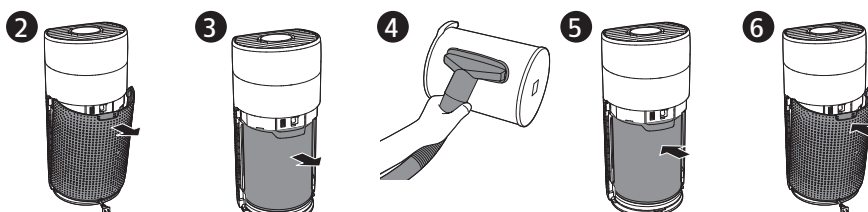
- 2 Pull the back cover and remove it from the appliance.
- 3 Clean the particle sensor with a damp cotton swab.
- 4 Dry all parts thoroughly with a dry cotton swab.
- 5 Reattach the back cover.



Cleaning the surface of the filter

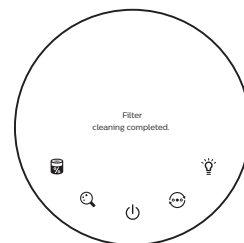


Filter alert light status	Action
The filter cleaning alert  displays on the screen	Clean the surface of the filter with a vacuum

- 1 Switch off the air disinfecter and unplug from the power socket.



- 2 Pull the back cover and remove it from the appliance.
- 3 Pull the filter from the appliance.
- 4 Clean the surface of the filter with a vacuum.
- 5 Put the filter back into the appliance.
- 6 Reattach the back cover.
- 7 Put the plug of the air disinfecter in the power socket.
- 8 Touch the  button to switch on the appliance.
- 9 Touch and hold the filter status check/reset button  for 3 seconds to reset the filter cleaning time.
 - ➔ The screen displays a message "Filter cleaning completed".
- 10 Wash your hands thoroughly after cleaning the filter.



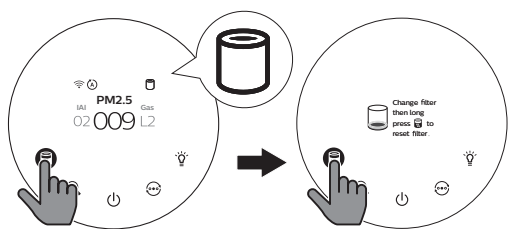
Replacing the filter

Understanding the healthy protection lock

This air disinfectant is equipped with a filter replacement indicator to make sure that the filter is in optimal condition when the air disinfectant is operating. When the filter need to be replaced, the filter replacement alert  lights up red.


If the filter is not replaced in time, the air disinfectant will stop operating and automatically lock to protect the air quality in the room. Replace the filter as soon as possible.

Replacing the filter

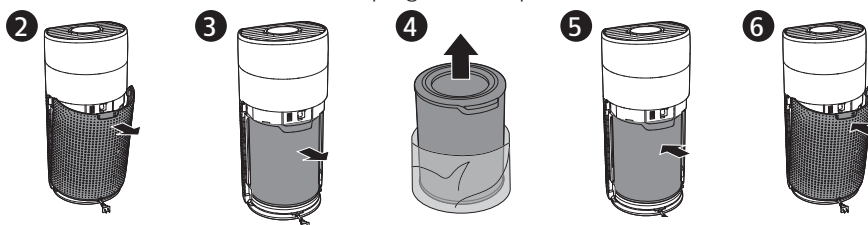


Note:

- The filter is not washable or reusable.
- Always turn off the air disinfectant and unplug from the electrical outlet before replacing the filter.

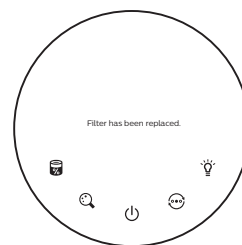
Filter alert light status	Action
The filter replacement alert  lights up	Replace the NanoProtect filter Pro S3 (FY4150/01)

- 1 Switch off the air disinfecter and unplug from the power socket.



- 2 Pull the back cover and remove it from the appliance.
- 3 Pull the filter from the appliance.
- 4 Remove all packaging materials of the new filter.
- 5 Put the new filter into the appliance.
- 6 Reattach the back cover.
- 7 Put the plug of the air disinfecter in the power socket.
- 8 Touch the button to switch on the appliance.
- 9 Touch and hold the filter status check/reset button for 3 seconds to reset the filter lifetime counter.
- 10 Wash your hands thoroughly after replacing the filter.

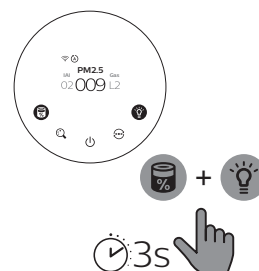
Note: Do not smell the filter as it has collected pollutants from the air.



Filter reset

You can replace the filter even before filter replacement alert () displays on the screen. After replacing a filter, you need to reset the filter lifetime counter manually.

- 1 Touch the power button for 3 seconds to turn off the appliance and unplug from power socket.
- 2 Put the power plug in the power socket.
- 3 Within 15 seconds after power on, touch and hold and button for 3 seconds to reset the filter lifetime counter.




6 Storage

- 1 Turn off the air disinfectant and unplug from the power socket.
- 2 Clean the air disinfectant, particle sensor and the surface of the filter (see chapter “Cleaning and maintenance”).
- 3 Let all parts air dry thoroughly before storing.
- 4 Wrap the filter in air tight plastic bags.
- 5 Store the air disinfectant, filter in a cool, dry location.
- 6 Always thoroughly wash hands after handling the filter.

7 Troubleshooting

This chapter summarizes the most common problems you could encounter with the appliance. If you are unable to solve the problem with the information below, contact the Consumer Care Center in your country.

Problem	Possible solution
The appliance does not work even though it is plugged in.	<ul style="list-style-type: none">• Check if the back cover is properly installed.• The filter replacement alert has been on continuously but you have not replaced the corresponding filter. As a result, the appliance is now locked. In this case, replace the filter and long press  to reset the filter lifetime counter.
The airflow that comes out of the air outlet is significantly weaker than before.	<ul style="list-style-type: none">• The surface of the filter is dirty. Clean the surface of the filter (see the chapter “Cleaning and maintenance”).
The air quality does not improve, even though the appliance has been operating for a long time.	<ul style="list-style-type: none">• Check if the packing material is removed from the filter.• The filter has not been placed in the appliance. Make sure that the filter (FY4150/01) is properly installed.• The particle sensor is wet. The humidity level in your room is high and causes condensation. Make sure that the particle sensor is clean and dry (see the chapter “Cleaning and maintenance”).• Room size is large or the outdoor air quality is poor. For optimum purification performance, please close the doors and windows when operating the air disinfectant.• There are indoor pollution resources. For instances, smoking, cooking, incense, perfume or alcohol.• Filter reaches the end of life. Replace the filter with a new one.

Problem	Possible solution
The color of the air quality light always stays the same.	<ul style="list-style-type: none"> The particle sensor is dirty. Clean the particle sensor (see the chapter "Cleaning and maintenance").
The appliance produces a strange smell.	<ul style="list-style-type: none"> The first few times you use the appliance, it may produce a plastic smell. This is normal. However, if the appliance produces a burnt smell even if removing filter, contact your Philips dealer or an authorized Philips service center. The filter may produce smell after being used for a while because of the absorption of indoor gases. It's recommended that you reactivate the filter by putting it in direct sunlight for repeated use. If odor still exists, replace the filter.
The appliance is extra loud.	<ul style="list-style-type: none"> It's normal if the appliance runs at the Turbo mode. In the Auto mode, if the appliance is too loud, maybe the appliance runs at high speed automatically because air quality becomes worse. You can choose the Sleep mode with lower noise. If anything drops into air outlet, it may also cause abnormal loud sound. Immediate turn off appliance, turn appliance upside down, to get foreign objectives out of appliance. If there is abnormal sound, contact the Consumer Care Center in your country.
The screen displays that the back cover is opened.	<ul style="list-style-type: none"> Shut off the power first, then install the back cover correctly. Connect the appliance with power and retry.
Error code "E1" displays on the screen.	<ul style="list-style-type: none"> The motor has malfunctions. Contact the Consumer Care Center in your country.

Problem	Possible solution
The Wi-Fi setup is not successful.	<ul style="list-style-type: none"> • If the router your air disinfectant is connected to is dual – band and currently it is not connecting to a 2.4GHz network, please switch to another band of the same router (2.4GHz) and try to pair your air disinfectant again. 5GHz networks are not supported. • Web authentication networks are not supported. • Check if the air disinfectant is within range of the Wi-Fi router. You can try to locate the air disinfectant closer to the Wi-Fi router. • Check if the network name is correct. The network name is case-sensitive. • Check if the Wi-Fi password is correct. The password is case-sensitive. • Retry the setup with the instructions in section “Wi-Fi connection”. • The Wi-Fi connectivity can be interrupted by electromagnetic or other interferences. Keep the appliance away from other electronic devices that may cause interferences. • Check if the mobile device is in airplane mode. Make sure to have the airplane mode deactivated when connecting to the Wi-Fi network. • Consult the help section in the App for extensive and up-to-date troubleshooting tips.

8 Guarantee and service

If you need information or if you have a problem, please visit the Philips website at www.philips.com or contact the Philips Consumer Care Center in your country (you can find its phone number in the worldwide guarantee leaflet). If there is no Consumer Care Center in your country, go to your local Philips dealer.

Order parts or accessories

If you have to replace a part or want to purchase an additional part, go to your Philips dealer or visit www.philips.com/support.

If you have problems obtaining the parts, please contact the Philips Consumer Care Center in your country (you can find its phone number in the worldwide guarantee leaflet).

PHILIPS

产品保用卡

保修及服务：

此产品是一件设计精良，用高品质元件制造之家用电器，在正常使用及保养下应能发挥其优越性能。在购买日期后二年内，若发生任何因制造工艺或元器件造成之损坏，飞利浦中国维修服务中心将为持证用户提供免费门市维修服务，视情况更换零件或整个产品。无论在保期中或保期后，只要飞利浦正式行销该产品的任何国家皆可获得维修服务。若飞利浦在当地无行销该项产品，飞利浦同样提供维修服务，但可能因未储备所需零件，维修时间可能较长，敬请见谅。请联络当地飞利浦经销商，或飞利浦服务部门。若您需洽询相关资讯，或遇困难事项时，请联络当地飞利浦维修服务中心，或向飞利浦服务热线咨询。

中国顾客服务热线：

4008 800 008（用户需承担本地通话费）。

网址：www.philips.com.cn

网上会员注册与产品注册：

- 1 登陆 www.philips.com.cn/welcome
- 2 点击“创建新账户”，创建您的飞利浦账号
- 3 点击“注册产品”，通过产品名称或产品型号查找产品，完成产品注册

保修条例：

- 在购买日期后二年内，凡经本公司特约维修站人员确认为正常使用情况下，因制造工艺或元器件造成之损坏，您都将获得免费保修服务。
- 此免费服务不包括需时常更换的易耗零配件（吸尘机纸袋，布袋，空气清新机滤网，滤芯，活性炭，咖啡壶过滤网）及附件（如须刀网膜、刀头，咖啡杯，食品加工机杯/刀具等），辅助装置，运输费及维修人员上门服务费。
- 用户请保留此联。
- 此证若经涂改即作废。

- 此证须联同发票正本使用方为有效。
- 以下情况将不能获得免费服务。
 - 1 使用不当引起的人为损坏，例如接入不适当电源、使用不适当配件、不适当之安装、不依说明书使用、错误使用或疏忽而造成损坏等。因运输及其他意外而造成之损坏。非经本公司认可之维修和改装。其他因不可抗力（如自然灾害、电压异常等）造成的损坏。
 - 2 一般家庭以外使用（如工业、商业用）而造成的损坏。
 - 3 正常使用引起的产品老化、磨损等，但不影响产品的正常使用。
- 保修证作为在规定期限及条件之内进行免费维修的保证，并不限制消费者的法定权利。
- 飞利浦提供2年全球联保服务，在产品由飞利浦正式销售的所有国家中，都提供保修和保修期满的维修服务。要求保修时，您需提供发票正本，且请求保修的日期还在保修期限之内。

服务须知

需要此产品的售后服务，拨打服务热线：4008 800 008
在维修服务过程中有任何意见，欢迎致函飞利浦（中国）投资有限公司解决疑难。

飞利浦（中国）投资有限公司
上海市静安区灵石路718号A1幢

产品中有害物质的名称及含量

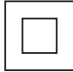
部件名称 (parts name)	有毒有害物质或元素					
	铅(Pb)	汞(Hg)	镉(Cd)	六价铬 (Cr6+)	多溴联苯 (PBB)	多溴二苯醚 (PBDE)
主电路板组件	○	○	○	○	○	○
电源电路板组件	○	○	○	○	○	○
传感器板组件	○	○	○	○	○	○
电机组件	○	○	○	○	○	○
电源插头	×	○	○	○	○	○
<p>本表格依据SJ/T 11364的规定编制。</p> <p>○ 表示该有害物质在该部件所有均质材料中的含量均在GB/T 26572规定的限量要求以下。</p> <p>× 表示该有害物质至少在该部件的某一均质材料中的含量超出GB/T 26572规定的限量要求。</p>						

*该表格中所显示的“有害物质”在产品正常使用情况下不会对人身和环境产生任何伤害。

*该表格中所显示的“有害物质”及其存在的部件向消费者和回收处理从业者提供相关物质的存在信息，有助于产品废弃时的妥善处理。

保留备用

出版日期：2020-08-07

产品:	PHILIPS®KJ550F-D21空气消毒机	
型号:	KJ550F-D21	
额定电压:	220V ~	
额定频率:	50Hz	
额定输入功率:	62W	
产地:	中国浙江宁波	
产品责任单位:	飞利浦（中国）投资有限公司	
地址:	上海市静安区灵石路718号A1幢	
联系电话:	4008 800 008	
全国顾客服务热线:	4008 800 008	
邮政编码:	200072	
产品实际生产企业:	宁波天瑞电器有限公司	
生产地址:	浙江省余姚市泗门镇工业园区共济路1号	
联系电话:	0574-62132799	
邮政编码:	315470	
生产企业卫生许可证号:	浙卫消证字（2020）第0146号	
生产日期:	请见产品本体	
注意事项:	详见使用说明书	
执行标准:	GB4706.1-2005, GB4706.45-2008, 信部无【2002】353号,《消毒技术规范》(卫生部 2002年版), Q/PSH 002-2020	
主要杀菌因子及其强度:	过滤, 对自然菌的杀菌效率≥90%, 白葡萄球菌的杀菌 效率≥99.9% (消毒机运行1h)	
杀菌原理:	过滤	
杀灭微生物类别:	空气自然菌	
使用范围和使用方法:	详见使用说明书	
使用寿命（及主要元器件寿命）: 整机的寿命是5年, 而滤网（主要元器件）在 开始使用后的寿命是1年。但具体更换时间取决于不同使用环境的颗粒污染物浓 度, 详见使用说明书。		

能源效率标识见机身能效标识。





© 2020 Koninklijke Philips N.V.

保留所有权利

3000 057 03301

