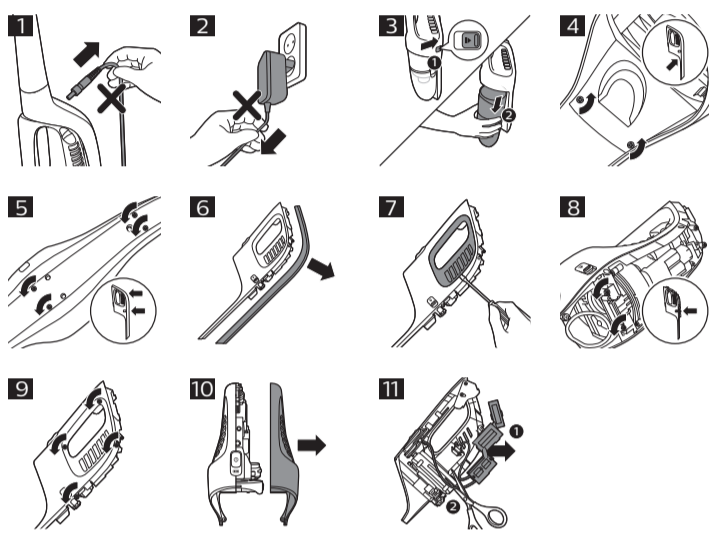




© 2019 Koninklijke Philips N.V.
All rights reserved
保留所有权利
4222.003.4349.3 (25/10/2019)
> 75% 循环再造纸
保留备用



>75 % recycled paper
>75 % papier recyclé

English

Important safety information

Read this important information carefully before you use the appliance and its accessories and save it for future reference. The accessories supplied may vary for different products.

Danger

- Never vacuum up water or any other liquid. Never vacuum up flammable substances and do not vacuum up ashes until they are cold.
- Never immerse the appliance or the adapter in water or any other liquid, nor rinse it under the tap.

Warning

- Check if the voltage indicated on the adapter corresponds to the local mains voltage before you connect the appliance.
- Always check the appliance and adapter before use. Do not use the appliance or the adapter if it is damaged. Always replace a damaged part with one of the original type.
- Do not use the appliance or the adapter if it is damaged.
- If the adapter is damaged, always have it replaced with one of the original type in order to avoid a hazard.
- Do not open the appliance to replace the rechargeable battery.
- The adapter contains a transformer. Do not cut off the adapter to replace it with another plug, as this causes a hazardous situation.
- To prevent damage, never put ethereal oils or similar substances in the water tank or let the appliance pick them up.
- Do not lift or tilt the nozzle when the water tank is assembled and full, as water may spray out of the water tank.
- This appliance is not intended for use by persons (including children) with reduced physical, sensory or mental capabilities, or lack of experience and knowledge, unless they have been given supervision or instruction concerning use of the appliance by a person responsible for their safety.
- Children should be supervised to ensure that they do not play with the appliance.
- Keep the appliance and its cord out of the reach of children.
- The plug must be removed from the socket-outlet before cleaning or maintaining the appliance.

Caution

- Only charge the appliance with the adapter supplied. During charging, the adapter feels warm to the touch. This is normal.
- Do not plug in, unplug or operate the appliance with wet hands.
- Do not unplug the appliance by pulling at the cord. Always unplug by pulling the small plug (Fig. 1) out of the appliance and the adapter out of the wall socket (Fig. 2).
- Always switch off the appliance after use and when you charge it.
- Never block the exhaust air openings during vacuuming.
- Always use the vacuum cleaner with the filter unit assembled.
- Make sure that the appliance is installed with the wall fixture mounted to the wall according to the instructions in the user manual.
- Be careful when you drill holes in the wall to attach the wall fixture, to avoid the risk of electric shock.
- Maximum noise level: Lc = 85 dB(A)

Electromagnetic fields (EMF)

This Philips appliance complies with all applicable standards and regulations regarding exposure to electromagnetic fields.

Ordering accessories

To buy accessories or spare parts, visit www.philips.com/parts-and-accessories or go to your Philips dealer. You can also contact the Philips Consumer Care Center in your country (see the international warranty leaflet for contact details).

Warranty and support

If you need information or support, please visit www.philips.com/support or read the international warranty leaflet.

Recycling

- Do not throw away the product with the normal household waste at the end of its life, but hand it in at an official collection point for recycling. By doing this, you help to preserve the environment.
- This product contains a built-in rechargeable battery which shall not be disposed of with normal household waste. Please take your product to an official collection point or a Philips service center to have a professional remove the rechargeable battery.
- Follow your country's rules for the separate collection of electrical and electronic products and rechargeable batteries. Correct disposal helps prevent negative consequences for the environment and human health.

Removing the rechargeable battery

Only remove the rechargeable battery when you discard the product. Before you remove the battery, make sure that the product is disconnected from the wall socket and that the battery is completely empty.

Take any necessary safety precautions when you handle tools to open the product and when you dispose of the rechargeable battery.

- To remove the rechargeable battery, follow the instructions below.
- 1 Let the appliance run until it stops.
 - 2 Remove the dust container and the cyclone from the handheld vacuum cleaner (Fig. 3).
 - 3 Undo two screws on the inside of the handheld vacuum cleaner (Fig. 4).
 - 4 Turn the handheld vacuum cleaner and remove four screws on the other side (Fig. 5).
 - 5 Remove the back panel from the handheld vacuum cleaner (Fig. 6).
 - 6 Insert a screwdriver and push it down to remove the panel on the left side of the appliance (Fig. 7).
 - 7 Remove two screws from the bottom (Fig. 8).
 - 8 Remove four screws on the left side of the appliance (Fig. 9).
 - 9 Remove the left housing part (Fig. 10).
 - 10 Take out the rechargeable battery and cut the wires connected to it one by one (Fig. 11).

Troubleshooting

This chapter summarizes the most common problems you could encounter with the appliance. If you are unable to solve the problem with the information below, visit www.philips.com/support for a list of frequently asked questions or contact the Consumer Care Center in your country.

Problem	Possible cause	Solution
The appliance does not work when I push the button.	The battery light flashes fast because the batteries are low.	To charge the batteries, insert the small plug into the socket on the appliance and insert the adapter into a wall socket.
	You cannot use the appliance because the appliance is still charging.	You have to remove the small plug from the socket on the appliance before you can switch on the appliance.
	You have to press two buttons.	First press the on/off button to switch on the appliance. Then press the MAX button to get maximum suction power.
The appliance has a lower suction power than usual.	The filter and the cyclone are dirty.	Clean the filter and the cyclone.
	You have not connected the dust bucket, the dust separator and the cyclone properly. Incorrect assembly of these parts causes air leakage, which leads to loss of suction power.	Connect the dust bucket, the dust separator and the cyclone properly.
Dust escapes from the appliance.	The filter is dirty.	Clean the filter.
The brush does not turn anymore.	The brush encounters too much resistance.	Clean the brush with a pair of scissors or by hand. If you clean the roller brush by hand, pull the hairs or threads from the widest side to the narrowest side of the roller brush (see user manual).
	You switched on the appliance by pressing the on button on the handheld vacuum cleaner.	Switch off the appliance by pressing the on button on the handheld vacuum cleaner again. Then switch it on again by pressing the on button on the stick.

简体中文

重要安全信息

使用本产品及其附件之前，请仔细阅读本重要信息，并妥善保管以供日后参考。 随附的附件可能因产品而异。

危险

- 切勿吸入水或其他任何液体。 切勿吸入易燃物质，也不要吸入未冷却的灰烬。
- 切勿将本产品或适配器浸入水或其他任何液体中，也不要将它们放在水龙头下冲洗。

警告

- 在将本产品连接电源前，务必检查当地的电压是否与电源适配器所标电压一致。
- 使用前，请务必检查产品和适配器。 如果产品或适配器受损，请停止使用。 请务必用原装型号更换损坏的部件。
- 如果产品或适配器受损，请停止使用。
- 如果适配器已损坏，则务必更换原装型号适配器，以免发生危险。
- 切勿拆开本产品更换充电电池。
- 适配器中包含一个变压器。 请勿剪下适配器更换其他插头，否则将导致严重后果。
- 为防止受损，切勿将香精油或类似物质放入水箱中，也不要用品清扫它们。
- 组装水箱及水箱已满时，请勿提起或倾斜吸嘴，否则水可能会从水箱中喷出。
- 产品不建议由有肢体、感官或精神能力缺陷或缺少使用经验和知识的人（包括儿童）使用，除非有负责他们安全的人对他们进行与产品使用有关的监督或指导。
- 请照看好儿童，本产品不能用于玩耍。
- 将产品及其线缆放在儿童接触不到的地方。
- 清洁或维护产品之前，必须先从插座拔掉插头。

注意

- 只能用随附的适配器为本产品充电。 充电期间，适配器会有微热。 这是正常的。
- 切勿用湿手插入、拔下或操作本产品。
- 切勿通过拉动线缆拔下产品插头。 要拔下电源插头，请务必将充电插头 (图 1) 拔出本产品，并将适配器拔出电源插座 (图 2)
- 使用后和充电时，请务必关闭产品。
- 吸尘时切勿阻塞排气口。
- 使用吸尘器时，请确保装上过滤部件。
- 请确保按照用户手册中的说明，用壁装装置将产品安装到墙上。
- 请注意，在墙上钻孔安装壁装装置时，请避免触电风险。
- 最大噪音强度： Lc = 85 dB(A)

电磁场 (EMF)

本 Philips 产品符合所有有关暴露于电磁场的适用标准和法规。

订购配件

如需购买附件或备件，请访问 www.philips.com/parts-and-accessories 或联系您的飞利浦经销商。 您还可以联系所在国家/地区的飞利浦客户服务中心（请参阅保修卡了解详细联系信息）。

保修和支持

如需信息或支持，请访问 www.philips.com/support 或阅读保修卡。

回收

- 弃置本产品时，请不要将其与一般生活垃圾放在一起，应将其交给政府指定的回收中心。 这样做将有利于环保。
- 此产品包含内置充电电池；请勿将充电电池与一般生活垃圾一起弃置。 请您将产品送到官方收集中心或飞利浦服务中心，请专业人士移除充电电池。
- 遵循您的国家/地区有关分类回收电子电气产品和充电电池的规定。 正确弃置产品有助于避免对环境和人类健康造成不良后果。

拆下充电电池

必须在丢弃本产品前拆下充电电池。 卸下电池之前，请确保本产品与电源断开连接并且电池电量已耗尽。

当您使用工具打开本产品时以及在您弃置充电电池时，请采取必要的安全保护措施。

- 按照以下步骤拆下充电电池。
- 1 让产品运转，直到停止为止。
 - 2 从手持式吸尘器 (图 3)上卸下集尘桶和旋风滤网。
 - 3 拧下手持式吸尘器 (图 4)内侧的 2 颗螺丝。
 - 4 将手持式吸尘器翻过来，并卸下另一侧 (图 5)上的 4 颗螺丝。
 - 5 卸下手持式吸尘器 (图 6)的后面板。
 - 6 插入螺丝刀并将其向下推以取下产品 (图 7)左侧的面板。
 - 7 从底部 (图 8)卸下 2 个螺丝。
 - 8 取下产品 (图 9)左侧的 4 颗螺丝。
 - 9 取下外壳 (图 10)的左半边部分。
 - 10取出充电电池，并逐一 (图 11)切断连接充电电池的电线。

产品中有害物质的名称及含量						
部件名称	有害物质					
	铅 (Pb)	汞 (Hg)	镉 (Cd)	六价铬 (Cr (VI))	多溴联苯 (PBB)	多溴二苯醚 (PBDE)
充电式吸尘器	X	O	O	O	O	O
电源适配器	X	O	O	O	O	O

- 本表格依据 SJ/T 11364 的规定编制。
- O: 表示该有害物质在该部件所有均质材料中的含量均在 GB/T 26572 规定的限量要求以下。
- X: 表示该有害物质至少在该部件的某一均质材料中的含量超出 GB/T 26572 规定的限量要求。
- 该表格中所显示的“有害物质”在产品正常使用情况下不会对人身和环境产生任何伤害。
 - 该表格中所显示的“有害物质”及其存在的部件向消费者和回收处理从业者提供相关物质的存在信息，有助于产品废弃时的妥善处理。

故障种类和处理方法

本章归纳了使用本产品时最常见的一些问题。如果您无法根据以下信息解决问题，请访问 www.philips.com/support 查阅常见问题列表，或联系您所在国家/地区的客户服务中心。

问题	可能的原因	解决方法
按下按钮时，产品不工作。	由于电池电量低，电池指示灯快速闪烁。	要为电池充电，请将小插头插入产品的电源插孔，然后将适配器插入插座。
	您不能使用正在充电的产品。	您必须将小插头从产品的电源插孔拔出，然后才能开启产品。
	您必须按两个按钮。	首先按开/关按钮开启产品。然后按 MAX（最大）按钮获得最大吸力。
本产品的吸力比往常要小。	过滤网和旋风滤网不干净。	清洁过滤网和旋风滤网。
	您没有正确连接集尘桶、灰尘分离器 and 旋风滤网。这些部件安装不正确会导致空气泄露，致使吸力损失。	正确连接集尘桶、灰尘分离器 and 旋风滤网。
灰尘从产品中溢出。	过滤网变脏。	清洁过滤网。
滚刷不再旋转。	滚刷遇到的阻力太大。	用剪刀或用手清洁滚刷。如果用手清洁滚刷，请将毛发或线头从滚刷的最宽侧拉动到最窄侧（请参见用户手册）。
	通过手持式吸尘器的开关按钮来开启产品。	再次按下手持式吸尘器的开关按钮来关闭产品。然后通过把杆上的开关按钮来再次启动产品。

<div><div>PHILIPS</div><div>产品：飞利浦立式/手持二合一充电式吸尘器 型号：FC6171 额定电压：220V~ 额定频率：50Hz 额定输入电流：0.6A 生产日期：请见产品本体 产地：中国广东东莞</div><div>飞利浦（中国）投资有限公司 上海市静安区灵石路718号A1幢 全国顾客服务热线：4008 800 008</div><div>本产品根据国标 GB4706.1-2005, GB4706.7-2014, GB4343.1-2018及 GB17625.1-2012制造</div></div>	<div><div>PHILIPS</div><div>产品：飞利浦立式/手持二合一充电式吸尘器 型号：FC6168 额定电压：220V~ 额定频率：50Hz 额定输入电流：0.6A 生产日期：请见产品本体 产地：中国广东东莞</div><div>飞利浦（中国）投资有限公司 上海市静安区灵石路718号A1幢 全国顾客服务热线：4008 800 008</div><div>本产品根据国标 GB4706.1-2005, GB4706.7-2014, GB4343.1-2018及 GB17625.1-2012制造</div></div>
<div><div>PHILIPS</div><div>产品：飞利浦立式/手持二合一充电式吸尘器 型号：FC6162 额定电压：220V~ 额定频率：50Hz 额定输入电流：0.2A 生产日期：请见产品本体 产地：中国广东东莞</div><div>飞利浦（中国）投资有限公司 上海市静安区灵石路718号A1幢 全国顾客服务热线：4008 800 008</div><div>本产品根据国标 GB4706.1-2005, GB4706.7-2014, GB4343.1-2018及 GB17625.1-2012制造</div></div>	

保留备用

发行日期: 25/10/2019