

4.0 Important instructions

We recommend that you read the following instructions carefully, before using the appliance.

1. Check if the voltage indicated on the base of the appliance, corresponds to the local electrical mains voltage before you connect the appliance.

2. Do not use the appliance when the mains cord, the plug or other components are damaged. Only the company or a service centre authorized by Philips must replace it.

3. Always unplug the appliance after use.

4. Never immerse the base unit in water or any other liquid. Do not rinse it either.

5. Always unplug the appliance before reaching in to the jar with your fingers or an object e.g. spatula.

6. The appliance is not intended for use by persons (including children) with reduced physical, sensory or mental capabilities or lack of experience and knowledge, unless they have been given supervision or instruction concerning use of the appliance by a person responsible for their safety. Children should be supervised to ensure that they do not play with the appliance.
7. Always ensure that speed selector knob is at 'O' position before fixing accessories.

8. Do not operate the mixer without the dome or lid in place or with an empty jar.

9. Handle the blades carefully. Wash them under running water and do not rub by hand.

10. Do not use mixer on wet surface.

11. Do not run mixer for more than 30 minutes on rated time continuously.

12. Keep mixer away from hot gas burner, electric hot plate or similar appliances.

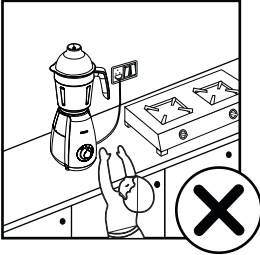
13. This appliance is strictly for household use.

14. Do not drop base unit or jar.

15. Never use accessories or parts not recommended by Philips or those made by other manufacturers else the warranty will become invalid.

16. Do not use the jars as storage containers.

17. Do not leave unit unattended while in operation.

18. Ensure that the filter is fitted properly before running the Blender Jar unit.
- 

7.0 Cleaning and Maintenance

1. Remove main plug from wall socket. Do not immerse unit in water.

2. Wipe base unit with a damp cloth and non-abrasive liquid cleaner.

3. Disassemble other parts after use. Wash them in soapy water, rinse with clean water and dry thoroughly. Do not wash in a dishwasher. Cleaning is easiest done immediately after use.

4. Take soapy water in jars, fix jar on motor, run for 10 seconds on 'I' speed and then wash the jar.

5. Store mixer grinder standing on its heel in a safe and dry place.

9.0 Maximum Jar Capacity

No.	Type of Jar	Capacity	Wet capacity (rated) max.	Dry capacity (rated) max.	Liquidise (rated) max.
1	Wet grinding jar	1.75L	0.7L	0.9L	NA
2	Blender/Pulp extractor jar	1.5L	NA	NA	0.7L
3	Dry grinding jar	1.0L	0.4L	0.5L	NA
4	Chutney grinding jar	0.5L	NA	0.3L	NA

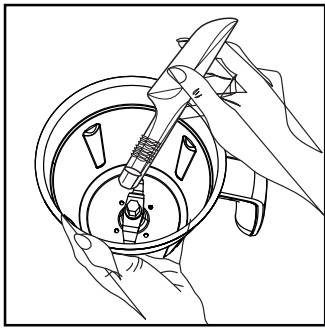
8.0 Overload Protection

Mixer is fitted with an automatic power shut off mechanism to avoid motor burning due to overloading. If mixer stops due to overloading, the red knob at the bottom will come out. Switch off the mixer. Remove excess load from jar. Wait for 2-3 minutes. Press red knob and start mixer again.

5.0 Using the product

1. How to fit the removable blades

Hold the coupler on the underside of the jar and with the spanner; tighten by rotating in anti-clockwise direction till the blade is securely locked. This procedure is applicable for Wet Jar, Dry Jar & Blender/ Pulp extractor jar.



2. How to fit jar to base unit

After fitting the blades carefully insert the jar on top of the base unit. Ensure that lock of the jar fits the slot of the base unit. Rotate the jar clockwise until it locks.

3. How to assemble the pulp extractor jar

After fitting the blades or filter carefully insert the jar on top of the base unit. Ensure that lock of the jar fits the slots of the base unit. Rotate the jar clockwise until it locks.

6.0 Operation

1. Before the first use

Thoroughly clean parts that come in contact with food.

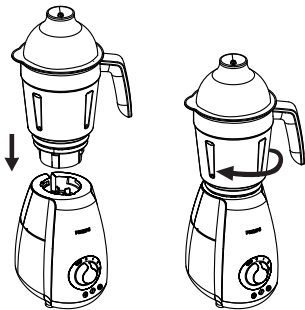
2. Preparation for use

Cool the hot ingredients before putting in jar.

Cut large ingredients into small pieces of approx 2cm before processing.

Check speed selector is at 'O' Connect mains plug to wall socket after fixing jar. Switch on main supply. Turn speed selector to required position and speed. After operation, turn selector knob to 'O' and check. Repeat till desired results are obtained.

For blending/liquidizing/ pureeing use 'WHIP' on speed knob. This will activate the whipping till you release the button.



10.0 Standard Recipes

No.	Recipe	Quantity	Time
1	Urad daal	200g+450ml water soaked for 6-8 hrs. Add 50ml water	1.5 min
2	Garam masala	150g of assorted spices roasted and cooled	2.0 min
3	Wet masala	150g onion + 100g tomato	1.0 min
4	Ginger garlic paste	50g ginger + 50g garlic	1.5 min
5	Milk shake	300ml milk + 50g ice-cream (optional) + 30g Strawberry crush (sugar as per taste)	1.0 min
6	Tomato Puree	250g medium sized tomatoes cut in 4's	1.0 min
7	Lassi	250g curd + salt / sugar (as per taste) + crushed ice	30 sec

For Wet/Dry/Chutney grinding/Liquidizing, blending & Pureeing use speed 'I' & speed 'II' for 10-15 seconds, thereafter use speed 'III' till you finish grinding. Remove the plug from the socket after use.

Blender Jar:

5 easy steps of extracting pulp



Open the Jar and remove inner lid. Cut ingredients in small pieces and put inside the filter of the pulp extractor Jar



Place the inner Lid and pour required quality of water



Close the Jar lid



look jar on base unit and connect plug to socket to start the appliance.



Pour and serve