

Register your product and get support at  
[www.philips.com/welcome](http://www.philips.com/welcome)

HD3026  
HD3029



User Manual

用戶手冊

**PHILIPS**



HD3026, HD3029

English

5

繁體中文

21



# Contents

1	Important information	6	7	Function operation	12
	Operation instructions	6		Cooking	12
	Do not do the following	6		Cooking congee	13
	Handle with care	6		Steaming	14
	Environment	7			
	Warranty and after-sales service guarantee	7			
2	Introduction	7	8	Maintenance	16
				Cleaning the steam valve	16
				Cleaning the cover (seal)	17
				Cleaning the inner pot	17
				Cleaning the sensor and heating plate	18
				Cleaning the accessories	18
3	Product overview	8	9	Circuit diagram	19
	Accessories	8			
4	Control panel	9	10	Troubleshooting	20
5	Model specifications	9			
6	Using the product	10			
	Using for the first time	10			
	Preparation before use	10			

# 1 Important information

Please read this manual carefully before using the product and keep it for future reference.

In order to ensure safe use, this manual refers to a variety of methods. Misuse or non-compliance with safety warnings could lead to accidents.

## ! Operation instructions

- This product is for indoor use only.
- Insert the plug into the rice cooker's socket. Before turning on the power, make sure that the voltage marked on the cooker and the power supply voltage are the same.
- Only connect the appliance to an earthed wall socket. Always make sure the plug is inserted firmly into the socket.
- If the household power cord is damaged, it must be replaced by Philips, a service center authorized by Philips or similarly qualified persons, in order to avoid any potential hazard.
- Make sure the rice cooker is out of children's reach to prevent it from being tipped over accidentally, which could cause burns. Be careful not to accidentally press a key while cooking, as this could cause the rice cooker to stop.
- This appliance is not intended for use by persons (including children) with physical, sensory or mental impairments, or lack of experience and knowledge, unless they have been given supervision or instruction in the use of the appliance by a person responsible for their safety. Ensure that children do not play with this product.
- Keep the rice cooker on a level and stable surface. Do not use in a humid or hot environment, or near any other sources of heat.
- Before connecting the plug to the power outlet, make sure the heating elements, temperature sensors and the surface of the inner pot are all clean, dry and free of any rice, cooking residue or dirt that may affect the cooking.
- When removing the inner pot, make sure that you disconnect the plug first.
- The rice cooker is intended to be used in household or similar applications such as: Staff kitchen areas in shops, offices, and other residential type environments; Farm houses; By clients in hotels, motels and other residential type environments; Bed and breakfast type environments.

## ⊘ Do not do the following

- Do not use wet hands to connect the power plug or to press any buttons on the control panel.
- Do not attempt to modify, take apart or repair this rice cooker.
- Never connect this appliance to an external timer switch as this may be hazardous.
- Do not immerse the electric rice cooker in water when cleaning.
- Do not heat the inner pot directly over a naked flame.
- Do not expose this product to high temperatures, or place the rice cooker on a hot stove or cooker.
- Do not lift or move the rice cooker while cooking.
- Do not use a misshapen inner pot in the rice cooker.
- Do not use any attachments or components made by other manufacturers, unless they are specifically recommended by Philips. If you use such accessories or components, the manufacturers will not be responsible for any adverse consequences.

## ⚠ Handle with care

- Before connecting the plug to the power outlet and turning on the switch, check that the inner pot has been placed inside the cooker.
- Be careful of heat from steam escaping during cooking or when opening the lid. Hands and face must be kept away from the rice cooker to avoid burns from steam.
- Do not cover the lid with a cloth. This may cause the lid to become distorted or discoloured.
- To prevent the water from overflowing, which could be dangerous, do not exceed the maximum water level indicated on the inner pot.
- To avoid scratching the coating inside the inner pot, it is recommended not to cook ingredients such as prawns, crabs and shellfish. If cooking, remove the hard shell beforehand.
- Do not place this product near magnetic materials while in use.

## Environment



Do not dispose of the appliance with normal household waste, but hand it in at a government-appointed collection point for recycling. By doing this, you help to preserve the environment.

## Warranty and after-sales service guarantee

If you need service or information, or if you have any questions, please visit the Philips website at [www.philips.com](http://www.philips.com). You can also contact your local Philips Customer Care Centre ( you can find the phone number on your warranty card ). If your country or region does not have a Philips Customer Care Centre, contact your local Philips dealer for help.

## 2 Introduction

The Philips rice cooker is an intelligent cooker developed using the company's innovative technology, adopting a novel, user-friendly control panel design and an advanced structure. It is an ideal cooking tool for the modern household.

## Advanced technology Innovative concepts

1

Use 6F technology: Spill-proof, scorch-proof, non-stick, durable, leak-proof, cockroach-proof, comprehensive, cutting-edge technology.

2

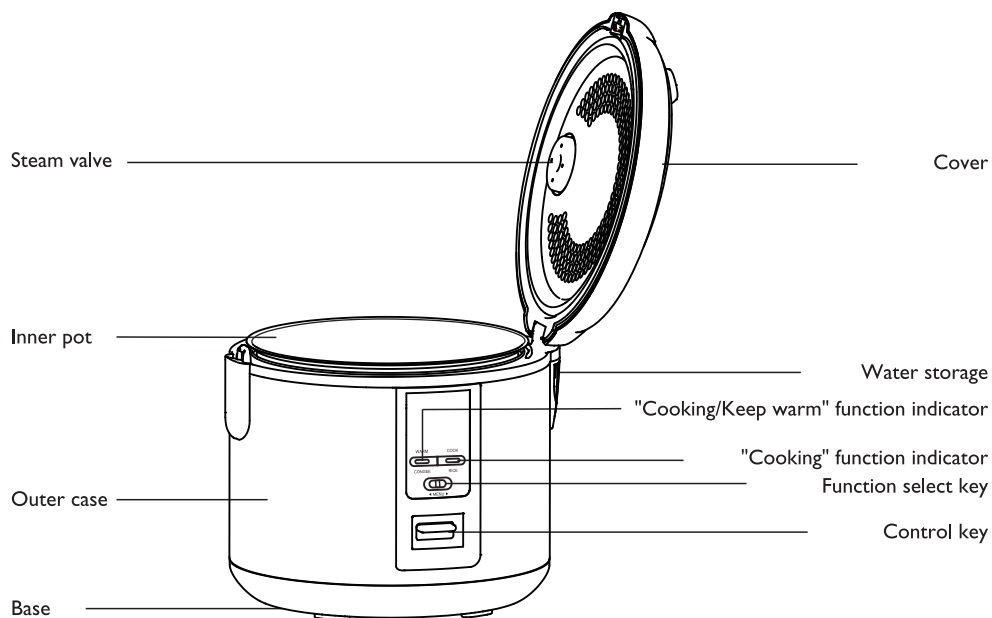
Innovative design concepts

Great tastes: Micro-pressure cooking, appropriate temperature control, scientific cooking, authentic tasting results.

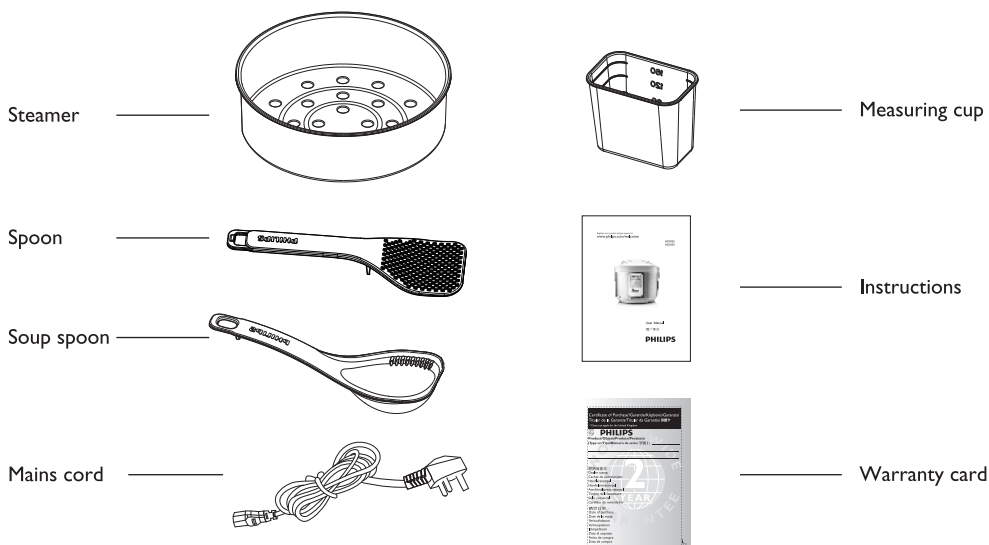
Health: Gold lined, boiling at high temperatures, healthy for the environment and for your family.

Notes: All content in this manual has been carefully checked and, if this content contains any printing errors, omissions or misunderstandings, the company holds the right to final interpretation.  
The design and specifications are subject to change, please refer to the actual merchandise purchased.

### 3 Product overview

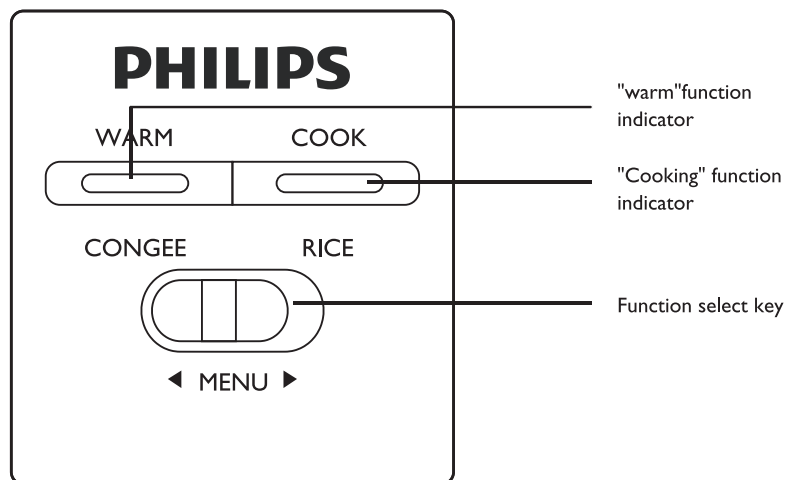


### Accessories





## 4 Control panel



## 5 Model specifications

Model Number	HD3026	HD3029
Rated power supply	220V~ 50Hz	
Rated power output	650 W	650 W
Rated capacity	4.0 L	5.0 L
Rice volume (cups)	1.5L (1-8)	1.8L (1-10)
Length x width x height (mm)	269 x 269 x 233	269 x 269 x 253
Weight (kg)	2.8	3.0

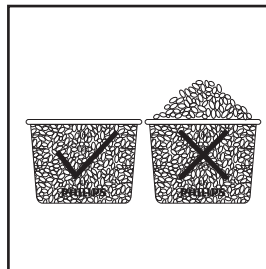
## 6 Using the product

### Using for the first time

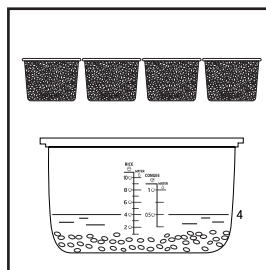
- (1) Remove all accessories from within the pot.
- (2) Clean the body with a soft cloth.
- (3) Use the "Cooking" function to remove any unusual smells from the inner pot and inner lid.
  - Pour water into the inner pot until it is half full, attach the lid and connect to the power supply.
  - Press the control key, the "Cooking" function indicator lights up.
  - When the water is boiling, you need to manually raise the control lever, at which point the "Warm" function light will turn on.
  - Disconnect the plug from the power supply. Once the pot has cooled, wash in water.
- (4) Clean all attachments with a sponge and washing-up liquid. Rinse with clean water and dry with a soft cloth.

### Preparation before use

- (1) Use cups for measuring rice as indicated in the diagram. Use clean water. Wash the rice until the water running through it is relatively clear.



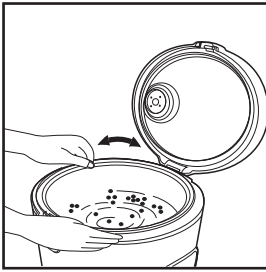
- (2) Add water up to the line indicated on the scale inside the inner pot



- Add water to the appropriate level according to the quantity of rice needed.
- The water volume can be increased according to the softness of the rice required ( note: the rice and water should not exceed the maximum water level inside the pot ).

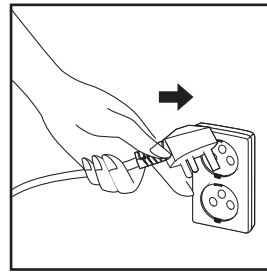
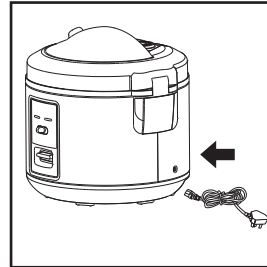
For example: For cooking 4 cups of rice, add water up to the "4" marker.

- (3) Wipe the outer surface of the inner pot with a dry cloth, lightly pour water into the pot up to the arrow indicated and gently turn the pot 2 or 3 times, so that the entire bottom is located close to the heating plate.



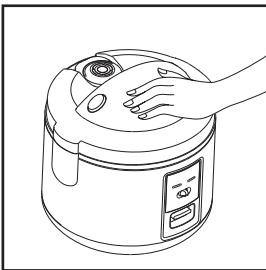
- Before using, wipe dry the bottom of the inner pot on the outside. If the inner pot is damp on the bottom, this will make a noise during cooking and could also lead to the rice cooker malfunctioning.

- (5) Starting the device: First of all, plug the power cord into the electric cooker, then plug the cord into the power outlet and connect the power. The rice cooker will be on standby mode.



- Do not connect the power until the rice cooker has been fully prepared for use.

- (4) When attaching the lid you will hear a click sound. This tells you that the lid has been closed completely.



- Do not open the lid during use, or cover with a towel or other objects. This can distort the lid, leading to malfunction.

## 7 Function operation

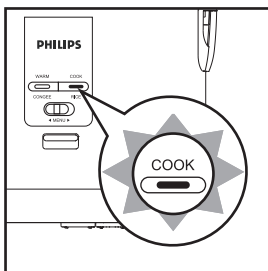
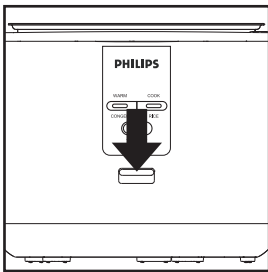
### Cooking

#### Preparation

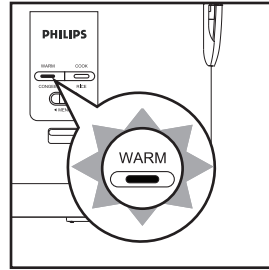
- (1) Use cups for measuring the rice. Once the inner pot has been cleaned, add water according to the scale line.
- (2) Wipe the outer surface of the inner pot dry with water and place it inside the cooker.
- (3) Attach the lid and connect to the power supply.
  - For specific operation instructions, refer to the "pre-cooking preparation" diagrams on Pages 10~11.
- (4) Please add more water, if the rice is not well cooked.

#### Starting to cook the rice

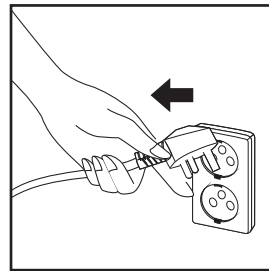
- (1) Press the control key, the "Cooking" function indicator lights up.



- (2) Once the rice has been cooked, the "Cooking" function indicator light switches off and the "Keep warm" function indicator light automatically switches on to show that the rice cooker is operating in "Keep warm" mode.



- (3) If the rice cooker is not in use, disconnect the plug.

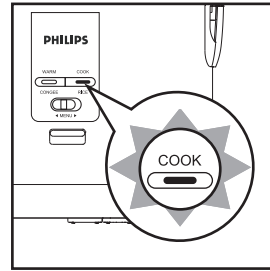


- Using the "Keep warm" function for a further 10 to 15 minutes will make the rice tastier.

# Cooking congee

## Preparation

- (1) Use cups for measuring the rice. Once the inner pot has been cleaned, add water according to the scale line.
- (2) Wipe the outer surface of the inner pot dry with water and place it inside the cooker.
- (3) Attach the lid and connect to the power supply.
  - For specific operation instructions, refer to the "pre-cooking preparation" diagrams on Pages 10~11.

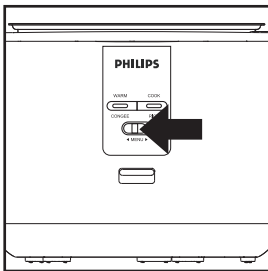


- For best results, stir the congee halfway through the cooking process.

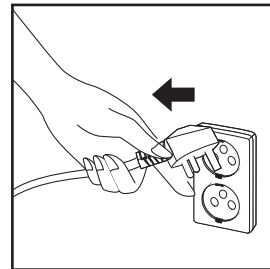
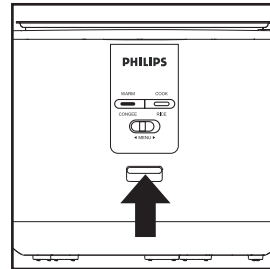
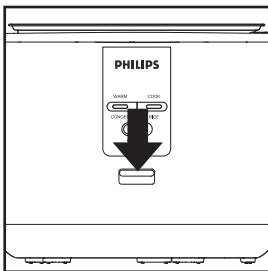
- (3) To complete the congee cooking process, push the control key, switch off the power and disconnect the plug from the power outlet.

## Starting to cook the congee

- (1) Set the function selection switch to CONGEE.



- (2) Press the control key to begin cooking the congee.

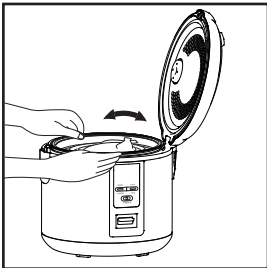
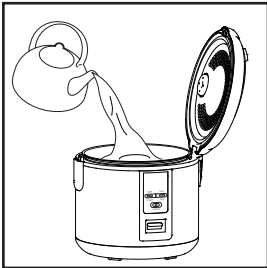


- Using the "Keep warm" function for a long time will result in the food being thicker and stickier.

## Steaming

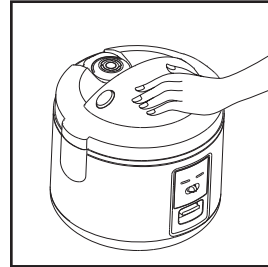
### Preparation

- (1) Pour the appropriate amount of clean water into the inner pot (you can adjust the volume according to your needs), place the steamer into the rice cooker and add food (if needed it can be placed on the plate). Place the inner pot inside at the point indicated by the arrow and gently turn the pot 2 or 3 times, so that the entire bottom is located close to the heating plate.



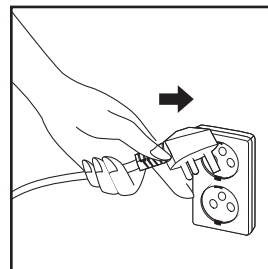
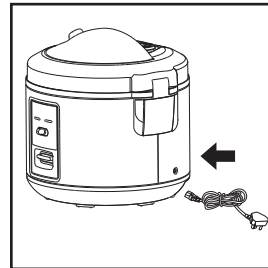
- To prevent food from overflowing, do not exceed the amount of water recommended.
- Rice should not be left cooking in the pot for too long.

- (2) When attaching the lid you will hear a click sound. This tells you that the lid has been closed completely.



- Do not open the lid during use, or cover with a towel or other objects. This can distort the lid, leading to malfunction.

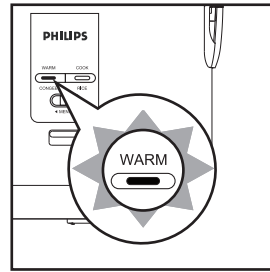
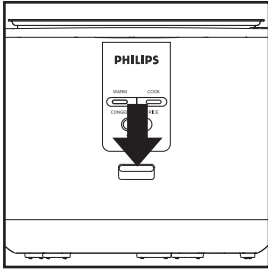
- (3) Starting the device: First of all, plug the power cord into the electric cooker, then plug the cord into the power outlet and connect the power. The rice cooker will be on standby mode.



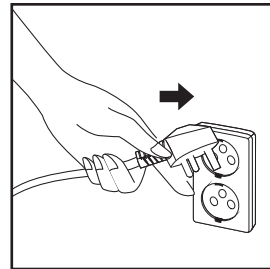
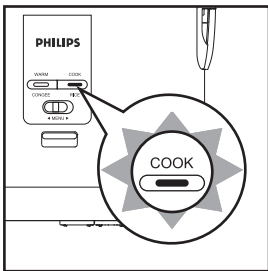
- Do not connect the power until the rice cooker has been fully prepared for use.

## The food starts to steam

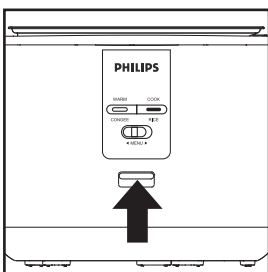
- (1) Press the control key, the "Cooking" function indicator lights up.



- (3) If the rice cooker is not in use, disconnect the plug.

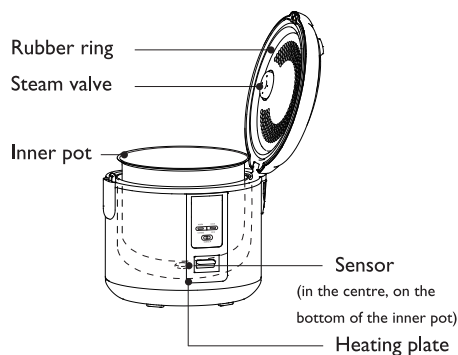


- (2) Once the rice has been steamed, turn the control key manually. The "Cooking" function indicator light switches off and the "Keep warm" function indicator light automatically switches on to show that the rice cooker is operating in "Keep warm" mode.



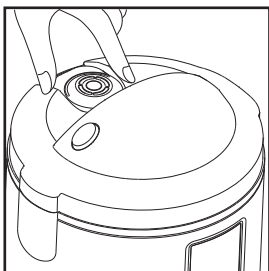
## 8 Maintenance

Before cleaning, disconnect the power plug and allow the product to cool. Do not wipe the surface with banana oil, petrol, household cleaning products or a hard brush.

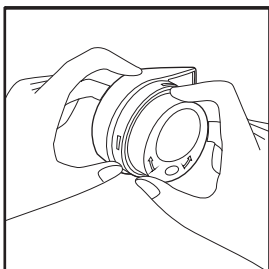


### Cleaning the steam valve

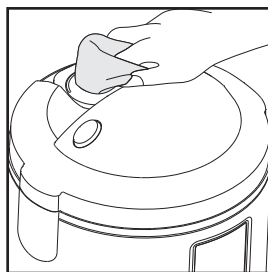
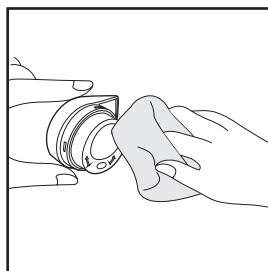
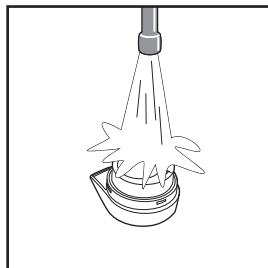
- (1) Remove the steam valve from the lid.



- (2) Turn the steam valve to the open position to remove.



- (3) Rinse with water and wipe with a damp cloth.

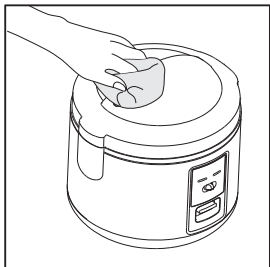


- After each use, it is recommended that you clean the steam valve, so as to prevent the steam valve from becoming blocked or overflowing the next time you use it.
- Clear any dirt from the steam valve, so as not to affect the cooking.

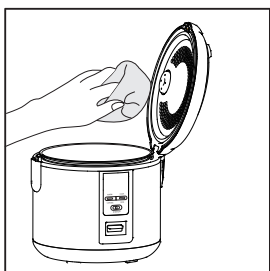


## Cleaning the cover (seal)

- (1) Use washing-up liquid to wipe the surface of the lid.



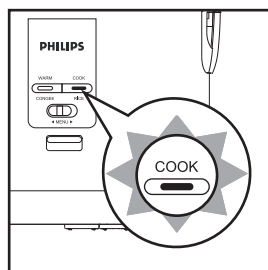
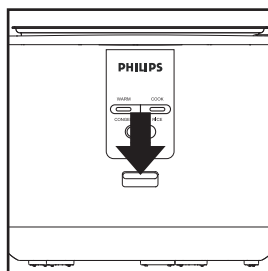
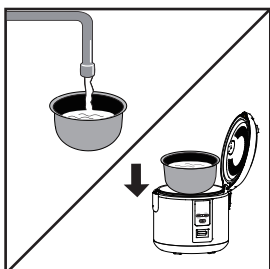
- (2) If stains on the inside of the pot lid are not washed promptly, dirt will stick to the inside and become difficult to wash. So it is recommended that you wipe the lid clean after each use.



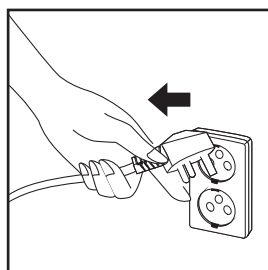
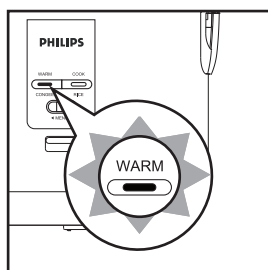
- Do not pull the rubber sealing ring.

## Cleaning the inner pot

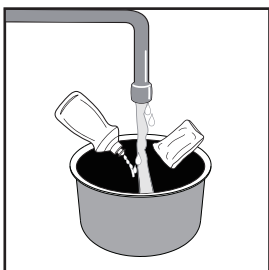
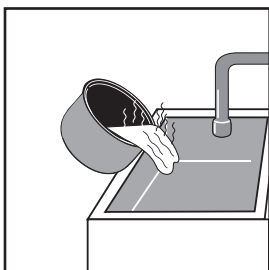
- (1) Pour the appropriate amount of water into the inner pot, place into the rice cooker and press the control key. The "Cooking" function indicator lights will switch on and the rice cooker will begin to work.



- (2) When the water is boiling, you need to manually raise the control lever, at which point the "Warm" function light will turn on and you can immediately disconnect the power plug.



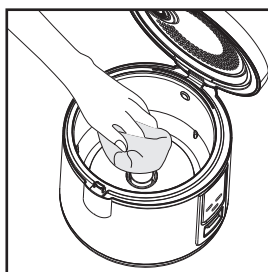
- (3) After the cooker has cooled, drain the water from the pot and gently wipe over the surface of the pot with a sponge and washing-up liquid, rinse with clean water and then dry the outside of the pot. Do not use a wire brush or any other hard object to clean to avoid damaging the non-stick coating.



- After long-term use, paint on the surface may become discoloured, change in appearance or become striped, but this will have no adverse effects.

## Cleaning the sensor and heating plate

- Lightly wipe the heating plate with fine sandpaper (around P600) or a dry cloth to avoid the sensor at the base of the pot sticking to the heating plate, which can affect the quality of the cooking.

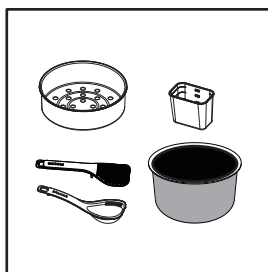


- Use a small stick to remove grain and dirt from gaps.
- After long-term use, the surface of the heating plate and the protection frame may become discoloured, change in appearance or become striped, but this will have no adverse effects.

## Cleaning the accessories

Clean with washing-up liquid, a sponge and water.

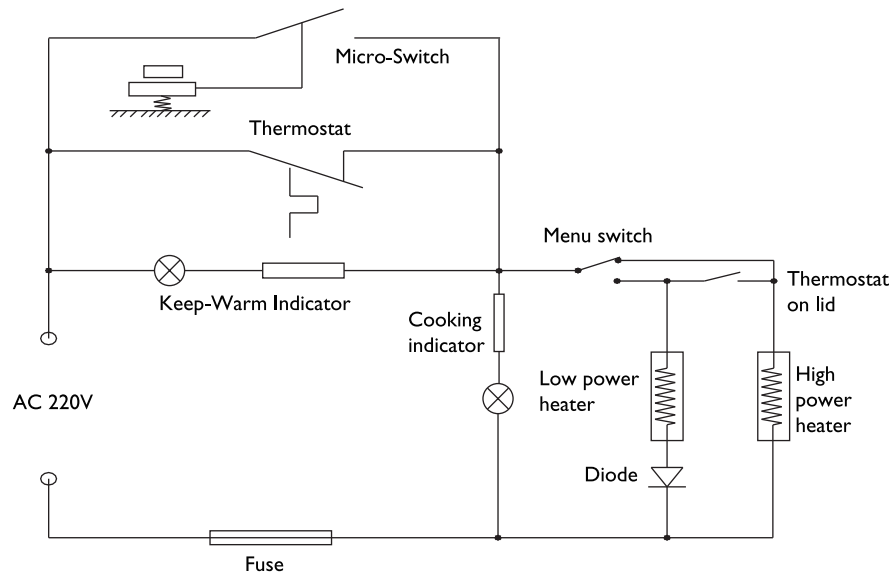
- Steamer, spoon, measuring cup and inner pot



- After washing with water, clean with a sponge.

## 9 Circuit diagram

HD3026、HD3029



# 10 Troubleshooting

If you encounter any problems while using this rice cooker, please check the following before you apply for assistance. If you cannot resolve the problem, please contact our designated specialised maintenance department.

Serial number	Faults		Causes	Solutions
1	The indicator light does not switch on	Electric heating plate does not heat up	The rice cooker is not connected to the power supply	Check that the power switch, fuse plugs and sockets and power supply lead are all in good working condition, and that the plug is connected properly
		Electric heating plate heats up	1. Indicator light wiring is loose 2. Indicator light is damaged	Contact the designated maintenance department for repair
2	The indicator light switches on	Electric heating plate does not heat up	1. Internal wiring is loose 2. Heating element is burnt out	Contact the designated maintenance department for repair
3	Using different foods or cooking for too long		1. Rice has not had long enough to cook 2. Electric heating plate is misshapen 3. Inner pot is misshapen 4. Inner pot is installed incorrectly, leaving a gap 5. Dirt between the inner pot and the heating plate	1. Cook the rice to your liking 2. Slightly misshapen equipment can be corrected using fine sandpaper. Severely misshapen equipment should be sent to the maintenance department to be replaced. 3. Contact the designated maintenance department to replace the pot 4. Gently rotate the inner pot to the correct position 5. Clean with fine sandpaper
4	The food could burn or will not be able to keep warm automatically		1. Instructions about the cooking button and lever should be complied with completely 2. Magnet fails to limit the temperature 3. Keep-warm element burns out or has a loose connection	Contact to the maintenance department designated for repair
5	Rice overflows		1. Steam valve installed incorrectly 2. Steam valve is misshapen or blocked by dirt 3. Thermostat on lid not working correctly	1. Install according to the instructions in the manual 2. Clean or remove dirt as required 3. Contact the designated maintenance department for repair

