

HD3085
HD3087



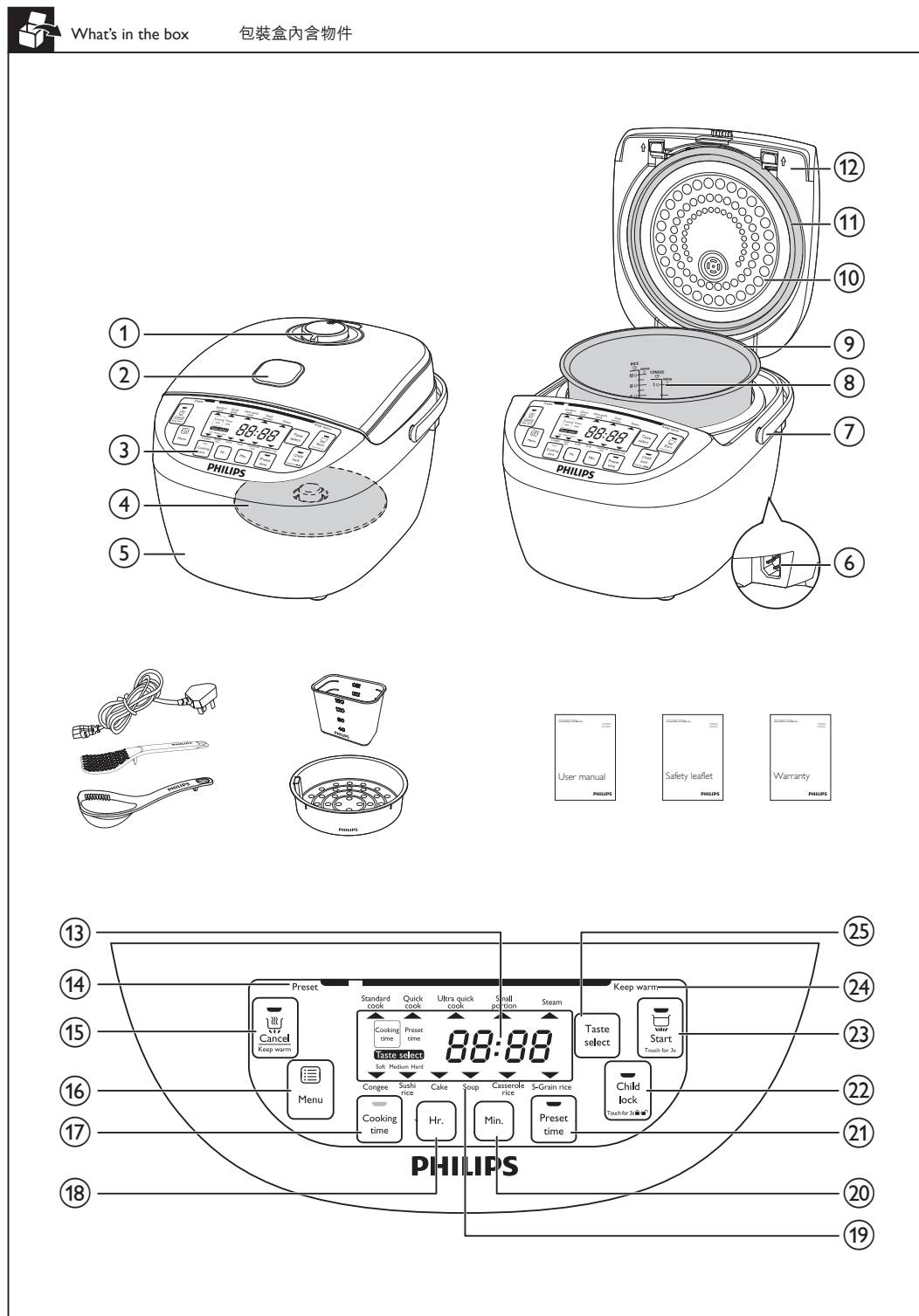
EN User manual ZH-HK 使用手冊

PHILIPS



All registered and unregistered trademarks are property of their respective owners.
© 2012 Koninklijke Philips Electronics N.V.
All rights reserved.

HD3085_3087_UM_ZH-HK_V1.0_0919



16	Menu button	23	Start button
17	Cooking time button	24	Keep warm indicator
18	Hour button	25	Taste select
19	Cooking functions		

Before first use

- Take out all the accessories from the inner pot. Remove the packaging material of the inner pot.
- Clean the parts of the rice cooker thoroughly before using the rice cooker for the first time (see chapter "Cleaning").

Note

- Make sure all parts are completely dry before you start using the rice cooker.

2 Using the fuzzy rice cooker

Before using the rice cooker, you need to follow below preparations:

- Measure the rice using the measuring cup provided.
- Wash the rice thoroughly.
- Put the pre-washed rice in the inner pot.
- Add water to the level indicated on the scale inside the inner pot that corresponds to the number of cups of rice used. Then smooth the rice surface.
- Press the release lever to open the lid.

English

1 Your fuzzy rice cooker

Congratulations on your purchase, and welcome to Philips! To fully benefit from the support that Philips offers, register your product at www.Philips.com/welcome.

What's in the box

Fuzzy rice cooker main unit
Rice scoop
Measuring cup
Safety leaflet

Steam basket
Soup ladle
User manual
Warranty card

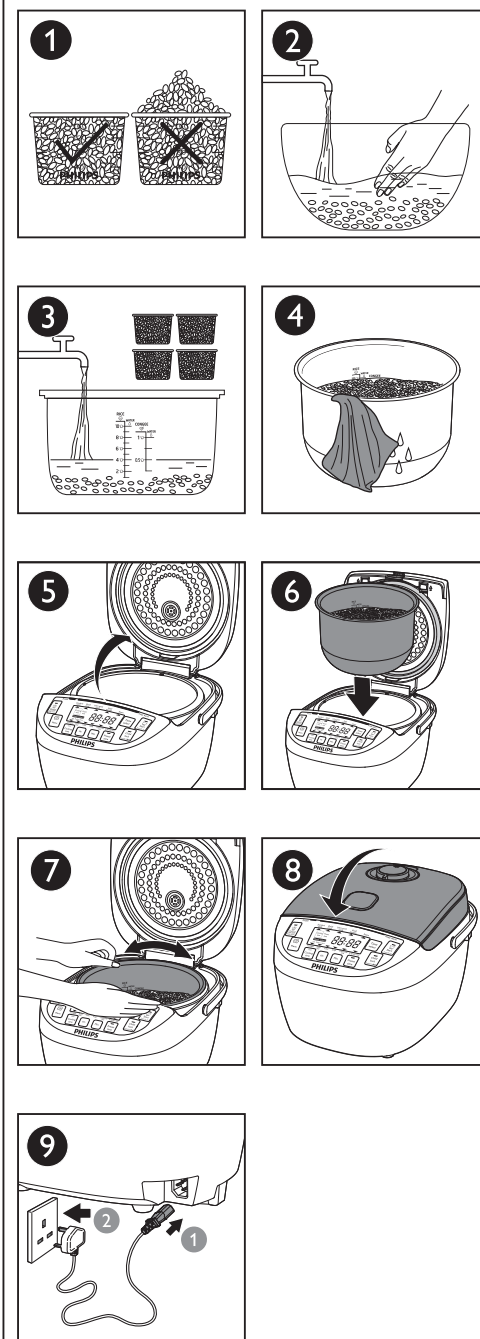
Overview

①	Detachable steam vent cap	⑦	Cooker handle
②	Lid release button	⑧	Water level indications
③	Control panel	⑨	Inner pot
④	Heating element	⑩	Detachable inner lid
⑤	Main body	⑪	Sealing ring
⑥	Power plug	⑫	Outer lid

Controls overview

⑬	Screen	⑳	Minute button
⑭	Preset indicator	㉑	Preset time button
⑮	Cancel/Keep warm button	㉒	Child lock button

1 Using the fuzzy rice cooker 使用快思電飯煲



Quick rice cooking (Quick cook)	40 minutes
Ultra quick rice cooking (Ultra quick cook)	35 minutes
Small amount of rice cooking (Small portion)	30 minutes
Five-grain rice cooking (5-Grain rice)	55 minutes
Sushi rice cooking (Sushi rice)	45 minutes

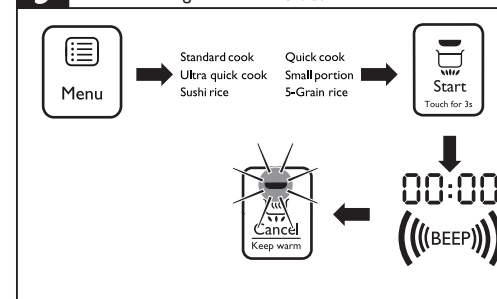
- Follow the preparation steps in "Using the fuzzy rice cooker".
- Press the menu button (☰) until the desired cooking function is selected.
→ Press the taste select button (Taste Select) to choose the preferred taste.
- Press and hold the start button (☑) for 3 seconds to start cooking, and the timer starts to countdown.
- When the cooking is finished, you will hear 4 beeps and the selected cooking function light will be off.
- The rice cooker will be in keep warm mode automatically.
→ The keep warm indicator (☑) will light up.

Rice cooking

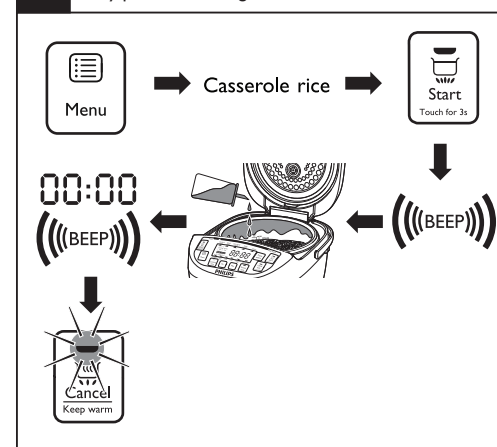
There are six rice cooking functions for HD3085 and HD3087.

Cooking function	Estimated cooking time for 8 cups of rice (HD3085) and 10 cups of rice (HD3087)
Standard rice cooking (Standard cook)	45 minutes

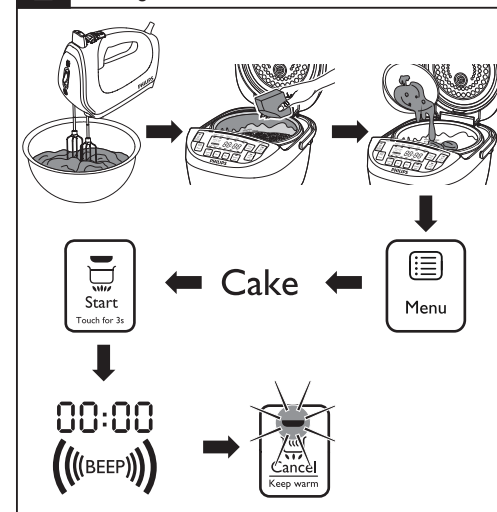
Rice cooking 煲飯



Clay pot rice cooking 烹調煲仔飯



Baking cake 焗蛋糕



Note

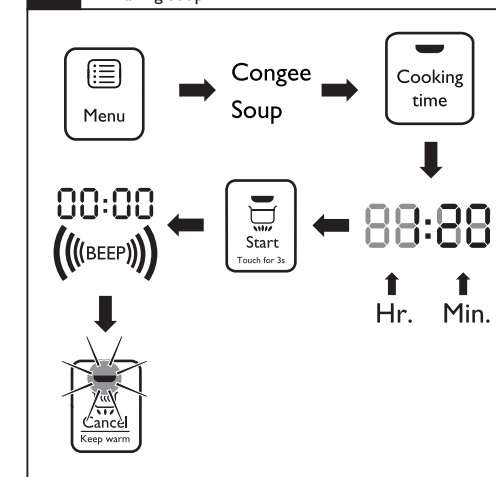
- To cook five-grain rice, boil the beans for a while before mixing them with other grains.
- After you have pressed the menu button (☰) and left it in idle for 10 seconds, your rice cooker will sound and return to waiting mode automatically.
- You can press the cancel button (☑) or unplug the rice cooker to turn off the keep warm function or when not in use.

Casserole rice cooking

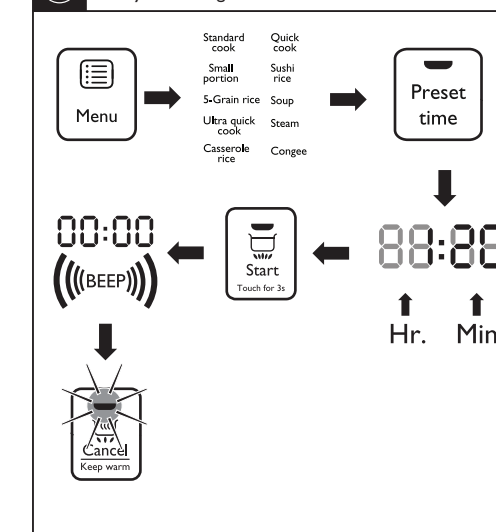
Cooking function	Estimated cooking time for 2 - 4 cups of rice (HD3085 and HD3087)
Casserole rice cooking (Casserole rice)	1 hour 10 minutes

- Follow the preparation steps in "Using the fuzzy rice cooker".
- Press the menu button (☰) until the casserole rice cooking function (Casserole rice) is selected.
→ Press the taste select button (Taste Select) to choose the preferred taste.
- Press and hold start button (☑) for 3 seconds to start cooking.
→ After a while, you will hear 4 beeps. Open the lid and add some cooking oil at the side of the inner pot.
- When the cooking is finished, you will hear 4 beeps and the selected cooking function light will be off.
- The rice cooker will be in keep warm mode automatically.
→ The keep warm indicator (☑) will light up.

Cooking congee and making soup 煲粥與煲湯



Preset time for delayed cooking 預設時間延時烹飪



Note

- After you have pressed the menu button (☰) and left it in idle for 10 seconds, your rice cooker will sound and return to waiting mode automatically.

Tip

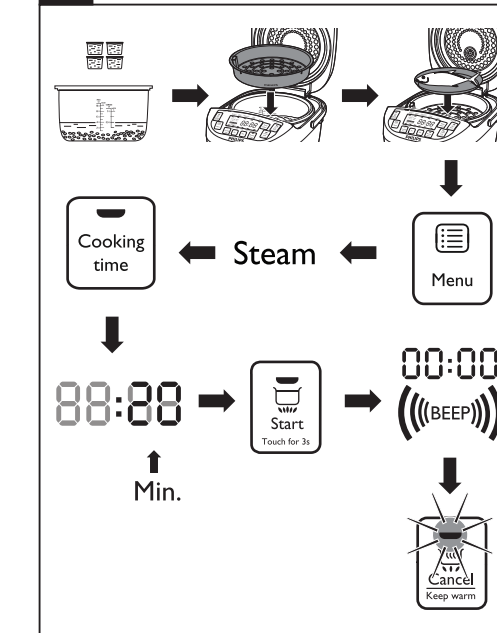
- You can press the cancel button (☑) or unplug the rice cooker to turn off the keep warm function or when not in use.

Cooking congee and making soup

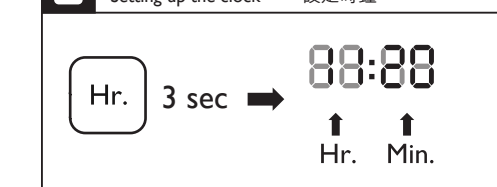
Cooking function	Estimated cooking time
Cooking congee (Congee)	1 hour (for 1 cups of rice for both HD3085 and HD3087)
Making soup (Soup)	1 hour

- Follow the preparation steps in "Using the fuzzy rice cooker".
- Press the menu button (☰) until the Soup (Soup) or Congee function (Congee) is selected.
- Press the cooking time button (⌚), and the timer will start flashing on the screen.
- Press the hour button (Hr.) and the minute button (Min.) to set the required cooking time.
- Press and hold the start button (☑) for 3 seconds to start cooking.

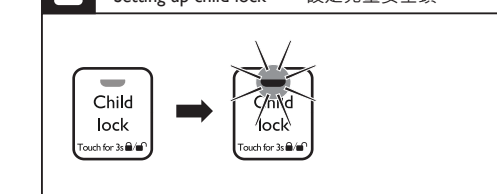
Steaming 蒸餛



Setting up the clock 設定時鐘



Setting up child lock 設定兒童安全鎖



- When the cooking is finished, you will hear 4 beeps and the selected cooking function light will be off.
- The rice cooker will be in keep warm mode automatically.
→ The keep warm indicator (☑) will light up.

Note

- Do not exceed the volume indicated nor exceed the maximum water level indicated in the inner pot, as this may cause the rice cooker to overflow.
- After you have pressed the menu button (☰) and left it in idle for 10 seconds, your rice cooker will sound and return to waiting mode automatically.
- You can press the cancel button (☑) or unplug the rice cooker to turn off the keep warm function or when not in use.
- It is normal to find the congee more stickier if it is left in keep warm mode for too long.

Tip

- You can select the cooking time between 1 to 4 hours.

Baking cake

Cooking function	Estimated cooking time
Baking cake (Cake)	45 minutes

- Whisk the ingredients for cake well.
- Coat the inner pot with some butter or cooking oil, and then pour the cake mixture into it.

- Follow steps 6 and 7 in “Using the fuzzy rice cooker”.
- Press the menu button () until your preferred cooking function (**Cake**) is selected.
- Press and hold the start button () for 3 seconds to start cooking.
- When the cooking is finished, you will hear 4 beeps and the selected cooking function light will be off.
- The rice cooker will be in keep warm mode automatically.
 - The keep warm indicator () will light up.
- Open the lid and carefully take out the inner pot to cool down.
- After the inner pot is cool down, put a plate or cake rack on top of the pot, and then flip over to take the cake out.

Note

- After you have pressed the menu button () and left it in idle for 10 seconds, your rice cooker will sound and return to waiting mode automatically.
- Use a kitchen glove or a cloth, as the inner pot will be very hot.
- You can press the cancel button () or unplug the rice cooker to turn off the keep warm function or when not in use.

Steaming	
Cooking function	Estimated cooking time
Steaming (Steam)	42 minutes

- Pour some water into the inner pot.
- Put the steam basket into the inner pot.
- Put the food into the steam basket.
- Follow step 7 in “Using the fuzzy rice cooker”.
- Press the menu button () until the steam function (**Steam**) is selected.
- Press the cooking time button (**Cooking time**), and the timer will start flashing on the display.
- Press the minute button (**Min.**) to set the required cooking time.
- Press and hold the start button () for 3 seconds to start cooking.
- When the cooking is finished, you will hear 4 beeps and the selected cooking function light will be off.
- The rice cooker will be in keep warm mode automatically.
 - The keep warm indicator () will light up.
- Open the lid and carefully take out the steamed food from the plate or steam basket.

Note

- Use a kitchen glove or a cloth, as the plate and steam basket will be very hot.
- You can cook up to 4 cups rice (HD3085) or 5 cups of rice (HD3087) while steaming.
- Do not exceed the volume indicated nor exceed the maximum water level indicated in the inner pot, as this may cause the rice cooker to overflow.
- You can adjust the water level as needed.
- After you have pressed the menu button () and left it in idle for 10 seconds, your rice cooker will sound and return to waiting mode automatically.
- You can press the cancel button () or unplug the rice cooker to turn off the keep warm function or when not in use.

Tip

- You can select the cooking time between 5 to 50 minutes.

Preset time for delayed cooking

You can preset the delayed cooking time for rice, casserole rice, congee, soup, and steaming. The preset timer is available up to 24 hours.

- Follow steps 6 and 7 in “Using the fuzzy rice cooker”.
- Press the menu button () until your preferred cooking function is selected.
- Use the default cooking time, or press the hour button (**Hr.**) and the minute button (**Min.**) to input the cooking time.
- Press the preset time button (), and the timer will start flashing on the screen.
- Press the hour button (**Hr.**) and the minute button (**Min.**) to set the preset time.
- Press and hold the start button () for 3 seconds to confirm the preset timer.
- When the preset time countdown is complete, the rice cooker will automatically switch to your selected cooking function mode and start cooking.
- When the cooking is finished, you will hear 4 beeps and the selected cooking function light will be off.
- The rice cooker will be in keep warm mode automatically.
 - The keep warm indicator () will light up.

Note

- Do not exceed the volume indicated nor exceed the maximum water level indicated in the inner pot, as this may cause the rice cooker to overflow.
- After you have pressed the menu button () and left it in idle for 10 seconds, your rice cooker will sound and return to waiting mode automatically.
- Once the rice cooker enters preset mode, the preset time button will not response.
- The default preset time is 4 hours.

Tip

- You can press the cancel button () or unplug the rice cooker to turn off the keep warm function or when not in use.

Setting up child lock

To protect your child from starting the rice cooker, you may set up the child lock function.

Press and hold the child lock button (**Child lock**) for 3 seconds to enter the child lock mode.

- The child lock (**Child lock**) indicator lights up.
- The other function buttons are not responsive.

To unlock, press and hold the child lock button (**Child lock**) for 3 seconds again.

- The child lock (**Child lock**) indicator is off.
- The other function buttons are responsive.

Setting up the clock

You can set up the clock on your fuzzy rice cooker.

- When the rice cooker is in standby mode, press and hold the hour (**Hr.**) or minute (**Min.**) button for 3 seconds.
 - The rice cooker beeps and the timer will start flashing on the screen.
- Press the hour (**Hr.**) button to set the hour unit; press the minute (**Min.**) button to set the minute unit.

Note

- After the time is set. The timer will flash for a while and automatically confirm the time.
- When setting the time, press and hold the minute (**Min.**) or hour (**Hr.**) button to fast forward in adjusting the minute or hour unit.

3 Specifications

Model Number	HD3085	HD3087
Rated power output	980W	980W
Rated capacity	4.0L	5.0L
Rice volume (cups)	1.5L (2-8)	1.8L (2-10)

4 Cleaning and Maintenance

Note

- Uplug the rice cooker before starting to clean it.
- Wait until the rice cooker has cooled down sufficiently before cleaning it.

Interior

inside of the outer lid and the main body:

- Wipe with wrung out and damp cloth.
- Make sure to remove all the food residues stuck to the rice cooker.

Heating element:

- Wipe with wrung out and damp cloth.
- Remove food residues with wrung out and damp cloth or toothpicks.

Exterior

Surface of the outer lid and outside of the main body:

- Wipe with a cloth damped with soap water.
- Only use soft and dry cloth to wipe the control panel.
- Make sure to remove all the food residues around the control buttons.

Accessories

Rice scoop, soup ladle, inner pot, power cord holder, scoop holder, steam basket, steam vent cap, and inner lid.

- Soak in hot water and clean with sponge.

5 Environment

Do not throw away the appliance with normal household waste at the end of its life, but hand it in at an official collection point for recycling. By doing this, you can help to preserve the environment.

6 Guarantee and service

If you need service or information, or if you have a problem, visit the Philips website at www.philips.com or contact the Philips Customer Care Center in your country. You can find its phone number in the worldwide guarantee leaflet. If there is no Customer Care Center in your country, go to your local Philips dealer.

7 Troubleshooting

If you encounter problems when using this rice cooker, check the following points before requesting service. If you cannot solve the problem, contact the Philips Consumer Care Center in your country.

Problem	Solution
The lights on the buttons does not go on.	There is a connection problem. Check if the power cord is connected to the cooker properly and if the plug is inserted firmly into the power outlet.
The display does not function.	The light is defective. Take the appliance to your Philips dealer or a service center authorized by Philips.
The rice cooker is not connected to the power supply. If there is no power supply, the power failure backup function does not work and the display does not function.	The rice cooker is not connected to the power supply. If there is no power supply, the power failure backup function does not work and the display does not function.
The rice is not cooked.	There is not enough water. Add water according to the scale on the inside of the inner pot.

You did not press the start button ().	Make sure that there is no foreign residue on the heating element and the outside of the inner pot before switching the rice cooker on.
The heating element is damaged, or the inner pot is deformed. Take the cooker to your Philips dealer or a service center authorized by Philips.	The temperature control is defective. Take the appliance to your Philips dealer or a service center authorized by Philips.

The rice is not well cooked.	Add more water to the rice.
------------------------------	-----------------------------

The cooker does not switch to keep warm mode automatically.	The temperature control is defective. Take the appliance to your Philips dealer or a service center authorized by Philips.
---	--

The rice is scorched.	You have not rinse the rice properly. Rinse the rice until the water runs clear.
-----------------------	--

Water spills out of the rice cooker during cooking.	Make sure that you add water to the level indicated on the scale inside the inner pot that corresponds to the number of cups of rice used.
---	--

標準煲飯 (Standard cook)	45 分鐘
快速煲飯 (Quick cook)	40 分鐘
超快速煲飯 (Ultra quick cook)	35 分鐘
少量煲飯 (Small portion)	30 分鐘

五穀煲飯 (5-Grain rice)	55 分鐘
壽司米煲飯 (Sushi rice)	45 分鐘

The cake result is too hard.	Use cake mix and follow the instructions provided in the user manual.
------------------------------	---

I cannot get to the desired cooking function.	Press the menu button () repeatedly to select the desired menu as shown by the LED indicator.
---	--

Rice smells bad after cooking	Clean the inner pot with some washing detergent and warm water.
-------------------------------	---

Error message (E1, E2, E3, or E4) appears on the display.	There has been a power failure during cooking. Take the appliance to your Philips dealer or a service center authorized by Philips.
---	---

繁體中文

1 您的快思電飯煲

感謝您購買 Philips 產品，歡迎來到 Philips 世界！要享受 Philips 為您提供的全面支援，請在以下網站 www.Philips.com/welcome 註冊您的產品。

包裝盒內含物件

快思電飯煲主裝置	蒸架
飯勺	湯勺
量杯	用戶手冊
安全單張	保用證

概覽

 ① 分離式蒸氣通氣孔蓋	 ⑦ 電飯煲手柄
 ② 開蓋按鈕	 ⑧ 水位顯示
 ③ 控制面板	 ⑨ 內鍋
 ④ 加熱元件	 ⑩ 分離式上蓋
 ⑤ 機身	 ⑪ 密封圈
 ⑥ 電源插頭	 ⑫ 外蓋

控制鍵概覽

 ⑬ 屏幕	 ⑳ 分鐘按鈕
 ⑭ 預設指示燈	 ㉑ 預設時間按鈕
 ⑮ 取消/保溫按鈕	 ㉒ 兒童安全鎖按鈕
 ⑯ 功能表按鈕	 ㉓ 開始按鈕
 ⑰ 烹調時間按鈕	 ㉔ 保溫指示燈
 ⑱ 小時按鈕	 ㉕ 軟硬選擇
 ⑲ 烹調功能	

首次使用前

- 從內鍋取出所有配件。拆取內鍋的包裝材料。
- 首次使用電飯煲前，徹底清潔電飯煲的部件（請參閱「清潔」章節）。

提示

- 開始使用電飯煲前，確保所有部件完全乾透。

2 使用快思電飯煲

使用電飯煲前，請遵循以下準備事項：

- 使用隨附的量杯量度米飯。
- 徹底洗米。
- 將事先洗好的米放入內鍋。
- 對應使用的杯數，將水加到內鍋刻度註明的水位。然後鋪平米的表面。
- 按釋放開蓋。
- 將內鍋放入電飯煲。檢查內鍋與加熱元件適當接合。
- 關上電飯煲蓋，將插頭插入電源插座。

提示

- 每杯未煮的米通常煮出 2 碗飯。請勿超出內鍋內部註明的水量。1 杯米約為 180 毫升。
- 內鍋內標有的水平歸屬指示。您可根據不同米飯的類型及自己的喜好隨時調節水位。
- 如居住地區的電壓不穩定，電飯煲可能出現溢出的情況。
- 除了以下水平指示之外，您亦可透過 1:1-1.2 的米水比例煲飯，以及 1:8 的米水比例煲粥。請勿超出內鍋內部註明的水量。
- 確保內鍋外部乾爽清潔，加熱元件及磁簧開關沒有異物。

煲飯

HD3085 和 HD3087 有六個煲飯功能。

烹調功能	8 杯米 (HD3085) 和 10 杯米 (HD3087) 的預計烹調時間
標準煲飯 (Standard cook)	45 分鐘
快速煲飯 (Quick cook)	40 分鐘
超快速煲飯 (Ultra quick cook)	35 分鐘
少量煲飯 (Small portion)	30 分鐘
五穀煲飯 (5-Grain rice)	55 分鐘
壽司米煲飯 (Sushi rice)	45 分鐘

- 請按照「使用快思電飯煲」的準備步驟。
- 按功能表按鈕 ()，直至選擇所需烹調功能。
 - 按軟硬選擇按鈕 (**Taste Select**) 以選擇鎖要的米飯軟硬度。
- 按住開始按鈕 () 3 秒即可開始烹調，時間掣便會開始倒數。
- 完成烹調時，您將會聽到 4 下嗶聲，所選烹調功能燈將會熄滅。
- 電飯煲將會自動處於保溫模式。
 - 系統會指示保溫游標。

提示

- 要煲五種米飯，請先煲豆類，然後再與其他穀糧混合烹煮。
- 按功能表按鈕 () 後，如果電飯煲閒置 10 秒，將會發出聲響並自動返回等候模式。
- 您可按取消按鈕 () 關閉保溫功能，或於不使用時拔除電飯煲的插頭。

烹調煲仔飯

烹調功能	2 - 4 杯米 (HD3085 和 HD3087) 的預計烹調時間
烹調煲仔飯 (Casserole rice)	1 小時 10 分鐘

- 請按照「使用快思電飯煲」的準備步驟。
- 按功能表按鈕 ()，直至選擇烹調煲仔飯 (**Casserole rice**)。
 - 按軟硬選擇按鈕 (**Taste Select**) 以選擇鎖要的米飯軟硬度。
- 按住開始按鈕 () 3 秒開始烹調。

- 一段時間後，您將會聽到 4 下嗶聲。開蓋並於內鍋側邊加入一些煮食油。

- 完成烹調時，您將會聽到 4 下嗶聲，所選烹調功能燈將會熄滅。
 - 系統會指示保溫游標。
- 電飯煲將會自動處於保溫模式。
 - 系統會指示保溫游標。

提示

- 按功能表按鈕 () 後，如果電飯煲閒置 10 秒，將會發出聲響並自動返回等候模式。

貼士

- 您可按取消按鈕 () 關閉保溫功能，或於不使用時拔除電飯煲的插頭。

煲粥與煲湯

烹調功能	預計烹調時間
煲粥 (Congee)	1 小時 (HD3085 和 HD3087 均為 1 杯米)
煲湯 (Soup)	1 小時

- 請按照「使用快思電飯煲」的準備步驟。
- 按功能表按鈕 ()，直至選擇煲湯 (**Soup**) 或煲粥功能 (**Congee**)。
- 按烹調時間按鈕 ()，時間掣將會在屏幕上開始閃爍。
- 按小時按鈕 (**Hr.**) 和分鐘按鈕 (**Min.**) 即可設定所需烹調時間。
- 按住開始按鈕 () 3 秒以開始烹調。
- 完成烹調時，您將會聽到 4 下嗶聲，所選烹調功能燈將會熄滅。
- 電飯煲將會自動處於保溫模式。
 - 系統會指示保溫游標。

提示

- 請勿超出內鍋註明的最高水平，否則可能令電飯煲溢出。
- 按功能表按鈕 () 後，如果電飯煲閒置 10 秒，將會發出聲響並自動返回等候模式。
- 您可按取消按鈕 () 關閉保溫功能，或於不使用時拔除電飯煲的插頭。
- 如果長時間處於保溫模式，粥可能會較黏身。

貼士

- 您可選擇 1 至 4 小時之間的烹調時間。

焗蛋糕

烹調功能	預計烹調時間
焗蛋糕 (Cake)	45 分鐘

- 將蛋糕材料均勻攪拌。
- 將一些牛油或煮食油塗在內鍋的表面，然後倒入蛋糕麵漿。
- 請按照「使用快思電飯煲」的第 6 步和第 7 步操作。
- 按功能表按鈕 ()，直至選擇所需的烹調功能 (**Cake**)。
- 按住開始按鈕 () 3 秒以開始烹調。
- 完成烹調時，您將會聽到 4 下嗶聲，所選烹調功能燈將會熄滅。
- 電飯煲將會自動處於保溫模式。
 - 系統會指示保溫游標。
- 開蓋並小心取出內鍋冷卻一會。
- 內鍋冷卻後，在內鍋上放置碟子或蛋糕架，然後翻轉將蛋糕取出。

提示

- 按功能表按鈕 () 後，如果電飯煲閒置 10 秒，將會發出聲響並自動返回等候模式。
- 內鍋將會非常燙熱，請使用廚房手套或抹布。
- 您可按取消按鈕 () 關閉保溫功能，或於不使用時拔除電飯煲的插頭。

蒸煮

烹調功能	預計烹調時間
蒸煮 (Steam)	42 分鐘

- 將一些水倒入內鍋。
- 將蒸架放入內鍋。
- 將食物放入蒸架。
- 請按照「使用快思電飯煲」的第 7 步操作。
- 按功能表按鈕 ()，直至選擇蒸煮功能 (**Steam**)。
- 按烹調時間按鈕 (**Cooking time**)，時間掣將會在屏幕上開始閃爍。
- 按分鐘按鈕 (**Min.**) 以輸入所需烹調時間。

- 按住開始按鈕 () 3 秒以開始烹調。
- 完成烹調時，您將會聽到 4 下嗶聲，所選烹調功能燈將會熄滅。
- 電飯煲將會自動處於保溫模式。
 - 系統會指示保溫游標。
- 開啟上蓋，小心從盤中或從蒸架取出蒸熟的食物。

提示

- 因為盤子或蒸架會非常燙手，所以請使用廚房隔熱手套或布。
- 蒸煮時，您可同時煲最多 4 杯米 (HD3085) 或 5 杯米 (HD3087)。
- 請勿超出內鍋註明的最高水平，否則可能令電飯煲溢出。
- 您可視需求調整水平。
- 按功能表按鈕 () 後，如果電飯煲閒置 10 秒，將會發出聲響並自動返回等候模式。
- 您可按取消按鈕 () 關閉保溫功能，或於不使用時拔除電飯煲的插頭。

貼士

- 您可選擇 5 至 50 分鐘之間的烹調時間。

預設時間延時烹飪

您可預設米飯、煲仔飯、粥、湯和蒸煮的延遲烹調時間。預校時間最長可達 24 小時。

- 請按照「使用快思電飯煲」的第 6 步和第 7 步操作。
- 按功能表按鈕 ()，直至選擇所需的烹調功能。
- 使用預設烹調時間，或按小時按鈕 (**Hr.**) 和分鐘按鈕 (**Min.**) 以輸入烹調時間。
- 按預設時間按鈕 ()，時間掣將會在屏幕上開始閃爍。
- 按小時按鈕 (**Hr.**) 和分鐘按鈕 (**Min.**) 以設定預設時間。
- 按住開始按鈕 () 3 秒以確認預設時間掣。
- 預設時間倒數結束時，電飯煲將會自動切換至所選烹調功能模式並開始烹調。
- 完成烹調時，您將會聽到 4 下嗶聲，所選烹調功能燈將會熄滅。
- 電飯煲將會自動處於保溫模式。
 - 系統會指示保溫游標。

提示

- 請勿超出內鍋註明的最高水平，否則可能令電飯煲溢出。
- 按功能表按鈕 () 後，如果電飯煲閒置 10 秒，將會發出聲響並自動返回等候模式。
- 電飯煲進入預設模式後，預設時間按鈕將不會作出反應。
- 預設預校時間為 4 小時。

貼士

- 您可按取消按鈕 () 關閉保溫功能，或於不使用時拔除電飯煲的插頭。

設定兒童安全鎖

要防止小童啟動電飯煲，您可設定兒童安全鎖功能。按住兒童安全鎖按鈕 (**Child lock**) 3 秒即可進入兒童安全鎖模式。

- 兒童安全鎖 (**Child lock**) 指示燈就會亮起。
- 其他功能按鈕並不會做出反應。

如要解鎖，再次按住兒童安全鎖按鈕 (**Child lock**) 3 秒。

- 兒童安全鎖 (**Child lock**) 指示燈就會熄滅。
- 其他功能按鈕就會做出反應。

設定時鐘

您可以在快思電飯煲上設定時鐘。

- 電飯煲在待機模式中時，按住小時 (**Hr.**) 或分鐘 (**Min.**) 按鈕