

**PHILIPS**

AC0819



EN

User manual

3

ZH-T

用戶手冊

15



# Contents

<b>1</b>	<b>Important .....</b>	<b>4</b>
	Safety .....	4
<b>2</b>	<b>Your air purifier .....</b>	<b>6</b>
	Product Overview .....	6
	Controls overview .....	7
<b>3</b>	<b>Using the air purifier .....</b>	<b>7</b>
	Understanding the air quality light .....	7
	Installing the filter .....	8
	Connecting power .....	8
	Turning on and off .....	8
	Changing the mode setting .....	9
<b>4</b>	<b>Cleaning .....</b>	<b>9</b>
	Cleaning schedule .....	9
	Cleaning the body of the air purifier .....	10
	Cleaning the air quality sensor .....	10
	Cleaning the surface of the filter .....	10
<b>5</b>	<b>Replacing the filter .....</b>	<b>11</b>
	Understanding the healthy air protect lock .....	11
	Replacing the filter .....	11
	Filter reset .....	12
<b>6</b>	<b>Storage .....</b>	<b>12</b>
<b>7</b>	<b>Troubleshooting .....</b>	<b>12</b>
<b>8</b>	<b>Guarantee and service .....</b>	<b>14</b>
	Order parts or accessories .....	14
<b>9</b>	<b>Notices .....</b>	<b>14</b>
	Electromagnetic fields (EMF) .....	14
	Recycling .....	14

# 1 Important

---

## Safety

Read this user manual carefully before you use the appliance, and save it for future reference.

### Danger

- Do not clean the appliance with water, any other liquid, or a (flammable) detergent to avoid electric shock and/or a fire hazard.
- Do not spray any flammable materials such as insecticides or fragrance around the appliance.

### Warning

- Check if the voltage indicated on the appliance corresponds to the local power voltage before you connect the appliance.
- If the power cord is damaged, you must have it replaced by Philips, a service center authorized by Philips, or similarly qualified persons in order to avoid a hazard.
- Do not use the appliance if the adaptor, the power cord, or the appliance itself is damaged.
- Only use the approved 2-pin plug adapter (KA1801A-2400750US) provided with the appliance.
- This appliance can be used by children aged from 8 years and above and persons with reduced physical, sensory or mental capabilities or lack of experience and knowledge if they have been given supervision or instruction concerning use of the appliance in a safe way and understand the hazards involved.
- Children shall not play with the appliance.
- Do not block the air inlet and outlet.
- Do not place any items on top of the air outlet, or in front of the air inlet.
- Make sure that foreign objects do not fall into the appliance through the air outlet.

## Caution

- This appliance is not a substitute for proper ventilation, regular vacuum cleaning, or use of an extractor hood or fan while cooking.
- Always place and use the appliance on a dry, stable, level, and horizontal surface.
- Leave at least 20cm free space around the appliance and leave at least 30cm free space above the appliance.
- Do not sit or stand on the appliance. Do not place anything on top of the appliance.
- Do not place the appliance directly below an air conditioner to prevent condensation from dripping onto the appliance.
- Only use the original Philips filters specially intended for this appliance. Do not use any other filters.
- Combustion of the filter may cause irreversible human hazard and/or jeopardize other lives. Do not use the filter as fuel or for similar purpose.
- Avoid knocking against the appliance (the air inlet and outlet in particular) with hard objects.
- Do not insert your fingers or objects into the air outlet or the air inlet to prevent physical injury or malfunctioning of the appliance.
- Do not use this appliance when you have used indoor smoke-type insect repellents or in places with oily residues, burning incense, or chemical fumes.
- Do not use the appliance near gas appliances, heating devices or fireplaces.
- Always turn off the air purifier first, then unplug adapter from wall outlet, when you want to moving, cleaning appliance, replacing the filters or carry out other maintenance.
- The appliance is only intended for household use under normal operating conditions.
- Do not use the appliance in wet surroundings or in surroundings with high ambient temperatures, such as the bathroom, toilet, or kitchen, or in a room with major temperature changes.

- The appliance does not remove carbon monoxide (CO) or radon (Rn). It cannot be used as a safety device in case of accidents with combustion processes and hazardous chemicals.

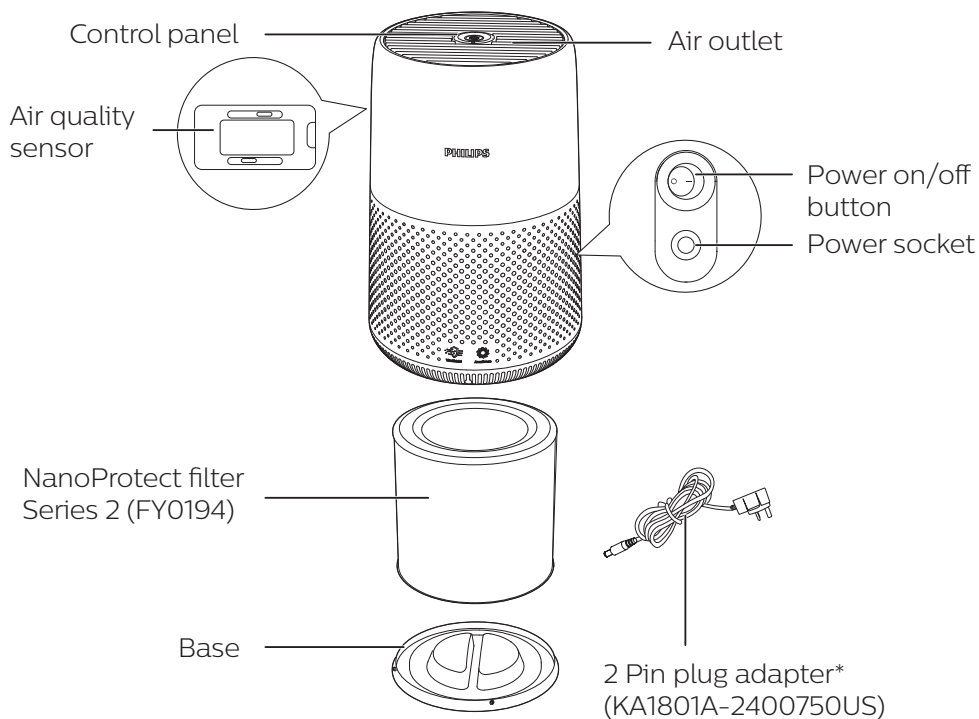
## 2 Your air purifier

Congratulations on your purchase, and welcome to Philips!

To fully benefit from the support that Philips offers, register your product at [www.philips.com/welcome](http://www.philips.com/welcome).

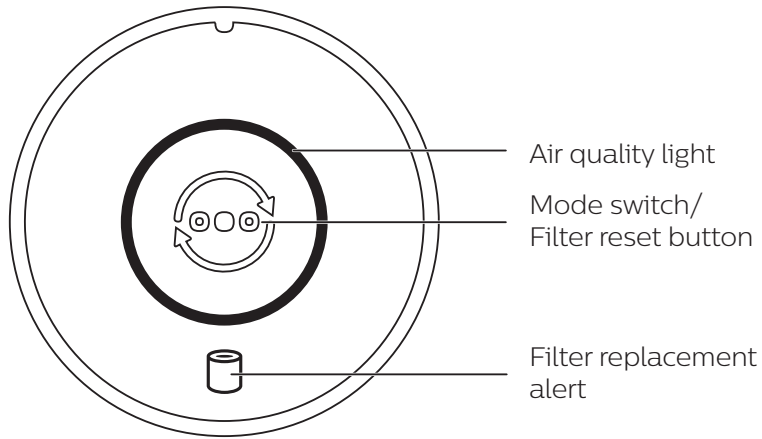
---

### Product Overview



\*Please use only the 2 pin plug adapter provided.

## Controls overview



## 3 Using the air purifier

### Understanding the air quality light

The color of air quality light corresponds to the ambient air quality.  
The brightness of air quality light reflects the current running mode.

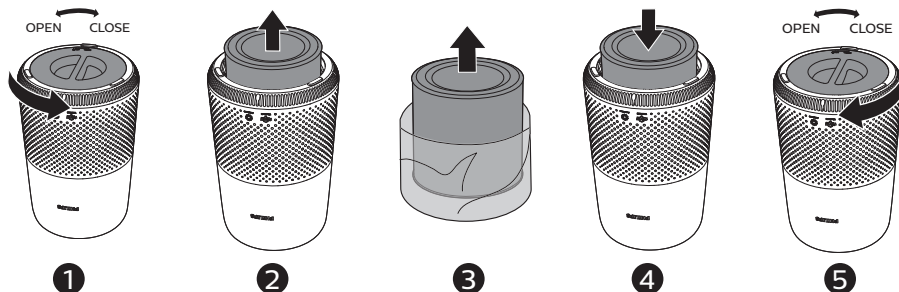
PM2.5 level	Air quality light color	Air quality level
≤12	Blue	Good
13-35	Blue-purple	Fair
36-55	Purple-red	Poor
>55	Red	Very poor

---

## Installing the filter

Remove all packaging of the filter before use.

**Note:** Make sure the air purifier is unplugged from the electrical outlet before installing the filter.



- 1 Rotate the base anti-clockwise to remove it from the appliance.
- 2 Pull the filter out from the appliance.
- 3 Remove all packaging materials of the air purification filter.
- 4 Put the filter back into the appliance.
- 5 Reattach the base and rotate it clockwise to fasten the base.

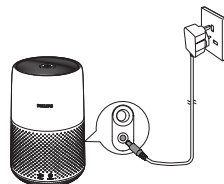
---

## Connecting power

**Note:** Risk of electric shock! When you unplug the AC power cord, always pull the plug from the socket. Never pull the cord.

Connect the power adapter to:



- First, the power socket on the appliance.
- Then, the wall outlet.



---


## Turning on and off

**Note:**

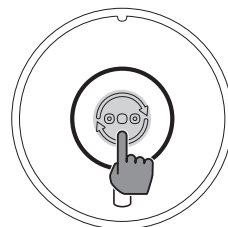
- For optimum purification performance, close doors and windows.
- 1 Press the power button  on the back of the air purifier to switch on.  
↳ The air purifier operates in the auto mode by default.
  - 2 Press the power  button again to switch off the air purifier.



## Changing the mode setting

You can choose Auto mode, Turbo mode or the Sleep mode by pressing the mode switch button . The brightness of air quality light reflects the current running mode:

- Sleep mode-lowest brightness
- Auto mode-mid level brightness
- Turbo mode-highest level brightness



### Auto mode

In Auto mode, the appliance selects the fan speed in accordance with the ambient air quality.

### Turbo mode

In Turbo mode, the air purifier operates on the highest speed.

### Sleep mode

In Sleep mode, the air purifier operates quietly at a low speed.

## 4 Cleaning

### Note:

- Never use abrasive, aggressive, or flammable cleaning agents such as bleach or alcohol to clean any part of the appliance.

## Cleaning schedule

Frequency	Cleaning method
When necessary	Wipe the surface of the appliance with a soft dry cloth
	Clean the air outlet cover
Every two months	Clean the air quality sensor with a dry cotton swab
Every four weeks	Clean the surface of the filter

---

## Cleaning the body of the air purifier

Regularly clean the inside and outside of the air purifier to prevent dust from collecting.

- 1 Use a soft, dry cloth to clean both the interior and exterior of the air purifier.
- 2 The air outlet can also be cleaned with a dry, soft cloth.

---

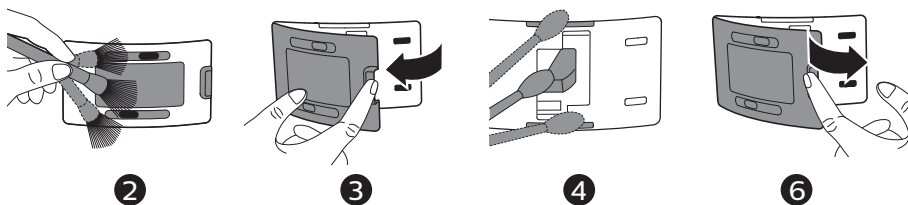
## Cleaning the air quality sensor

Clean the air quality sensor every two months for optimal functioning of the appliance.

### Note:

- If the air purifier is used in a dusty environment, it may need to be cleaned more often.
- If the humidity level in the room is very high, condensation may develop on the air quality sensor and the air quality light may indicate a poorer air quality even though the air quality is actually good. If this occurs, clean the air quality sensor or use the air purifier on a manual speed setting.

- 1 Switch off the air purifier and unplug from the power socket.



- 2 Clean the inlet and outlet of the air quality sensor with a soft brush.
- 3 Open the air quality sensor cover.
- 4 Clean the air quality sensor, the dust inlet and the dust outlet with a damp cotton swab.
- 5 Dry all parts thoroughly with a dry cotton swab.
- 6 Reattach the air quality sensor cover.

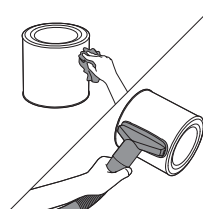
---

## Cleaning the surface of the filter

Wipe the surface of the filter with soft wet cloth or clean the surface of the filter with a vacuum cleaner.



### Note:

- if you use a high power/ industrial vacuum cleaner, it may damage the filter.



## 5 Replacing the filter

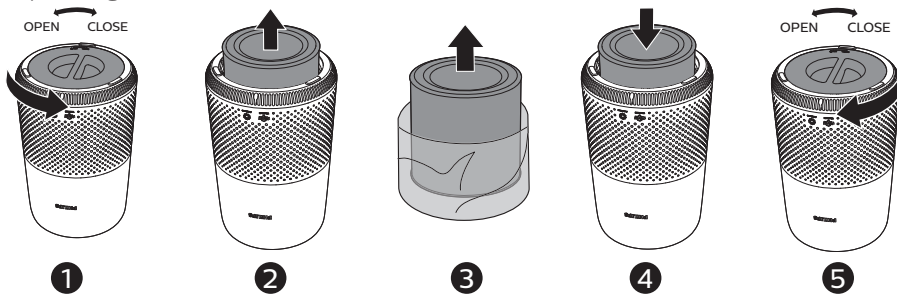
### Understanding the healthy air protect lock



This appliance is equipped with the healthy air protect lock to make sure that the NanoProtect filter is in optimal condition when the appliance is operating. When the filter is almost expired, the filter replacement alert (  ) lights up red, which indicates that it needs to be replaced. If you do not replace the filter in time, the filter replacement alert (  ) will flash. The appliance will stop operating and get locked.

### Replacing the filter

**Note:**


- The filter is not washable or reusable.
- Always turn off the air purifier and unplug from the electrical outlet before replacing the filter.





- 1 Rotate the base anti-clockwise to remove it from the appliance.
- 2 Pull the filter out from the appliance. Discard the used filter.
- 3 Remove all packaging materials of the new filter.
- 4 Put the filter into the appliance.
- 5 Reattach the base and rotate it clockwise to fasten the base.
- 6 Put the plug of the air purifier in the power socket.
- 7 Press the power  button to switch on the appliance.
- 8 Press and hold  for 3 seconds to reset the filter lifetime counter.
- 9 Wash your hands thoroughly after replacing the filter.

---

## Filter reset

You can replace the filter even before filter replacement alert (  ) displays on the screen. After replacing a filter, you need to reset the filter lifetime counter manually.

- 1 Press the power button  to turn on the appliance.
- 2 Within 10 seconds after power on, press and hold the mode switch button  for 5 seconds to reset the filter lifetime counter.

## 6 Storage

- 1 Turn off the air purifier and unplug from the power socket.
- 2 Clean the air purifier, air quality sensor and the surface of the filter (see chapter 'Cleaning').
- 3 Let all parts air dry thoroughly before storing.
- 4 Wrap the filter in air tight plastic bags.
- 5 Store the air purifier, filter in a cool, dry location.
- 6 Always thoroughly wash hands after handling a filter.



## 7 Troubleshooting

This chapter summarizes the most common problems you could encounter with the appliance. If you are unable to solve the problem with the information below, contact the Consumer Care Center in your country.

---

Problem	Possible solution
The appliance does not work even though it is plugged in.	<ul style="list-style-type: none"><li>• The filter replacement alert is on but you have not replaced the corresponding filter. As a result, the appliance is now locked. In this case, replace the filter and reset the filter lifetime counter.</li></ul>
The airflow that comes out of the air outlet is significantly weaker than before.	<ul style="list-style-type: none"><li>• The surface of the filter is dirty. Clean the surface of the filter (see the chapter "Cleaning").</li></ul>

---

Problem	Possible solution
The air quality does not improve, even though the appliance has been operating for a long time.	<ul style="list-style-type: none"> <li>• Check if the packing material is removed from the filter.</li> <li>• Make sure that the filter is properly installed.</li> <li>• The air quality sensor is dirty or wet. Clean the air quality sensor (See the chapter "Cleaning").</li> <li>• Room size is large or the outdoor air quality is poor. For optimum purification performance, please close the doors and windows when operating the air purifier.</li> <li>• There are indoor pollution resources. For instances, smoking, cooking, incense.</li> <li>• Filter reaches the end of life. Replace the filter with a new one.</li> </ul>
The appliance produces a strange smell.	<ul style="list-style-type: none"> <li>• The first few times you use the appliance, it may produce a plastic smell. This is normal. However, if the appliance produces a burnt smell even if removing the filter, contact your Philips dealer or an authorized Philips service center. The filter may produce smell after being used for a while because of the absorption of indoor gases. It's recommended that you reactivate the filter by putting it in direct sunlight for repeated use. If odor still exists, replace the filter.</li> </ul>
The appliance is extra loud.	<ul style="list-style-type: none"> <li>• Check if the packing of the filter is removed.</li> <li>• The appliance will run in high speed when the air quality is poor, which will causes higher noises. When using the appliance in a bedroom at night, choose the Sleep speed.</li> <li>• if anything drops into air outlet, it may also cause abnormal loud sounds. Immediate turn off appliance, turn appliance upside down, to get foreign objectives out of appliance.</li> </ul>
The appliance still indicates that I need to replace a filter, but I already did.	<ul style="list-style-type: none"> <li>• Perhaps you did not reset the filter lifetime counter. Switch on the appliance. Then press and hold the mode switch button (  ) for 3 seconds until  disappears.</li> </ul>
Appliance keeps off, but air quality light blinks for one minute.	<ul style="list-style-type: none"> <li>• The appliance has malfunctions. Contact the Consumer Care Center in your country.</li> </ul>

## 8 Guarantee and service

If you need information or if you have a problem, please visit the Philips website at [www.philips.com](http://www.philips.com) or contact the Philips Consumer Care Center in your country (you can find its phone number in the worldwide guarantee leaflet). If there is no Consumer Care Center in your country, go to your local Philips dealer.

---

### Order parts or accessories

If you have to replace a part or want to purchase an additional part, go to your Philips dealer or visit [www.philips.com/support](http://www.philips.com/support).

If you have problems obtaining the parts, please contact the Philips Consumer Care Center in your country (you can find its phone number in the worldwide guarantee leaflet).

## 9 Notices

---

### Electromagnetic fields (EMF)

This Philips appliance complies with all applicable standards and regulations regarding exposure to electromagnetic fields.

---

### Recycling

Do not throw away the product with the normal household waste at the end of its life, but hand it in at an official collection point for recycling. By doing this, you help to preserve the environment.

Follow your country's rules for the separate collection of electrical and electronic products. Correct disposal helps prevent negative consequences for the environment and human health.

# 內容

<b>1</b>	<b>重要事項</b>	<b>16</b>
	安全	16
<b>2</b>	<b>您的空氣清淨機</b>	<b>18</b>
	產品概覽	18
	控制項概覽	19
<b>3</b>	<b>使用空氣清淨機</b>	<b>19</b>
	瞭解空氣品質指示燈	19
	安裝濾網	20
	接上電源	20
	開關機	20
	變更模式設定	21
<b>4</b>	<b>清潔</b>	<b>21</b>
	清潔排程	21
	清潔空氣清淨機的機體	21
	清潔空氣品質感測器	22
	清潔濾網表面	22
<b>5</b>	<b>更換濾網</b>	<b>22</b>
	瞭解健康空氣保護鎖	22
	更換濾網	23
	濾網重設	23
<b>6</b>	<b>收納</b>	<b>23</b>
<b>7</b>	<b>疑難排解</b>	<b>24</b>
<b>8</b>	<b>保固與服務</b>	<b>25</b>
	訂購零件或配件	25
<b>9</b>	<b>聲明</b>	<b>25</b>
	電磁場 (EMF)	25
	回收	25

# 1 重要事項

## 安全

在使用本產品前，請先仔細閱讀本使用手冊，並保留使用手冊以供日後參考。

## 危險

- 請勿用水、其他液體，或是 (易燃) 清潔劑清潔產品，以避免觸電和 / 或火災。
- 請勿在產品周圍噴灑殺蟲劑或芳香劑等任何易燃物質。

## 警告

- 插電之前請先確認產品標示的電壓是否與當地使用的電壓相符。
- 如果電源線損壞，您必須將其交由飛利浦、飛利浦授權之服務中心，或是具備相同資格的技師進行更換，以免發生危險。
- 當轉接器、電源線或產品本身受損時，請勿使用本產品。
- 請僅使用經核准的插頭轉接器 (KA1801A-2400750US) 隨附於本產品。
- 本產品可供 8 歲以上孩童及身體、知覺或精神能力障礙者或經驗與知識缺乏者使用，但需向他們提供安全使用產品相關的監督或指示說明，且他們必須瞭解可能發生的危險。
- 請勿讓孩童把玩產品。
- 請勿阻塞進風口及出風口。
- 請勿將任何物品放在出風口上方或進風口前方。
- 確定沒有異物透過出風口掉入產品。

## 注意

- 本產品不可用來作為維持良好通風的設備、替代吸塵器清潔，或烹調時用來當作抽油煙機使用。
- 請一律將本產品放置在乾燥平穩的水平面上使用。
- 產品周圍須至少保留 20 公分的間隔距離，頂部則至少保留 30 公分的間隔距離。
- 請勿坐在或站在產品上。產品頂部請勿放置任何物品。
- 請勿將產品放置在冷氣機正下方，以免冷氣機滴水，造成產品發生水滴凝結的現象。



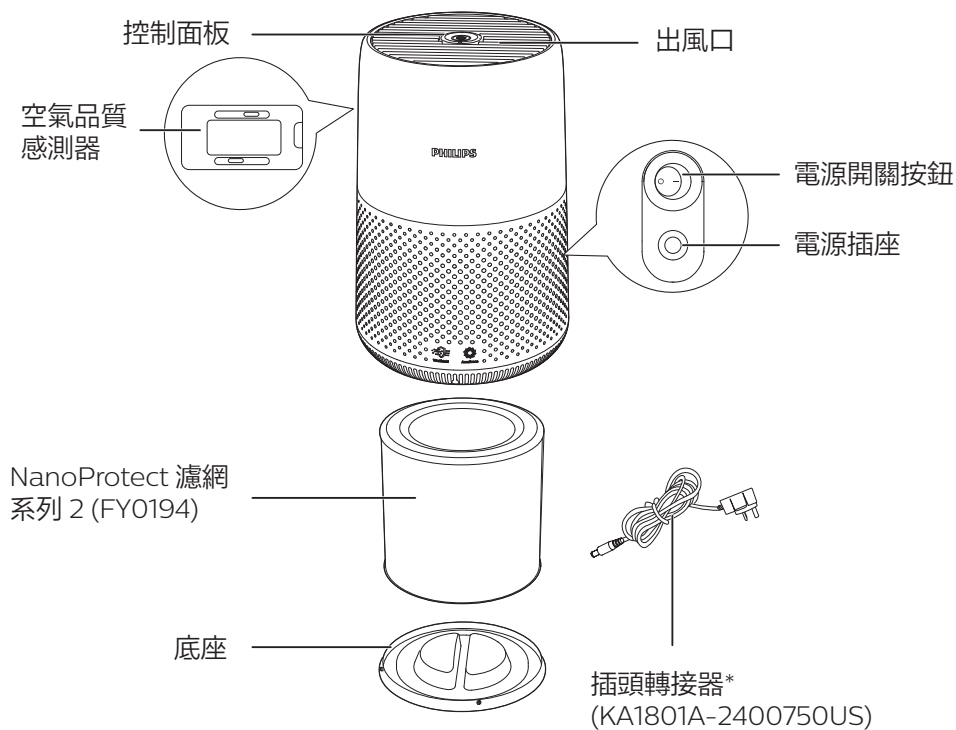
- 請僅使用產品專用的飛利浦原廠濾網。請勿使用其他濾網。
- 燃燒濾網可能會對人體造成不可逆危險和/或危及其他生命。請勿將濾網當成燃料，或以類似目的使用濾網。
- 切勿使用硬物敲打產品 (特別是進風口及出風口)。
- 請勿將手指或物體插入出風口或進風口，以避免身體受傷或損壞產品。
- 當您使用室內噴霧式驅蟲劑或在充滿油漬、燒香或化學煙霧的地方時，請勿使用本產品。
- 請勿在燃氣設備、加熱裝置或壁爐附近使用本產品。
- 在您要移動、清潔產品、更換濾網或進行其他維護前，請務必先關閉空氣清淨機的電源，然後從電源插座拔下轉接器插頭。
- 本產品為家用產品，僅限於在正常操作環境下使用。
- 請勿在潮濕環境或周遭溫度很高的環境下使用本產品，例如浴室、廁所、廚房，或溫差變化極大的室內。
- 本產品無法清除一氧化碳 (CO) 或氫氣 (H<sub>2</sub>)。發生燃燒意外及危險化學物品意外時，本產品無法當作安全裝置使用。

## 2 您的空氣清淨機

感謝您購買本產品。歡迎來到飛利浦的世界！

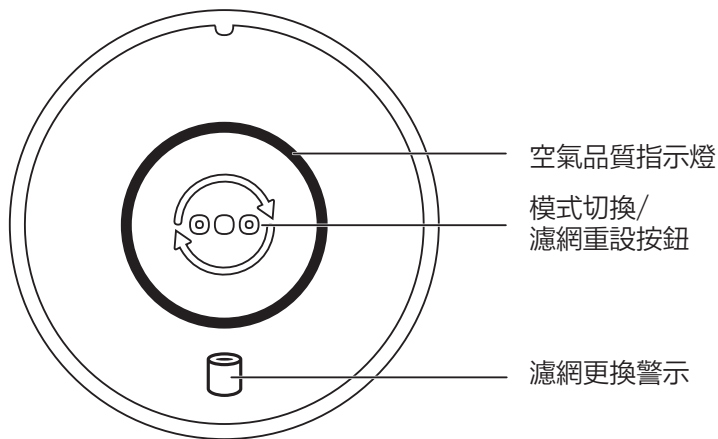
若要獲得飛利浦提供的完整支援，請註冊您的產品：[www.philips.com/welcome](http://www.philips.com/welcome)。

### 產品概覽



\*請僅使用隨附的插頭轉接器。

## 控制項概覽



## 3 使用空氣清淨機

### 瞭解空氣品質指示燈

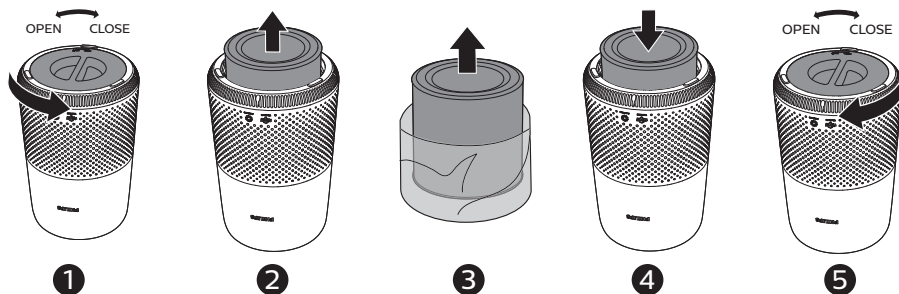
空氣品質指示燈的顏色會對應環境空氣品質。  
空氣品質指示燈的亮度會反映出目前的運作模式。

PM2.5 等級	空氣品質指示燈顏色	空氣品質等級
≤12	藍色	良好
13-35	藍紫色	普通
36-55	紫紅色	不佳
>55	紅色	非常差

## 安裝濾網

使用前，請先拆下濾網所有包裝材料。

備註：請確定已從電源插座拔除空氣清淨機的電源插頭後，再安裝濾網。



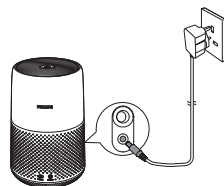
- 1 逆時針旋轉底座，將其從產品上取下。
- 2 從產品拉出濾網。
- 3 拆下空氣淨化濾網的所有包裝材料。
- 4 將濾網裝回產品。
- 5 裝回底座，並順時針方向旋轉，以固定底座。

## 接上電源

備註：有觸電危險！拔下 AC 電源線時，務必握住插頭，自插孔拔下。切勿拉扯電源線。

連接電源變壓器到：

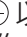

- 先連接到產品的電源插座。
- 再連接到電源插座。




## 開關機

備註：

- 為達最佳淨化效能，請關閉門窗。

- 1 按下空氣清淨機背面的電源按鈕  以開啟電源。  
↳ 空氣清淨機預設以自動模式運作。
- 2 再次按下電源  按鈕以關閉空氣清淨機電源。

## 變更模式設定

按下模式切換按鈕  即可選擇自動模式、超高速模式或睡眠模式。空氣品質指示燈的亮度會反映出目前的運作模式：

- 睡眠模式 - 最低亮度
- 自動模式 - 中等亮度
- 超高速模式 - 最高亮度

### 自動模式

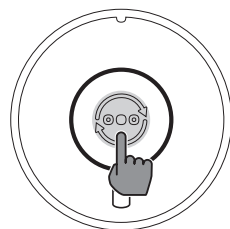
在自動模式下，產品會依照周遭空氣品質選擇適當的風速。

### 超高速模式

在超高速模式下，空氣清淨機會以最高速度運作。

### 睡眠模式

在睡眠模式中，空氣清淨機會以低速安靜地運作。



## 4 清潔

備註：

- 切勿使用漂白劑或酒精等具磨蝕性、刺激性或易燃性的洗劑清潔產品的任何部分。

## 清潔排程

頻率	清潔方法
必要時	用柔軟的乾布擦拭產品表面
	清潔空氣出風口護蓋
每兩個月	使用乾棉棒清潔空氣品質感測器
每四週	清潔濾網表面

## 清潔空氣清淨機的機體

定期清潔空氣清淨機的內部與外殼，可避免累積灰塵。

- 1 使用柔軟乾布清潔空氣清淨機的內外部。
- 2 出風口亦可使用柔軟乾布清潔。

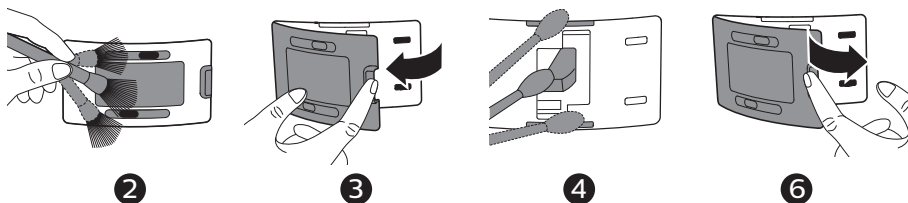
## 清潔空氣品質感測器

每兩個月清潔空氣品質感測器，使產品發揮最佳功效。

備註：

- 若在佈滿灰塵的環境中使用空氣清淨機，可能需要更常清潔。
- 若房間溼度過高，空氣品質感測器可能有水滴凝結，在這種情況下，縱使空氣品質良好，空氣品質指示燈也可能指示空氣品質不佳。若發生此種情形，請清潔空氣品質感測器，或依手動風速設定使用本空氣清淨機。

1 關閉空氣清淨機的電源，從電源插座拔掉插頭。



2 使用軟刷清潔空氣品質感測器的進風口和出風口。

3 打開空氣品質感測器的護蓋。

4 請使用溼棉棒清潔空氣品質感測器、覆有灰塵的進風口和出風口。

5 使用乾棉棒擦乾所有零件。

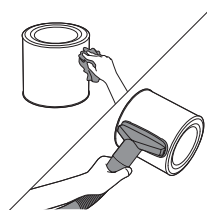
6 重新裝上空品質感測器的護蓋。

## 清潔濾網表面

以柔軟的溼布擦拭濾網表面，或使用吸塵器清潔濾網表面。

備註：

- 如果您使用高功率 / 工業用吸塵器，可能會損壞濾網。



## 5 更換濾網

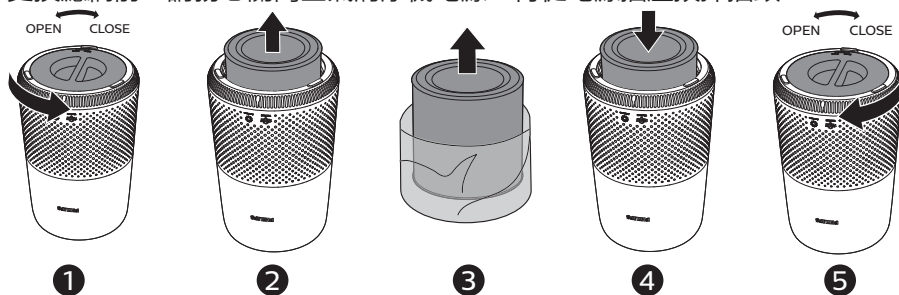
### 瞭解健康空氣保護鎖

本產品配備健康空氣保護鎖功能，可確保 NanoProtect 濾網在產品運作時處於最佳狀態。當濾網即將過期時，濾網更換警示 ( ) 會亮起紅色，表示需要更換。如果您未及時更換濾網，濾網更換警示 ( ) 會閃爍。產品將停止運作並上鎖。

## 更換濾網

備註：

- 濾網不可水洗或重複使用。
- 更換濾網前，請務必關閉空氣清淨機電源，再從電源插座拔掉插頭。



- 1 逆時針旋轉底座，將其從產品上取下。
- 2 從產品拉出濾網。丟棄用過的濾網。
- 3 拆下新濾網的所有包裝材料。
- 4 將濾網裝至產品。
- 5 裝回底座，並順時針方向旋轉，以固定底座。
- 6 將空氣清淨機的插頭插入電源插座。
- 7 按下電源 按鈕 以開啟產品電源。
- 8 按住 3 秒鐘，可重設濾網使用壽命計時器。
- 9 清潔濾網後請徹底清洗雙手。

## 濾網重設

您甚至可以在螢幕上出現濾網更換警示 () 之前更換濾網。更換濾網後，您需要手動重設濾網使用壽命計時器。

- 1 按下電源按鈕 以開啟產品電源。
- 2 電源開啟後 10 秒內，按住模式切換按鈕 5 秒鐘，可重設濾網使用壽命計時器。

## 6 收納

- 1 關閉空氣清淨機的電源，從電源插座拔掉插頭。
- 2 清潔空氣清淨機、空氣品質感測器和濾網表面 (請參閱「清潔」單元)。
- 3 收納之前，請確保所有零件徹底風乾。
- 4 將濾網包在氣密塑膠袋中。
- 5 將空氣清淨機和濾網存放在涼爽乾燥處。
- 6 接觸過濾網後，請務必徹底清洗雙手。

## 7 疑難排解

本單元概述您使用本產品時可能遇到的最常見問題。如果您無法利用以下資訊解決您遇到的問題，請聯絡您所在國家/地區的客戶服務中心。

問題	可能的解決方法
產品即使已插電也無法運作。	<ul style="list-style-type: none"><li>濾網更換警示亮起，但未更換相應濾網。結果導致產品鎖定。在此情況下，請更換濾網並重設濾網使用壽命計數器。</li></ul>
出風口流出的風速比之前慢很多。	<ul style="list-style-type: none"><li>濾網表面髒汙。清潔濾網表面 (請參閱「清潔」單元)。</li></ul>
即使產品已經長時間運作，空氣品質仍未獲得改善。	<ul style="list-style-type: none"><li>請檢查是否已拆下濾網的包裝材料。</li><li>請確認濾網已正確安裝。</li><li>空氣品質感測器髒汙或潮溼。清潔空氣品質感測器 (請參閱「清潔」單元)。</li><li>房間很大，或戶外空氣品質不佳。為獲得最佳淨化效能，請在操作空氣清淨機時關閉門窗。</li><li>有室內汙染源。例如吸菸、烹飪、薰香。</li><li>濾網使用壽命已盡。更換新的濾網。</li></ul>
使用產品時發出異味。	<ul style="list-style-type: none"><li>使用本產品的前幾分鐘，可能會產生塑膠味。此為正常現象。然而，如果取下濾網後產品依然發出焦味，請聯絡您的飛利浦經銷商或授權的飛利浦服務中心。使用一段時間之後，濾網可能會因為吸收室內氣體而產生異味。建議將濾網拿到陽光下曝曬以供重複使用。如果異味仍然存在，請更換濾網。</li></ul>
產品噪音太大。	<ul style="list-style-type: none"><li>檢查濾網包裝是否已拆下。</li><li>空氣品質不佳時，本產品會高速運轉，進而產生較高的噪音。夜間在臥室使用產品時，請選擇睡眠速度。</li><li>如果有任何東西掉入出風口，可能也會造成異常大的聲響。立即關閉產品電源，將產品上下顛倒放置，從產品中取出異物。</li></ul>
產品不斷指示需更換濾網，但濾網已經更換了。	<ul style="list-style-type: none"><li>您或許未重設濾網使用壽命計時器。開啟產品。然後按住模式切換按鈕 (⊙) 3 秒鐘，直到 ⊙ 消失。</li></ul>
產品會保持關閉，但空氣品質指示燈會閃爍一分鐘。	<ul style="list-style-type: none"><li>產品故障。請聯絡您所在國家/地區的客戶服務中心。</li></ul>



## 8 保固與服務

如果您需要更多資訊或有任何問題，請造訪飛利浦網站 [www.philips.com](http://www.philips.com) 或聯絡您所在國家/地區的飛利浦客戶服務中心 (您可在全球保證書上找到電話號碼)。若您所在國家/地區沒有客戶服務中心，請洽詢當地的飛利浦經銷商。

---

### 訂購零件或配件

如果您必須更換零件或想購買其他零件，請聯絡您的飛利浦經銷商，或造訪 [www.philips.com/support](http://www.philips.com/support)。

如果您有取得零件方面的問題，請聯絡您所在國家/地區的飛利浦客戶服務中心 (您可在全球保證書上找到電話號碼)。

## 9 聲明

---

### 電磁場 (EMF)

本飛利浦產品符合所有電磁場暴露的相關適用標準和法規。

---

### 回收

產品使用壽命結束時，請勿與一般家庭廢棄物一併丟棄。請將該產品送至政府指定的回收點進行回收。此舉能為環保盡一份心力。

請遵循您所在國家/地區對電氣與電子產品分類收集的規定。正確處理廢棄產品有助於避免對環境和人類健康帶來負面影響。

設備名稱：飛利浦空氣清淨機，型號（型式）：AC0819 Equipment name Type designation (Type)						
單元 Unit	限用物質及其化學符號 Restricted substances and its chemical symbols					
	鉛 Lead (Pb)	汞 Mercury (Hg)	鎘 Cadmium (Cd)	六價鉻 Hexavalent chromium (Cr <sup>+6</sup> )	多溴聯苯 Polybrominated biphenyls (PBB)	多溴二苯醚 Polybrominated diphenyl ethers (PBDE)
電源供應器	-	○	○	○	○	○
塑膠外殼	○	○	○	○	○	○
電路板組件	-	○	○	○	○	○
電動機	-	○	○	○	○	○
電源開關	-	○	○	○	○	○

備考1：“超出0.1 wt %”及“超出0.01 wt %”係指限用物質之百分比含量超出百分比含量基準值。  
Note 1: “Exceeding 0.1 wt %” and “exceeding 0.01 wt %” indicate that the percentage content of the restricted substance exceeds the reference percentage value of presence condition.

備考2：“○”係指該項限用物質之百分比含量未超出百分比含量基準值。  
Note 2: “○” indicates that the percentage content of the restricted substance does not exceed the percentage of reference value of presence.

備考3：“-”係指該項限用物質為排除項目。  
Note 3: The “-” indicates that the restricted substance corresponds to the exemption.





© 2021 Philips Domestic Appliances Holding B.V.  
All rights reserved.

3000 059 53641

