

Warranty and service

If you need any information or in case of any problem please contact your local Philips dealer or authorized service center. For the list of authorized Philips service centers, please visit the Philips website at <https://www.philips.co.in/c-w/support-home>

Warranty

This apparatus is warranted against any defect due to defective materials or workmanship for **TWO YEARS** from the date of purchase, should a defect develop during the period of warranty, PHILIPS INDIA LTD. undertakes to repair the apparatus **FREE OF CHARGE** through the dealer from whom it has been purchased or at any of the Philips authorised service centres.

The warranty is not valid in case :

1. The apparatus is not used according to the user manual.
2. Defects are caused by improper or reckless use.
3. Any repairs are done by persons other than Philips Authorised service centre.
4. Modifications of any nature are made in the apparatus.
5. The serial number is tampered with.
6. The warranty card is not completed immediately after purchase.
7. The product is used for commercial purpose (i.e. other than domestic use).

All consumables and parts susceptible to normal wear and tear are not covered under warranty.

Week/S.No.:

Date of purchase: _____

Dealer's name: _____

Dealers stamp: _____

Customer's name and address: _____

Model No.: _____

Dealer's signature: _____

Technical specifications

Model No.	Voltage	Wattage	Soleplate
GC2145	230 V 50 Hz AC	2200 W	Ceramic Coating
GC2147	240 V 50 Hz AC	2400 W	Ceramic Coating

Contact Customer Service for Sales/ Service Support

1800 102 2929 (Toll free)
1860 180 1111 "Standard call rates apply"
e-mail: customercare.india@philips.com

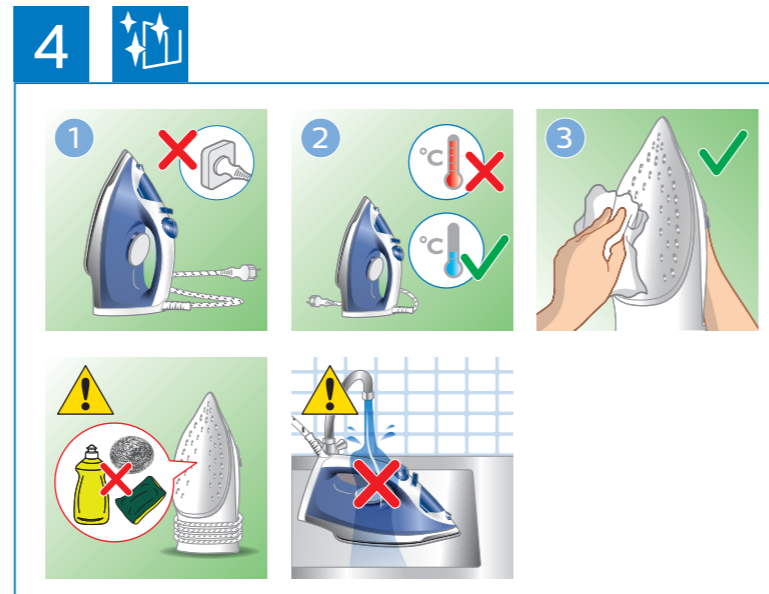
Registered Office

PHILIPS INDIA LIMITED,
3rd floor, Tower A, DLF IT Park, 08 Block AF, Major Arterial Road,
New Town (Rajarhat), Kolkata – 700156, West Bengal

Question?
Contact
Philips

Always there to help you

Visit us at www.india.philips.com
Contact at: 1860 180 1111, 1800 102 2929
Standard call rates apply
Or customercare.india@philips.com



*Use Calc Clean function once every 1 month to prolong the life of your iron. Hold slider at **CALC CLEAN** position and shake the iron until all water flows out (figure 9).

PHILIPS

GC2145
GC2147



User manual

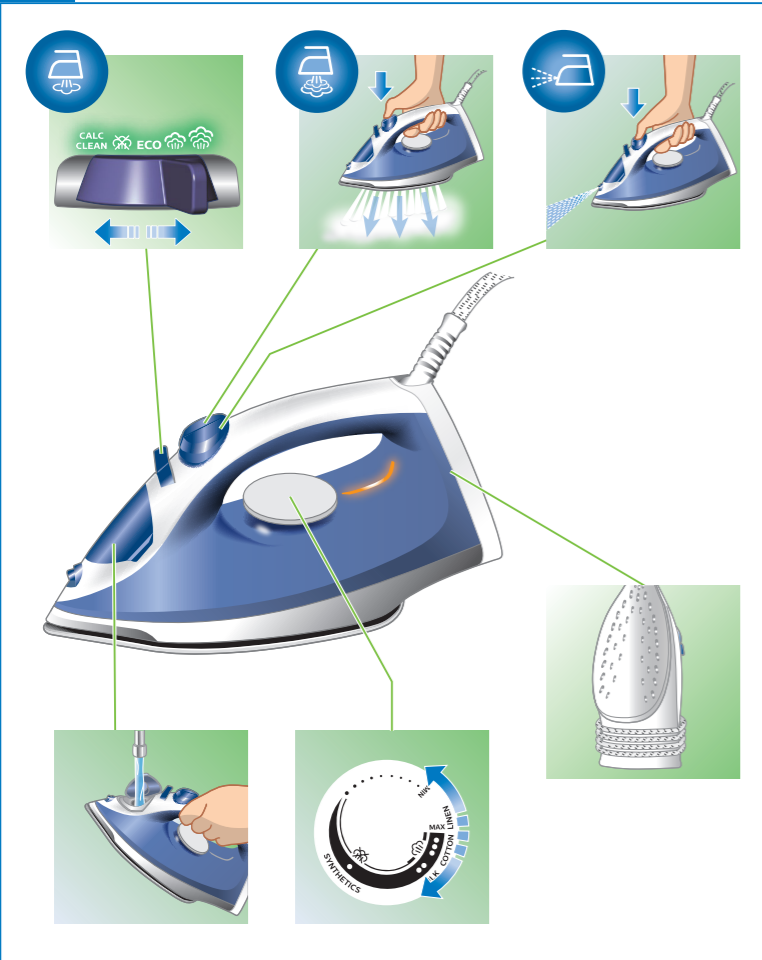


©2019 Koninklijke Philips N.V.
All rights reserved.
4239 001 17551



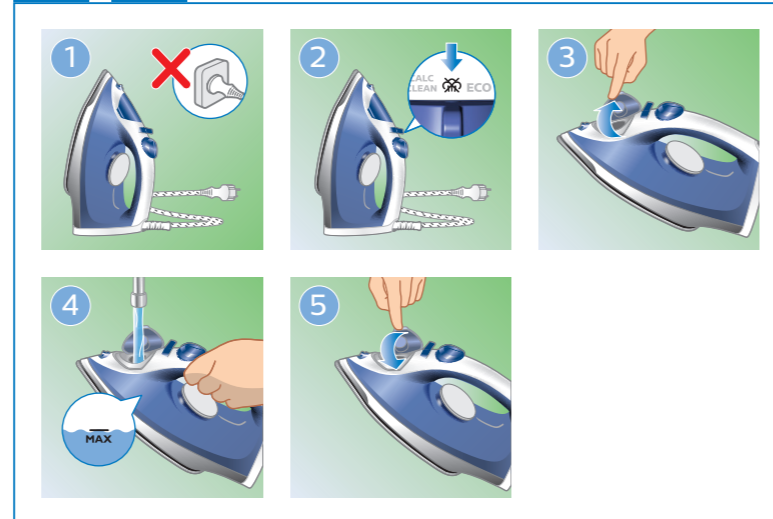


<https://www.philips.co.in/c-w/support-home>



EN To fully benefit from the support that Philips offers, register your product at <https://www.philips.co.in/myphilips/login.html>. Read this user manual carefully before you use the appliance.

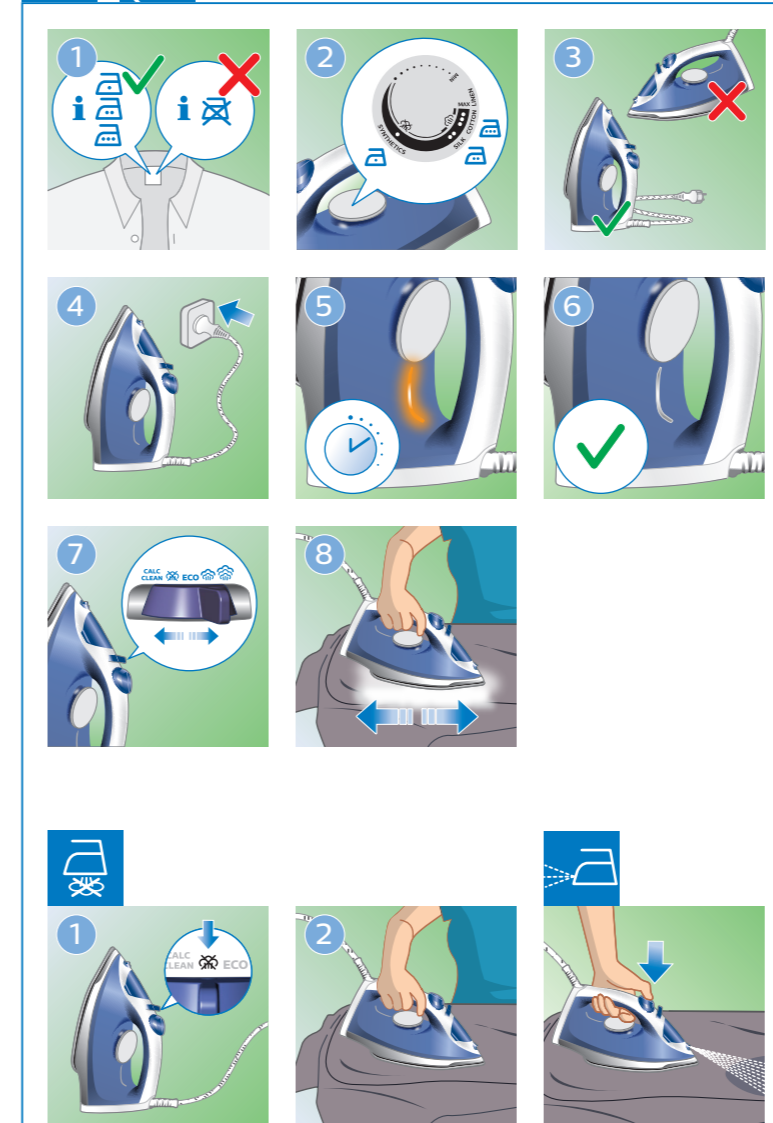
1



2

Fabric		
Linen	MAX LINEN	
Cotton	COTTON	
Silk	SILK	ECO
Synthetic	SYNTHETICS	

2



2



3

