

**General description (fig. 1)**

- A** Temperature control dial
- B** Steam control dial
  - = no steam
  - △ = moderate steam
  - ▲ = maximum steam
  - \* = Calc-Clean function
- C** Spray button
- D** Spray nozzle (types GC1121, GC1120, GC1115 and GC1015)
- E** Temperature pilot light
- F** Water filling opening
- G** Water tank
- H** Type plate
- I** Cord
- J** Extra Steam function (press steam control dial) (type GC1121 and GC1120)

**Important**

- For optimal safety, read these instructions carefully and look at the illustrations before you start using the appliance.
- Keep these instructions for future reference.
- Never leave the iron unattended when it is connected to the mains.
- This appliance is not intended for use by children.
- Keep an eye on children to make sure that they do not play with the appliance.
- The soleplate of the iron can become extremely hot and may cause burns if touched.
- Never use the appliance if it is damaged in any way.
- When you have finished ironing, when you clean the appliance, when you fill or empty the water tank and also when you leave the iron even for a short while: set the steam control to position O, put the iron on its heel and remove the mains plug from the wall socket.
- If the supply cord is damaged, it must be replaced by a special cord or assembly available from Philips or a service agent.
- Check if the voltage indicated on the type plate corresponds to the local mains voltage before you connect the appliance.

**Before first use**

- 1 Remove sticker or protective foil from the soleplate if there is any.
- 2 Heat up the iron to the maximum temperature and pass the iron over a piece of damp cloth for several minutes to remove any residues from the soleplate.

The iron may give off some smoke when you use it for the first time. This will cease after a short while.

**Filling the water tank**

Never immerse the iron in water.

- 1 Remove the mains plug from the wall socket.
- 2 Set the steam control to position O (= no steam) (fig. 2).
- 3 Tilt the iron backwards.
- 4 Fill the water tank with cold tap water up to the maximum level (fig. 3).

Do not fill the water tank beyond the MAX indication.

Only use water. Do not use vinegar, starch, ironing concentrates or chemically descaled water.

If the tap water in your area is very hard, we advise you to mix it with an equal amount of distilled water or to use distilled water only.

**Setting the temperature**

- 1 Put the iron on its heel.
- 2 Check the garment label for the required ironing temperature:
  - Synthetic fabrics (e.g. acrylic, viscose, polyamide, polyester)
  - Silk
  - Wool
  - Cotton, linen

If you do not know what kind of fabric(s) a garment is made of, determine the right ironing temperature by ironing a part that will be invisible when you wear the garment.

Silk, woollen and synthetic materials: iron the reverse side of the fabric to prevent shiny patches. Avoid using the spray function to prevent stains.

Start ironing the articles that require the lowest ironing temperature, such as those made of synthetic fibres.

- 3 Set the temperature control dial to the required ironing temperature by turning it to the appropriate temperature indication (fig. 4).
- 4 Put the mains plug in an earthed wall socket.
- 5 When the temperature pilot light has gone out, wait a while before you start ironing (fig. 5).

The pilot light will go on from time to time during ironing.

**Steam ironing**

- 1 Make sure that there is enough water in the water tank.
- 2 Set the temperature control dial to the recommended position. See 'Setting the temperature'.
- 3 After the temperature pilot light has gone out, set the steam control to the appropriate steam position (fig. 6).
  - △ for moderate steam (temperature settings ●● to MAX)
  - ▲ for maximum steam (temperature settings ●●● to MAX)

The iron will start producing steam as soon as the set temperature has been reached.

**Ironing without steam**

- 1 Set the steam control dial to position O (= no steam).
- 2 Set the temperature control dial to the recommended position. See 'Setting the temperature'.

**Other features**  
Spray function (Types GC1121, GC1120, GC1115, and GC1015).

To remove stubborn creases at any temperature

- Make sure there is enough water in the water tank.
- 1 Press the spray button several times to moisten the article to be ironed (fig. 7).

Extra Steam (Type GC1121 and GC1120).

This function provides extra steam to remove very stubborn creases.

- The Extra Steam function only works at temperature settings between ●●● and MAX.

- 1 Set the steam control dial to the maximum position w (fig. 8).
- 2 Press and hold the steam control dial for maximal 5 seconds (fig. 9).
- 3 Release the steam control dial and wait at least 1 minute before using this function again to prevent water from dripping out of the soleplate.

**Cleaning and maintenance**  
Calc-Clean function

The Calc-Clean function removes scale and impurities.

Use the Calc-Clean function once every two weeks. If the water in your area is very hard (i.e. when flakes come out of the soleplate during ironing), you should use the Calc-Clean function more frequently.

- 1 Set the steam control dial to position O.
- 2 Set the temperature control dial to MAX.
- 3 Fill the water tank to the maximum level.

Do not pour vinegar or other descaling agents into the water tank.

- 4 Put the plug in the wall socket.
- 5 Unplug the iron when the temperature pilot light has gone out.
- 6 Hold the iron over the sink and set the steam control to the Calc-Clean position \* (fig. 10).
- 7 Pull the steam control dial slightly upwards and gently shake the iron until all water in the tank has been used up. Steam and boiling water will come out of the soleplate, flushing out impurities and scale.
- 8 Press the steam control dial back to its original position and set it to position O after having used the Calc-Clean function.
- 9 Repeat the Calc-Clean process if the iron still contains a lot of impurities.
- 10 To clean the steam control needle, pull the steam control out of the appliance (fig. 11). Use vinegar to remove scale, if any, from the needle (fig. 12).

Do not bend or damage the steam control needle.

- 11 Reinsert the steam control needle by placing the point of the needle exactly in the centre of the hole and by fitting the small projection on the side of the needle into the slot (fig. 13).
- 12 Set the steam control to position O.

After the Calc-Clean process

- 1 Connect the iron to the mains to let the soleplate dry.
- 2 Unplug the iron when the pilot light has gone out.
- 3 Move the iron gently over a piece of used cloth to remove any water stains that may have formed on the soleplate.
- 4 Let the iron cool down before you store it.

Cleaning after ironing

- 1 Make sure the plug has been removed from the wall socket and the iron has cooled down.
- 2 Wipe scale and any other deposits off the soleplate with a damp cloth and a non-abrasive (liquid) cleaner. Keep the soleplate smooth: avoid contact with metal objects.
- 3 Clean the upper part of the appliance with a damp cloth.
- 4 Regularly rinse the water tank with water. Empty the water tank after cleaning.

**Storage**

- 1 Make sure the plug has been removed from the wall socket and the iron has cooled down. Set the steam control to position O.
- 2 Empty the water tank (fig. 14).
- 3 Wind the mains cord round the cord storage facility.
- 4 Store the iron standing on his heel in a safe and dry place (fig. 15).

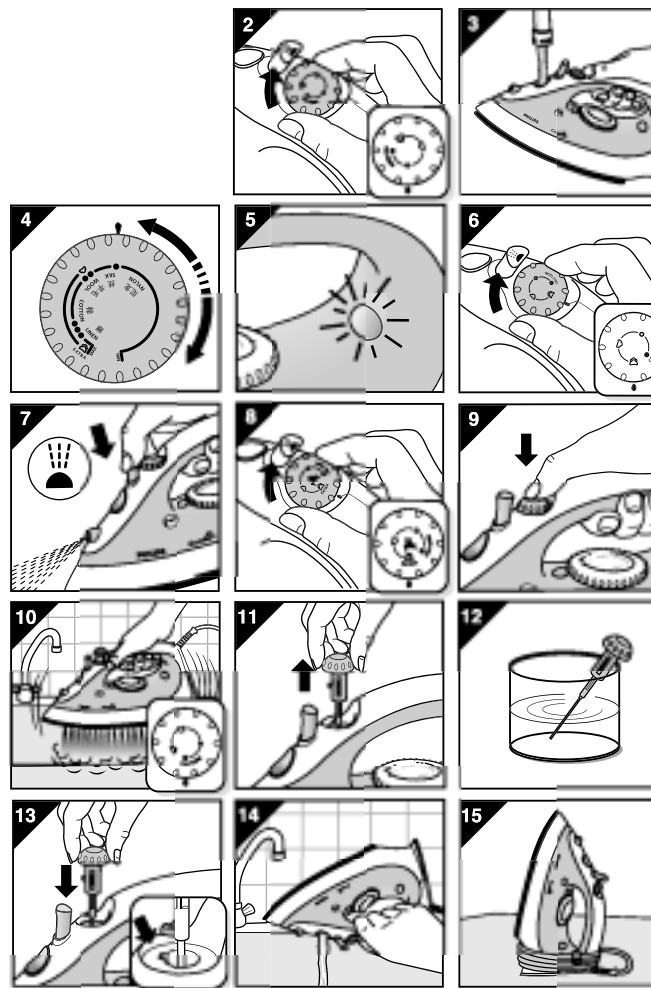
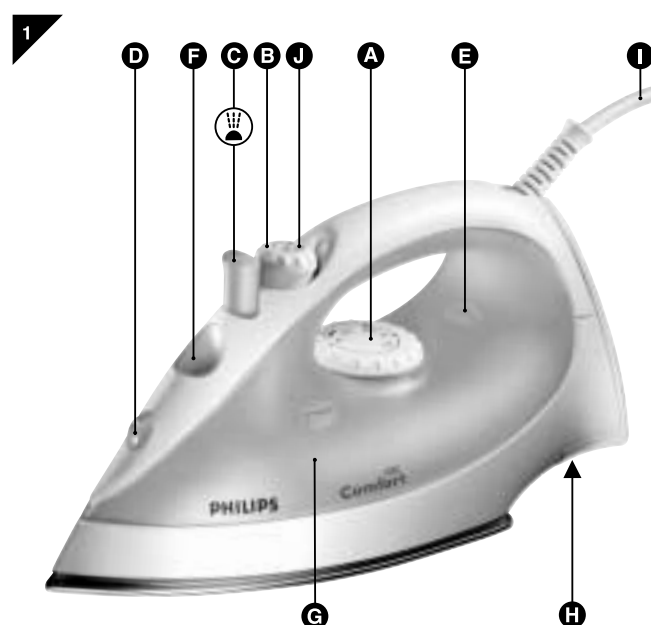
**Information & service**

If you need information or if you have a problem, please visit the Philips Web site at [www.philips.com](http://www.philips.com) or contact the Philips Customer Care Centre in your country (you will find its phone number in the worldwide guarantee leaflet). If there is no Customer Care Centre in your country, turn to your local Philips dealer or contact the Service Department of Philips Domestic Appliances and Personal Care BV.

**Troubleshooting**

This chapter summarises the most common problems you could encounter with your iron. Please read the different sections for more details. If you are unable to solve the problem, please contact the Philips Customer Care Centre in your country. You can find its telephone number in the worldwide guarantee leaflet.

Problem	Possible cause(s)	Solution(s)
The iron is plugged in but the soleplate is cold.	There is a connection problem.	Check if the plug is connected to the wall socket properly.
	The temperature control dial has been set to MIN.	Set the temperature control dial to the required temperature.
The iron does not produce any steam.	There is not enough water in the water tank.	Fill the water tank (see 'Filling the water tank').
	The steam control dial has been set to position O.	Set the steam control dial to position △ or ▲ (see 'Steam ironing').
	The iron is not hot enough.	Set the temperature control dial to a temperature suitable for steam ironing (●● to MAX). Put the iron on its heel and wait until the pilot light has gone out before you start ironing.
The Extra Steam function does not work (type GC1121 and GC1120)	The steam control dial has not been pressed long enough.	Press and hold the steam control dial for maximal 5 seconds.
	The Extra Steam function has been used too often in a short period.	Wait at least 1 minute before using the Extra Steam function again.
	The iron is not hot enough.	Set the temperature control dial to a temperature between ●●● and MAX. Put the iron on its heel and wait until the pilot light has gone out.



Problem	Possible cause(s)	Solution(s)
	There is not enough water in the water tank.	Fill the water tank (see 'Filling the water tank').
Water leaks from the soleplate when I use the Extra Steam function (type GC1120)	The iron is not hot enough.	Set the temperature control dial to a temperature between ●●● and MAX. Put the iron on its heel and wait until the pilot light has gone out.
	The Extra Steam function has been used too often in a short period.	Wait at least 1 minute before using the Extra Steam function again (see 'Extra Steam').
The spray function does not work (types GC1121, GC1120, GC1115 and GC1015)	There is not enough water in the water tank.	Fill the water tank (see 'Filling the water tank').
Flakes and impurities come out of the soleplate during ironing.	You have been using hard water, which has caused scale flakes to develop inside the soleplate.	Use the Calc-Clean function a few times (see 'Calc-Clean').
Water leaks from the soleplate during ironing.	The set temperature is too low.	Set the temperature control dial to a temperature suitable for steam ironing (●● to MAX). Put the iron on its heel and wait until the pilot light has gone out before you start ironing.
Water leaks from the soleplate while the iron is cooling down or after it has been stored.	The iron has been put in horizontal position while there is still water in the water tank.	Empty the water tank and set the steam control to position O before storing the iron (see 'Storage'). Place the iron on its heel.



Comfort  
GC1121, GC1120, GC1115, GC1110, GC1015, GC1010

