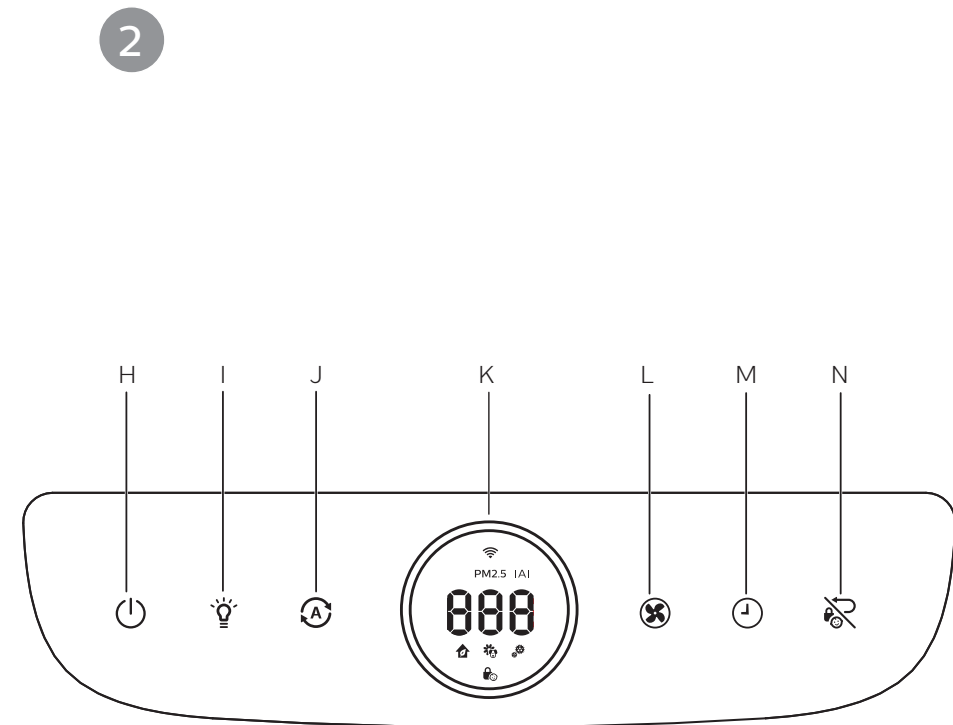
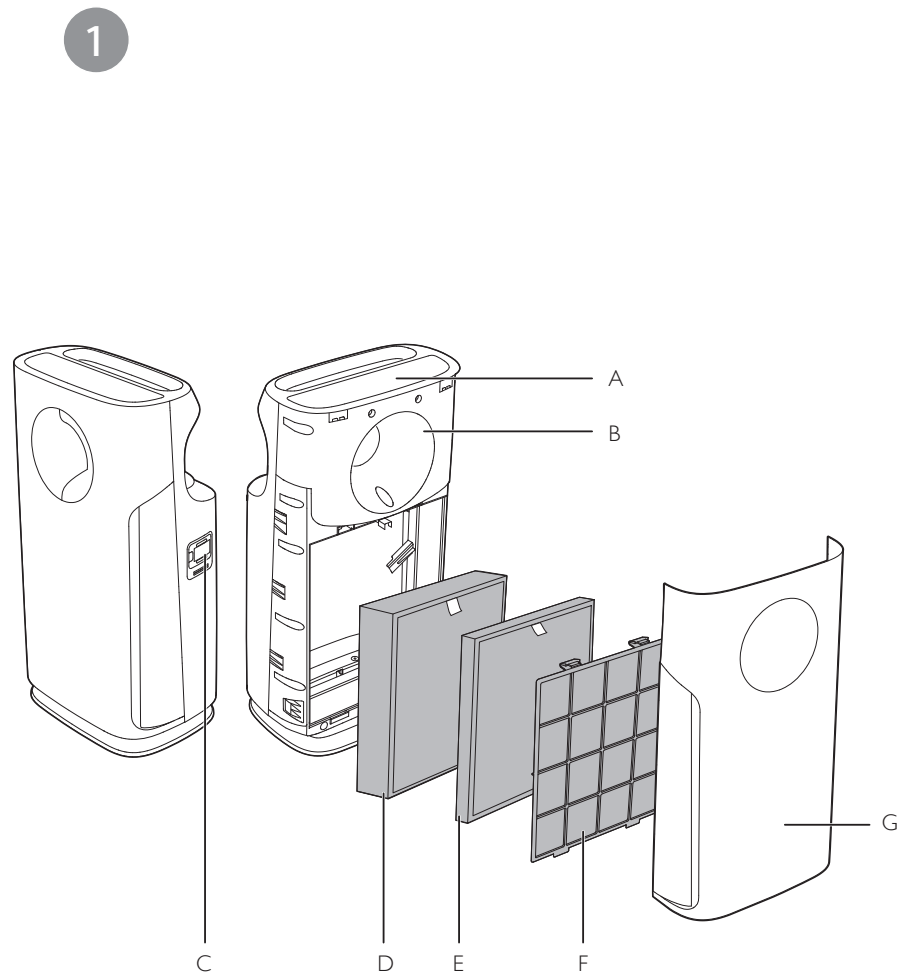
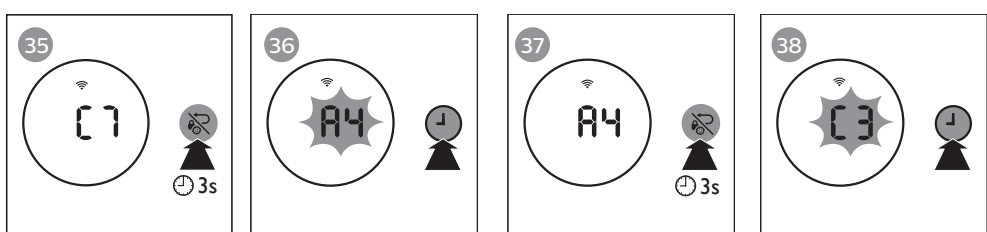
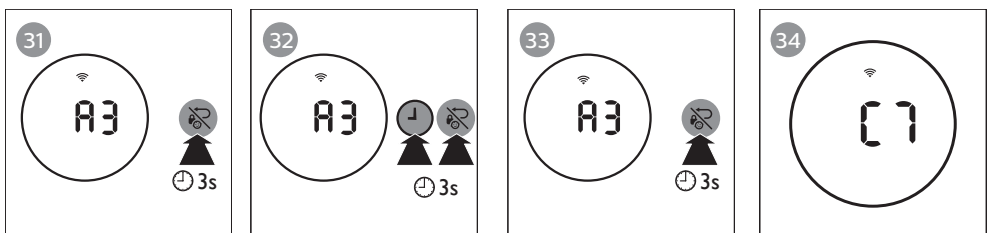
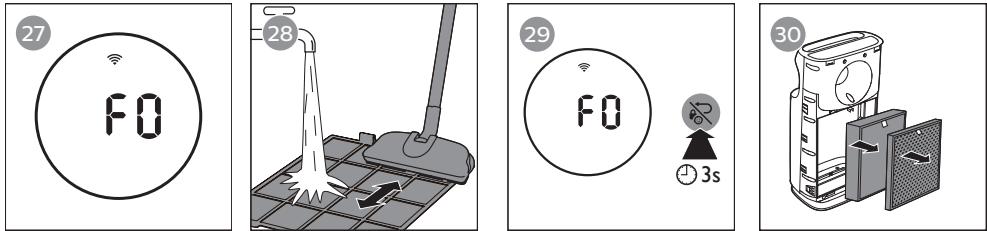
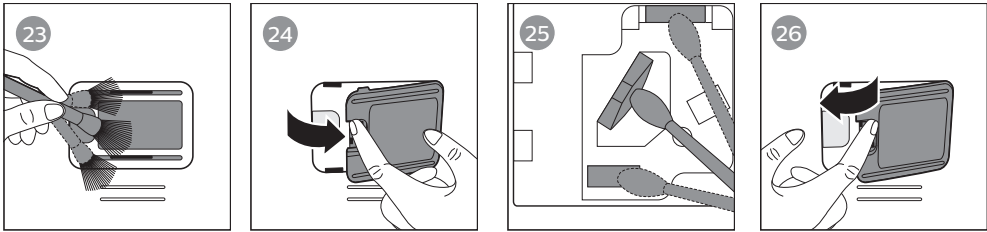
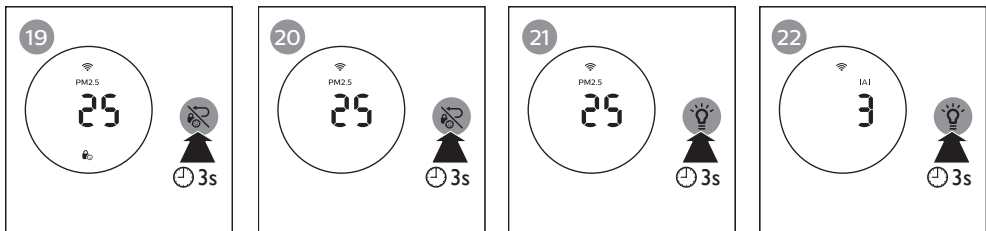
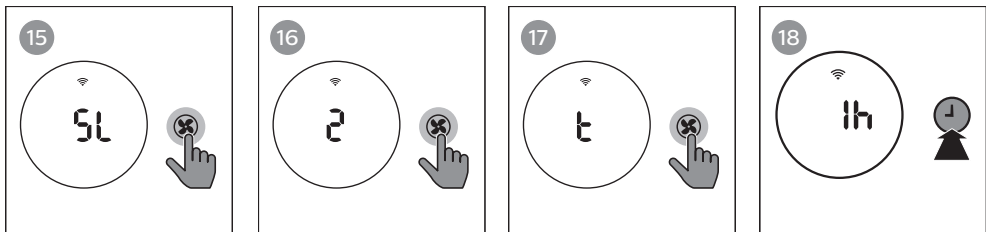
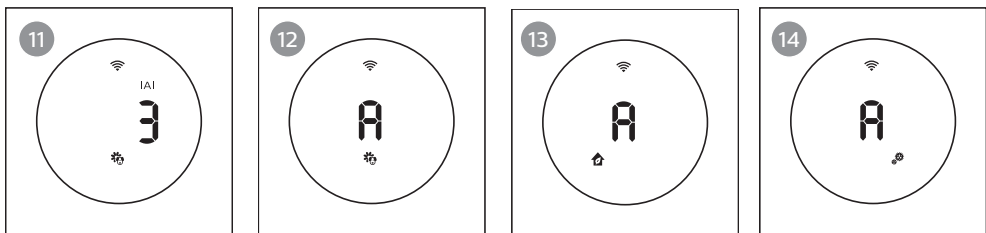
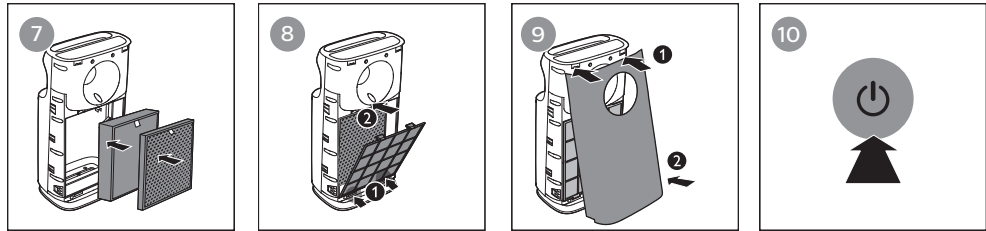
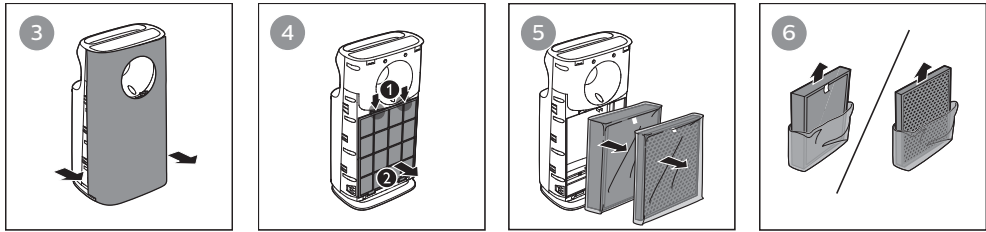




**PHILIPS**  
AC3259





# Contents

<b>1 Important</b>	<b>2</b>	<b>6 Replacing the filter</b>	<b>11</b>
Safety	2	Understanding the healthy air protect lock	11
<b>2 Your air purifier</b>	<b>5</b>	Replacing the filters	11
Product overview (fig. ①)	5	Filter lifetime counter reset	12
Controls overview (fig. ②)	5	Filter type change	12
<b>3 Getting started</b>	<b>5</b>	<b>7 Troubleshooting</b>	<b>13</b>
Installing filters	5	<b>8 Guarantee and service</b>	<b>16</b>
Wi-Fi connection	6	Order parts or accessories	16
<b>4 Using the appliance</b>	<b>7</b>	<b>9 Notices</b>	<b>16</b>
Understanding the air quality light	7	Electromagnetic fields (EMF)	16
Switching on and off	7	Recycling	17
Changing the Auto mode setting	7	Software	17
Changing the fan speed	8		
Setting the timer	8		
Setting the child lock	8		
Using the light on/off function	9		
Switching the display mode	9		
<b>5 Cleaning</b>	<b>9</b>		
Cleaning schedule	9		
Cleaning the body of the appliance	9		
Cleaning the air quality sensor	10		
Cleaning the pre-filter	10		

Environmental friendly paper used. Thanks for your contribution to save trees.

# 1 Important

---

## Safety

Read this user manual carefully before you use the appliance, and save it for future reference.

### Danger

- Do not let water or any other liquid or flammable detergent enter the appliance to avoid electric shock and/or a fire hazard.
- Do not clean the appliance with water, any other liquid, or a (flammable) detergent to avoid electric shock and/or a fire hazard.
- Do not spray any flammable materials such as insecticides or fragrance around the appliance.

### Warning

- Check if the voltage indicated on the appliance corresponds to the local power voltage before you connect the appliance.

- If the power cord is damaged, you must have it replaced by Philips, a service center authorized by Philips, or similarly qualified persons in order to avoid a hazard.
- Do not use the appliance if the plug, the power cord, or the appliance itself is damaged.
- This appliance can be used by children aged from 8 years and above and persons with reduced physical, sensory or mental capabilities or lack of experience and knowledge if they have been given supervision or instruction concerning use of the appliance in a safe way and understand the hazards involved. Child shall not play with the appliance. Cleaning and maintenance shall not be made by children without supervision.
- Do not block the air inlet and outlet, e.g. by placing items on the air outlet or in front of the air inlet.

- Make sure that foreign objects do not fall into the appliance through the air outlet.
- Standard WiFi interface based on 802.11b/g/n at 2.4 GHz with a maximum output power of 31.62 mW EIRP.

### Caution

- This appliance is not a substitute for proper ventilation, regular vacuum cleaning, or use of an extractor hood or fan while cooking.
- If the power socket used to power the appliance has poor connections, the plug of the appliance becomes hot. Make sure that you plug the appliance into a properly connected power socket.
- Always place and use the appliance on a dry, stable, level, and horizontal surface.
- Leave at least 20cm free space behind and on both sides of the appliance and leave at least 30cm free space above the appliance.
- Do not place anything on top of the appliance.
- Do not sit or stand on the appliance. Sitting or standing on the appliance may lead to potential injury.
- Do not place the appliance directly below an air conditioner to prevent condensation from dripping onto the appliance.
- Make sure all filters are properly installed before you switch on the appliance.
- Only use the original Philips filters specially intended for this appliance. Do not use any other filters.
- Combustion of the filter may cause irreversible human hazard and/or jeopardize other lives. Do not use the filter as fuel or for similar purpose.
- Avoid knocking against the appliance (the air inlet and outlet in particular) with hard objects.

- Always lift or move the appliance by the handle on top of the appliance.
- Do not insert your fingers or objects into the air outlet or the air inlet to prevent physical injury or malfunctioning of the appliance.
- Do not use this appliance when you have used indoor smoke-type insect repellents or in places with oily residues, burning incense, or chemical fumes.
- Do not use the appliance near gas appliances, heating devices or fireplaces.
- Always unplug the appliance after use and before cleaning or carrying out other maintenance.
- Do not use the appliance in a room with major temperature changes, as this may cause condensation inside the appliance.
- To prevent interference, place the appliance at least 2 meters away from electrical appliances that use airborne radio waves such as TVs, radios, and radio-controlled clocks.
- The appliance is only intended for household use under normal operating conditions.
- Do not use the appliance in wet surroundings or in surroundings with high ambient temperatures, such as the bathroom, toilet, or kitchen.
- The appliance does not remove carbon monoxide (CO) or radon (Rn). It cannot be used as a safety device in case of accidents with combustion processes and hazardous chemicals.
- If you need to move the appliance, disconnect the appliance from the power supply first.
- Do not move the appliance by pulling its power cord.

## 2 Your air purifier

Congratulations on your purchase, and welcome to Philips!

To fully benefit from the support that Philips offers, register your product at [www.philips.com/welcome](http://www.philips.com/welcome).

### Product overview (fig. ①)

- A Control panel
- B Air quality light
- C Air quality sensors
- D NanoProtect filter HEPA Series 3 (FY3433)
- E NanoProtect filter Active Carbon\* (FY3432)
- F Pre-filter
- G Front panel

### Controls overview (fig. ②)

- H On/Off button
- I Light on/off button
- J Auto mode button
- K Display screen
- L Fan speed button
- M Timer button
- N Reset/Child lock button

## 3 Getting started

### Installing filters



#### Note

- Make sure the air purifier is unplugged from the electrical outlet before installing the filters.
- Make sure the side of the filter with the tag is pointing towards you.

- 1 Pull the bottom part of the front panel to remove it from the appliance (fig. ③).
- 2 Press the two clips down and pull the pre-filter towards you (fig. ④).
- 3 Remove all filters (fig. ⑤).
- 4 Remove all packaging materials of the air purification filters (fig. ⑥).
- 5 Put the unpacked air purification filters back into the appliance (fig. ⑦).
- 6 Put the pre-filter back into the appliance (fig. ⑧).



#### Note

- Make sure that the side with the two clips is pointing towards you, and that all hooks of the pre-filter are properly attached to the purifier.




- 7 To reattach the front panel, mount the panel onto the top of the appliance first (1). Then, gently push the panel against the body of the appliance (2) (fig. ⑨).
- 8 Wash your hands thoroughly after installing filters.

## Wi-Fi connection

### Setting up the Wi-Fi connection for the first time

- 1 Download and install the "Air Matters" app from the **App Store** or **Google Play**.



- 2 Put the plug of the air purifier in the power socket and touch  to turn on the air purifier.  
↳ The Wi-Fi indicator  blinks orange for the first time.
- 3 Make sure that your smartphone or tablet is successfully connected to your Wi-Fi network.
- 4 Launch the "Air Matters" app and click on "Connect an Air Purifier or Monitor" on the top of the screen. Follow the onscreen instructions to connect the air purifier to your network.
- 5 After the successful pairing and connection, the Wi-Fi indicator  will light up white. If pairing is not successful, consult the troubleshooting section, or the help section in the "Air Matters" App for extensive and up-to-date troubleshooting tips.


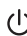


#### Note

- This instruction is only valid when the air purifier is being set up for the first time. If the network has changed or the setup needs to be performed again, consult section "Reset the Wi-Fi connection" on page 6.
- If you want to connect more than one air purifier to your smartphone or tablet, you have to do this one by one. Complete the set up of one air purifier before you turn on the other air purifier.
- Make sure that the distance between your smartphone or tablet and the air purifier is less than 10 m without any obstructions.
- This App supports the latest versions of Android and iOS. Please check [www.philips.com/purifier-compatibility](http://www.philips.com/purifier-compatibility) for the latest update of supported operating systems and devices.

### Reset the Wi-Fi connection

#### Note

- This applies when the default network to which your purifier is connected has changed.
- Reset the Wi-Fi connection when your default network has changed.

- 1 Put the plug of the air purifier in the power socket and touch  to turn on the air purifier.
- 2 Touch  and  simultaneously for 3 seconds until you hear a beep.  
↳ The air purifier goes to pairing mode.  
↳ The Wi-Fi indicator  blinks orange.
- 3 Follow the steps 4-5 in "Setting up the Wi-Fi connection for the first time" section.






## 4 Using the appliance

### Understanding the air quality light

IAI level	Air quality light color	Air quality level
1-3	Blue	Good
4-6	Blue-Purple	Fair
7-9	Purple-Red	Poor
10-12	Red	Very poor


The air quality light automatically goes on when the appliance is switched on, and lights up all colors in sequence. In a short time the air quality sensors select the color that corresponds to the ambient air quality.

### Switching on and off




- 1 Put the plug of the appliance in the power socket.
- 2 Touch  to switch on the appliance (fig. 10).
  - ↳ The appliance operates under the auto mode by default.
  - ↳ After measuring the air quality for a short time, the air quality sensor automatically selects the color of the air quality light.
  - ↳ After measuring the particle matters in the air, the air purifier shows the IAI level and operates in the auto mode with  displayed on the screen (fig. 11).
- 3 Touch and hold  for 3 seconds to switch off the appliance.



#### Note



- After the appliance is switched off by the on/off button , if the plug is still in the power socket, the appliance will operate under the previous settings when it is switched on again.

### Changing the Auto mode setting

You can choose the General mode (  ), the Allergen mode (  ) and the Bacteria & Virus mode (  ).



#### Allergen mode

The specially designed Allergen mode can effectively remove common allergens such as pollen and pet dander.

- Touch the Auto mode button  to select the Allergen mode (fig. 12).
  - ↳ Auto(A) and  display on the screen.

#### General mode



A smart auto-setting that automatically adjusts the air purifier's settings to the ideal level.

- Touch the Auto mode button  to select the General mode (fig. 13).
  - ↳ Auto(A) and  display on the screen.

---

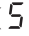

## Bacteria/Virus mode

The specially designed Bacteria & Virus mode can effectively remove bacteria & viruses such as staphylococcus albus and H1N1.

- Touch the Auto mode button  to select the Bacteria & Virus mode (fig. 14).
  - ↳ Auto(A) and  display on the screen.

---



## Changing the fan speed

There are several fan speeds available. You can choose the sleep mode () , turbo mode() and speed 1, 2, or 3.

---


### Sleep (SL)

In sleep mode, the appliance operates quietly under speed 1. One minute into the sleep mode, the power and light on/off indicators are dimmed, and all the other lights are off.

- Touch the fan speed button  to select the sleep mode () (fig. 15).

---


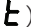
### Manual

- Touch the fan speed button  repeatedly to select the fan speed you need (fig. 16).

---

### Turbo (t)


In turbo mode, the appliance operates under the highest speed.


- Touch the fan speed button  to select the turbo mode () (fig. 17).

---

## Setting the timer





With the timer, you can let the appliance operate for a set number of hours. When the set time has elapsed, the appliance will automatically switch off.

- Touch the timer button  repeatedly to choose the number of hours you want the appliance to operate (fig. 18).
  - ↳ The timer is available from 1 to 12 hours.

To deactivate the timer, touch the timer button  repeatedly until 0h displays on the screen.



---

## Setting the child lock

- 1 Touch and hold the child lock button  for 3 seconds to activate child lock (fig. 19).
  - ↳  displays on the screen.
  - ↳ When the child lock is on, all the other buttons are not responsive.
- 2 Touch and hold the child lock button  for 3 seconds again to deactivate child lock (fig. 20).
  - ↳  disappears from the screen.

## Using the light on/off function

With the light on/off button, you can switch on or off the air quality light, the display screen and the function indicators if needed.



- 1 Touch the light on/off button  once, the air quality light, the display screen and the function indicators will go off.
- 2 Touch the light on/off button  for the third time, all lights will be on again.

## Switching the display mode

The air purifier has two display modes: Indoor Allergen Index (IAI) display and PM2.5 display mode. When in IAI mode, the display shows a number between 1-12 to indicate the level of airborne allergens. In PM2.5 mode the display shows the particulate matter 2.5 concentration in the air in  $\mu\text{g}/\text{m}^3$ .

### Note

- The air purifier operates in IAI display mode by default.

- 1 Touch the light on/off button  for 3 seconds again to switch to PM2.5 display mode (fig. 21).  
 ↳ The PM2.5 level displays on the screen.
- 2 Touch the light on/off button  for 3 seconds to switch back to IAI display mode (fig. 22).  
 ↳ The actual IAI level displays on the screen.

## 5 Cleaning

### Note

- Always unplug the appliance before cleaning.
- Never immerse the appliance in water or any other liquid.
- Never use abrasive, aggressive, or flammable cleaning agents such as bleach or alcohol to clean any part of the appliance.
- Only the pre-filter is washable. The air purification filter is not washable nor vacuum cleanable.

## Cleaning schedule

Frequency	Cleaning method
When necessary	Wipe the surface of the appliance with a soft dry cloth
When <b>F0</b> displays on the screen	Clean the pre-filter
Every two months	Clean the air quality sensors

## Cleaning the body of the appliance

Regularly clean the inside and outside of the appliance to prevent dust from collecting.

- 1 Wipe away dust with a soft dry cloth from the body of the appliance.
- 2 Clean the air outlet with a soft dry cloth.

## Cleaning the air quality sensor

Clean the air quality sensor every 2 months for optimal functioning of the purifier. Clean them more frequently if you use the purifier in a dusty environment.

### Note

- When the humidity level in the room is very high, it is possible that condensation develops on the air quality sensor. As a result, the air quality light may indicate that the air quality is bad even though it is good. In this case you have to clean the air quality sensor or use one of the manual speed settings.

- 1 Clean the air quality sensor inlet and outlet with a soft brush (fig. 23).
- 2 Open the air quality sensor cover (fig. 24).
- 3 Clean the air quality sensor, the dust inlet and the dust outlet with a lightly moistened cotton swab (fig. 25).
- 4 Dry them with a dry cotton swab.
- 5 Reattach the air quality sensor cover (fig. 26).

## Cleaning the pre-filter

Clean the pre-filter when **F0** is displayed on the screen (fig. 27).

- 1 Pull the bottom part of the front panel to remove it from the appliance (fig. 3).
- 2 Press the two clips down and pull the pre-filter towards you (fig. 4).
- 3 Wash the pre-filter under a running tap. If the pre-filter is very dirty, use a soft brush to brush away the dust (fig. 28).
- 4 Air dry the pre-filter.


### Note

- Make sure that the pre-filter is completely dry. If it is still wet, bacteria may multiply in it and shorten the lifetime of the pre-filter.

- 5 Put the pre-filter back into the appliance (fig. 8).

### Note

- Make sure that the side with the two clips is pointing towards you, and that all hooks of the pre-filter are properly attached to the purifier.

- 6 To reattach the front panel, mount the panel onto the top of the appliance first (1). Then, gently push the panel against the body of the appliance (2) (fig. 9).
- 7 Touch and hold the reset button  for 3 seconds to reset the pre-filter cleaning time (fig. 29).

## 6 Replacing the filter

### Understanding the healthy air protect lock

This air purifier is equipped with a filter replacement indicator to make sure that the air purification filter is in optimal condition when the air purifier is operating. When the filters need to be replaced, the filter code displays on the screen (see **Filter alert chart**).

If the filters are not replaced in 14 days, the air purifier will stop operating and automatically lock to protect the air quality in the room. Replace the filters as soon as possible according to the filter code.

### Replacing the filters

#### Note

- The air purification filters are not washable nor vacuum cleanable.
- Always turn off the air purifier and unplug from the electrical outlet before replacing the filters.
- Do not clean the filters with a vacuum cleaner.
- If the pre-filter is damaged, worn or broken, do not use. Visit [www.philips.com/support](http://www.philips.com/support) or contact the Consumer Care Center in your country.


Filter alert chart

Filter alert light status	Follow this
A3 displays on the screen	Replace NanoProtect filter HEPA Series 3 (FY3433)
C7 displays on the screen	Replace the NanoProtect filter Active Carbon (FY3432)
A3 and C7 display on the screen alternately	Replace both filters

- 1 Take out the used air filters according to the filter code displayed on the screen. Discard used filters (fig.30).

#### Note

- Do not touch the pleated filter surface, or smell the filter as it has collected pollutants from the air.

- 2 Remove all packaging material of the new filters (fig.6).
- 3 Place the new filters into the appliance (fig.7).
- 4 Put the plug of the appliance in the wall outlet.
- 5 Touch and hold the reset button  for 3 seconds to reset the filter lifetime counter (fig.31).





#### Note

- Wash your hands after changing the filters.





## Filter lifetime counter reset

After replacing a filter, you need to reset the filter lifetime counter manually.

You can also replace filters even if there is no filter replacement code displayed on the screen.


- 1 Touch  and  simultaneously for 3 seconds to enter the filter force reset mode (fig. 32).  
↳ Code (A3) of the NanoProtect filter HEPA Series 3 displays on the screen.
- 2 Touch and hold  for 3 seconds to force reset the filter lifetime of the NanoProtect filter HEPA Series 3 (fig. 33).
- 3 Code (C7) of the Nanoprotect filter AC displays on the screen after the lifetime of the NanoProtect filter HEPA Series 3 filter has been reset (fig. 34).
- 4 Touch and hold  for 3 seconds to force reset the filter lifetime of the NanoProtect filter Active Carbon and exit the filter force reset mode (fig. 35).



## Filter type change

- 1 Touch  and  simultaneously for 3 seconds to enter the filter type change mode (fig. 32).  
↳ Code (A3) of the NanoProtect filter HEPA Series 3 displays on the screen.
- 2 Touch  to select the filter code of the new filter you will use (fig. 36).
- 3 Touch and hold  for 3 seconds to confirm the filter code of the new filter (fig. 37).



### Note



- After you have selected the filter code of the new filter using the  button, if you do not touch any other buttons in 10 seconds, the appliance will automatically confirm the filter code of the new filter.

- 4 Code (C7) of the Nanoprotect filter Active Carbon displays on the screen after the first filter type has been changed (fig. 34).
- 5 Touch  to select the new filter code of the second filter (fig. 38).
- 6 Touch and hold  for 3 seconds to confirm the filter code of the second filter and exit the filter type change mode (fig. 39).

## 7 Troubleshooting

This chapter summarizes the most common problems you could encounter with the appliance. If you are unable to solve the problem with the information below, contact the Consumer Care Center in your country.

Problem	Possible solution
<b>The appliance does not work even though it is plugged in..</b>	<ul style="list-style-type: none"> <li>• Check if the front cover is properly installed.</li> <li>• The filter replacement code has been displaying on the screen but you have not replaced the corresponding filter yet. The appliance will be locked if you keep using the expired filter. In this case, replace the filter and reset the filter lifetime counter.</li> </ul>
<b>The appliance does not work even though it is switched on.</b>	<ul style="list-style-type: none"> <li>• Check if the packing materials for the filters are removed.</li> <li>• The appliance is working but the buttons are not responsive. Check if the child lock is on.</li> <li>• The filter replacement code has been on continuously but you have not replaced the corresponding filter, and the appliance is now locked. In this case, replace the filter and reset the filter lifetime counter.</li> </ul>
<b>The airflow that comes out of the air outlet is significantly weaker than before.</b>	<ul style="list-style-type: none"> <li>• The pre-filter is dirty. Clean the pre-filter (see chapter "Cleaning").</li> </ul>
<b>The air quality does not improve, even though the appliance has been operating for a long time.</b>	<ul style="list-style-type: none"> <li>• One of the filters has not been placed in the appliance. Make sure that all filters are properly installed in the following order, starting with the innermost filter: 1) NanoProtect filter HEPA Series 3 (FY3433); 2) NanoProtect filter Active Carbon (FY3432); 3) pre-filter.</li> <li>• The air quality sensor is wet. The humidity level in your room is high and causes condensation. Make sure that the air quality sensor is clean and dry (see chapter "Cleaning").</li> </ul>
<b>The color of the air quality light always stays the same.</b>	<ul style="list-style-type: none"> <li>• The air quality sensor is dirty. Clean the air quality sensor (see chapter "Cleaning").</li> </ul>

Problem	Possible solution
<b>The appliance produces a strange smell.</b>	<ul style="list-style-type: none"> <li>• The filter may produce smell after being used for a while because of the absorption of indoor gases. It's recommended that you reactivate the filter by putting it in direct sunlight for repeated use. If odor still exists, replace the filter.</li> <li>• If the air purifier produces a burnt odor, switch OFF and unplug from the electrical outlet. Contact Consumer Care Center in your country.</li> </ul>
<b>The appliance is extra loud.</b>	<ul style="list-style-type: none"> <li>• If the appliance is too loud, you can change the fan speed to a lower fan speed level. When using the appliance in a bedroom at night, choose the sleep mode.</li> </ul>
<b>The appliance still indicates that I need to replace a filter, but I already did.</b>	<ul style="list-style-type: none"> <li>• Perhaps you did not reset the filter lifetime counter. Plug in the appliance, touch  to switch on the appliance, and touch and hold the reset button  for 3 seconds.</li> </ul>
<b>Error codes "E1", or "E2" displays on the screen.</b>	<ul style="list-style-type: none"> <li>• The appliance has malfunctions. Contact the Consumer Care Center in your country.</li> </ul>



Problem	Possible solution
Which App I should download?	<ul style="list-style-type: none"> <li>• Please download and install the 'Air Matters' app from the App Store or Google Play.</li> </ul>
The Wi-Fi setup is not successful.	<ul style="list-style-type: none"> <li>• If the router your purifier is connected to is dual – band and currently it is not connecting to a 2.4GHz network, please switch to another band of the same router (2.4GHz) and try to pair your purifier again. 5Ghz networks are not supported.</li> <li>• Web authentication networks are not supported.</li> <li>• Check if the purifier is within range of the Wi-Fi router. You can try to locate the air purifier closer to the Wi-Fi router.</li> <li>• Check if the network name is correct. The network name is case-sensitive.</li> <li>• Check if the Wi-Fi password is correct. The password is case-sensitive.</li> <li>• Retry the setup with the instructions in section 'Set up the Wi-Fi connection when the network has changed'.</li> <li>• The Wi-Fi connectivity can be interrupted by electromagnetic or other interferences. Keep the appliance away from other electronic devices that may cause interferences.</li> <li>• Check if the mobile device is in airplane mode. Make sure to have the airplane mode deactivated when connecting to the Wi-Fi network.</li> <li>• Consult the help section in the App for extensive and up-to-date troubleshooting tips.</li> </ul>

## 8 Guarantee and service

If you need information or if you have a problem, please visit the Philips website at [www.philips.com](http://www.philips.com) or contact the Philips Consumer Care Center in your country (you find its phone number in the worldwide guarantee leaflet). If there is no Consumer Care Centre in your country, go to your local Philips dealer.

---

### Order parts or accessories

If you have to replace a part or want to purchase an additional part, go to your Philips dealer or visit [www.philips.com/support](http://www.philips.com/support).

If you have problems obtaining the parts, please contact the Philips Consumer Care Center in your country (you can find its phone number in the worldwide guarantee leaflet).

## 9 Notices

---

### Electromagnetic fields (EMF)

This Philips appliance complies with all applicable standards and regulations regarding exposure to electromagnetic fields.

---

### Compliance with EMF

Koninklijke Philips N.V. manufactures and sells many products targeted at consumers, which, like any electronic apparatus, in general have the ability to emit and receive electromagnetic signals.

One of Philips' leading Business Principles is to take all necessary health and safety measures for our products, to comply with all applicable legal requirements and to stay well within the EMF standards applicable at the time of producing the products.

Philips is committed to develop, produce and market products that cause no adverse health effects. Philips confirms that if its products are handled properly for their intended use, they are safe to use according to scientific evidence available today.

Philips plays an active role in the development of international EMF and safety standards, enabling Philips to anticipate further developments in standardization for early integration in its products.

---

## Recycling

Do not throw away the product with the normal household waste at the end of its life, but hand it in at an official collection point for recycling. By doing this, you help to preserve the environment.

Follow your country's rules for the separate collection of electrical and electronic products. Correct disposal helps prevent negative consequences for the environment and human health.

---

## Software

App Store is a service mark of Apple Inc.  
Google Play is a trademark of Google Inc.

This Philips appliance and Air Matters app applied multiple open source softwares, copies of open source software license text used in this product can be derived from website: [www.philips.com/purifier-compatibility](http://www.philips.com/purifier-compatibility).



# 目錄

<b>1 重要事項</b>	<b>20</b>	<b>6 更換濾網</b>	<b>27</b>
安全	20	瞭解健康空氣保護鎖	27
<b>2 您的空氣清淨機</b>	<b>22</b>	更換濾網	27
產品概要 (圖 ①)	22	重設濾網使用壽命計數器	28
控制項目概要 (圖 ②)	22	濾網類型變更	28
<b>3 快速入門</b>	<b>22</b>	<b>7 疑難排解</b>	<b>29</b>
安裝濾網	22	<b>8 保固與服務</b>	<b>31</b>
Wi-Fi 連線	23	訂購零件或配件	31
<b>4 使用產品</b>	<b>24</b>	<b>9 聲明</b>	<b>31</b>
瞭解空氣品質指示燈	24	電磁場 (EMF)	31
開啟和關閉電源	24	回收	31
變更自動模式設定	24	軟體	31
變更風速	24		
設定計時器	25		
設定兒童鎖	25		
使用開/關燈按鈕	25		
切換顯示模式	25		
<b>5 清潔</b>	<b>26</b>		
清潔排程	26		
清潔產品機體	26		
清潔空氣品質感測器	26		
清潔前層濾網	26		

使用環保紙張。感謝您為守護樹木貢獻一份心力。

# 1 重要事項

## 安全

在使用本產品前，請先仔細閱讀本使用手冊，並保留說明以供日後參考。

## 危險

- 請勿讓水或其他液體，或是易燃清潔劑進入產品內，以避免觸電和 / 或火災。
- 請勿用水、其他液體，或是 (易燃) 清潔劑清潔產品，以避免觸電和 / 或火災。
- 請勿在產品周圍噴灑殺蟲劑或芳香劑等任何易燃物質。

## 警示

- 在您連接電源之前，請檢查本地的電源電壓是否與產品所示的電壓相符。
- 如果電源線損壞，您必須將其交由飛利浦、飛利浦授權之服務中心，或是具備相同資格的技師進行更換，以免發生危險。
- 當插頭、電源線或產品本身受損時，請勿使用本產品。
- 本產品可供 8 歲以上孩童、身體官能或心智能力退化者，或是經驗與使用知識缺乏者使用，但需要有人在旁監督或適當指示如何安全使

用本產品，以及可能遭受的危險。請勿讓孩童把玩本產品。若無人在旁監督，不得讓孩童清潔與維護本產品。

- 請勿在出風口上方或進風口前面放置物品，擋住進出風口。
- 確定沒有異物透過出風口掉入產品。
- 2.4 GHz 802.11b/g/n 標準 WiFi 介面，最大輸出功率為 31.62 mW EIRP。

## 注意

- 本產品不可用來作為維持良好通風的設備、替代吸塵器清潔，或烹調時用來當作抽油煙機使用。
- 如果供應產品電力的電源插座接頭不良，產品插頭會發熱。請確定將產品插入接頭良好的插座。
- 請將本產品放置在乾燥平穩的水平面上使用。
- 產品的背面及側面須至少保留 20 公分的間隔距離，頂部則至少保留 30 公分的間隔距離。
- 產品頂部請勿放置任何物品。
- 請勿坐在或站在產品上。站或坐在本產品上可能引發潛在傷害。

- 請勿將產品放置在冷氣機正下方，以免冷氣機滴水，造成產品發生水滴凝結的現象。
- 請在開啟產品電源前，先確認所有濾網皆已正確安裝。
- 請僅使用產品專用的飛利浦原廠濾網。請勿使用其他濾網。
- 燃燒濾網可能會對人體造成不可逆危險和/或危及其他生命。請勿將濾網當成燃料，或以類似目的使用濾網。
- 切勿使用硬物敲打產品 (特別是進風口及出風口)。
- 請務必使用產品頂部的握把提起或搬動產品。
- 請勿將手指或物體插入出風口或進風口，以避免身體受傷或損壞產品。
- 當您使用室內噴霧式驅蟲劑或在充滿油漬、燒香、香煙的火星或化學煙霧的地方時，請勿使用本產品。
- 請勿在氣體用品、加熱裝置或壁爐附近使用本產品。
- 使用完畢後，及進行清潔或其他維修之前，請務必先拔除產品的電源插頭。
- 請勿在溫差變化極大的室內使用本產品，因為室溫差距太大會造成本產品內部凝結水珠。
- 請將本產品遠離使用無線電電波的電器至少 2 公尺以避免干擾，例如電視、無線電廣播、無線電信號控制的時鐘。
- 本產品為家用產品，僅限於在正常操作環境下使用。
- 請勿在極為潮濕或周遭溫度很高的環境下使用本產品，例如浴室、廁所或廚房。
- 本產品無法清除一氧化碳 (CO) 或氫氣 (Rn)。發生燃燒意外及危險化學物品意外時，本產品無法當作安全裝置使用。
- 若您需要搬動產品，請先切斷產品電源供應。
- 請勿以拉動電源線的方式移動本產品。

## 2 您的空氣清淨機

感謝您購買本產品。歡迎來到飛利浦的世界！

請至 [www.philips.com/welcome](http://www.philips.com/welcome) 註冊您的產品，以獲得飛利浦提供的完整支援。

### 產品概要 (圖 ①)

- A 控制面板
- B 空氣品質指示燈
- C 空氣品質感測器
- D 奈米級勁護 HEPA S3型濾網 (FY3433)
- E 奈米級勁護 活性炭濾網 (FY3432)
- F 前層濾網
- G 前面板

### 控制項目概要 (圖 ②)

- H 開/關按鈕
- I 開/關燈按鈕
- J 自動模式按鈕
- K 顯示畫面
- L 風速按鈕
- M 計時器按鈕
- N 重設/兒童鎖按鈕

## 3 快速入門

### 安裝濾網

#### 備註

- 請確定已從電源插座拔除空氣清淨機的電源插頭後，再安裝濾網。
- 請確認濾網有拉片的一側朝向自己。

- 1 拉出正面護板的底部，將它從產品中取出 (圖 ③)。
- 2 按壓兩個固定夾，再朝自己的方向拉出前層濾網 (圖 ④)。
- 3 取出所有濾網 (圖 ⑤)。
- 4 拆下空氣淨化濾網的所有包裝材料 (圖 ⑥)。
- 5 將拆下包裝的空氣淨化濾網放回產品中 (圖 ⑦)。
- 6 將前層濾網裝回產品 (圖 ⑧)。

#### 備註

- 請確認具兩個固定夾的一側朝向自己，且前層濾網的所有扣鉤皆已正確裝入清淨機。

- 7 若要重新裝入正面護板，請先將護板掛上產品上端 (1)。接著，輕輕將護板輕推入產品機體 (2) (圖 ⑨)。
- 8 裝好濾網後，請徹底清潔雙手。



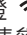


## Wi-Fi 連線

### 第一次設定 Wi-Fi 連線

- 1 從 App Store 或 Google Play 下載並安裝「Air Matters」應用程式。



- 2 將空氣清淨機的插頭插入電源插座，然後按下  以開啟空氣清淨機。  
↳ 第一次使用時，Wi-Fi 指示燈  會閃爍橘光。
- 3 請確定智慧型手機或平板裝置已成功連線至您的 Wi-Fi 網路。
- 4 啟動「在意空氣」應用程式，並按一下畫面頂端的「Connect an Air Purifier or Monitor」（連接淨化器或檢測器）。依照螢幕指示將空氣清淨機連接至您的網路。
- 5 成功配對和連線後，Wi-Fi 指示燈  會亮起白光。如果配對不成功，請參閱疑難排解部分，或「Air Matters」應用程式的說明部分，以深入掌握最新的疑難排解秘訣。

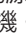

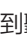

#### 備註

- 此說明僅在第一次設定空氣清淨機時才適用。如果網路已變更或需要再次執行設定，請參閱第23頁「重設 Wi-Fi 連線」部分。
- 如要將一台以上的空氣清淨機連線到智慧型手機或平板裝置，必須逐一設定。請先完成一台空氣清淨機的設定後，再開啟其他空氣清淨機。
- 務請確定您的智慧型手機或平板裝置與空氣清淨機之間的距離少於 10 公尺，且沒有任何阻礙物。
- 本應用程式支援最新版 Android 和 iOS。請至 [www.philips.com/purifier-compatibility](http://www.philips.com/purifier-compatibility) 查看最新更新的支援作業系統和裝置。

### 重設 Wi-Fi 連線

#### 備註

- 這適用於空氣清淨機連線的預設網路已變更時。
- 在預設網路已變更時重設 Wi-Fi 連線。

- 1 將空氣清淨機的插頭插入電源插座，然後按下  以開啟空氣清淨機。
- 2 同時按下  和  3 秒鐘，直到聽到嗶聲。  
↳ 此時空氣清淨機會進入配對模式。  
↳ Wi-Fi 指示燈  會閃爍橘光。
- 3 請依照「第一次設定 Wi-Fi 連線」部分的步驟 4-5 進行。



## 4 使用產品

### 瞭解空氣品質指示燈

IAI 等級	空氣品質指示燈顏色	空氣品質等級
1-3	藍色	很棒
4-6	藍紫色	普通
7-9	紫紅色	不良
10-12	紅色	非常不良

產品電源開啟後，空氣品質指示燈會自動亮起，並依序閃爍所有燈色。過一會後，空氣品質感測器會選擇符合周遭空氣品質的相應顏色。


### 開啟和關閉電源

- 1 將產品插頭插入電源插座。
- 2 按下  以開啟產品電源 (圖 10)。
  - ↳ 本產品預設以自動模式運作。
  - ↳ 短暫檢測空氣品質後，空氣品質感測器會自動選擇空氣品質指示燈顏色。
  - ↳ 在測量空氣中的懸浮微粒後，空氣清淨機會顯示 IAI 等級，並以自動模式運作， 會顯示在螢幕上 (圖 11)。




- 3 按住  3 秒鐘即可關閉產品電源。



#### 備註

- 按下開/關 (On/Off) 按鈕  將產品關機後，若插頭仍插在電源插座上，產品再次啟動時，將以前次設定運作。

### 變更自動模式設定

您可以選擇一般模式 ()、過敏原模式 () 及細菌與病毒模式 ()。

#### 過敏原模式

經特殊設計的過敏原模式可有效去除常見的過敏原，例如花粉和寵物皮屑。

- 按下自動模式按鈕  以選擇過敏原模式 (圖 12)。
  - ↳ 自動 (A) 和  會顯示在螢幕上。

#### 一般模式

此智慧型自動設定可將空氣清淨機的設定自動調整至最適合的程度。

- 按下自動模式按鈕  以選擇一般模式 (圖 13)。
  - ↳ 自動 (A) 和  會顯示在螢幕上。

#### 細菌/病毒模式

經特殊設計的細菌與病毒的模式可有效去除細菌和病毒，例如白色葡萄球菌與 H1N1。

- 按下自動模式按鈕  以選擇細菌與病毒模式 (圖 14)。
  - ↳ 自動 (A) 和  會顯示在螢幕上。

### 變更風速

有多種風扇速度可選擇。您可以選擇睡眠模式 (SL)、加速增強模式 (L) 和速度 1、2 或 3。

#### 睡眠 (SL)

在睡眠模式中，產品會以速度 1 安靜地運作。進入睡眠模式一分鐘後，電源和開/關燈指示燈會變暗，所有其他燈號都會關閉。

- 按下風速按鈕  以選擇睡眠模式 (SL) (圖 15)。

## 手動

- 重複按下風速按鈕  以選擇所需風速 (圖 16)。


## 加速增強 (t)


在加速增強模式下，產品會以最高速度運作。

- 按下風速按鈕  以選擇加速增強模式 (t) (圖 17)。





## 設定計時器

您可以使用計時器，讓產品在設定的小時數內運作。設定時間結束後，產品會自動關閉電源。

- 重複按下計時器按鈕  以選擇想讓產品運作的小時數 (圖 18)。  
↳ 計時器可選範圍為 1 至 12 小時。



若要停用計時器，重複按下計時器按鈕  直到螢幕顯示 0h 為止。

## 設定兒童鎖

- 按住兒童鎖按鈕  3 秒鐘，可啟動兒童鎖 (圖 19)。  
↳  會顯示在螢幕上。  
↳ 兒童鎖啟用時，所有其他按鈕都不會有反應。
- 再次按住兒童鎖按鈕  3 秒鐘，即可停用兒童鎖 (圖 20)。  
↳  將從螢幕上消失。

## 使用開/關燈按鈕

透過開/關燈按鈕，就能視需要開啟或關閉空氣品質指示燈、顯示螢幕及功能指示燈。



- 按一下開/關燈按鈕 ，空氣品質指示燈、顯示螢幕和功能指示燈將會關閉。
- 三度按下開/關燈按鈕 ，所有燈號即會再次亮起。

## 切換顯示模式

本空氣清淨機有兩個顯示模式：室內過敏原指數 (IAI) 和 PM2.5 顯示模式。在 IAI 模式下，螢幕會顯示 1-12 之間的數字，以表示空氣中的過敏原程度。在 PM2.5 模式下，螢幕會顯示空氣中細懸浮微粒的濃度，單位為  $\mu\text{g}/\text{m}^3$ 。

### 備註

- 空氣清淨機預設為以 IAI 顯示模式運作。

- 再次按下開/關燈按鈕  3 秒鐘，以切換至 PM2.5 顯示模式 (圖 21)。  
↳ 螢幕會顯示 PM2.5 等級。
- 按下開/關燈按鈕  3 秒鐘，即可切換回到 IAI 顯示模式 (圖 22)。  
↳ 螢幕會顯示實際的 IAI 等級。

## 5 清潔

### 備註

- 在進行清潔之前，請務必先拔除產品的電源插頭。
- 切勿讓產品浸入水或其他液體中。
- 切勿使用漂白劑或酒精等具磨蝕性、刺激性或易燃性的洗劑清潔產品的任何部分。
- 只有前層濾網可水洗。空氣清淨濾網不得清洗，亦不得使用吸塵器清潔。

## 清潔排程

頻率	清潔方法
必要時	用柔軟的乾布擦拭產品表面
當螢幕顯示 F0 時	清潔前層濾網
每兩個月	清潔空氣品質感測器

## 清潔產品機體

定期清潔產品的內部與外殼，可避免累積灰塵。

- 1 請使用柔軟的乾布擦除產品機體的灰塵。
- 2 請用柔軟的乾布清潔空氣出風口。

## 清潔空氣品質感測器

每 2 個月清理一次空氣品質感測器，可確保清淨機發揮最佳效果。如果在佈滿灰塵的環境中使用清淨機，就要更常進行清潔。

### 備註

- 當室內濕度等級很高的時候，空氣品質感測器上可能會凝結水滴。如此一來，即使空氣品質良好，空氣品質指示燈可能會顯示空氣品質不良。在此情況下，您必須清潔空氣品質感測器，或使用手動風速設定。

- 1 請使用軟刷來清潔空氣品質感測器的進風口及出風口 (圖 23)。
- 2 打開空氣品質感測器的護蓋 (圖 24)。
- 3 請使用略濕的棉棒，清潔空氣品質感測器、覆有灰塵的進風口和出風口 (圖 25)。
- 4 使用乾棉棒擦乾。
- 5 重新裝上空空氣品質感測器的護蓋 (圖 26)。

## 清潔前層濾網

當螢幕顯示 F0 時，請清潔前層濾網 (圖 27)。

- 1 拉出正面護板的底部，將它從產品中取出 (圖 3)。
- 2 按壓兩個固定夾，再朝自己的方向拉出前層濾網 (圖 4)。
- 3 以流動的自來水清洗前層濾網。若前層濾網很髒，請使用軟刷來清除灰塵 (圖 28)。
- 4 讓前層濾網自然風乾。

### 備註

- 請確認前層濾網已全乾。如果前層濾網未乾，細菌可能會在其中滋生，造成其使用壽命縮短。

## 5 將前層濾網裝回產品 (圖 ⑧)。

### 備註

- 請確認具兩個固定夾的一側朝向自己，且前層濾網的所有扣鉤皆已正確裝入清淨機。

## 6 若要重新裝入正面護板，請先將護板掛上產品上端 (1)。接著，輕輕將護板輕推入產品機體 (2) (圖 ⑨)。

## 7 按住重設按鈕 3 秒鐘，以重設前層濾網清潔時間 (圖 ⑳)。

# 6 更換濾網

## 瞭解健康空氣保護鎖

本空氣清淨機配備了濾網更換指示燈，用以確認空氣清淨機運作時空氣淨化濾網處於最佳狀態。濾網需要更換時，螢幕會顯示濾網代碼 (請參閱濾網警示表)。

若 14 天未更換濾網，空氣清淨機會停止運作並自動鎖定，以保護房內的空氣品質。請根據濾網代碼盡速更換濾網。

## 更換濾網

### 備註

- 空氣清淨濾網不得清洗，亦不得使用吸塵器清潔。
- 更換濾網前，請務必關閉空氣清淨機電源，再從電源插座拔掉插頭。
- 請勿使用吸塵器清潔濾網。
- 如果前層濾網損壞、磨損或破裂，則請勿使用。請造訪 [www.philips.com/support](http://www.philips.com/support) 或聯絡您所在國家/地區的客戶服務中心。

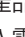
### 濾網警示表

濾網警示燈狀態	遵循此程序
螢幕上顯示 A3	更換 奈米級勁護 HEPA S3 型濾網 (FY3433)
螢幕上顯示 C7	更換 奈米級勁護 活性碳濾網 (FY3432)
A3 和 C7 會交替在螢幕上顯示	更換兩個濾網

- 1 根據螢幕顯示的濾網代碼取出用過的空氣濾網。請丟棄用過的濾網 (圖 30)。

#### 備註

- 請勿碰觸有皺摺的濾網表面或嗅聞濾網，因為它收集了空氣中的污染物。





- 2 拆下新濾網的所有包裝材料 (圖 6)。
- 3 將新濾網裝至產品 (圖 7)。
- 4 將產品插頭插入電源插座。
- 5 按住重設按鈕  3 秒鐘，可重設濾網使用壽命計數器 (圖 31)。

#### 備註





- 更換濾網後請洗手。

## 重設濾網使用壽命計數器


更換濾網後，您需要手動重設濾網使用壽命計數器。即使螢幕未顯示濾網更換代碼，您仍可以更換濾網。


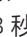
- 1 同時按下  和  3 秒鐘，以進入濾網強制重設模式 (圖 32)。  
↳ 螢幕會顯示奈米級勁護 HEPA S3 型濾網的代碼 (A3)。
- 2 按住  3 秒鐘，可強制重設 奈米級勁護 HEPA S3型濾網的使用壽命 (圖 33)。
- 3 在重設奈米級勁護 HEPA S3型濾網的使用壽命後，螢幕會顯示 奈米級勁護 活性碳濾網的代碼 (C7) (圖 34)。
- 4 按住  3 秒鐘，可強制重設 奈米級勁護 活性碳濾網的使用壽命，並退出濾網強制重設模式 (圖 35)。

## 濾網類型變更

- 1 同時按下  和  3 秒鐘，以進入濾網類型變更模式 (圖 32)。  
↳ 螢幕會顯示奈米級勁護 HEPA S3 型濾網的代碼 (A3)。
- 2 按下  以選擇新濾網的濾網代碼 (圖 36)。
- 3 按住  3 秒鐘，以確認新濾網的濾網代碼 (圖 37)。

#### 備註

- 使用  按鈕選擇新濾網的濾網代碼後，若在 10 秒鐘內未按下任何其他按鈕，產品將自動確認新濾網的濾網代碼。

- 4 變更完第一個濾網類型後，螢幕會顯示 奈米級勁護 活性碳濾網的代碼(C7) (圖 34)。
- 5 按下  以選擇第二個濾網的新濾網代碼 (圖 38)。
- 6 按住  3 秒鐘，以確認第二個濾網的濾網代碼並退出濾網類型變更模式 (圖 39)。

## 7 疑難排解

本單元概述您使用本產品時可能遇到的最常見問題。如果您無法利用以下資訊解決您遇到的問題，請聯絡您所在國家/地區的客戶服務中心。

問題	可能的解決方法
產品即使已插電也無法運作。	<ul style="list-style-type: none"> <li>請檢查前蓋是否已正確安裝。</li> <li>螢幕已顯示濾網更換代碼，但您尚未更換相應的濾網。如果您繼續使用過期的濾網，產品將會鎖定。在此情況下，請更換濾網並重設濾網壽命計數器。</li> </ul>
即使產品電源已開啟，仍無法運作。	<ul style="list-style-type: none"> <li>請檢查濾網的包裝材料是否已拆下。</li> <li>產品運作中，但按鈕沒反應。請檢查兒童鎖是否已開啟。</li> <li>濾網更換代碼持續出現，但卻未更換相應濾網，如今產品已鎖定。在此情況下，請更換濾網並重設濾網壽命計數器。</li> </ul>
出風口流出的風速比之前慢很多。	<ul style="list-style-type: none"> <li>前層濾網髒污。清潔前層濾網 (參閱「清潔」單元)。</li> </ul>
即使產品已經長時間運作，空氣品質仍未獲得改善。	<ul style="list-style-type: none"> <li>其中一個濾網尚未裝入產品中。請確認所有濾網都已按照下列順序正確安裝，濾網從內至外分別為：               <ol style="list-style-type: none"> <li>奈米級勁護 HEPA S3型濾網 (FY3433)；</li> <li>奈米級勁護 活性炭濾網 (FY3432)；</li> <li>前層濾網。</li> </ol> </li> <li>空氣品質感測器潮溼。室內的濕度等級很高，造成水珠凝結。請確認空氣品質感測器乾淨且乾燥 (參閱「清潔」單元)。</li> </ul>
空氣品質指示燈的顏色一直維持不變。	<ul style="list-style-type: none"> <li>空氣品質感測器髒污。清潔空氣品質感測器 (參閱「清潔」單元)。</li> </ul>
使用產品時發出異味。	<ul style="list-style-type: none"> <li>使用一段時間之後，濾網可能會因為吸收室內氣體而產生異味。建議將濾網拿到陽光下曝曬以供重複使用。如果異味仍然存在，請更換濾網。</li> <li>若空氣清淨機產生燒焦味，請關機並拔掉插頭。請聯絡您所在國家/地區的客戶服務中心。</li> </ul>
產品噪音太大。	<ul style="list-style-type: none"> <li>如果產品噪音很大聲，可將風速變更為較低的速度等級。夜間於臥室使用產品時，請選擇睡眠模式。</li> </ul>
產品不斷指示需更換濾網，但濾網已經更換了。	<ul style="list-style-type: none"> <li>您或許未重設濾網壽命計數器。將產品插上電源，按下  啟動產品，接著按住重設按鈕  3 秒鐘。</li> </ul>

問題	可能的解決方法
螢幕顯示「E1」或「E2」錯誤代碼。	<ul style="list-style-type: none"> <li>產品故障。請聯絡您所在國家/地區的客戶服務中心。</li> </ul>
我該下載哪個應用程式？	<ul style="list-style-type: none"> <li>請從 App Store 或 Google Play 下載並安裝「Air Matters」應用程式。</li> </ul>
Wi-Fi 設定不成功。	<ul style="list-style-type: none"> <li>如果清淨機連接的路由器為雙波段，且目前並未連接至 2.4GHz 網路，請切換到相同路由器的另一個波段 (2.4GHz) 並嘗試再次配對您的清淨機。不支援 5Ghz 網路。</li> <li>不支援 Web 認證網路。</li> <li>檢查清淨機是否位於 Wi-Fi 路由器的範圍內。您可以嘗試將空氣清淨機移近 Wi-Fi 路由器。</li> <li>檢查網路名稱是否正確。網路名稱需區分大小寫。</li> <li>檢查 Wi-Fi 密碼是否正確。密碼需區分大小寫。</li> <li>請依照「在網路已變更時設定 Wi-Fi 連線」一節中的指示，重試設定。</li> <li>Wi-Fi 連線可能受到電磁干擾或其他干擾而中斷。請讓本產品盡量遠離可能造成干擾的其他電子裝置。</li> <li>檢查行動裝置是否處於飛航模式。連接至 Wi-Fi 網路時，請務必先停用飛航模式。</li> <li>請參閱應用程式的說明章節，以深入掌握最新的疑難排解秘訣。</li> </ul>



## 8 保固與服務

若您需要相關資訊，或是有任何問題，請造訪飛利浦網站：[www.philips.com](http://www.philips.com)，或聯絡您所在國家/地區的飛利浦客戶服務中心（您可在全球保證書上找到電話號碼）。若當地沒有客戶服務中心，請洽詢當地的飛利浦經銷商。

### 訂購零件或配件

如果您必須更換零件或想購買其他零件，請聯絡您的飛利浦經銷商，或造訪 [www.philips.com/support](http://www.philips.com/support)。

如果您有取得零件方面的問題，請聯絡您所在國家/地區的飛利浦客戶服務中心（您可在全球保證書上找到電話號碼）。

## 9 聲明

### 電磁場 (EMF)

本飛利浦產品符合所有電磁場暴露的相關適用標準和法規。

#### 符合 EMF 標準

Koninklijke Philips N.V. 製造銷售多項消費性產品，這些產品就如同其他電器，通常能收發電磁訊號。

飛利浦的一大企業原則，就是針對自身的產品進行必要的健康與安全檢測，以符合所有適用的法律規定，以及在產品生產期間符合適用的 EMF 標準。

飛利浦致力於開發、生產及銷售不危害健康的產品。飛利浦保證，只要依照正確用途並妥善使用，根據現有的科學研究資料，使用本公司產品並無安全顧慮。

飛利浦積極參與國際 EMF 與安全標準的開發，因此得以掌握標準化的發展，及早將標準化與自身的產品整合。

### 回收

本產品使用壽命結束時，請勿與一般家庭廢棄物一併丟棄。請將該產品送至政府指定的回收點或進行回收。此舉能為環保盡一份心力。

請遵循您所在國家/地區對電氣與電子產品分類收集的規定。正確處理廢棄產品有助於避免對環境和人類健康帶來負面影響。

### 軟體

App Store 是 Apple Inc 的服務標章。

Google Play 是 Google Inc 的商標。

本飛利浦產品與 Air Matters 應用程式含有多個開放原始碼軟體，本產品使用的開放原始碼軟體授權文本副本可於此網站取得：[www.philips.com/purifier-compatibility](http://www.philips.com/purifier-compatibility)。

## 低功率電波輻射性電機管理辦法

### 第十二條

經型式認證合格之低功率射頻電機，非經許可，公司、商號或使用者均不得擅自變更頻率、加大功率或變更原設計之特性以及功能。

### 第十四條

低功率射頻電機之使用不得影響飛航安全及干擾合法通信；經發現有干擾現象時，應立即停用，並改善至無干擾方得繼續使用。

前項合法通信，指依電信法規定作業之無線電通信。低功率射頻電機須忍受合法通信或工業、科學及醫療用電波輻射性電機設備之干擾。

設備名稱：飛利浦空氣清淨機， 型號（型式）：AC3259 Equipment name                      Type designation (Type)						
單元 Unit	限用物質及其化學符號 Restricted substances and its chemical symbols					
	鉛 Lead (Pb)	汞 Mercury (Hg)	鎘 Cadmium (Cd)	六價鉻 Hexavalent chromium (Cr <sup>+6</sup> )	多溴聯苯 Polybrominated biphenyls (PBB)	多溴二苯醚 Polybrominated diphenyl ethers (PBDE)
主電路板組件	—	○	○	○	○	○
電源電路板	—	○	○	○	○	○
傳感器電源轉接板	—	○	○	○	○	○
Wi-Fi電路板	—	○	○	○	○	○
馬達組件	—	○	○	○	○	○
<p>備考1：“超出0.1 wt %”及“超出0.01 wt %”係指限用物質之百分比含量超出百分比含量基準值。 Note 1: “Exceeding 0.1 wt %” and “exceeding 0.01 wt %” indicate that the percentage content of the restricted substance exceeds the reference percentage value of presence condition.</p> <p>備考2：“○”係指該項限用物質之百分比含量未超出百分比含量基準值。 Note 2: “○” indicates that the percentage content of the restricted substance does not exceed the percentage of reference value of presence.</p> <p>備考3：“—”係指該項限用物質為排除項目。 Note 3: The “—” indicates that the restricted substance corresponds to the exemption.</p>						